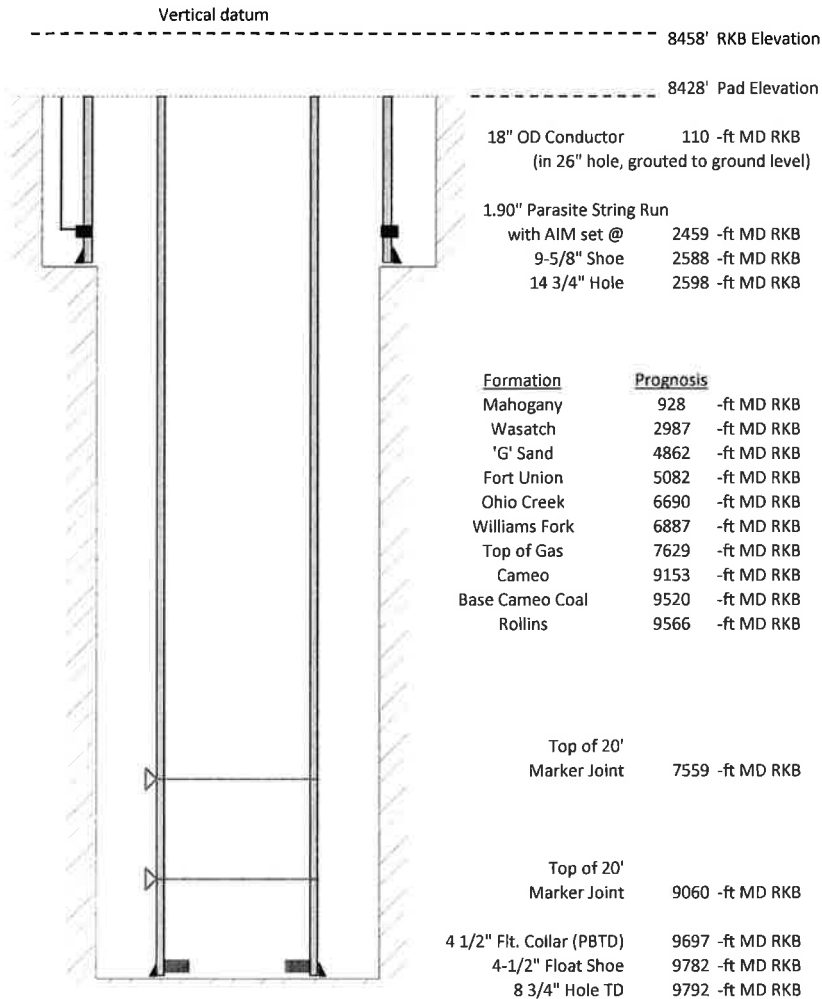


Laramie Energy, LLC  
 CC 0697-03-14W  
 Slot B-9  
 H&P 522 (30-ft KB)

API # : 05-045-23804-00  
 Lot 11/S3/T6S/R97W/6th PM  
 Garfield County, CO  
 Date of diagram : 6/23/2018



**Cementing details**

8-5/8" 24# Surface Csg	Lead	Tail
Density (ppg)	12.3	12.8
Volume (sx)	1015	292
Yield (cf/sx)	2.38	2.11
Top (ft RKB)	0	2030
Bottom (ft RKB)	2030	2588
Returns (full or partial)	No	No

4-1/2" 11.6# Prod Csg	Lead	Tail
Density (ppg)	12.5	13.0
Volume (sx)	1169	502
Yield (cf/sx)	1.94	2.06
Est Top (ft RKB)	2030	7429
Est Bottom (ft RKB)	7429	9782
Returns (full or partial)	Full	Partial

Displacement
8.3 ppg
bbls

Other Remarks : Surface- no returns. Top out with 213 sx 45 bbls. 15.6 ppg production- 10 bbls spacer to surface with 2000 cfm on para