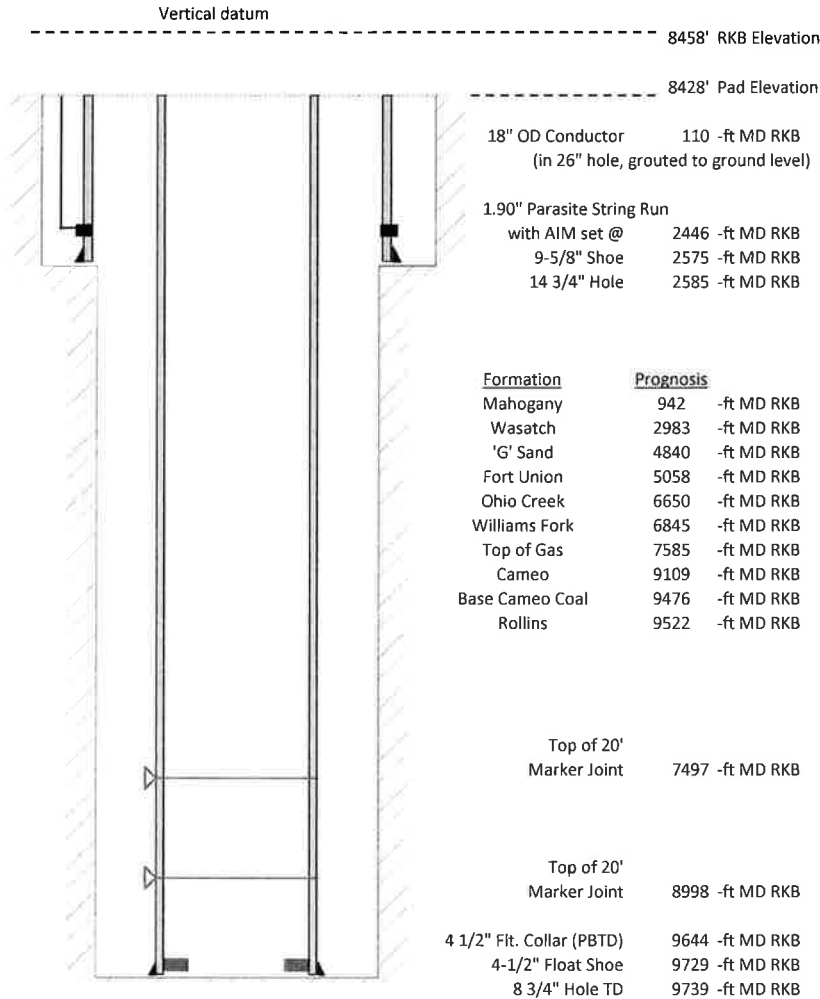


Laramie Energy, LLC
CC 0697-03-13W
Slot B-8
H&P 522 (30-ft KB)

API # : 05-045-23794-00
 Lot 11/53/T6S/R97W/6th PM
 Garfield County, CO
 Date of diagram : 6/17/2018



Cementing details

8-5/8" 24# Surface Csg	Lead	Tail
Density (ppg)	12.3	12.8
Volume (sx)	1015	292
Yield (cf/sx)	2.38	2.11
Top (ft RKB)	0	2030
Bottom (ft RKB)	2030	2575
Returns (full or partial)	none	none

4-1/2" 11.6# Prod Csg	Lead	Tail
Density (ppg)	12.5	13.0
Volume (sx)	1160	502
Yield (cf/sx)	1.94	2.06
Est Top (ft RKB)	2030	7385
Est Bottom (ft RKB)	7385	9729
Returns (full or partial)	Full	Full

Displacement
8.3 ppg
149.5 bbls

Other Remarks : Surface- no returns. Top out with 101 sx 21 bbls. 15.6 ppg production- 10 bbls spacer to surface with 2000 cfm on para