

CC 0697-03-13W  
Garfield County, CO  
Q180636 & RM-180548  
Design #4

Company Name: Laramie Energy, LLC  
CC 0697-03-13W  
Garfield County, CO  
Rig: 30" RKB  
Created By: Will Jircik  
Date: 6/16/2018

PROJECT DETAILS:	Garfield County, CO
Geodetic System:	US State Plane 1983
Datum:	North American Datum 1983
Ellipsoid:	GRS 1980
Zone:	Colorado Central Zone
System Datum:	Mean Sea Level

T

M

Azimuths to True North

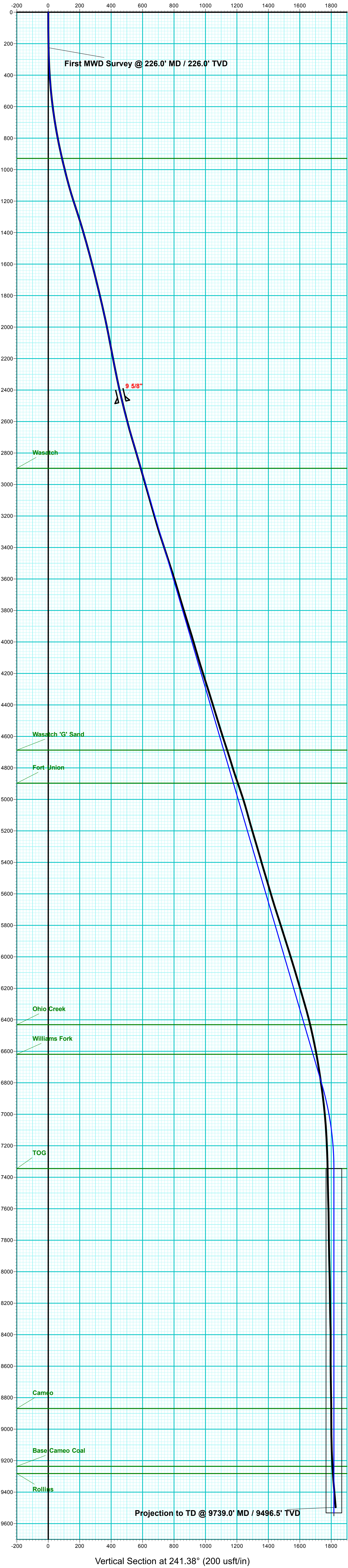
Magnetic North: 9.63°

Strength: 51411.0snT

Dip Angle: 65.59°

Date: 5/16/2018

Model: USER DEFINED



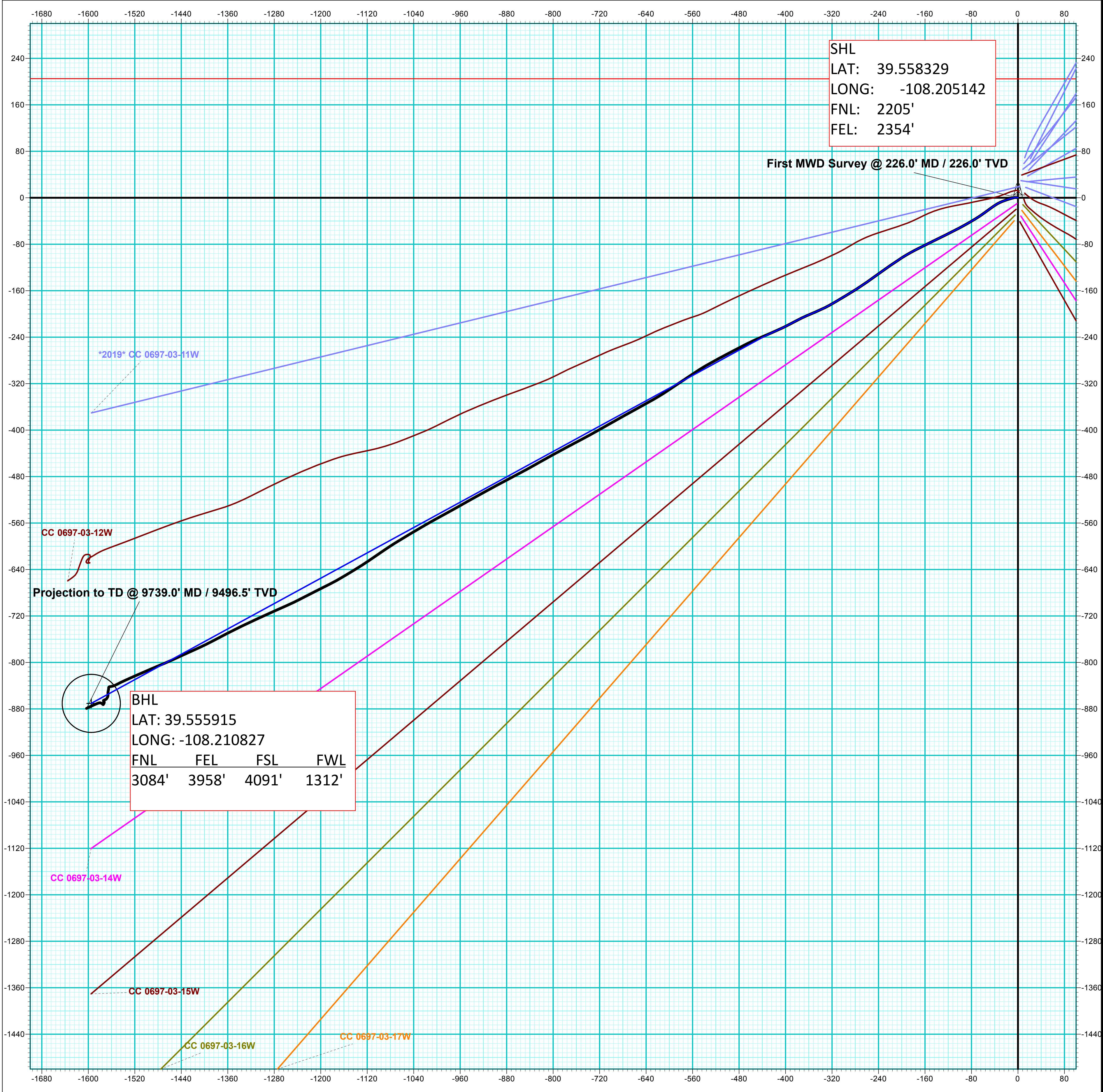
DESIGN TARGET DETAILS							
Name	PBHL - CC 0697-03-13W	TVD	9532.0	+N/-S	-870.4	+E/-W	-1594.9
Northing	1638782.03	Easting	2235776.41	Latitude	39.555939	Longitude	-108.210798
Shape	Circle (Radius: 50.0)						

DESIGN #4 ANNOTATIONS							
MD	Inc	Azi	TVD	+N/-S	+E/-W	VSect Departure	Annotation
2494.0	13.40	245.20	2440.1	-223.9	-405.0	462.8	0.0
2585.0	13.40	245.20	2528.6	-232.7	-424.2	483.8	21.1
2689.9	16.39	241.39	2630.0	-244.9	-448.2	510.8	48.1
7042.8	16.39	241.39	6806.0	-833.2	-1526.7	1739.3	1276.6
7589.3	0.00	0.00	7345.0	-870.4	-1594.9	1816.9	1354.2
9776.3	0.00	0.00	9532.0	-870.4	-1594.9	1816.9	1354.2

WELL DETAILS: CC 0697-03-13W					
+N/-S	+E/-W	Northing	Easting	Latitude	Longitude
0.0	0.0	1639604.59	2237396.50	39.558329	-108.205142

FORMATION TOP DETAILS		
TVDPath	MDPath	Formation
929.0	935.7	Mahogany
2897.0	2968.2	Wasatch
4687.0	4834.1	Wasatch 'G' Sand
4897.0	5053.0	Fort Union
6431.0	6652.0	Ohio Creek
6619.0	6847.9	Williams Fork
7345.0	7589.3	TOG
8869.0	9113.3	Cameo
9236.0	9480.3	Base Cameo Coal
9282.0	9526.3	Rollins

ANNOTATIONS							
MD	Inc	Azi	TVD	+N/-S	+E/-W	VSecDeparture	Annotation
226.0	1.30	282.60	226.0	0.6	-2.5	1.9	2.6
9739.0	5.05	244.21	9496.5	-879.1	-1603.0	1828.2	1851.1



Vertical Section at 241.38° (200 usft/in)