



# CALLIPER LOG

FILE NO:

COMPANY

LARAMIE ENERGY II LLC

WELL

CC 0697-03-13W

FIELD

GRAND VALLEY

API NO:  
05045237940000

COUNTY

GARFIELD

STATE COLORADO

Ver. 4.10

LOCATION:

LAT: 39.55830200 LONG:-108.20514600

OTHER SERVICES  
NONE

SEC 3 TWP 6S RGE 97W

PERMANENT DATUM GL ELEVATION 8438 FT  
LOG MEASURED FROM KB 30 FT ABOVE P.D.  
DRILL. MEAS. FROM KB

ELEVATIONS:  
KB 8468 FT  
DF 8467 FT  
GL 8438 FT

DATE 12-Jun-2018

RUN 1 TRIP 1

SERVICE ORDER US138173

DEPTH DRILLER 2585 FT

DEPTH LOGGER 25 FT

BOTTOM LOGGED INTERVAL 2542 FT

TOP LOGGED INTERVAL 2542 FT

CASING DRILLER 16 IN @ 110 FT

CASING LOGGER 109 FT

BIT SIZE 14.75 IN

TYPE OF FLUID IN HOLE WBM

DENSITY 9 LBG 46 CP

PH 8.8 16 C3

SOURCE OF SAMPLE SUCTION

RM AT MEAS. TEMP. 3.471 OHMM @ 75 DEGF

RMF AT MEAS. TEMP. 2.603 OHMM @ 75 DEGF

RMC AT MEAS. TEMP. 4.338 OHMM @ 75 DEGF

SOURCE OF RMF RMC CALCULATED CALCULATED

RM AT BHT 2.473 OHMM @ 108 DEGF

TIME SINCE CIRCULATION 7 HRS

MAX. RECORDED TEMP. 127.6 DEGF

EQUIP. NO. LOCATION ML-4268 GRAND JCT.

RECORDED BY S.YASSAM, BAUKA

WITNESSED BY J. GRUBICH

IN MAKING INTERPRETATIONS OF LOGS OUR EMPLOYEES WILL GIVE THE CUSTOMER THE BENEFIT OF THEIR BEST JUDGEMENT. BUT SINCE ALL INTERPRETATIONS ARE OPINIONS BASED ON INFERENCES FROM ELECTRICAL OR OTHER MEASUREMENTS, WE CANNOT, AND WE DO NOT GUARANTEE THE ACCURACY OR CORRECTNESS OF ANY INTERPRETATION. WE SHALL NOT BE LIABLE OR RESPONSIBLE FOR ANY LOSS, COST, DAMAGES, OR EXPENSES WHATSOEVER INCURRED OR SUSTAINED BY THE CUSTOMER RESULTING FROM ANY INTERPRETATION MADE BY ANY OF OUR EMPLOYEES.

## REMARKS

RUN 1 TRIP 1: 1 OPERATION IN WELL  
HDIL/ZDL/CN/GR RUN IN COMBINATION

BVOL & CVOL CALCULATED IN CUBIC FEET  
CVOL CALCULATED FOR PROPOSED 9.625" CASING

ZDL & CN RUN ON SANDSTONE MATRIX  
RHO MATRIX: 2.68 G/CC

HDIL RUN WITH 1.5" STANDOFFS  
ABC TO CALCULATED: STAND OFF

WELLBORE RUGOSITY WILL AFFECT THE ACCURACY OF MEASUREMENTS

CREW: C.GOLOBY ,B.SMITH,B.BRANSON  
RIG: H&P 522

## EQUIPMENT DATA

RUN	TRIP	TOOL	SERIES NO.	SERIAL NO.	POSITION
1	1	TTRM	3981XA	10407113	FREE
1	1	CR	3514XC	12367092	DECENTRALIZED
1	1	GR	1329XA	177858	DECENTRALIZED
1	1	CN	2446XA	10342164	FREE
1	1	ZDL	2234XA	115357	PAD DEVICE
1	1	DKJT	3939XA	10217757	FREE
1	1	HDIL	1515EA/1515MA	10174847/10307148	FREE

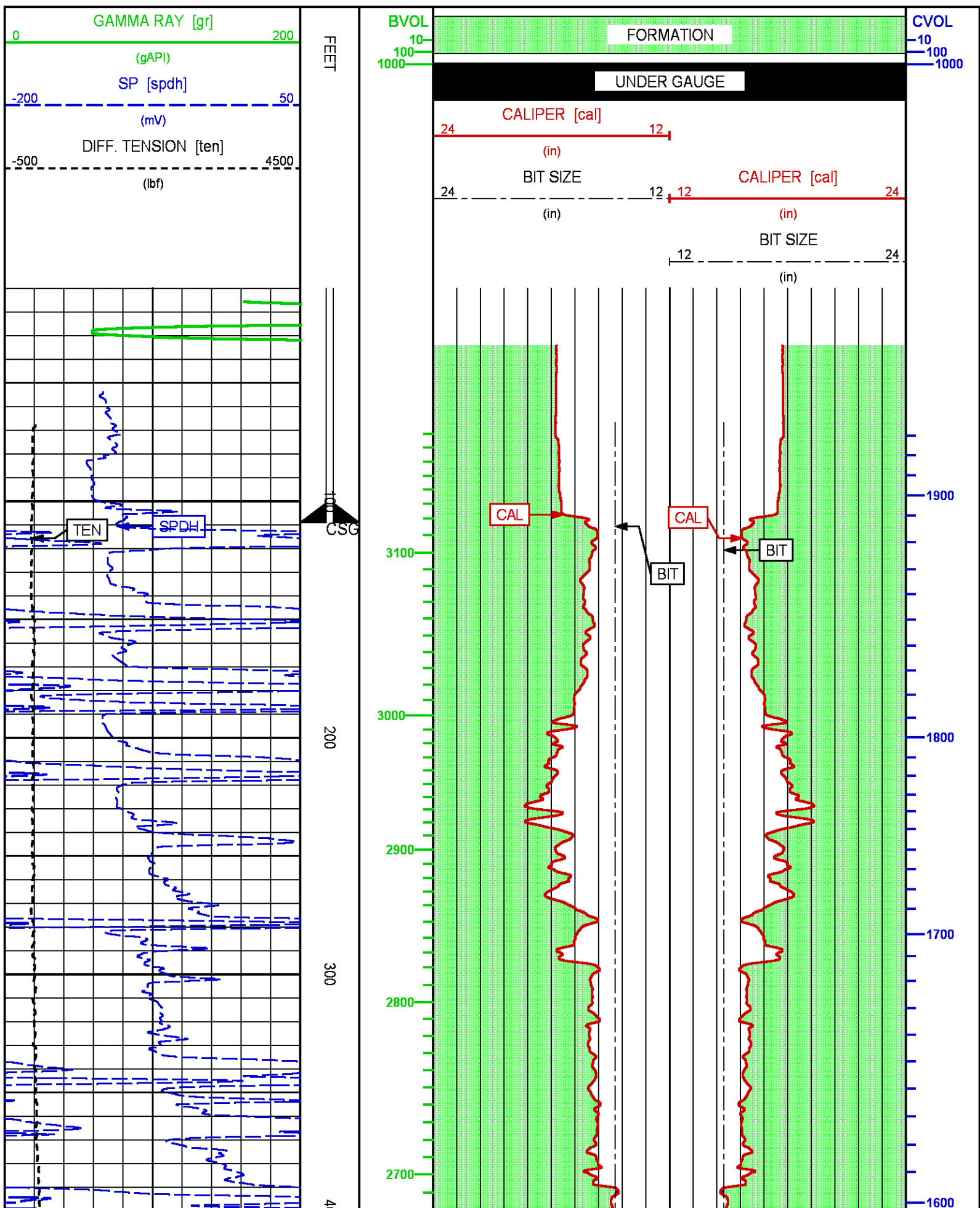
BOREHOLE PROFILE LOG FOR 4.5" CASING

ECLIPS 7.0i ECLIPS General Release Rel 7.0i Thu Jun 08 20:36:10 CDT 2017  
Patches: 4

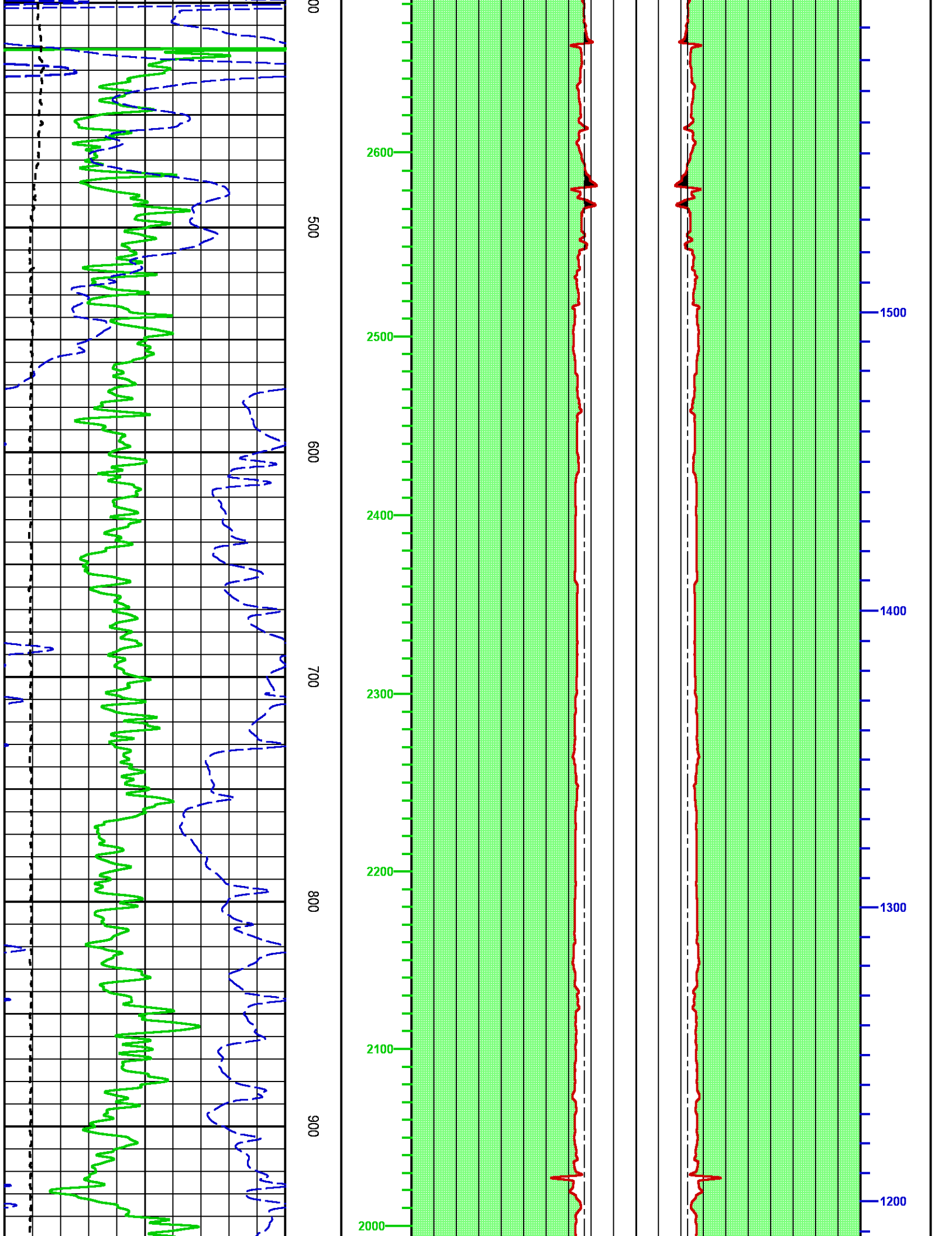
Plotted: Tue Jun 12 12:26:00 2018

PARAMETER AND FILTER SUMMARY REPORT							
FILE: /dat1a/LARAMIE_CC_0697_03_13W/MSLAM_XC02.prm							
LOGGING MODE: DEPTH		DIRECTION: UP					
TOP DEPTH: 66.750 ft		BOTTOM DEPTH: 2549.250 ft					
SYMMETRIC FILTER							
MEASUREMENT TYPE	PARAMETER	VALUE	UNITS	INTERVAL (ft)			
Y AXIS CALIPER	FILTER ()	medium (1)		TOP	BOTTOM		
TENSION	FILTER ()	medium (1)		"	"		
GR	FILTER ()	medium (1)		"	"		
CALIPER	FILTER ()	medium (1)		"	"		
	FILTER (.h)	medium (1)		"	"		
	FILTER (.i)	medium (1)		"	"		
SP-SPDH	FILTER ()	medium (1)		"	"		
BOREHOLE & CEMENT							
MEASUREMENT TYPE	PARAMETER	VALUE	UNITS	INTERVAL (ft)			
CASING - BOREHOLE & CEMENT VOLUME	CASING O.D.	9.625	in	TOP	BOTTOM		
BIT SIZE	BIT SIZE	14.750	in	"	"		
CURVE DESCRIPTION REPORT							
CURVE NAME	CREATION DATE	CURVE DESCRIPTION					
F1:BIT	N/A	BIT SIZE					
F1:BVOL	N/A	BOREHOLE VOLUME					
F1:CAL	N/A	CALIPER					
F1:CVOL	N/A	CEMENT VOLUME					
F1:GR	N/A	GAMMA RAY					
F1:SPDH	N/A	SPONTANEOUS POTENTIAL PROCESSED IN COMMON REMOTE					
F1:TEN	N/A	DIFFERENTIAL TENSION					
CURVE MEASURE POINT OFFSET							
CURVE	OFFSET (ft)	CURVE	OFFSET (ft)	CURVE	OFFSET (ft)	CURVE	OFFSET (ft)
BIT	0.00	GR	-52.25	TEN	0.00		
CAL	-35.00	SPDH	-14.00				
<div><div>Presentation : SysA:/dat1a/LARAMIE_CC_0697_03_13W/bhp1cal_MAIN-2.fvpdf [2"/100' Scale]</div><div>Plot Interval : 15.75 - 2549.25 Feet</div><div>Data File 1 : F1 : SysA:/dat1a/LARAMIE_CC_0697_03_13W/MAIN.xtf</div><div>Created On : N/A</div></div>							

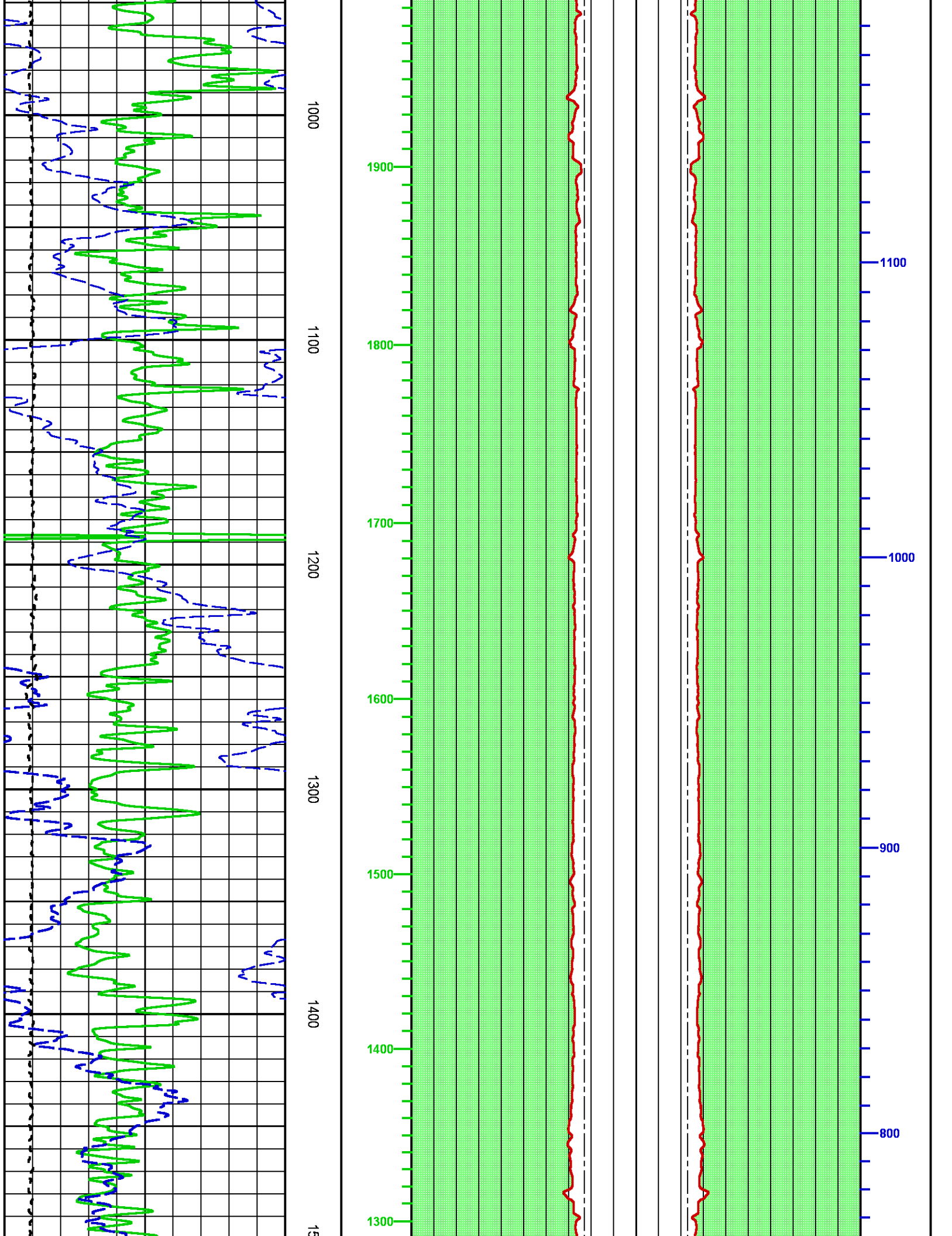
Company : LARAMIE ENERGY II LLC  
Well : CC 0697-03-13W  
Field : GRAND VALLEY  
File Interval : 1.25 - 2549.25 Feet  
OCT : MSLAM\_XC



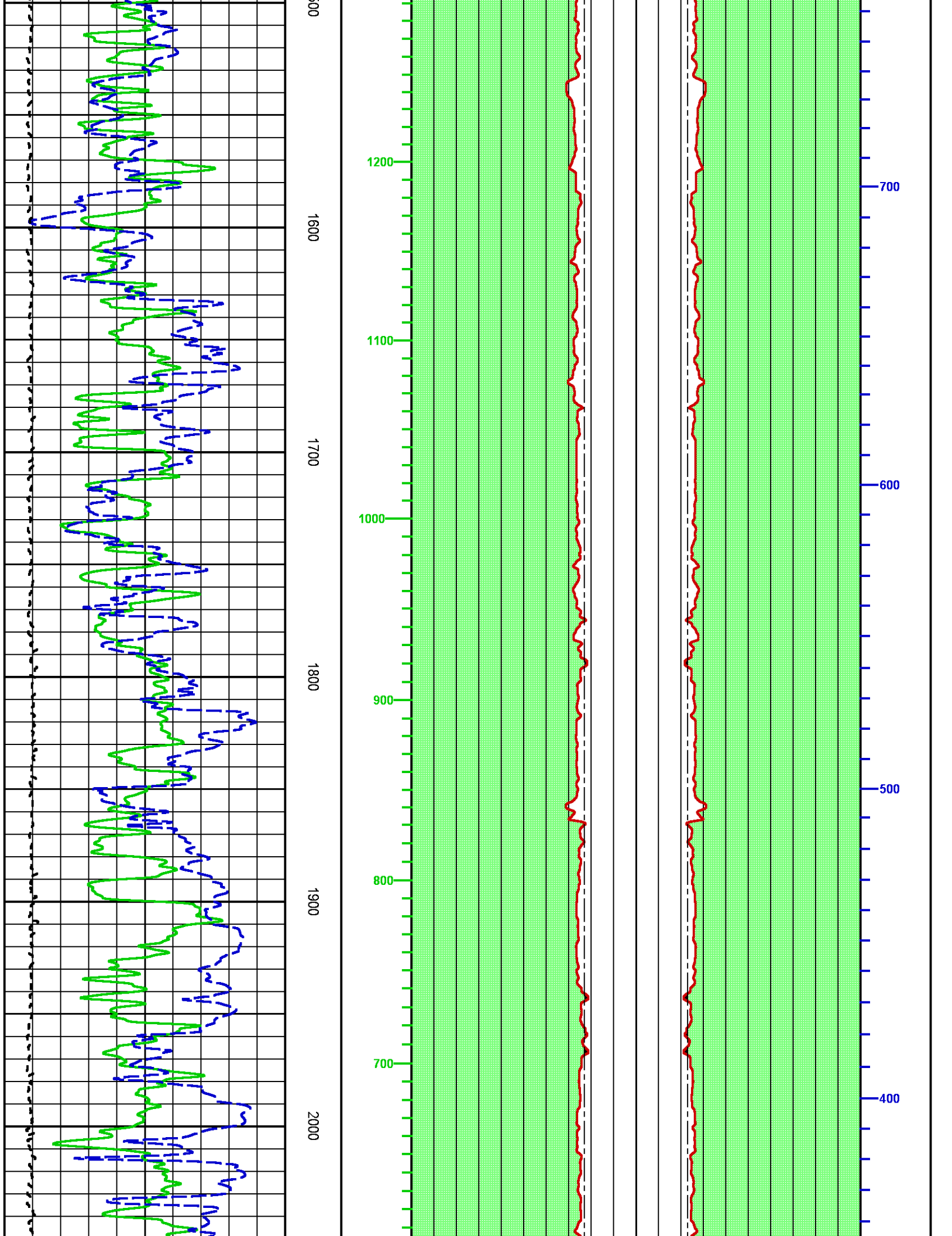




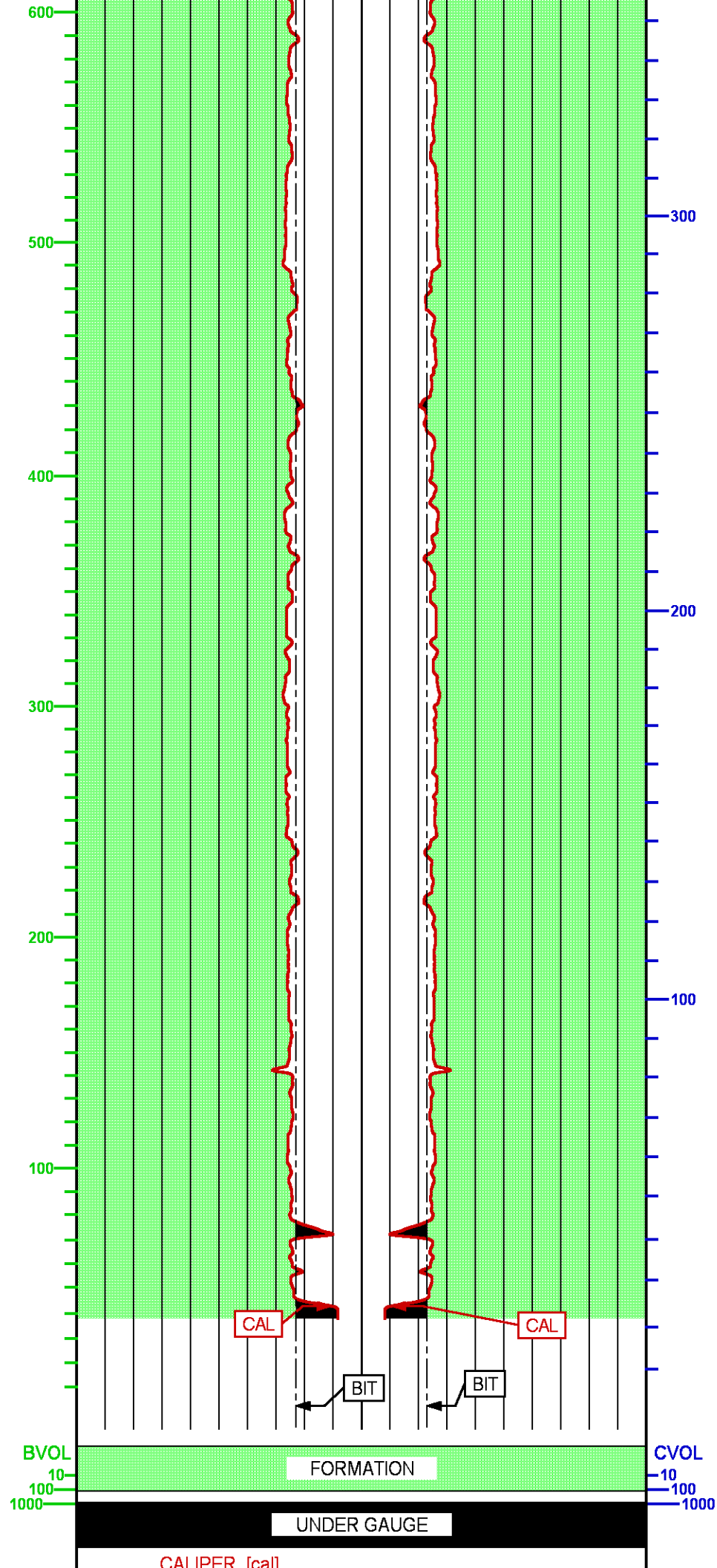
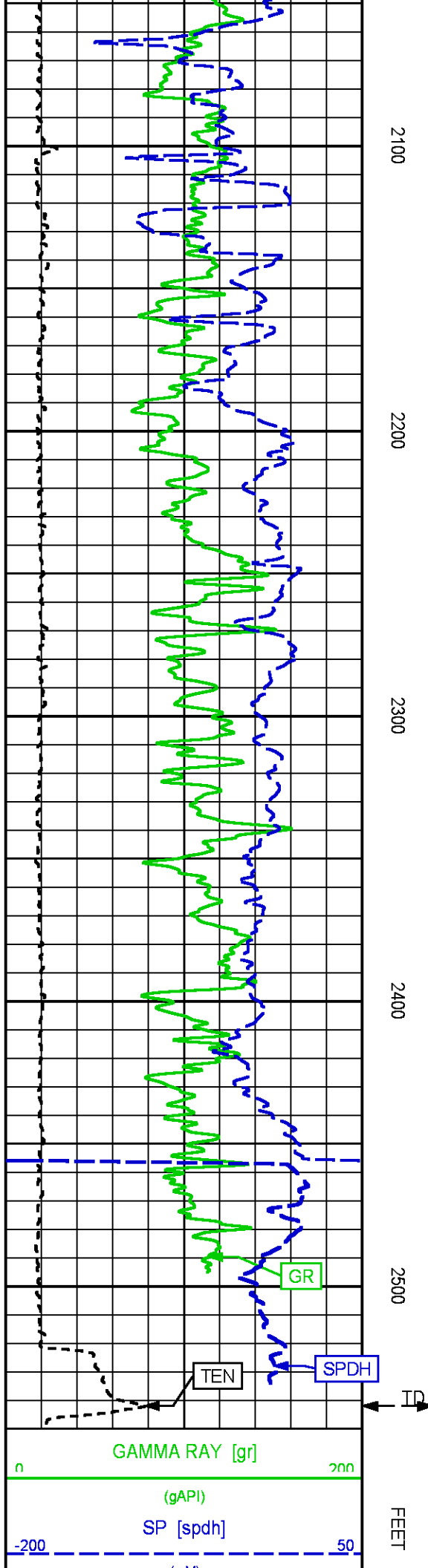












<div>(mv)</div> <div>DIFF. TENSION [ten]</div> <div>-500</div> <div>4500</div> <div>(lbf)</div>			<div>24</div> <div>CALIPER [cal]</div> <div>12</div> <div>(in)</div> <div>24</div> <div>12</div> <div>CALIPER [cal]</div> <div>24</div> <div>(in)</div> <div>12</div> <div>BIT SIZE</div> <div>(in)</div> <div>12</div> <div>BIT SIZE</div> <div>(in)</div> <div>24</div>
---	--	--	---

<div><div>BAKER HUGHES</div><div>a GE company</div><div>GE</div><div>ECLIPS</div></div>	<div>COMPANY</div> <div>LARAMIE ENERGY II LLC</div>	<div>FILE NO:</div> <div></div>
	<div>WELL</div> <div>CC 0697-03-13W</div>	<div>API NO:</div> <div>05045237940000</div>
	<div>FIELD</div> <div>GRAND VALLEY</div>	
	<div>COUNTY</div> <div>GARFIELD</div>	<div>STATE</div> <div>COLORADO</div>
	<div>LOCATION:</div> <div>LAT: 39.55830200 LONG:-108.20514600</div>	<div>ELEVATIONS:</div> <div>KB 8468 FT</div> <div>DF 8467 FT</div> <div>GL 8438 FT</div>
	<div>SEC</div> <div>3</div> <div>TWP</div> <div>6S</div> <div>RGE</div> <div>97W</div>	<div>DATE</div> <div>12-Jun-2018</div>



