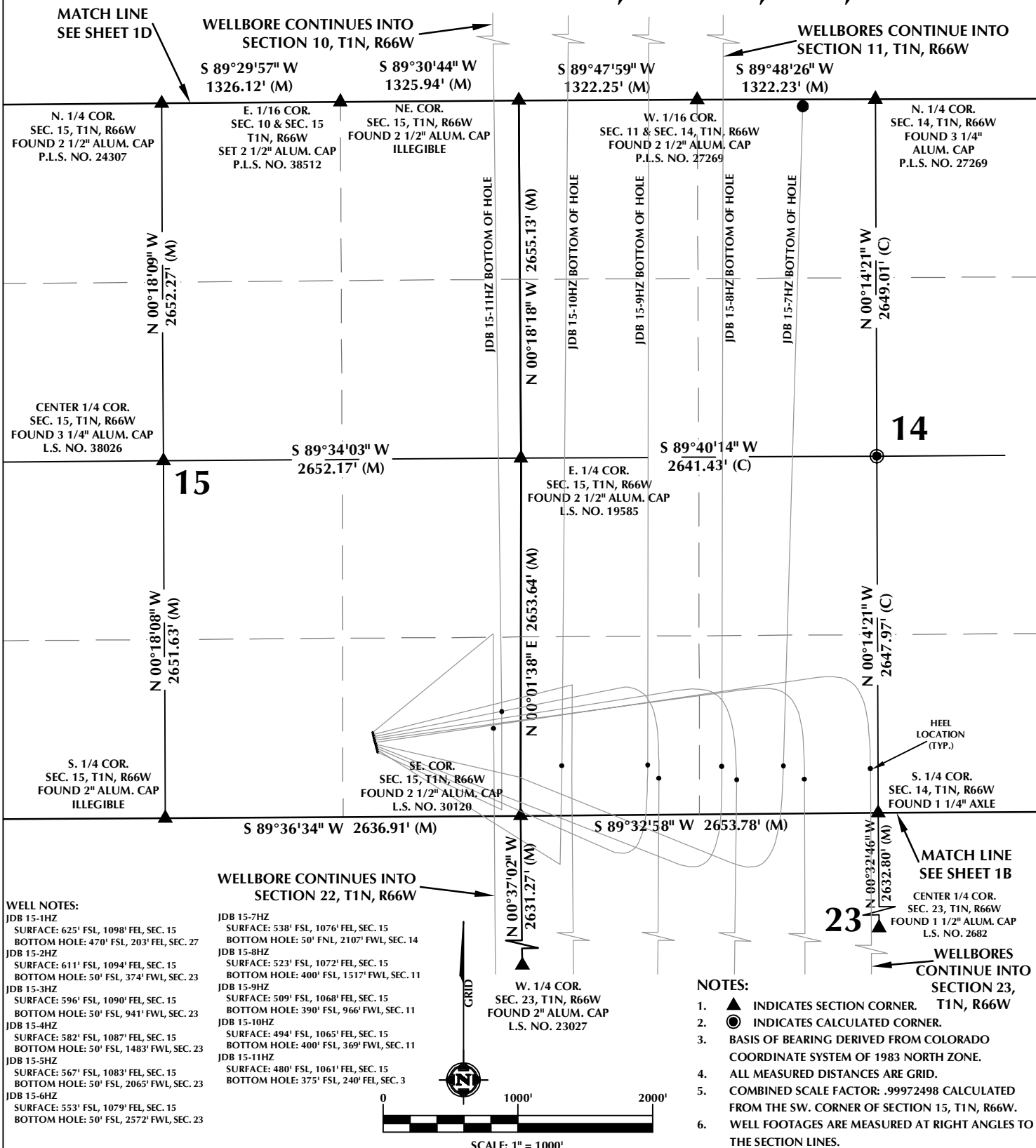


# MULTI-WELL PLAN SECTIONS 14, 15 & 23, T1N, R66W



## WELL PAD - JDB 16-15HZ

MULTI-WELL PLAN  
JDB 15-1HZ, JDB 15-2HZ, JDB 15-3HZ,  
JDB 15-4HZ, JDB 15-5HZ, JDB 15-6HZ,  
JDB 15-7HZ, JDB 15-8HZ, JDB 15-9HZ,  
JDB 15-10HZ & JDB 15-11HZ  
LOCATED IN SECTIONS 3, 10, 11, 14, 15, 22, 23 & 27  
T1N, R66W, 6TH P.M.  
WELD COUNTY, COLORADO

**Kerr-McGee Oil &  
Gas Onshore L.P.**  
1099 18th Street  
Denver, Colorado 80202



## CONSULTING, LLC

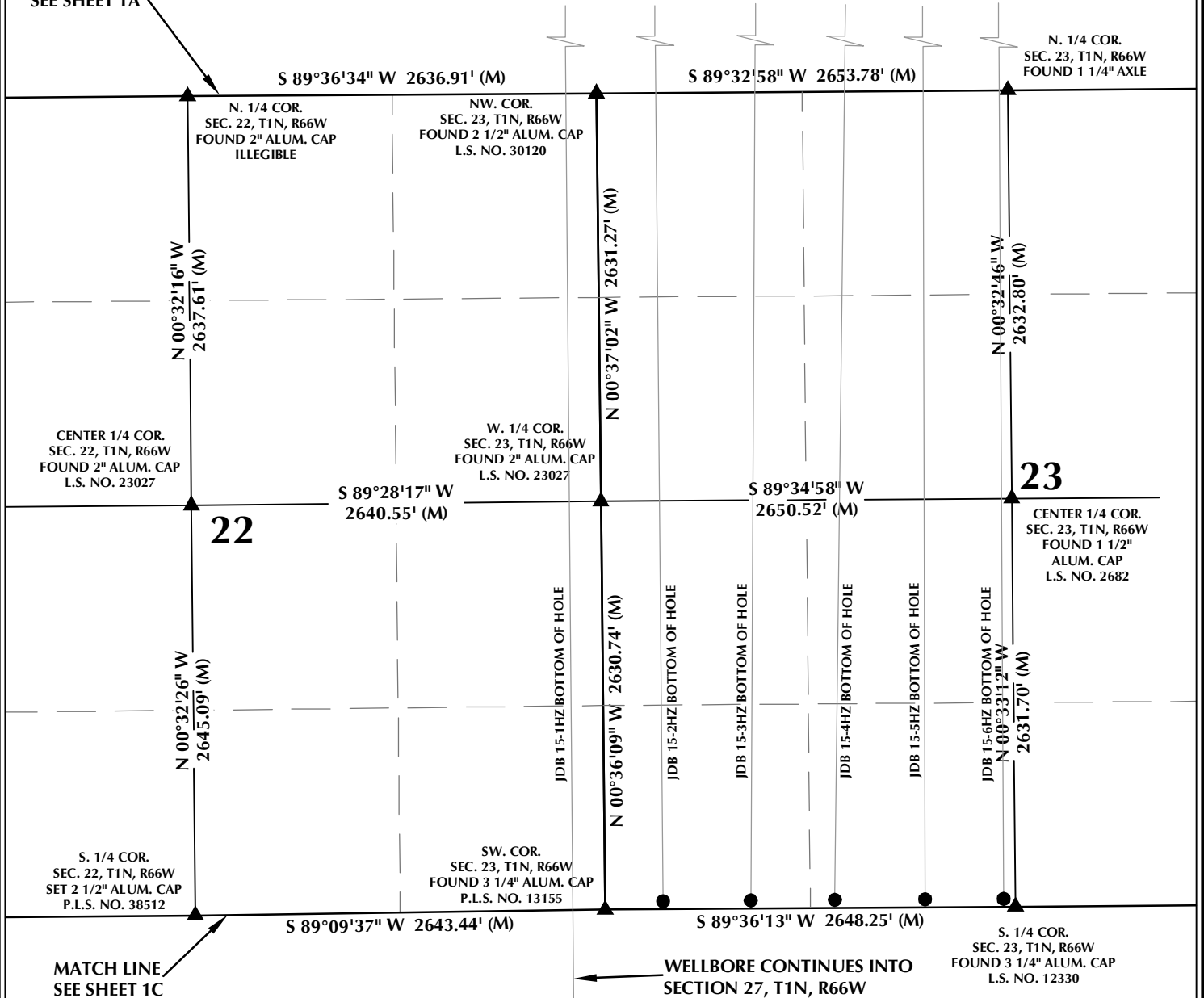
SHERIDAN OFFICE  
1095 Saberton Avenue  
Sheridan, Wyoming 82801  
Phone 307-674-0609

LOVELAND OFFICE  
6706 North Franklin Avenue  
Loveland, Colorado 80538  
Phone 970-776-4331

DRAFTED BY:	LMO	CHECKED BY:	RKF	SHEET NO:
DATE DRAFTED:	7/30/18	DATE SURVEYED:	6/25/18	1A
REVISED:		FILE NAME:	18-12	1A OF 1

# MULTI-WELL PLAN SECTIONS 22 & 23, T1N, R66W

MATCH LINE  
SEE SHEET 1A



## WELL NOTES:

JDB 15-1HZ  
SURFACE: 625' FSL, 1098' FEL, SEC. 15  
BOTTOM HOLE: 470' FSL, 203' FEL, SEC. 27

JDB 15-2HZ  
SURFACE: 611' FSL, 1094' FEL, SEC. 15  
BOTTOM HOLE: 50' FSL, 374' FWL, SEC. 23

JDB 15-3HZ  
SURFACE: 596' FSL, 1090' FEL, SEC. 15  
BOTTOM HOLE: 50' FSL, 941' FWL, SEC. 23

JDB 15-4HZ  
SURFACE: 582' FSL, 1087' FEL, SEC. 15  
BOTTOM HOLE: 50' FSL, 1483' FWL, SEC. 23

JDB 15-5HZ  
SURFACE: 567' FSL, 1083' FEL, SEC. 15  
BOTTOM HOLE: 50' FSL, 2065' FWL, SEC. 23

JDB 15-6HZ  
SURFACE: 553' FSL, 1079' FEL, SEC. 15  
BOTTOM HOLE: 50' FSL, 2572' FWL, SEC. 23

JDB 15-7HZ  
SURFACE: 538' FSL, 1076' FEL, SEC. 15  
BOTTOM HOLE: 50' FSL, 2107' FWL, SEC. 14

JDB 15-8HZ  
SURFACE: 523' FSL, 1072' FEL, SEC. 15  
BOTTOM HOLE: 400' FSL, 1517' FWL, SEC. 11

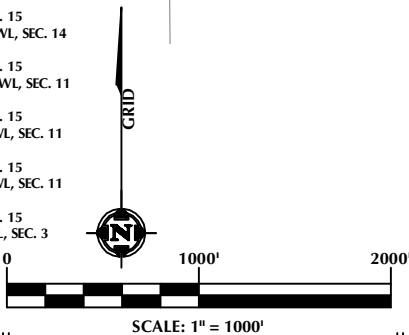
JDB 15-9HZ  
SURFACE: 509' FSL, 1068' FEL, SEC. 15  
BOTTOM HOLE: 390' FSL, 966' FWL, SEC. 11

JDB 15-10HZ  
SURFACE: 494' FSL, 1065' FEL, SEC. 15  
BOTTOM HOLE: 400' FSL, 369' FWL, SEC. 11

JDB 15-11HZ  
SURFACE: 480' FSL, 1061' FEL, SEC. 15  
BOTTOM HOLE: 375' FSL, 240' FEL, SEC. 3

## NOTES:

- ▲ INDICATES SECTION CORNER.
- INDICATES CALCULATED CORNER.
- BASIS OF BEARING DERIVED FROM COLORADO COORDINATE SYSTEM OF 1983 NORTH ZONE.
- ALL MEASURED DISTANCES ARE GRID.
- COMBINED SCALE FACTOR: .99972498 CALCULATED FROM THE SW. CORNER OF SECTION 15, T1N, R66W.
- WELL FOOTAGES ARE MEASURED AT RIGHT ANGLES TO THE SECTION LINES.



## WELL PAD - JDB 16-15HZ

MULTI-WELL PLAN  
JDB 15-1HZ, JDB 15-2HZ, JDB 15-3HZ,  
JDB 15-4HZ, JDB 15-5HZ, JDB 15-6HZ,  
JDB 15-7HZ, JDB 15-8HZ, JDB 15-9HZ,  
JDB 15-10HZ & JDB 15-11HZ  
LOCATED IN SECTIONS 3, 10, 11, 14, 15, 22, 23 & 27  
T1N, R66W, 6TH P.M.  
WELD COUNTY, COLORADO

**Kerr-McGee Oil &  
Gas Onshore L.P.**  
1099 18th Street  
Denver, Colorado 80202



## CONSULTING, LLC

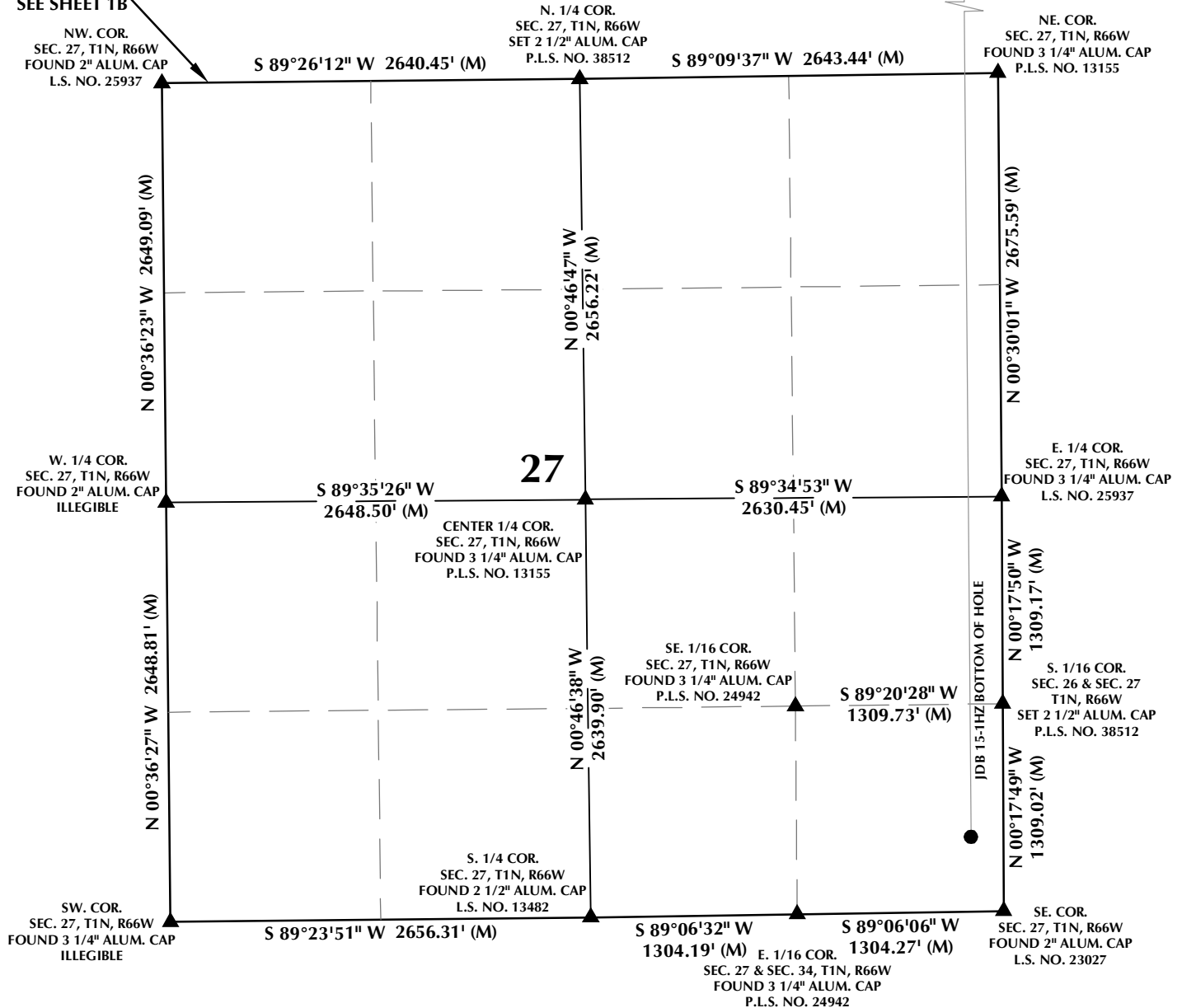
**SHERIDAN OFFICE**  
1095 Saberton Avenue  
Sheridan, Wyoming 82801  
Phone 307-674-0609

**LOVELAND OFFICE**  
6706 North Franklin Avenue  
Loveland, Colorado 80538  
Phone 970-776-4331

DRAFTED BY:	LMO	CHECKED BY:	RKF	SHEET NO:
DATE DRAFTED:	7/30/18	DATE SURVEYED:	6/25/18	<b>1B</b>
REVISED:		FILE NAME:	18-12	1B OF 1

# MULTI-WELL PLAN SECTION 27, T1N, R66W

MATCH LINE  
SEE SHEET 1B



## WELL NOTES:

JDB 15-1HZ  
SURFACE: 625' FSL, 1098' FEL, SEC. 15  
BOTTOM HOLE: 470' FSL, 203' FEL, SEC. 27

JDB 15-2HZ  
SURFACE: 611' FSL, 1094' FEL, SEC. 15  
BOTTOM HOLE: 50' FSL, 374' FWL, SEC. 23

JDB 15-3HZ  
SURFACE: 596' FSL, 1090' FEL, SEC. 15  
BOTTOM HOLE: 50' FSL, 941' FWL, SEC. 23

JDB 15-4HZ  
SURFACE: 582' FSL, 1087' FEL, SEC. 15  
BOTTOM HOLE: 50' FSL, 1483' FWL, SEC. 23

JDB 15-5HZ  
SURFACE: 567' FSL, 1083' FEL, SEC. 15  
BOTTOM HOLE: 50' FSL, 2065' FWL, SEC. 23

JDB 15-6HZ  
SURFACE: 553' FSL, 1079' FEL, SEC. 15  
BOTTOM HOLE: 50' FSL, 2572' FWL, SEC. 23

JDB 15-7HZ  
SURFACE: 538' FSL, 1076' FEL, SEC. 15  
BOTTOM HOLE: 50' FSL, 2107' FWL, SEC. 14

JDB 15-8HZ  
SURFACE: 523' FSL, 1072' FEL, SEC. 15  
BOTTOM HOLE: 400' FSL, 1517' FWL, SEC. 11

JDB 15-9HZ  
SURFACE: 509' FSL, 1068' FEL, SEC. 15  
BOTTOM HOLE: 390' FSL, 966' FWL, SEC. 11

JDB 15-10HZ  
SURFACE: 494' FSL, 1065' FEL, SEC. 15  
BOTTOM HOLE: 400' FSL, 369' FWL, SEC. 11

JDB 15-11HZ  
SURFACE: 480' FSL, 1061' FEL, SEC. 15  
BOTTOM HOLE: 375' FSL, 240' FEL, SEC. 3

## NOTES:

- INDICATES SECTION CORNER.
- INDICATES CALCULATED CORNER.
- BASIS OF BEARING DERIVED FROM COLORADO COORDINATE SYSTEM OF 1983 NORTH ZONE.
- ALL MEASURED DISTANCES ARE GRID.
- COMBINED SCALE FACTOR: .99972498 CALCULATED FROM THE SW. CORNER OF SECTION 15, T1N, R66W.
- WELL FOOTAGES ARE MEASURED AT RIGHT ANGLES TO THE SECTION LINES.

## WELL PAD - JDB 16-15HZ

MULTI-WELL PLAN  
JDB 15-1HZ, JDB 15-2HZ, JDB 15-3HZ,  
JDB 15-4HZ, JDB 15-5HZ, JDB 15-6HZ,  
JDB 15-7HZ, JDB 15-8HZ, JDB 15-9HZ,  
JDB 15-10HZ & JDB 15-11HZ  
LOCATED IN SECTIONS 3, 10, 11, 14, 15, 22, 23 & 27  
T1N, R66W, 6TH P.M.  
WELD COUNTY, COLORADO

**Kerr-McGee Oil &  
Gas Onshore L.P.**  
1099 18th Street  
Denver, Colorado 80202



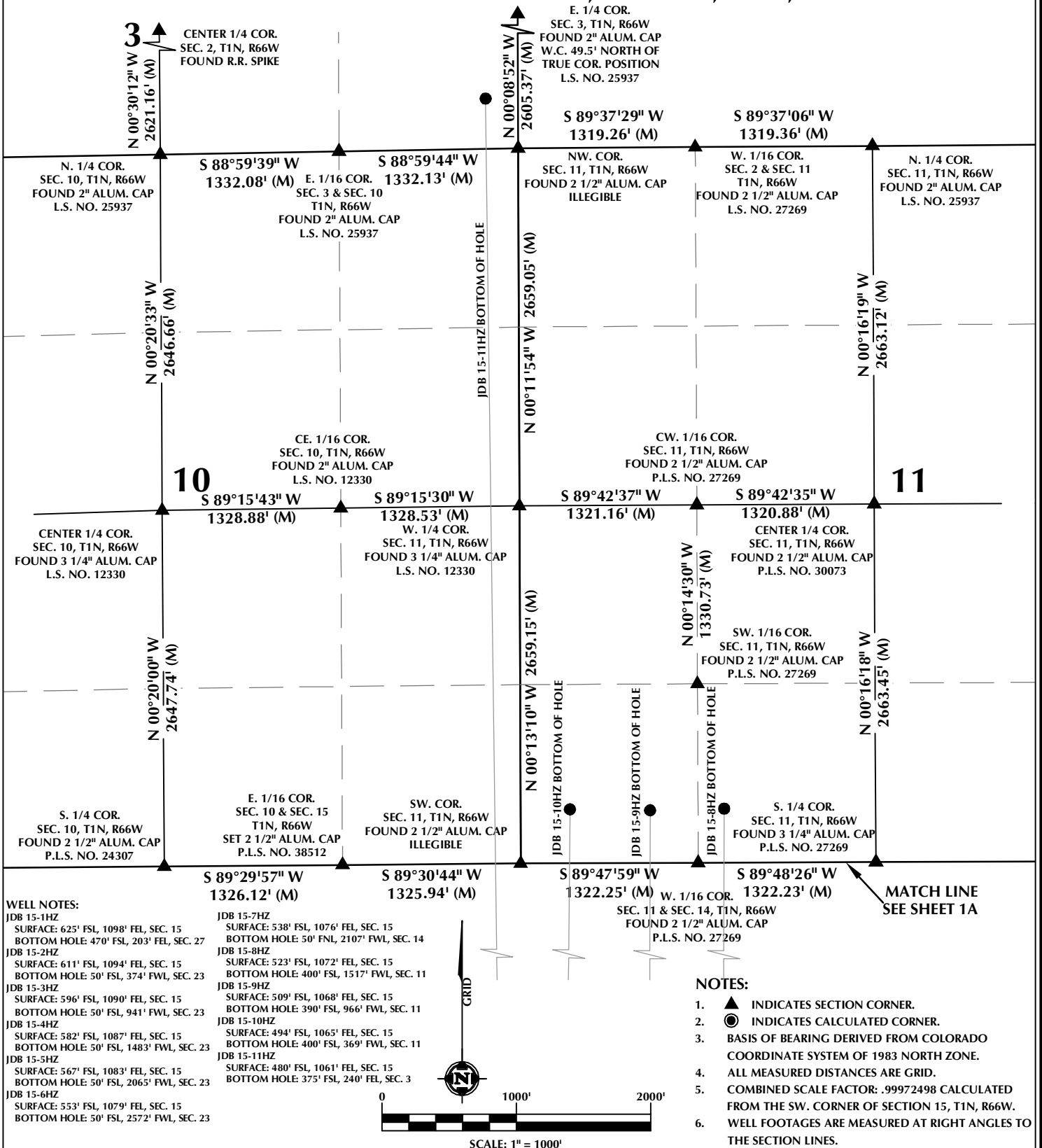
## CONSULTING, LLC

SHERIDAN OFFICE  
1095 Saberton Avenue  
Sheridan, Wyoming 82801  
Phone 307-674-0609

LOVELAND OFFICE  
6706 North Franklin Avenue  
Loveland, Colorado 80538  
Phone 970-776-4331

DRAFTED BY:	LMO	CHECKED BY:	RKF	SHEET NO:
DATE DRAFTED:	7/30/18	DATE SURVEYED:	6/25/18	1C
REVISED:		FILE NAME:	18-12	1C OF 1

# MULTI-WELL PLAN SECTIONS 3, 10 & 11, T1N, R66W



## WELL PAD - JDB 16-15HZ

MULTI-WELL PLAN  
JDB 15-1HZ, JDB 15-2HZ, JDB 15-3HZ,  
JDB 15-4HZ, JDB 15-5HZ, JDB 15-6HZ,  
JDB 15-7HZ, JDB 15-8HZ, JDB 15-9HZ,  
JDB 15-10HZ & JDB 15-11HZ  
LOCATED IN SECTIONS 3, 10, 11, 14, 15, 22, 23 & 27  
T1N, R66W, 6TH P.M.  
WELD COUNTY, COLORADO

**Kerr-McGee Oil &  
Gas Onshore L.P.**  
1099 18th Street  
Denver, Colorado 80202



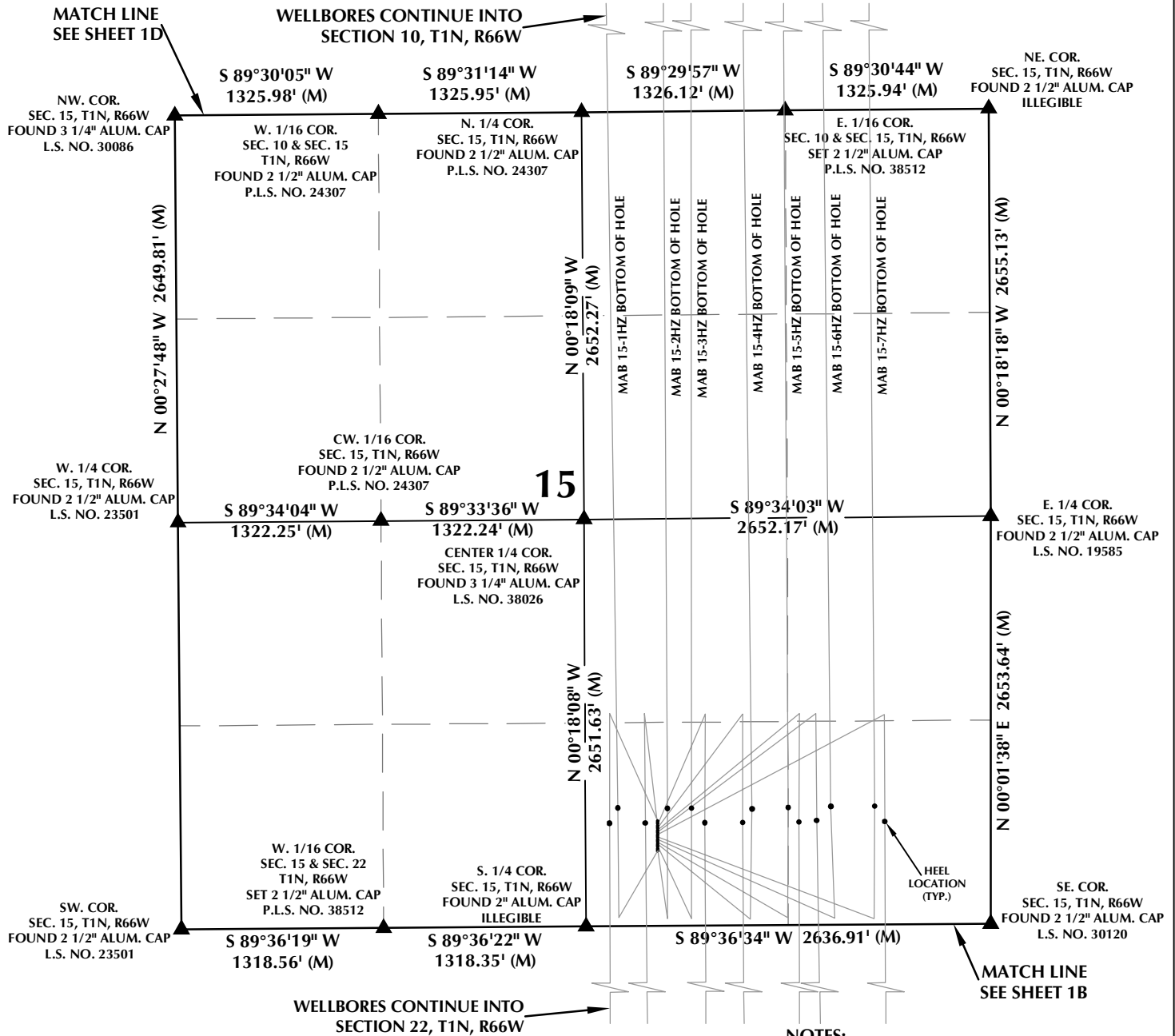
## CONSULTING, LLC

SHERIDAN OFFICE  
1095 Saberton Avenue  
Sheridan, Wyoming 82801  
Phone 307-674-0609

LOVELAND OFFICE  
6706 North Franklin Avenue  
Loveland, Colorado 80538  
Phone 970-776-4331

DRAFTED BY:	LMO	CHECKED BY:	RKF	SHEET NO:
DATE DRAFTED:	7/30/18	DATE SURVEYED:	6/25/18	<b>1D</b>
REVISED:		FILE NAME:	18-12	1D OF 1

# MULTI-WELL PLAN SECTION 15, T1N, R66W



## WELL NOTES:

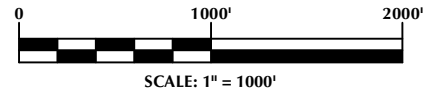
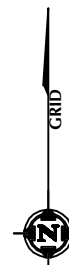
MAB 15-1HZ  
SURFACE: 488' FSL, 2171' FEL, SEC. 15  
BOTTOM HOLE: 355' FSL, 2542' FEL, SEC. 3  
MAB 15-2HZ  
SURFACE: 503' FSL, 2171' FEL, SEC. 15  
BOTTOM HOLE: 375' FSL, 2128' FEL, SEC. 3  
MAB 15-3HZ  
SURFACE: 518' FSL, 2171' FEL, SEC. 15  
BOTTOM HOLE: 311' FSL, 1925' FEL, SEC. 3  
MAB 15-4HZ  
SURFACE: 533' FSL, 2171' FEL, SEC. 15  
BOTTOM HOLE: 300' FSL, 1636' FEL, SEC. 3  
MAB 15-5HZ  
SURFACE: 548' FSL, 2171' FEL, SEC. 15  
BOTTOM HOLE: 316' FSL, 1345' FEL, SEC. 3

MAB 15-6HZ  
SURFACE: 563' FSL, 2171' FEL, SEC. 15  
BOTTOM HOLE: 375' FSL, 1114' FEL, SEC. 3  
MAB 15-7HZ  
SURFACE: 578' FSL, 2171' FEL, SEC. 15  
BOTTOM HOLE: 340' FSL, 798' FEL, SEC. 3  
MAB 15-8HZ  
SURFACE: 593' FSL, 2171' FEL, SEC. 15  
BOTTOM HOLE: 470' FSL, 719' FEL, SEC. 27  
MAB 15-9HZ  
SURFACE: 608' FSL, 2171' FEL, SEC. 15  
BOTTOM HOLE: 470' FSL, 1025' FEL, SEC. 27  
MAB 15-10HZ  
SURFACE: 623' FSL, 2171' FEL, SEC. 15  
BOTTOM HOLE: 470' FSL, 1320' FEL, SEC. 27

MAB 15-11HZ  
SURFACE: 638' FSL, 2171' FEL, SEC. 15  
BOTTOM HOLE: 470' FSL, 1627' FEL, SEC. 27  
MAB 15-12HZ  
SURFACE: 653' FSL, 2171' FEL, SEC. 15  
BOTTOM HOLE: 470' FSL, 1890' FEL, SEC. 27  
MAB 15-13HZ  
SURFACE: 668' FSL, 2171' FEL, SEC. 15  
BOTTOM HOLE: 471' FSL, 2227' FEL, SEC. 27  
MAB 15-14HZ  
SURFACE: 683' FSL, 2171' FEL, SEC. 15  
BOTTOM HOLE: 471' FSL, 2535' FEL, SEC. 27

## NOTES:

- ▲ INDICATES SECTION CORNER.
- INDICATES CALCULATED CORNER.
- BASIS OF BEARING DERIVED FROM COLORADO COORDINATE SYSTEM OF 1983 NORTH ZONE.
- ALL MEASURED DISTANCES ARE GRID.
- COMBINED SCALE FACTOR: .99972498 CALCULATED FROM THE SW. CORNER OF SECTION 15, T1N, R66W.
- WELL FOOTAGES ARE MEASURED AT RIGHT ANGLES TO THE SECTION LINES.



## WELL PAD - MAB 15-15HZ

MULTI-WELL PLAN  
MAB 15-1HZ, MAB 15-2HZ, MAB 15-3HZ,  
MAB 15-4HZ, MAB 15-5HZ, MAB 15-6HZ, MAB 15-7HZ,  
MAB 15-8HZ, MAB 15-9HZ, MAB 15-10HZ, MAB 15-11HZ,  
MAB 15-12HZ, MAB 15-13HZ & MAB 15-14HZ  
LOCATED IN SECTIONS 3, 10, 15, 22, & 27  
T1N, R66W, 6TH P.M.  
WELD COUNTY, COLORADO

**Kerr-McGee Oil &  
Gas Onshore L.P.**  
1099 18th Street  
Denver, Colorado 80202



## CONSULTING, LLC

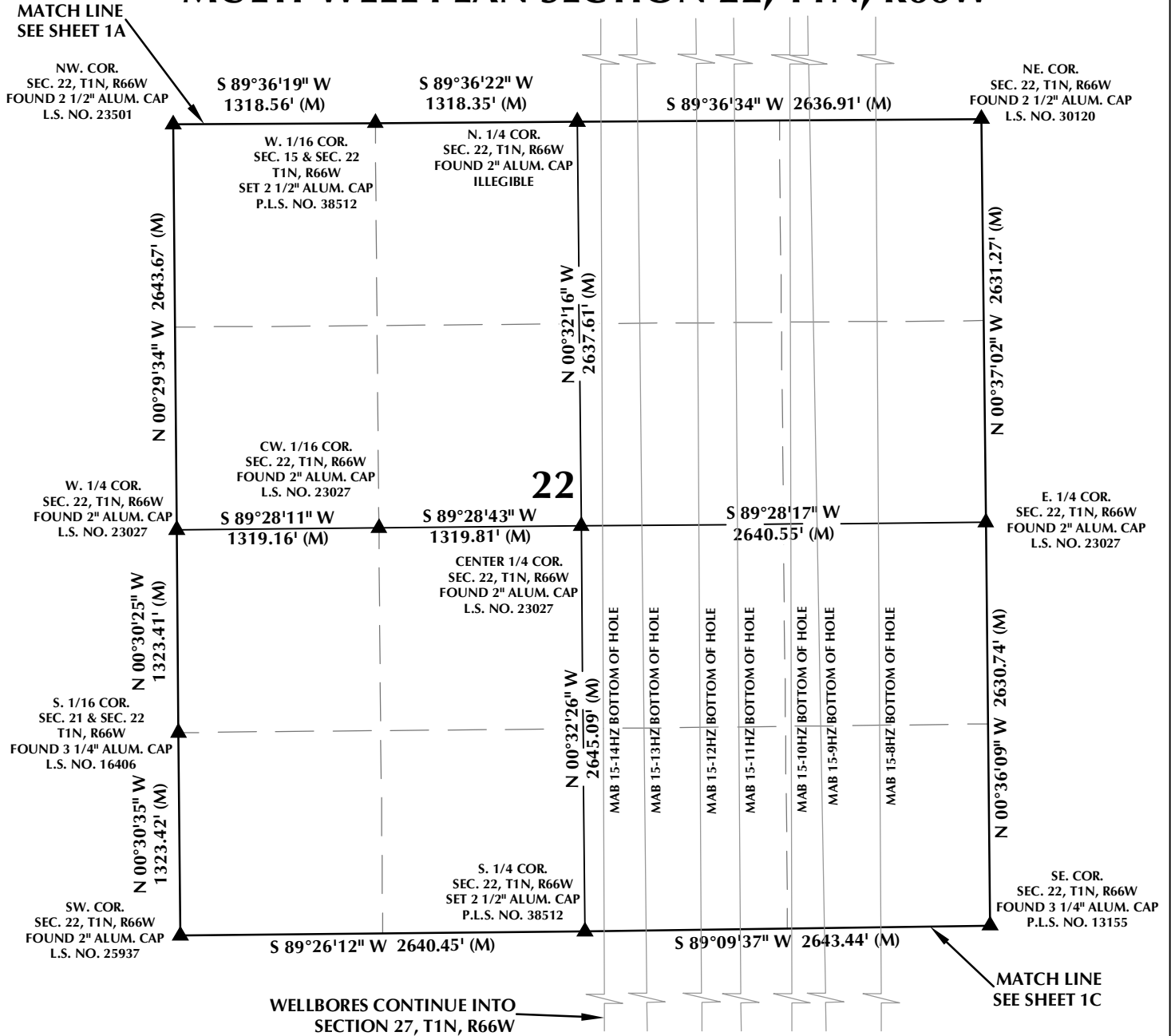
SHERIDAN OFFICE  
1095 Saberton Avenue  
Sheridan, Wyoming 82801  
Phone 307-674-0609

LOVELAND OFFICE  
6706 North Franklin Avenue  
Loveland, Colorado 80538  
Phone 970-776-4331

DRAFTED BY:	LMO	CHECKED BY:	RKF	SHEET NO:
DATE DRAFTED:	7/24/18	DATE SURVEYED:	6/25/18	1A
REVISED:		FILE NAME:	18-12	1A OF 1



# MULTI-WELL PLAN SECTION 22, T1N, R66W



## WELL NOTES:

MAB 15-1HZ  
SURFACE: 488' FSL, 2171' FEL, SEC. 15  
BOTTOM HOLE: 355' FSL, 2542' FEL, SEC. 3  
MAB 15-2HZ  
SURFACE: 503' FSL, 2171' FEL, SEC. 15  
BOTTOM HOLE: 375' FSL, 2128' FEL, SEC. 3  
MAB 15-3HZ  
SURFACE: 518' FSL, 2171' FEL, SEC. 15  
BOTTOM HOLE: 311' FSL, 1925' FEL, SEC. 3  
MAB 15-4HZ  
SURFACE: 533' FSL, 2171' FEL, SEC. 15  
BOTTOM HOLE: 300' FSL, 1636' FEL, SEC. 3  
MAB 15-5HZ  
SURFACE: 548' FSL, 2171' FEL, SEC. 15  
BOTTOM HOLE: 316' FSL, 1345' FEL, SEC. 3

MAB 15-6HZ  
SURFACE: 563' FSL, 2171' FEL, SEC. 15  
BOTTOM HOLE: 375' FSL, 1114' FEL, SEC. 3  
MAB 15-7HZ  
SURFACE: 578' FSL, 2171' FEL, SEC. 15  
BOTTOM HOLE: 340' FSL, 798' FEL, SEC. 3  
MAB 15-8HZ  
SURFACE: 593' FSL, 2171' FEL, SEC. 15  
BOTTOM HOLE: 470' FSL, 719' FEL, SEC. 27  
MAB 15-9HZ  
SURFACE: 608' FSL, 2171' FEL, SEC. 15  
BOTTOM HOLE: 470' FSL, 1025' FEL, SEC. 27  
MAB 15-10HZ  
SURFACE: 623' FSL, 2171' FEL, SEC. 15  
BOTTOM HOLE: 470' FSL, 1320' FEL, SEC. 27

MAB 15-11HZ  
SURFACE: 638' FSL, 2171' FEL, SEC. 15  
BOTTOM HOLE: 470' FSL, 1627' FEL, SEC. 27  
MAB 15-12HZ  
SURFACE: 653' FSL, 2171' FEL, SEC. 15  
BOTTOM HOLE: 470' FSL, 1890' FEL, SEC. 27  
MAB 15-13HZ  
SURFACE: 668' FSL, 2171' FEL, SEC. 15  
BOTTOM HOLE: 471' FSL, 2227' FEL, SEC. 27  
MAB 15-14HZ  
SURFACE: 683' FSL, 2171' FEL, SEC. 15  
BOTTOM HOLE: 471' FSL, 2535' FEL, SEC. 27

## NOTES:

- ▲ INDICATES SECTION CORNER.
- INDICATES CALCULATED CORNER.
- BASIS OF BEARING DERIVED FROM COLORADO COORDINATE SYSTEM OF 1983 NORTH ZONE.
- ALL MEASURED DISTANCES ARE GRID.
- COMBINED SCALE FACTOR: .99972498 CALCULATED FROM THE SW. CORNER OF SECTION 15, T1N, R66W.
- WELL FOOTAGES ARE MEASURED AT RIGHT ANGLES TO THE SECTION LINES.



SCALE: 1" = 1000'

## WELL PAD - MAB 15-15HZ

MULTI-WELL PLAN  
MAB 15-1HZ, MAB 15-2HZ, MAB 15-3HZ,  
MAB 15-4HZ, MAB 15-5HZ, MAB 15-6HZ, MAB 15-7HZ,  
MAB 15-8HZ, MAB 15-9HZ, MAB 15-10HZ, MAB 15-11HZ,  
MAB 15-12HZ, MAB 15-13HZ & MAB 15-14HZ  
LOCATED IN SECTIONS 3, 10, 15, 22, & 27  
T1N, R66W, 6TH P.M.  
WELD COUNTY, COLORADO

**Kerr-McGee Oil &  
Gas Onshore L.P.**  
1099 18th Street  
Denver, Colorado 80202



## CONSULTING, LLC

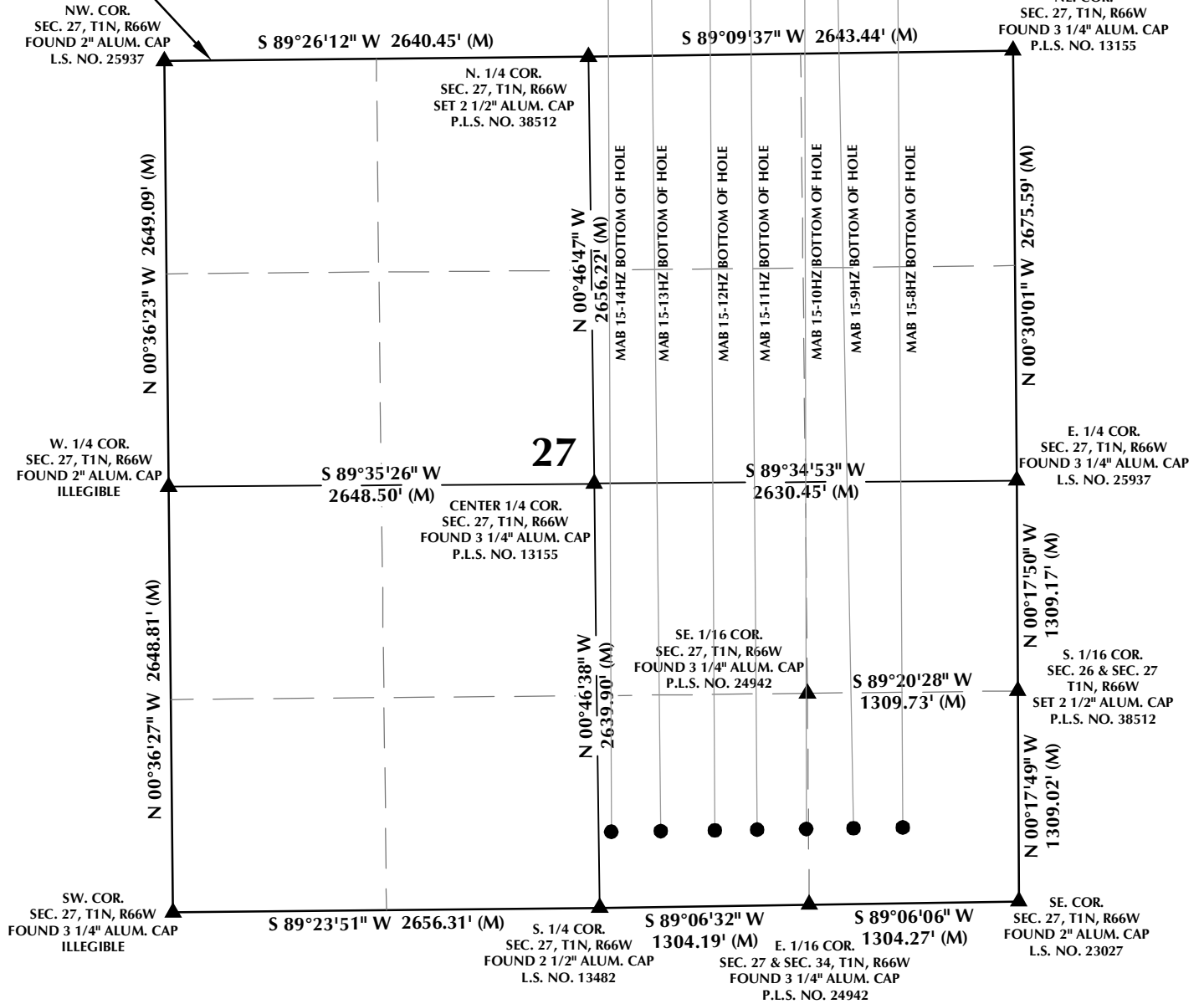
SHERIDAN OFFICE  
1095 Saberton Avenue  
Sheridan, Wyoming 82801  
Phone 307-674-0609

LOVELAND OFFICE  
6706 North Franklin Avenue  
Loveland, Colorado 80538  
Phone 970-776-4331

DRAFTED BY:	LMO	CHECKED BY:	RKF	SHEET NO:
DATE DRAFTED:	7/24/18	DATE SURVEYED:	6/25/18	<b>1B</b>
REVISED:		FILE NAME:	18-12	1B OF 1

# MULTI-WELL PLAN SECTION 27, T1N, R66W

MATCH LINE  
SEE SHEET 1B



## WELL NOTES:

MAB 15-1HZ  
SURFACE: 488' FSL, 2171' FEL, SEC. 15  
BOTTOM HOLE: 355' FSL, 2542' FEL, SEC. 3

MAB 15-2HZ  
SURFACE: 503' FSL, 2171' FEL, SEC. 15  
BOTTOM HOLE: 375' FSL, 2128' FEL, SEC. 3

MAB 15-3HZ  
SURFACE: 518' FSL, 2171' FEL, SEC. 15  
BOTTOM HOLE: 311' FSL, 1925' FEL, SEC. 3

MAB 15-4HZ  
SURFACE: 533' FSL, 2171' FEL, SEC. 15  
BOTTOM HOLE: 300' FSL, 1636' FEL, SEC. 3

MAB 15-5HZ  
SURFACE: 548' FSL, 2171' FEL, SEC. 15  
BOTTOM HOLE: 316' FSL, 1345' FEL, SEC. 3

MAB 15-6HZ  
SURFACE: 563' FSL, 2171' FEL, SEC. 15  
BOTTOM HOLE: 375' FSL, 1114' FEL, SEC. 3

MAB 15-7HZ  
SURFACE: 578' FSL, 2171' FEL, SEC. 15  
BOTTOM HOLE: 340' FSL, 798' FEL, SEC. 3

MAB 15-8HZ  
SURFACE: 593' FSL, 2171' FEL, SEC. 15  
BOTTOM HOLE: 470' FSL, 719' FEL, SEC. 27

MAB 15-9HZ  
SURFACE: 608' FSL, 2171' FEL, SEC. 15  
BOTTOM HOLE: 470' FSL, 1025' FEL, SEC. 27

MAB 15-10HZ  
SURFACE: 623' FSL, 2171' FEL, SEC. 15  
BOTTOM HOLE: 470' FSL, 1320' FEL, SEC. 27

MAB 15-11HZ  
SURFACE: 638' FSL, 2171' FEL, SEC. 15  
BOTTOM HOLE: 470' FSL, 1627' FEL, SEC. 27

MAB 15-12HZ  
SURFACE: 653' FSL, 2171' FEL, SEC. 15  
BOTTOM HOLE: 470' FSL, 1890' FEL, SEC. 27

MAB 15-13HZ  
SURFACE: 668' FSL, 2171' FEL, SEC. 15  
BOTTOM HOLE: 471' FSL, 2227' FEL, SEC. 27

MAB 15-14HZ  
SURFACE: 683' FSL, 2171' FEL, SEC. 15  
BOTTOM HOLE: 471' FSL, 2535' FEL, SEC. 27

## NOTES:

- ▲ INDICATES SECTION CORNER.
- INDICATES CALCULATED CORNER.
- BASIS OF BEARING DERIVED FROM COLORADO COORDINATE SYSTEM OF 1983 NORTH ZONE.
- ALL MEASURED DISTANCES ARE GRID.
- COMBINED SCALE FACTOR: .99972498 CALCULATED FROM THE SW. CORNER OF SECTION 15, T1N, R66W.
- WELL FOOTAGES ARE MEASURED AT RIGHT ANGLES TO THE SECTION LINES.



SCALE: 1" = 1000'

## WELL PAD - MAB 15-15HZ

MULTI-WELL PLAN  
MAB 15-1HZ, MAB 15-2HZ, MAB 15-3HZ,  
MAB 15-4HZ, MAB 15-5HZ, MAB 15-6HZ, MAB 15-7HZ,  
MAB 15-8HZ, MAB 15-9HZ, MAB 15-10HZ, MAB 15-11HZ,  
MAB 15-12HZ, MAB 15-13HZ & MAB 15-14HZ  
LOCATED IN SECTIONS 3, 10, 15, 22, & 27  
T1N, R66W, 6TH P.M.  
WELD COUNTY, COLORADO

**Kerr-McGee Oil &  
Gas Onshore L.P.**  
1099 18th Street  
Denver, Colorado 80202



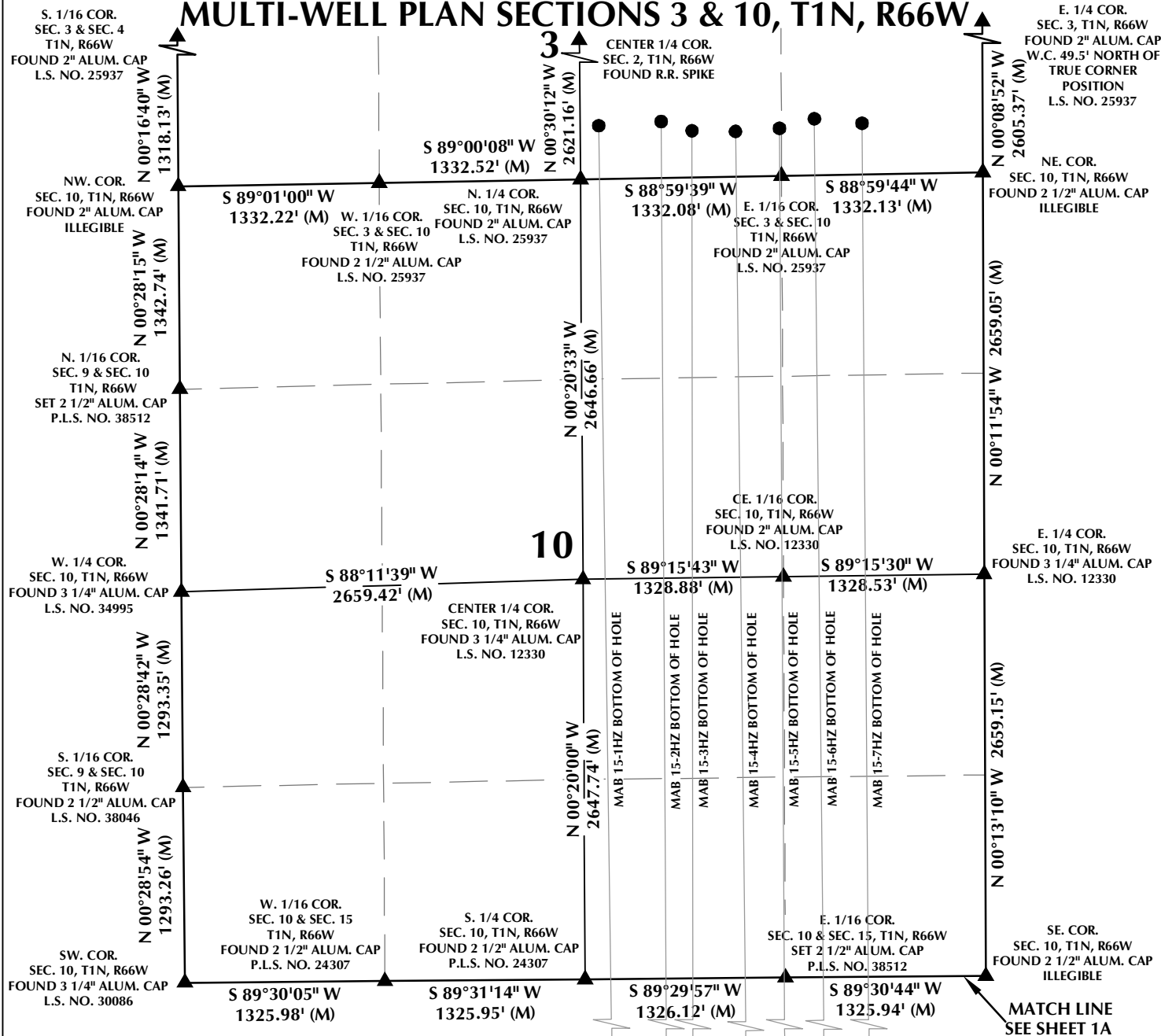
## CONSULTING, LLC

SHERIDAN OFFICE  
1095 Saberton Avenue  
Sheridan, Wyoming 82801  
Phone 307-674-0609

LOVELAND OFFICE  
6706 North Franklin Avenue  
Loveland, Colorado 80538  
Phone 970-776-4331

DRAFTED BY:	LMO	CHECKED BY:	RKF	SHEET NO:
DATE DRAFTED:	7/24/18	DATE SURVEYED:	6/25/18	1C
REVISED:		FILE NAME:	18-12	1C OF 1

# MULTI-WELL PLAN SECTIONS 3 & 10, T1N, R66W



## NOTES:

- ▲ INDICATES SECTION CORNER.
- INDICATES CALCULATED CORNER.
- BASIS OF BEARING DERIVED FROM COLORADO COORDINATE SYSTEM OF 1983 NORTH ZONE.
- ALL MEASURED DISTANCES ARE GRID.
- COMBINED SCALE FACTOR: .99972498 CALCULATED FROM THE SW. CORNER OF SECTION 15, T1N, R66W.
- WELL FOOTAGES ARE MEASURED AT RIGHT ANGLES TO THE SECTION LINES.



SCALE: 1" = 1000'

## WELL PAD - MAB 15-15HZ

MULTI-WELL PLAN  
MAB 15-1HZ, MAB 15-2HZ, MAB 15-3HZ,  
MAB 15-4HZ, MAB 15-5HZ, MAB 15-6HZ, MAB 15-7HZ,  
MAB 15-8HZ, MAB 15-9HZ, MAB 15-10HZ, MAB 15-11HZ,  
MAB 15-12HZ, MAB 15-13HZ & MAB 15-14HZ  
LOCATED IN SECTIONS 3, 10, 15, 22, & 27  
T1N, R66W, 6TH P.M.  
WELD COUNTY, COLORADO

**Kerr-McGee Oil &  
Gas Onshore L.P.**  
1099 18th Street  
Denver, Colorado 80202



## CONSULTING, LLC

SHERIDAN OFFICE  
1095 Saberton Avenue  
Sheridan, Wyoming 82801  
Phone 307-674-0609

LOVELAND OFFICE  
6706 North Franklin Avenue  
Loveland, Colorado 80538  
Phone 970-776-4331

DRAFTED BY:	LMO	CHECKED BY:	RKF	SHEET NO:
DATE DRAFTED:	7/24/18	DATE SURVEYED:	6/25/18	1D
REVISED:		FILE NAME:	18-12	1D OF 1