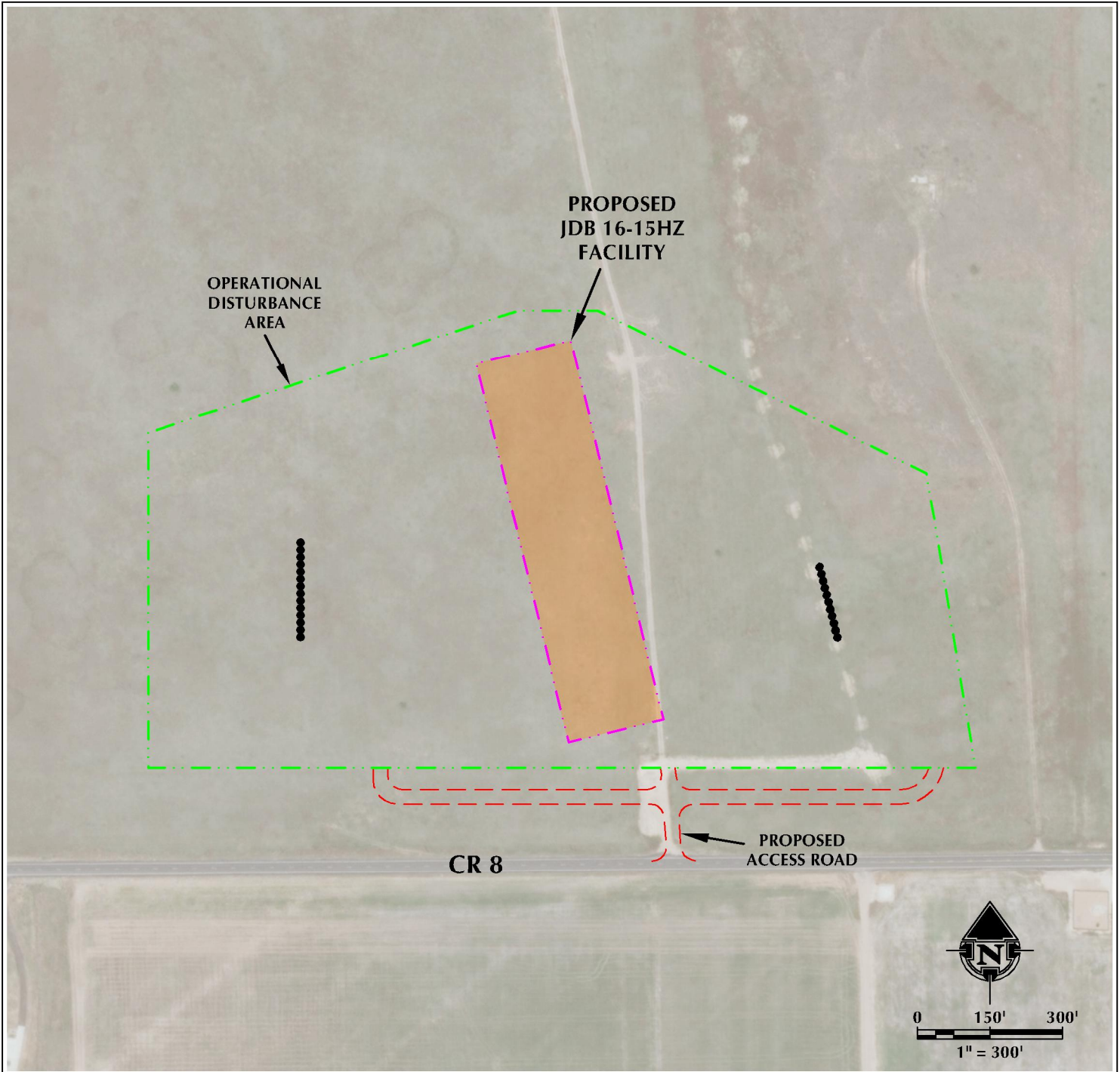


JDB 16-15HZ ACCESS MAP

S1/2 SE1/4 SECTION 15, TOWNSHIP 1 NORTH, RANGE 66 WEST, 6TH P.M.



LEGEND

- PROPOSED WELL
- - - ACCESS
- PROPOSED FACILITY
- - - DISTURBANCE BOUNDARY

INTERSECTION OF
ACCESS ROAD AND CR 8

LATITUDE: 40.044065°

LONGITUDE: -104.758906°



609 CONSULTING, LLC
LOVELAND OFFICE
6706 North Franklin Avenue
Loveland, Colorado 80538
Phone: 970-776-4331

SHERIDAN OFFICE
1095 Saberton Avenue
Sheridan, Wyoming 82801
Phone: 307-674-0609

DATE SURVEYED: 6/25/18
DATE: 7/24/18
DRAFTER: HJL
REVISED:

DATA SOURCES:
- AERIAL COURTESY OF ESRI, INC.

PREPARED FOR:
Kerr-McGee Oil & Gas Onshore L.P.