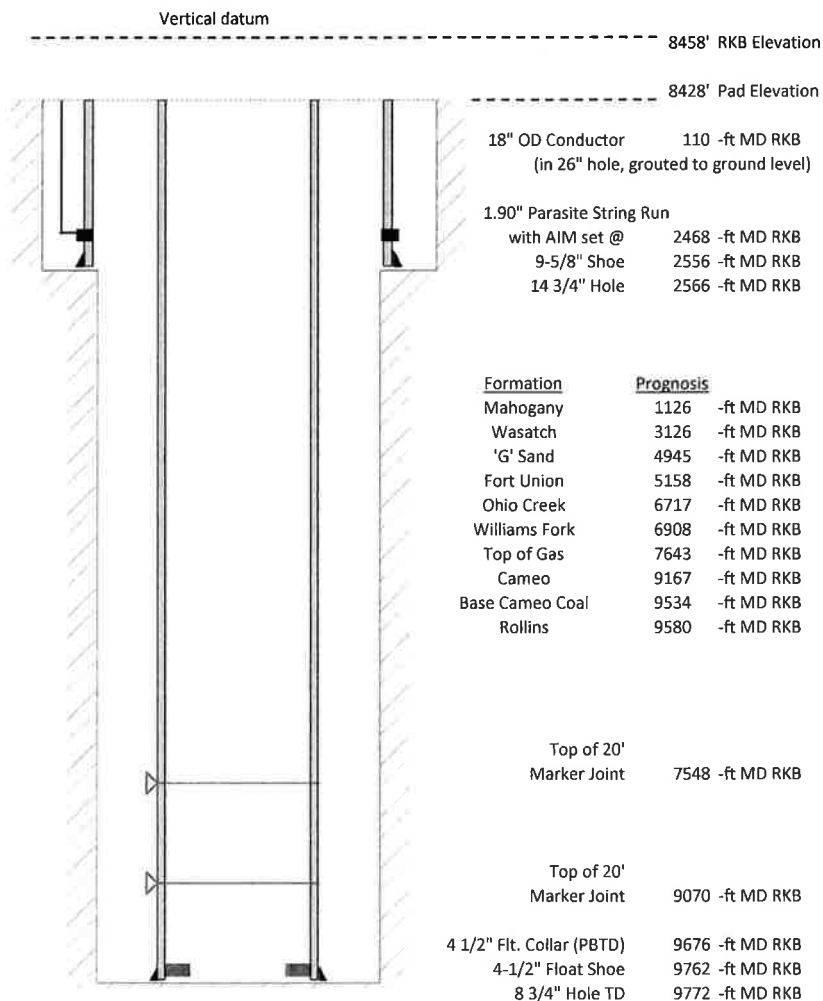


Laramie Energy, LLC
 CC 0697-03-12E
 Slot A-7
 H&P 522 (30-ft KB)

API # : 05-045-23803-00
 Lot 11/S3/T65/R97W/6th PM
 Garfield County, CO
 Date of diagram : 6/2/2018



Cementing details

8-5/8" 24# Surface Csg	Lead	Tail
Density (ppg)	12.3	12.8
Volume (sx)	1015	292
Yield (cf/sx)	2.38	2.11
Top (ft RKB)		
Bottom (ft RKB)		2556
Returns (full or partial)	none	none

4-1/2" 11.6# Prod Csg	Lead	Tail
Density (ppg)	12.5	13.0
Volume (sx)	1213	519
Yield (cf/sx)	1.94	2.06
Est Top (ft RKB)	1870	6165
Est Bottom (ft RKB)	6165	9762
Returns (full or partial)	partial	partial

Displacement
8.3 ppg
150 bbls

Other Remarks : Surface- no circulation. Top out with 155 sx 33 bbls 15.6# Production-
 lost circ at disp. 60 bbls spacer to surface