

CC 0697-03-12W  
Garfield County, CO  
Q180618 & RM-180531  
Design #4

Company Name: Laramie Energy, LLC  
CC 0697-03-12W  
Garfield County, CO  
Rig: H&P #522  
Created By: Will Jircik  
Date: 5/25/2018

PROJECT DETAILS: Garfield County, CO  
Geodetic System: US State Plane 1983  
Datum: North American Datum 1983  
Ellipsoid: GRS 1980  
Zone: Colorado Central Zone  
System Datum: Mean Sea Level

T

M

Azimuths to True North

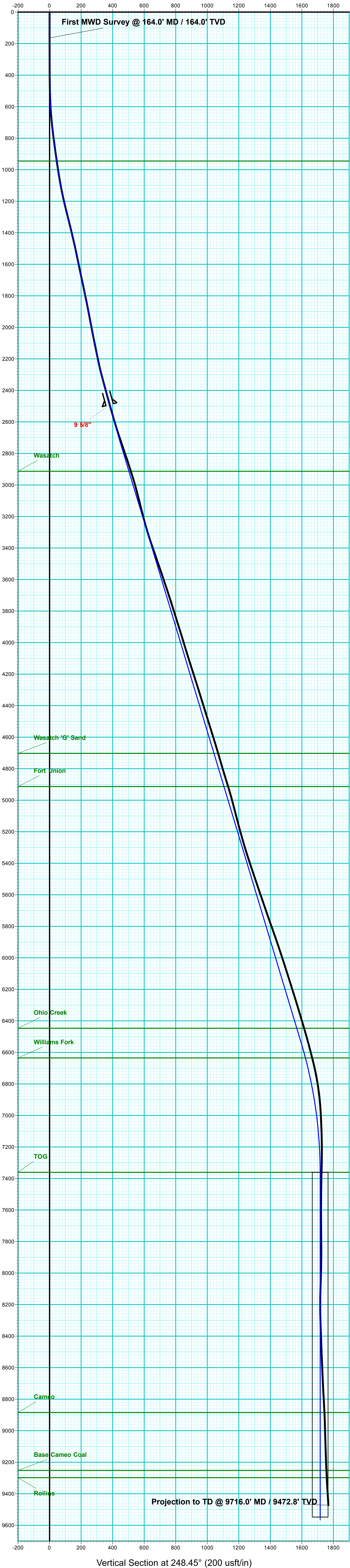
Magnetic North: 9.63°

Strength: 51411.0snT

Dip Angle: 65.59°

Date: 5/16/2018

Model: USER DEFINED



DESIGN TARGET DETAILS								
Name	TVD	+N/-S	+E/-W	Northing	Easting	Latitude	Longitude	Shape
PBHL - CC 0697-03-12W	9548.0	-630.3	-1596.4	1639031.78	2235784.15	39.556625	-108.210797	Circle (Radius: 50.0)

DESIGN #4 ANNOTATIONS								
MD	Inc	Azi	TVD	+N/-S	+E/-W	VSect Departure	Annotation	
2498.0	15.40	247.80	2459.5	-122.5	-352.1	372.5	0.0	Last MWD Survey
2558.0	15.40	247.80	2517.4	-128.6	-366.9	388.4	15.9	PTB
2700.0	15.40	247.80	2654.3	-142.8	-401.8	426.1	53.6	Build 2° / 100'
2768.5	16.77	247.80	2720.1	-150.0	-419.3	445.1	72.6	EOB @ 16.77° Inc. / 247.80° Azm
6752.2	16.77	247.80	6534.4	-584.2	-1483.6	1594.5	1222.0	Drop 2° / 100'
7590.7	0.00	0.00	7361.0	-630.3	-1596.4	1716.3	1343.9	EOD @ Vertical
9777.7	0.00	0.00	9548.0	-630.3	-1596.4	1716.3	1343.9	TD @ 9777.7' MD / 9548.0' TVD

FORMATION TOP DETAILS		
TVDPath	MDPath	Formation
945.0	947.5	Mahogany
2913.0	2970.0	Wasatch
4703.0	4839.5	Wasatch 'G' Sand
4913.0	5058.6	Fort Union
6447.0	6660.9	Ohio Creek
6635.0	6856.7	Williams Fork
7361.0	7590.7	TOG
8885.0	9114.7	Cameo
9252.0	9481.7	Base Cameo Coal
9298.0	9527.7	Rollins

WELL DETAILS: CC 0697-03-12W					
+N/-S	+E/-W	Northing	Easting	Latitude	Longitude
0.0	0.0	1639614.25	2237398.57	39.558355	-108.205135

ANNOTATIONS								
MD	Inc	Azi	TVD	+N/-S	+E/-W	VSecDeparture	Annotation	
164.0	0.40	326.60	164.0	0.5	-0.3	0.1	0.6	First MWD Survey @ 164.0' MD / 164.0' TVD
9716.0	3.80	234.60	9472.8	-669.2	-1637.1	1768.5	1826.6	Projection to TD @ 9716.0' MD / 9472.8' TVD

