



Kerr-McGee Oil & Gas Onshore LP

A subsidiary of Anadarko Petroleum Corporation

1099 18th Street
Denver, CO 80202
720-929-6000

September 27, 2018

Julie Murphy
Director, Colorado Oil and Gas Conservation Commission
Department of Natural Resources - The Chancery Building
1120 Lincoln Street, Suite 801
Denver, CO 80203

Re: **30 Day Certification Letter - 318A.e**

JDB 15-8HZ (Doc No. 401772732)

Township 1 North, Range 66 West

Section 15: SESE

Unit Acreage: 480 Acres

Proposed Spacing Unit:

01N66W: SEC 11: S2SW;

01N66W: SEC 14: W2;

01N66W: SEC 23: N2NW

Weld County, Colorado

Dear Director Murphy:

Kerr McGee Oil and Gas Onshore LP ("KMG") hereby certifies that KMG owns one hundred percent (100%) of the leasehold interest in the mineral rights in the proposed spacing unit. KMG hereby respectfully requests approval of this boundary well.

If you have any questions or issues regarding this permit, please contact me at (720) 929-6092.

Sincerely,

Kerr-McGee Oil and Gas Onshore LP

A blue ink signature of Craig Richardson, consisting of a stylized 'C' followed by a horizontal line.

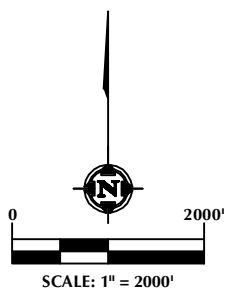
Craig Richardson
Regulatory Analyst II

Enclosure

DISTANCE FROM COMPLETED
PORTION OF WELLBORE TO
NEAREST UNIT BOUNDARY= 930'

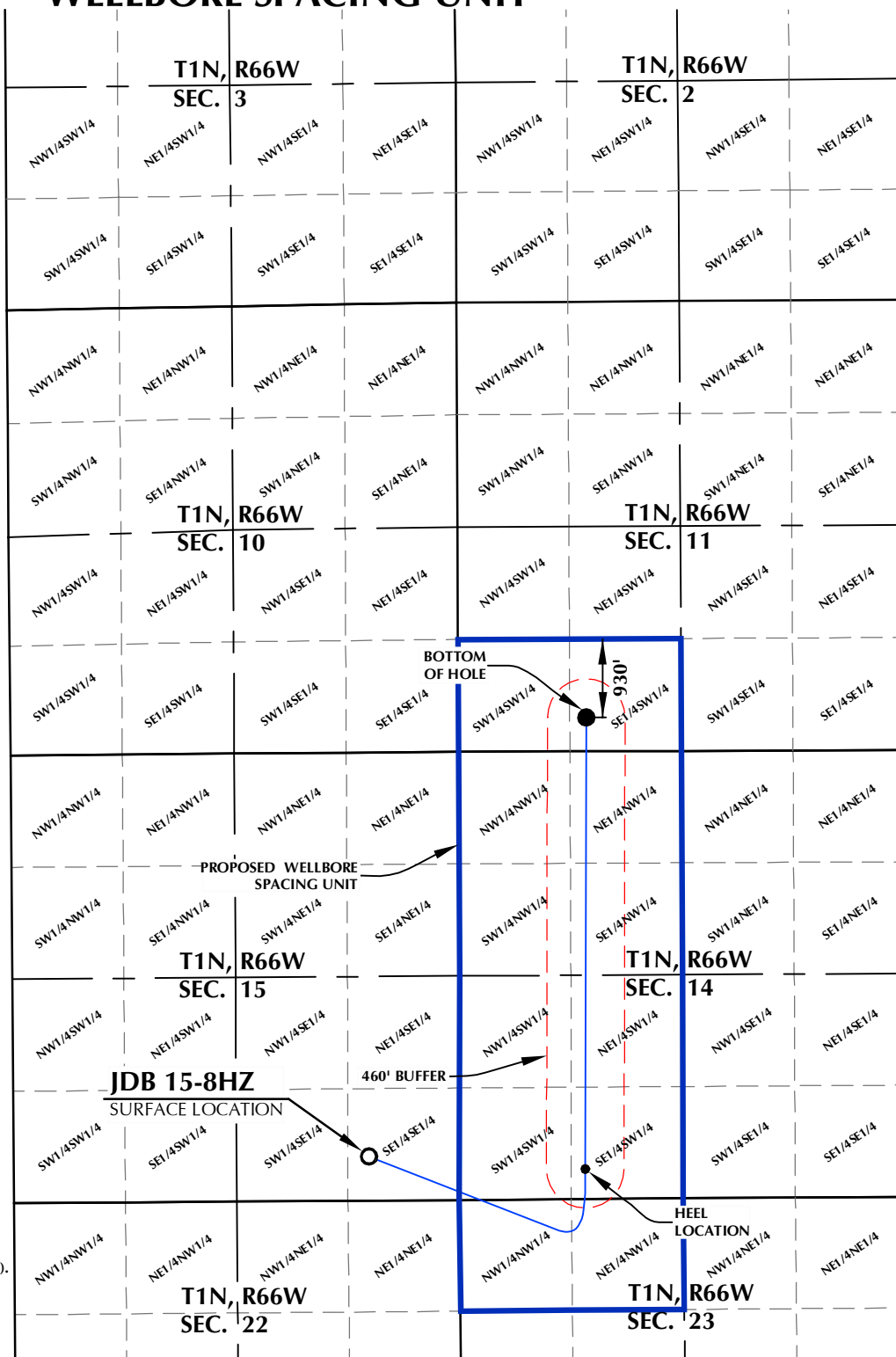
JDB 15-8HZ WELLBORE SPACING UNIT

SURFACE LOCATION: NAD 83
GROUND ELEVATION= 5153.5'
LATITUDE= 40.045445°
LONGITUDE= -104.757728°
LATITUDE= 40°02'43.603"
LONGITUDE= -104°45'27.821"
HEEL LOCATION: NAD 83
LATITUDE= 40.044976°
LONGITUDE= -104.748575°
LATITUDE= 40°02'41.912"
LONGITUDE= -104°44'54.871"
BOTTOM HOLE LOCATION: NAD 83
LATITUDE= 40.059655°
LONGITUDE= -104.748376°
LATITUDE= 40°03'34.758"
LONGITUDE= -104°44'54.154"



NOTES:

1. DRAWING LATITUDE AND LONGITUDE COORDINATES ARE NAD 83 (2011)(EPOCH:2010).
2. ELEVATION BASED ON NAVD88 (GEOID12B).
3. BASIS OF BEARING DERIVED FROM COLORADO COORDINATE SYSTEM OF 1983 NORTH ZONE.
4. ALL MEASURED DISTANCES ARE GRID. COMBINED SCALE FACTOR: .99972498 CALCULATED FROM THE SW. CORNER OF SECTION 15, T1N, R66W.



WELL PAD - JDB 16-15HZ

JDB 15-8HZ
WELLBORE SPACING UNIT
523' FSL & 1072' FEL SESE (SURFACE)
LOCATED IN SECTION 15
355' FSL & 1492' FWL SESW (HEEL)
LOCATED IN SECTION 14
400' FSL & 1517' FWL SESW (BOTTOM)
LOCATED IN SECTION 11
T1N, R66W, 6TH P.M.
WELD COUNTY, COLORADO

**Kerr-McGee Oil &
Gas Onshore L.P.**
1099 18th Street
Denver, Colorado 80202



CONSULTING, LLC

SHERIDAN OFFICE
1095 Saberton Avenue
Sheridan, Wyoming 82801
Phone 307-674-0609

LOVELAND OFFICE
6706 North Franklin Avenue
Loveland, Colorado 80538
Phone 970-776-4331

DRAFTED BY:	LMO	CHECKED BY:	RKF
DATE DRAFTED:	7/30/18	DATE SURVEYED:	6/25/18
REVISED:		FILE NAME:	18-12