



10

## STAGE NO.

CEMENT DATA:

Spacer Type:

Ams \_\_\_\_\_ Sks Yield \_\_\_\_\_ ft<sup>3</sup>/sk Density \_\_\_\_\_ PPG

LEAD. Pump Time \_\_\_\_\_ hrs. Type "G"  
2%  $\text{CaCl}_2$  Excess \_\_\_\_\_

Ami \_\_\_\_\_ Sks Yield 1.14 ft<sup>3</sup>/sk Density 15.8 PPG

TAIL: Pump Time \_\_\_\_\_ hrs. Type \_\_\_\_\_

Am<sub>1</sub> \_\_\_\_\_ Sks Yield \_\_\_\_\_ ft<sup>3</sup>/sk Density \_\_\_\_\_ PPC \_\_\_\_\_

WATER Lead 4.96 gals/sk Tail \_\_\_\_\_ gals/sk Total \_\_\_\_\_ Bbls

Pump Trucks Used 1496

Bulk Equip 46055

Float Equip: Manufacturer \_\_\_\_\_

Shoe: Type \_\_\_\_\_ Depth \_\_\_\_\_

Float: Type \_\_\_\_\_ Depth \_\_\_\_\_

Centralizers: Quantity \_\_\_\_\_ Plugs Top \_\_\_\_\_ Btm. \_\_\_\_\_

Stage Collars \_\_\_\_\_

Special Equip \_\_\_\_\_

Disp. Fluid Type \_\_\_\_\_ Amt. 32 Bbls. Weight 9.6 PPG

Mud Type \_\_\_\_\_ Weight \_\_\_\_\_ PP

Date 7/20/87 District Roosevelt Ticket No. 349256  
 Company Austra-Tex Rig Exeter 29  
 Lease Federal Well No. 1  
 County Routt State CO  
 Location \_\_\_\_\_ Field WildCat

CASING DATA      PTA ☒      Squeeze ☐  
Surface ☐      Intermediate ☐      Production ☐      Liner ☐  
Size 4 1/2      Type 16.60      Weight \_\_\_\_\_      Collar \_\_\_\_\_

Casing Depths. Top \_\_\_\_\_ Bottom \_\_\_\_\_

Drill Pipe Size .0142 Weight \_\_\_\_\_ Collars \_\_\_\_\_

Open Hole Size \_\_\_\_\_ T.D. \_\_\_\_\_ ft P.B. to \_\_\_\_\_ ft

## CAPACITY FACTORS

Casing                      Bbls   Lin   ft                      Lin   ft   Bbl   \_\_\_\_\_

Open Holes: Bbls: Lin ft \_\_\_\_\_ Lin ft Bbl \_\_\_\_\_

Drill Pipe: Bbls Lin ft \_\_\_\_\_ Lin ft Bbl \_\_\_\_\_

Annulus: Bbls Lin ft \_\_\_\_\_ Lin ft Bbl \_\_\_\_\_

Bbls. Lin ft \_\_\_\_\_ Lin ft. Bbl \_\_\_\_\_

Perforations. From \_\_\_\_\_ ft. to \_\_\_\_\_ ft Amt \_\_\_\_\_

COMPANY REPRESENTATIVE Laddie Liveoak -

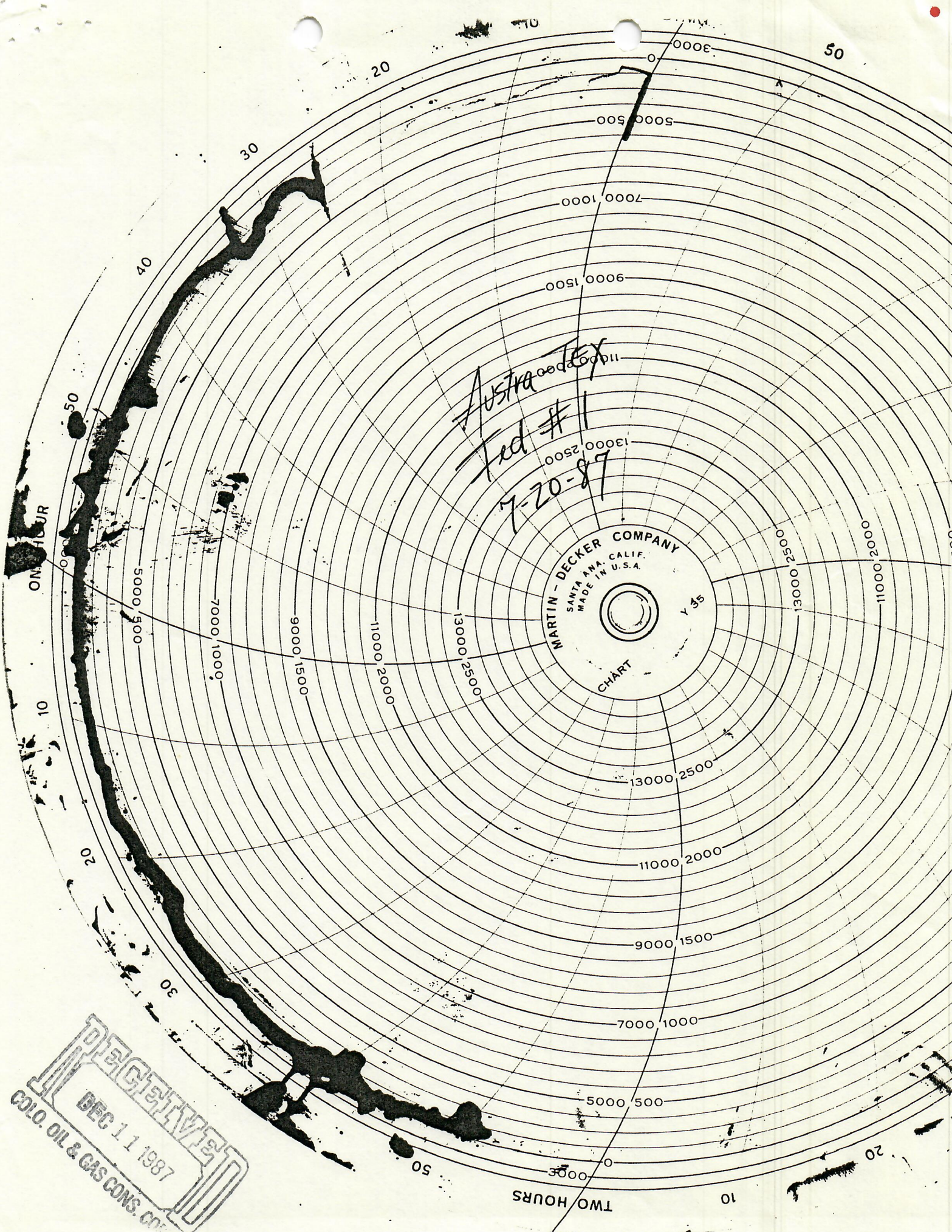
CEMENTER	Nolan Morrill
----------	---------------

[illegible]

RECEIVED  
DEC 11 1987  
COLO. OIL & GAS CONS. COMM.

FINAL DISP PRESS \_\_\_\_\_ PSI    BUMP PLUG TO \_\_\_\_\_ PSI    BLEEDBACK \_\_\_\_\_ BBLS.    THANK YOU





AustraTex  
Fed #1  
7-20-87

MARTIN-DECKER COMPANY  
SANTA ANA, CALIF.  
MADE IN U.S.A.  
CHART

REGISTERED  
DEC 11 1987  
COLO. OIL & GAS CONS. CO.