

T1N, R66W

MATCH LINE SEE SHEET 2

NW COR.
SEC. 15, T1N, R66W
FOUND 3 1/4" ALUM. CAP
L.S. NO. 30086

S 89°30'05" W
1325.98' (M)

W. 1/16 COR.
SEC. 10 & SEC. 15, T1N, R66W
FOUND 2 1/2" ALUM. CAP
P.L.S. NO. 24307

S 89°31'14" W
1325.95' (M)

N. 1/4 COR.
SEC. 15, T1N, R66W
FOUND 2 1/2" ALUM. CAP
P.L.S. NO. 24307

S 89°29'57" W
1326.12' (M)

E. 1/16 COR.
SEC. 10 & SEC. 15
T1N, R66W
SET 2 1/2" ALUM. CAP
P.L.S. NO. 38512

S 89°30'44" W
1325.94' (M)

NE COR.
SEC. 15, T1N, R66W
FOUND 2 1/2" ALUM. CAP
ILLEGIBLE

W. 1/4 COR.
SEC. 15, T1N, R66W
FOUND 2 1/2" ALUM. CAP
L.S. NO. 23501

S 89°34'04" W
1322.25' (M)

CW. 1/16 COR.
SEC. 15, T1N, R66W
FOUND 2 1/2" ALUM. CAP
P.L.S. NO. 24307

S 89°33'36" W
1322.24' (M)

CENTER 1/4 COR.
SEC. 15, T1N, R66W
FOUND 3 1/4" ALUM. CAP
L.S. NO. 38026

S 89°34'03" W
2652.17' (M)

E. 1/4 COR.
SEC. 15, T1N, R66W
FOUND 2 1/2" ALUM. CAP
L.S. NO. 19585

SW COR.
SEC. 15, T1N, R66W
FOUND 2 1/2" ALUM. CAP
L.S. NO. 23501

S 89°36'19" W
1318.56' (M)

W. 1/16 COR.
SEC. 15 & SEC. 22
T1N, R66W
SET 2 1/2" ALUM. CAP
P.L.S. NO. 38512

S. 1/4 COR.
SEC. 15, T1N, R66W
FOUND 2" ALUM. CAP
ILLEGIBLE

S 89°36'22" W
1318.35' (M)

S 89°36'34" W
2636.91' (M)

SE COR.
SEC. 15, T1N, R66W
FOUND 2 1/2" ALUM. CAP
L.S. NO. 30120

15

MAB 15-6HZ
SURFACE LOCATION

HEEL LOCATION

1041'

2171'

770'

563'

N 00°27'48" W 2649.81' (M)

N 00°27'58" W 2649.70' (M)

N 00°18'09" W 2652.27' (M)

N 00°18'08" W 2651.63' (M)

N 00°18'18" W 2655.13' (M)

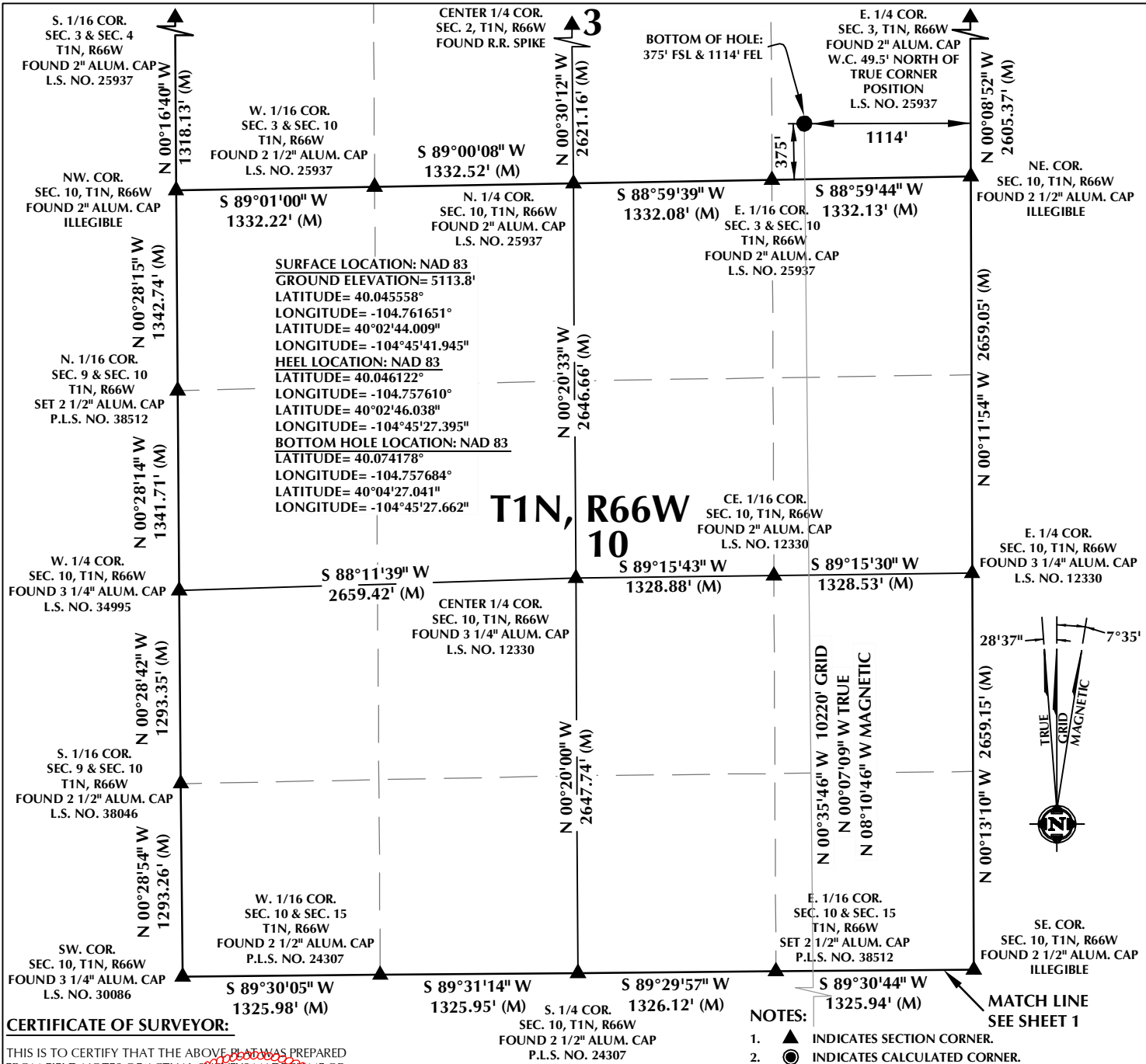
N 00°01'38" E 2653.64' (M)

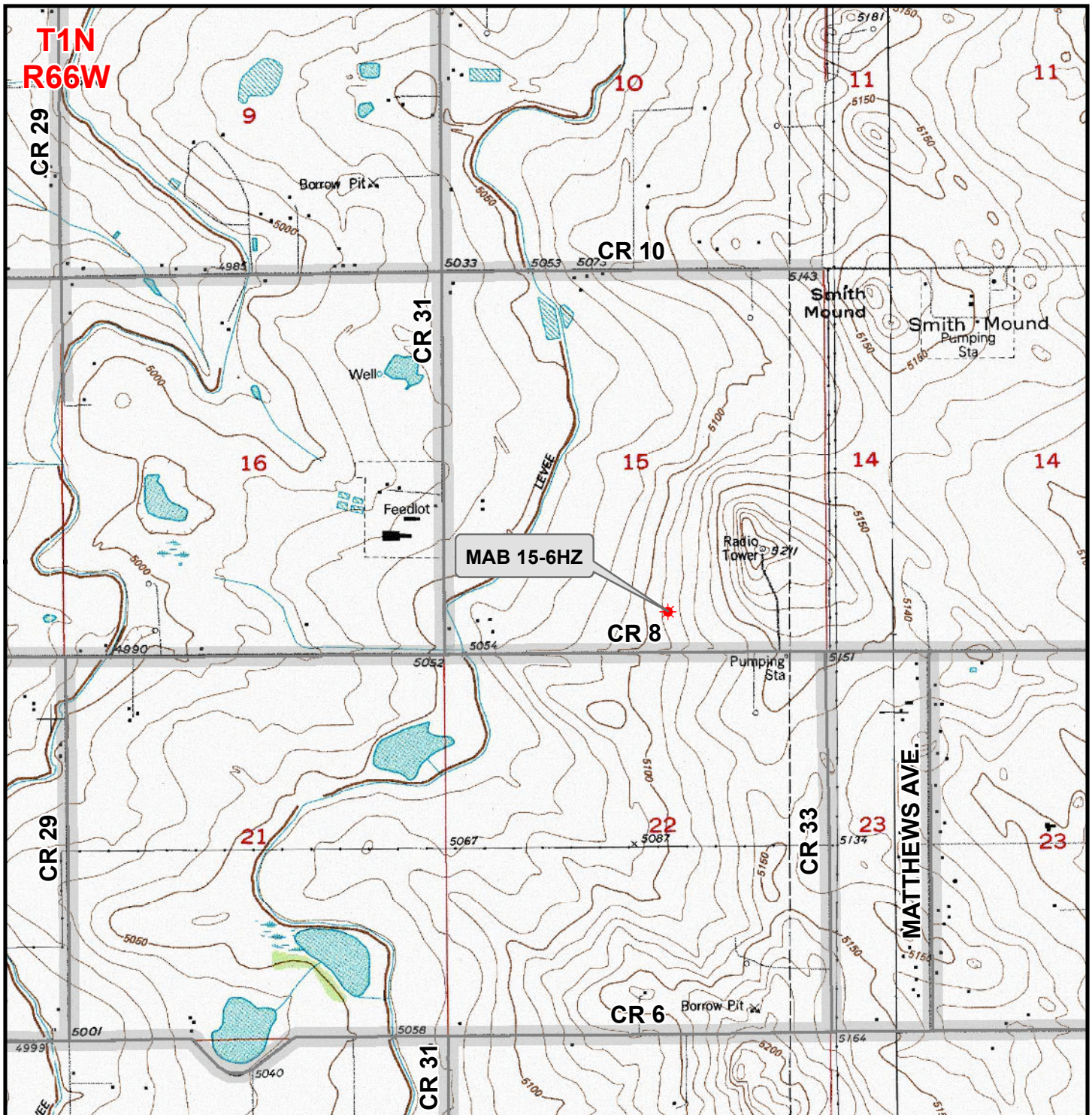
WELLBORE CONTINUES INTO SECTION 10 T1N, R66W

TRUE GRID MAGNETIC

7°35'

28'37"





Legend

- ★ Well - Proposed
 Road - Primitive - Existing
 Road - County - Existing
 Road - Improved - Existing
 Road - Highway - Existing

WELL PAD - MAB 15-15HZ
GENERAL LOCATION MAP
MAB 15-6HZ
LOCATED IN SECTION 15
T1N, R66W, 6th P.M.
WELD COUNTY, COLORADO

**Kerr-McGee Oil &
Gas Onshore L.P.**

1099 18th Street
 Denver, Colorado 80202



CONSULTING, LLC

SHERIDAN OFFICE
 1095 Saberton Avenue
 Sheridan, Wyoming 82801
 Phone 307-674-0609

LOVELAND OFFICE
 1635 Foxtail Drive, Suite 204
 Loveland, Colorado 80538
 Phone 970-776-4331



SCALE: 1" = 2,000ft

NAD83 CO-Nft

DRAWN: DP

DATE: 24 Jul 2018

REVISED:

DATE: