

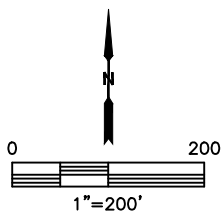
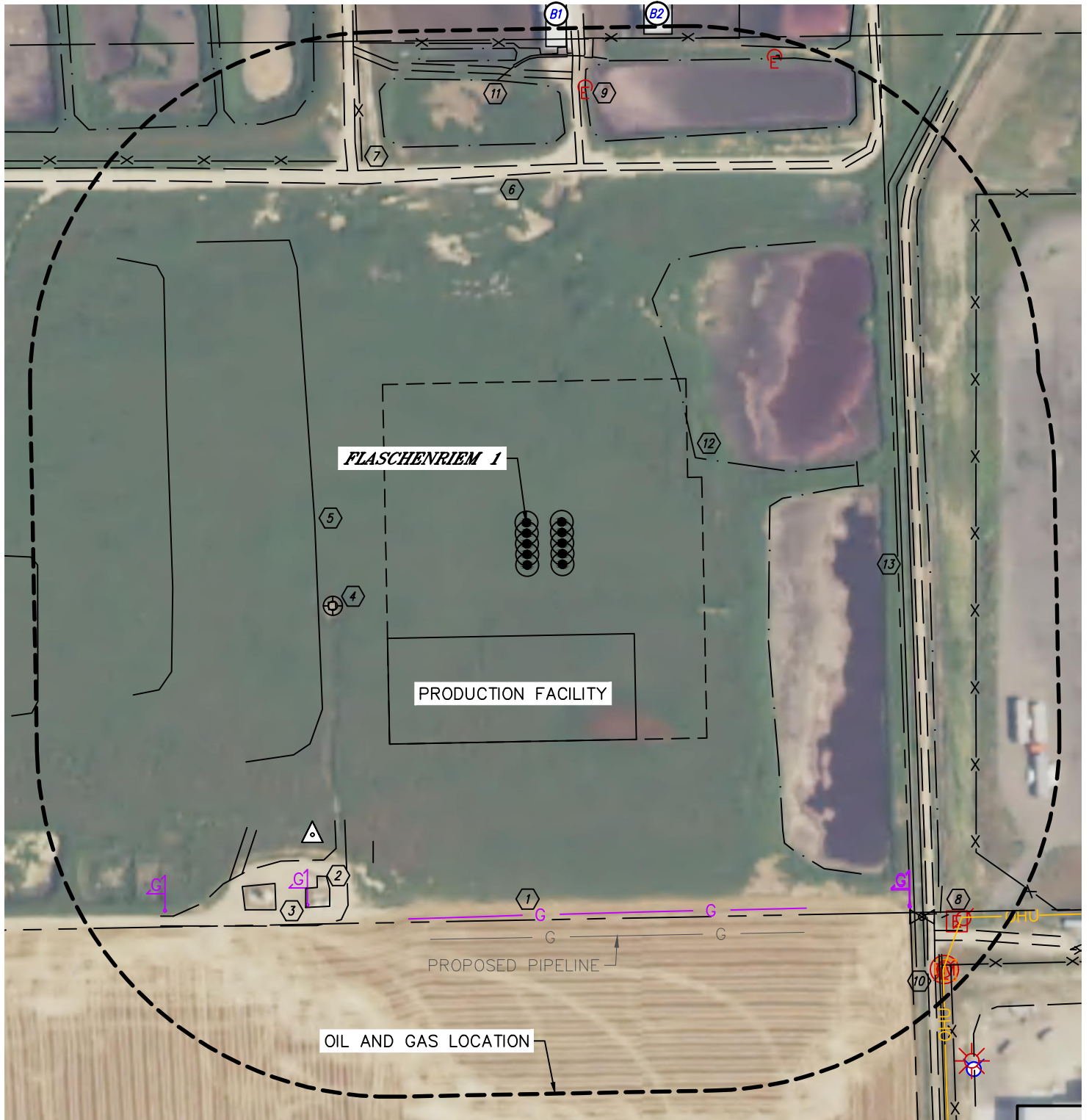


Lat40°, Inc. 6250 W. 10th Street, Unit 2, Greeley, CO 970-515-5294

LOCATION DRAWING

FLASCHENRIEM PAD 3-4N-68W

SECTION: 3
TOWNSHIP: 4N
RANGE: 68W
6TH. P.M.
WELD COUNTY, CO





Lat40°, Inc. 6250 W. 10th Street, Unit 2, Greeley, CO 970-515-5294

LOCATION DRAWING

FLASCHENRIEM PAD 3-4N-68W

SECTION: 3
TOWNSHIP: 4N
RANGE: 68W
6TH. P.M.
WELD COUNTY, CO

IMPROVEMENTS:

(MEASURED FROM THE PROPOSED FLASCHENRIEM 1 WELL LOCATION)

- ① NO BUILDING UNITS WITHIN 500' IMPROVEMENT BUFFER
- ② BUILDING B1 ±675' N (ANIMAL SHELTER), B2 ±712' NE (ANIMAL SHELTER)
- ③ GAS LINE (DCP) 556' S
- ④ PRODUCTION EQUIPMENT (EXTRACTION) 576', 623' SW
- ⑤ GAS LINE MARKER (KERR MCGEE) 624', 752' SW, 768' SE (DCP)
- ⑥ OIL & GAS WELL 299' SW
- ⑦ SILAGE STOCK PILES 300', 504' 696' W
- ⑧ ACCESS ROAD 494' N, 494' SW, 547' E
- ⑨ FENCE 564', 579' NW, 664' N, 692' NE, 638' E, 860' SE
- ⑩ OVERHEAD UTILITY 833' SE
- ⑪ ELECTRIC SERVICE EQUIPMENT 623', 749' NE, 832', 866' SE
- ⑫ TELEPHONE PEDESTAL 869' SE
- ⑬ PIPE 474', 605', 665' NE, 501' SW, 629' N, 783', 789', 813' SE
- ⑭ PONDS / LAGOONS 257', 553', 742' NE, 345' E, 665', 722' NW
- ⑮ DITCH 530', 569' E, 646' N, 847' SE