



Lat40°, Inc. 6250 W. 10th Street, Unit 2, Greeley, CO 970-515-5294

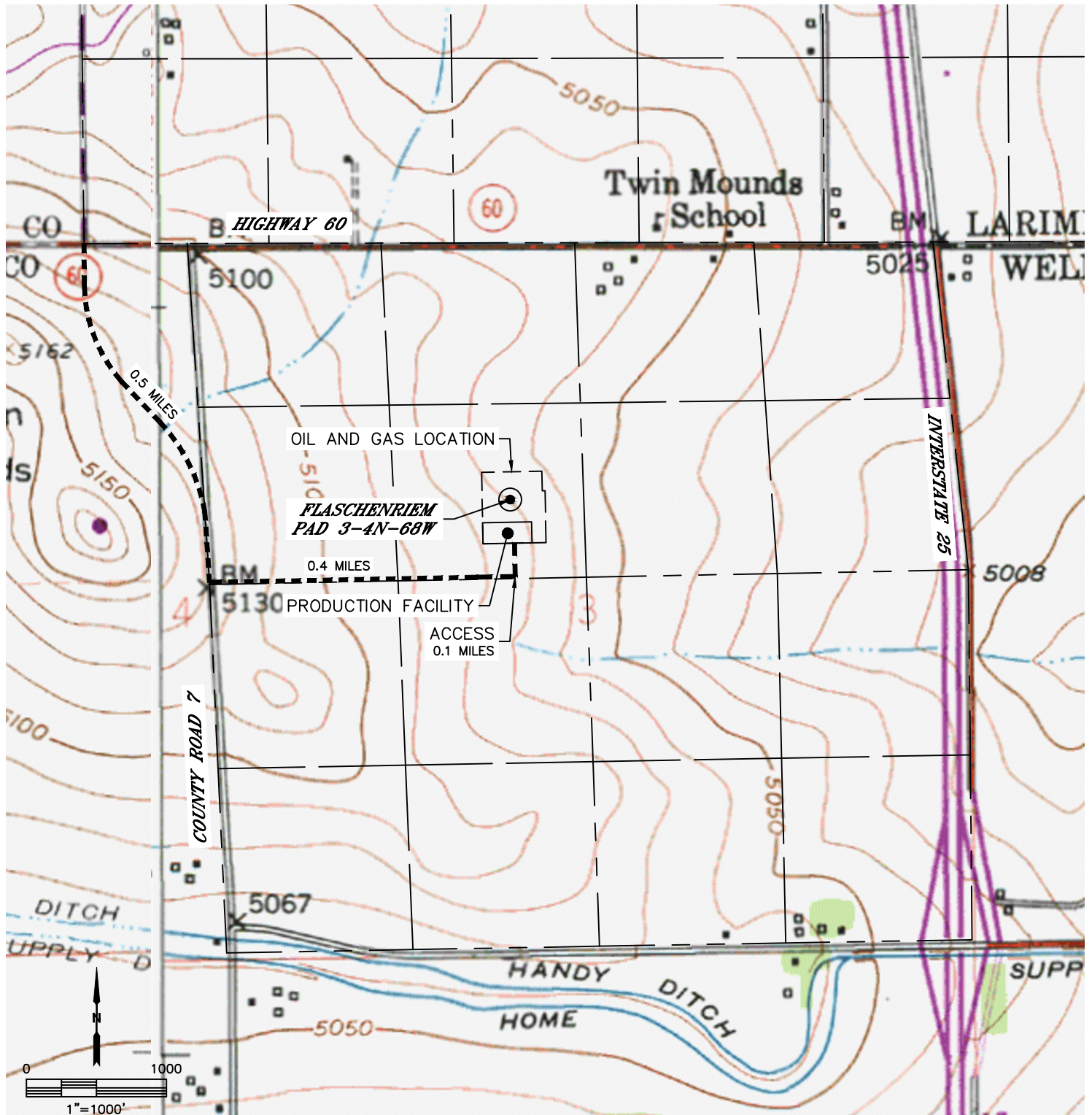
# ACCESS ROAD MAP

FLASCHENRIEM PAD 3-4N-68W

SECTION: 3  
TOWNSHIP: 4N  
RANGE: 68W  
6TH. P.M.  
WELD COUNTY, CO

### DRIVING DIRECTIONS TO FLASCHENRIEM PAD 3-4N-68W

FROM THE INTERSECTION OF HIGHWAY 60 AND COUNTY ROAD 7; THENCE SOUTH ALONG COUNTY ROAD 7 FOR 0.5 MILES TO AN EXISTING ACCESS TO THE EAST; THENCE EAST ALONG EXISTING ACCESS FOR 0.4 MILES; THENCE EAST AND NORTH ALONG A PROPOSED ACCESS ROAD FOR 0.1 MILES TO THE PROPOSED LOCATION.





Lat40°, Inc. 6250 W. 10th Street, Unit 2, Greeley, CO 970-515-5294

# ACCESS ROAD MAP

FLASCHENRIEM PAD 3-4N-68W

SECTION: 3  
TOWNSHIP: 4N  
RANGE: 68W  
6TH. P.M.  
WELD COUNTY, CO

