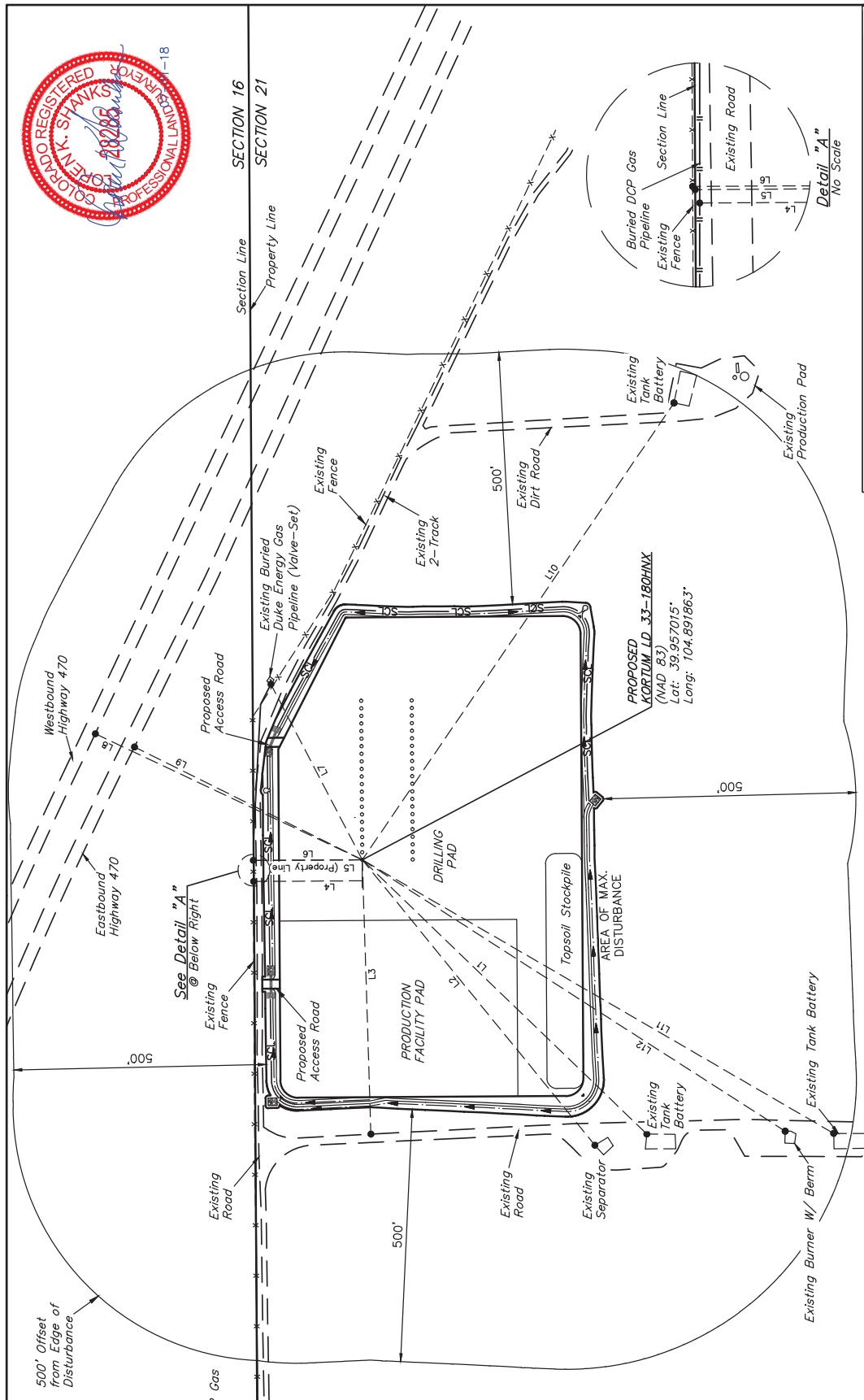


LINE TABLE		
LINE	DIRECTION	LENGTH
L1	S44°W	782'
L2	S51°W	729'
L3	S88°W	543'
L4	NORTH	215'
L5	NORTH	215'
L6	NORTH	216'
L7	N62°E	392'
L8	N25°E	585'
L9	N28°E	504'
L10	S56°E	1095'
L11	S30°W	1079'
L12	S33°W	995'



REV: 6 07-10-18 T.L.L. (ADD STORM WATER, SHL, PAD & EQUIPMENT CHANGES)

**GREAT WESTERN OPERATING COMPANY**  
 KORTUM LD PAD  
 NW 1/4 NE 1/4 SECTION 21, T1S, R67W, 6th P.M.  
 ADAMS COUNTY, COLORADO

SURVEYED BY JARED CHRISTOPHER, G.W. 11-21-16 SCALE  
 DRAWN BY J.W. 04-02-14 1" = 200'

UELS, LLC  
 Corporate Office • 85 South 200 East  
 Vernal, UT 84078 • (435) 789-1017



**LOCATION DRAWING** **FIGURE #4**