



Cement
Bond
Log

Company Austin Exploration Company

Well Bird 13-18

Field Wildcat

County Fremont

State Colorado

Location:

1767' FSL & 638' FWL

API # : 05 043 06230

Other Services

SEC 18 TWP 20S RGE 69W

Permanent Datum Ground Level Elevation 6070'

Log Measured From Ground Level

Drilling Measured From KB 5' AGL

Elevation

K.B. 6075'

D.F.

G.L. 6070'

Date 9-1-17

Run Number One

Depth Driller 820'

Depth Logger 720'

Bottom Logged Interval 717'

Top Log Interval Surface

Open Hole Size 1111'

Type Fluid Water

Density / Viscosity 1111'

Max. Recorded Temp. 1111'

Estimated Cement Top Surface

Time Well Ready R.O.A

Time Logger on Bottom 12:00 p.m

Equipment Number T-968

Location Hays, KS

Recorded By C. Patterson

Witnessed By Mr. Tim Hart

Borehole Record

Run Number

Bit

From

To

Size

Weight

From

To

Tubing Record

Run Number

Bit

From

To

Size

Weight

From

To

Size

Weight

From

To

Wd/Ft

Top

Bottom

Casing Record

Surface String

Prot. String

Production String

Liner

<<< Fold Here >>>

All interpretations are opinions based on inferences from electrical or other measurements and we cannot and do not guarantee the accuracy or correctness of any interpretation, and we shall not, except in the case of gross or willful negligence on our part, be liable or responsible for any loss, costs, damages, or expenses incurred or sustained by anyone resulting from any interpretation made by any of our officers, agents or employees. These interpretations are also subject to our general terms and conditions set out in our current Price Schedule.

Comments

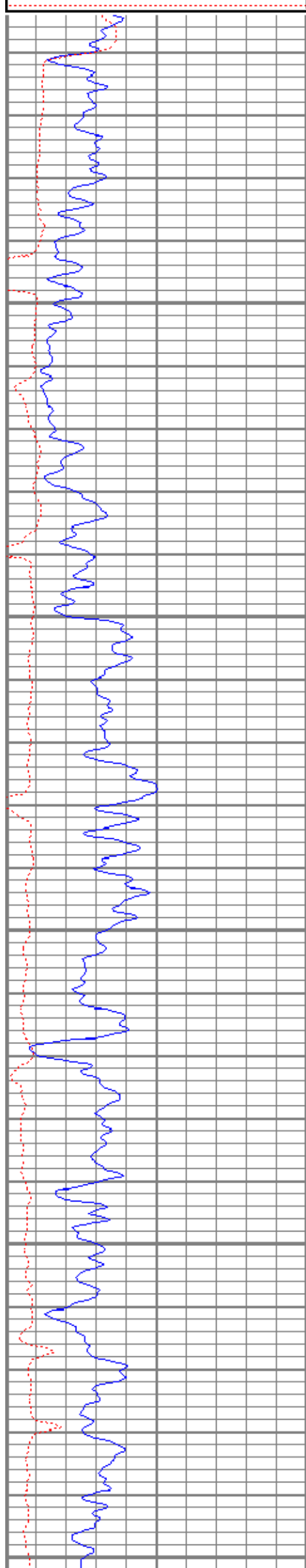
(Could NOT get to bottom Pushing Something down...)
(Pushed from 700' to 720'... would not go any Further)



MAIN PASS

Database File aebird13-18cblsurface.db
Dataset Pathname pass2.1
Presentation Format cbl
Dataset Creation Fri Sep 01 13:21:27 2017
Charted by Depth in Feet scaled 1:240

0	GR (GAPI)	150	0	AMP3FT (mV)	100	200	VDL	1200
150	GR (GAPI)	300	18	CCL	-2			
400	TT3FT (usec)	200						



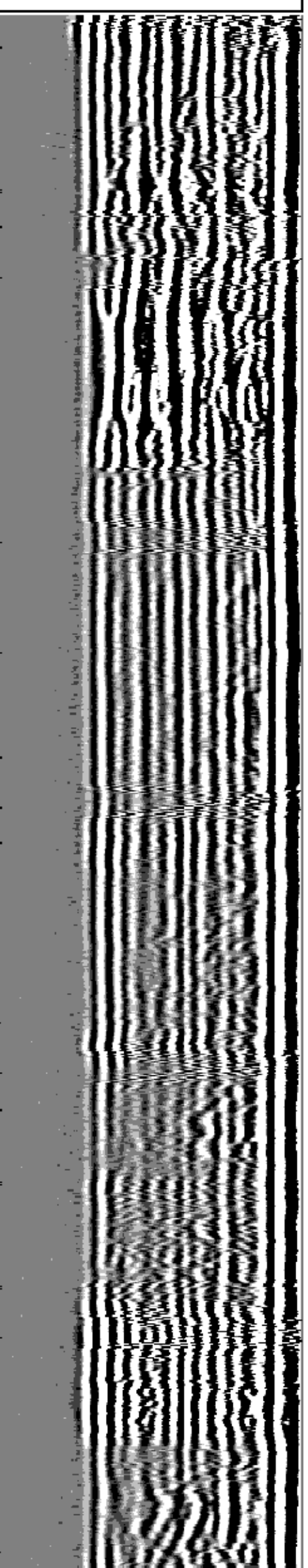
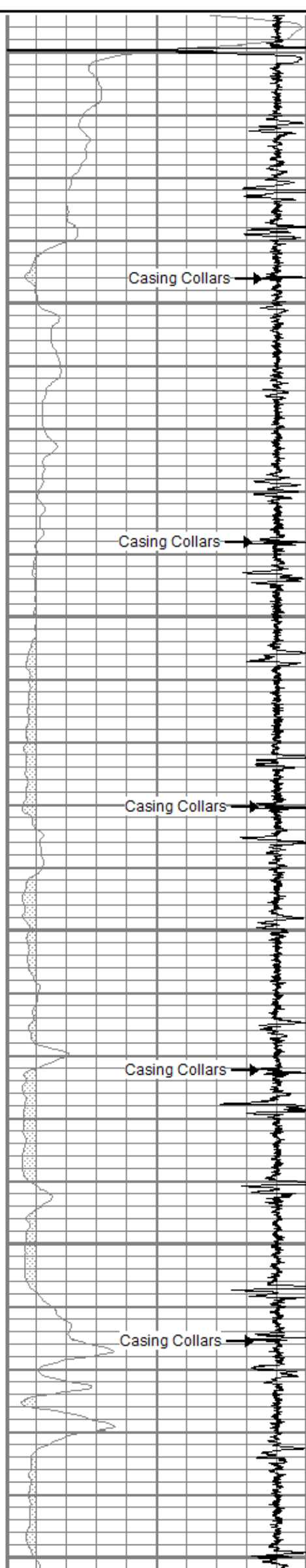
50

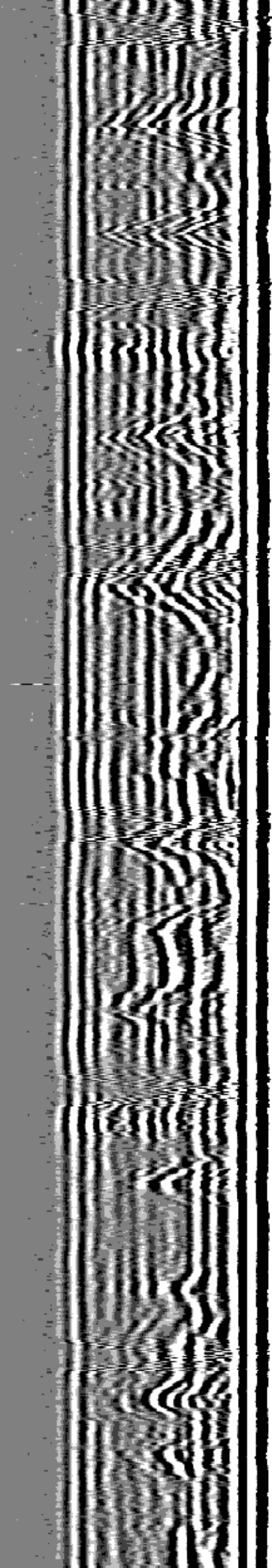
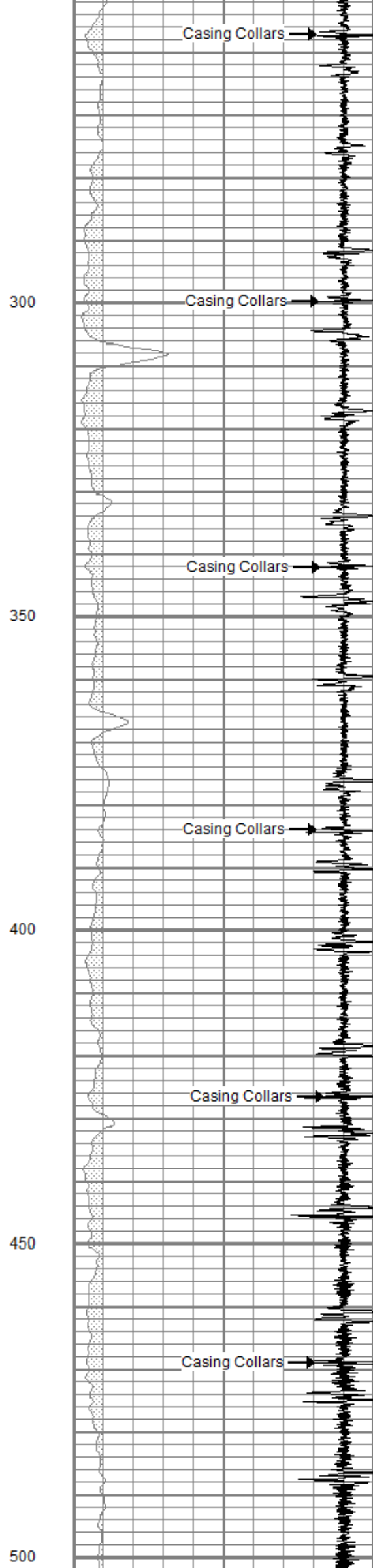
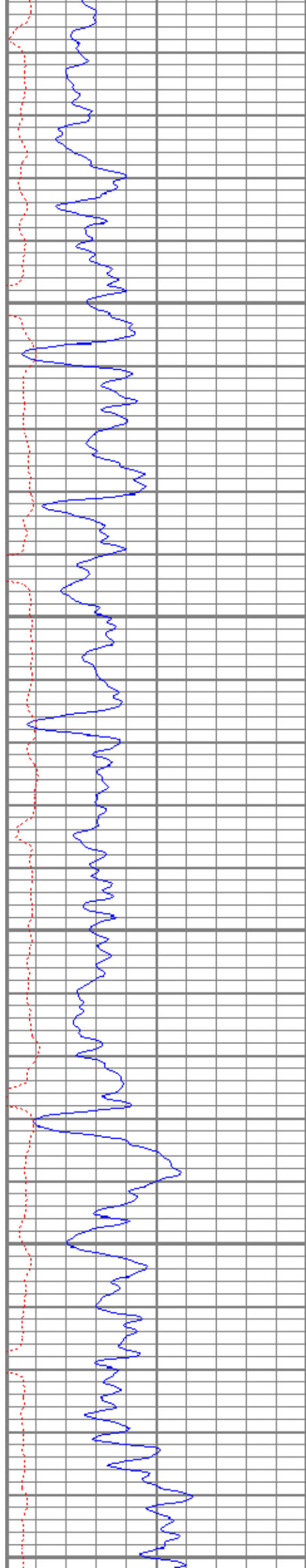
100

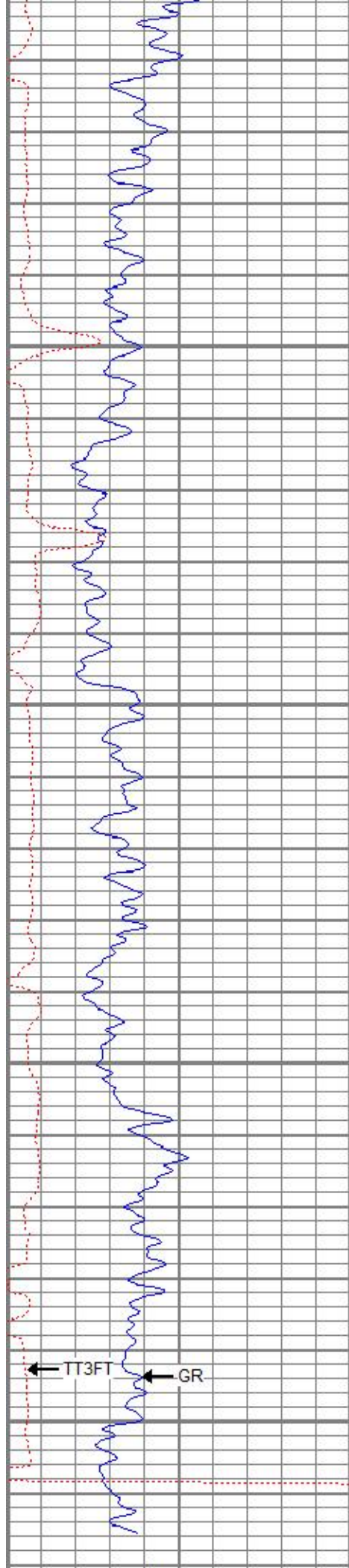
150

200

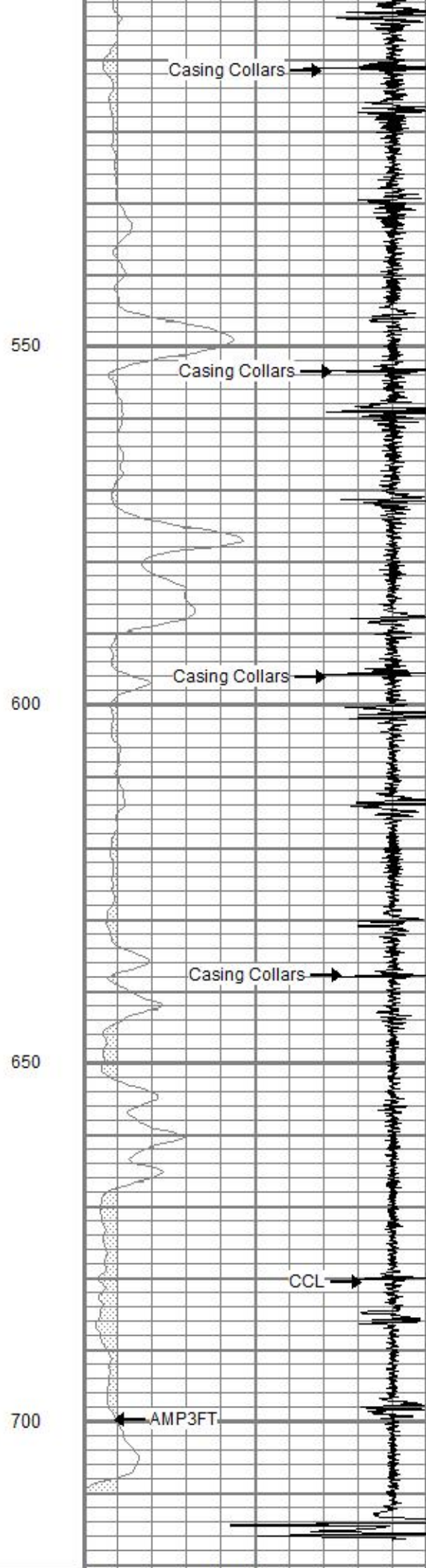
250



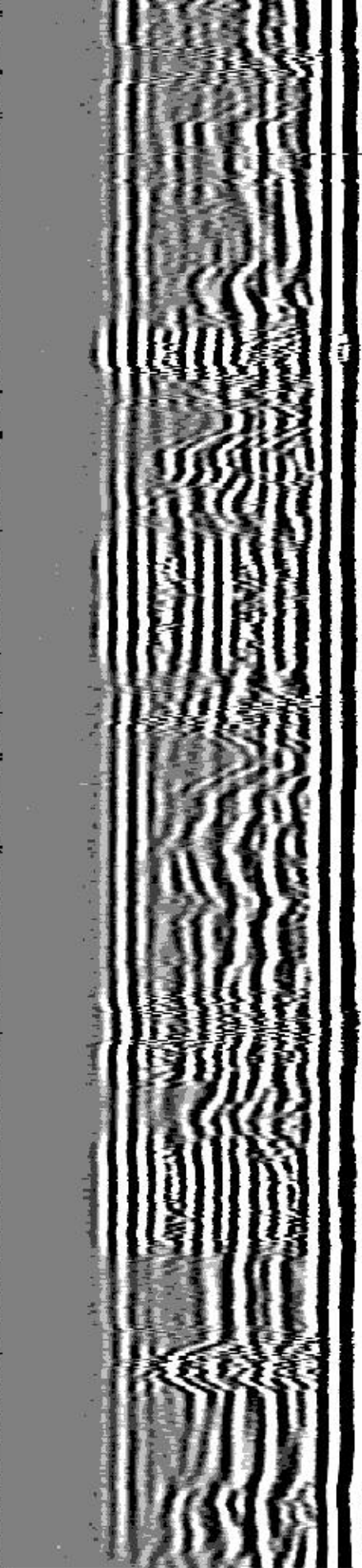




0	GR (GAPI)	150
150	GR (GAPI)	300
400	TT3FT (usec)	200



0	AMP3FT (mV)	100
18	CCL	-2



200	VDL	1200
-----	-----	------



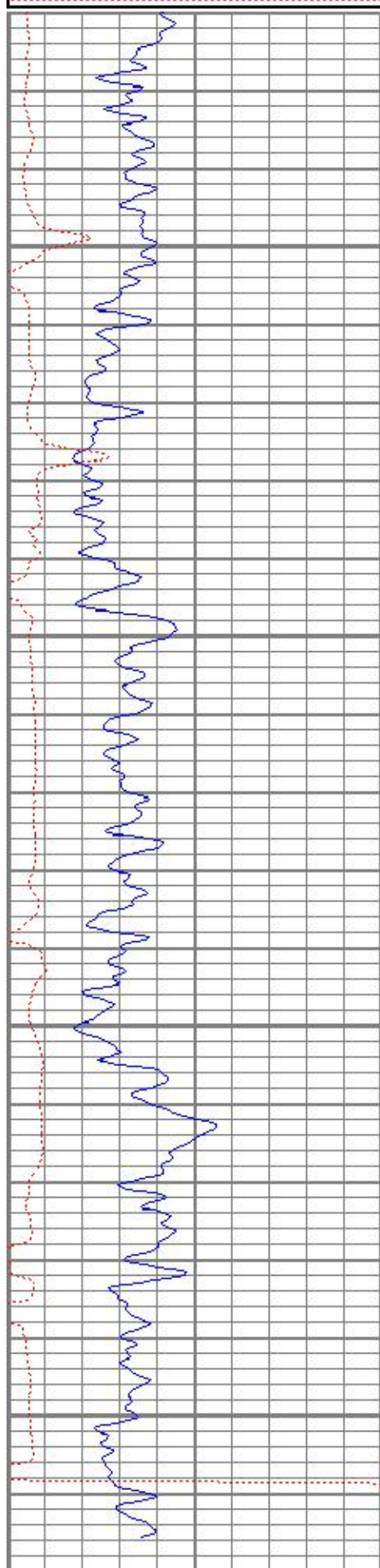
REPEAT SECTION

Database File aebird13-18cblsurface.db
Dataset Pathname pass1.1
Presentation Format cbl
Dataset Creation Fri Sep 01 13:22:50 2017
Charted by Depth in Feet scaled 1:240

0	GR (GAPI)	150
150	GR (GAPI)	300
400	TT3FT (usec)	200

18	CCL	-2
0	AMP3FT (mV)	100

200 VDL 1200

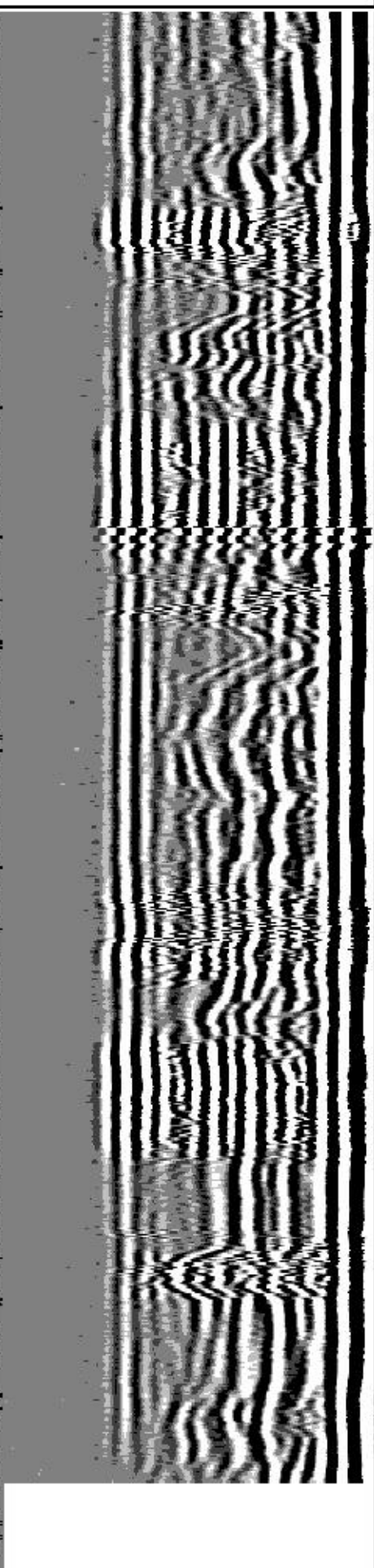
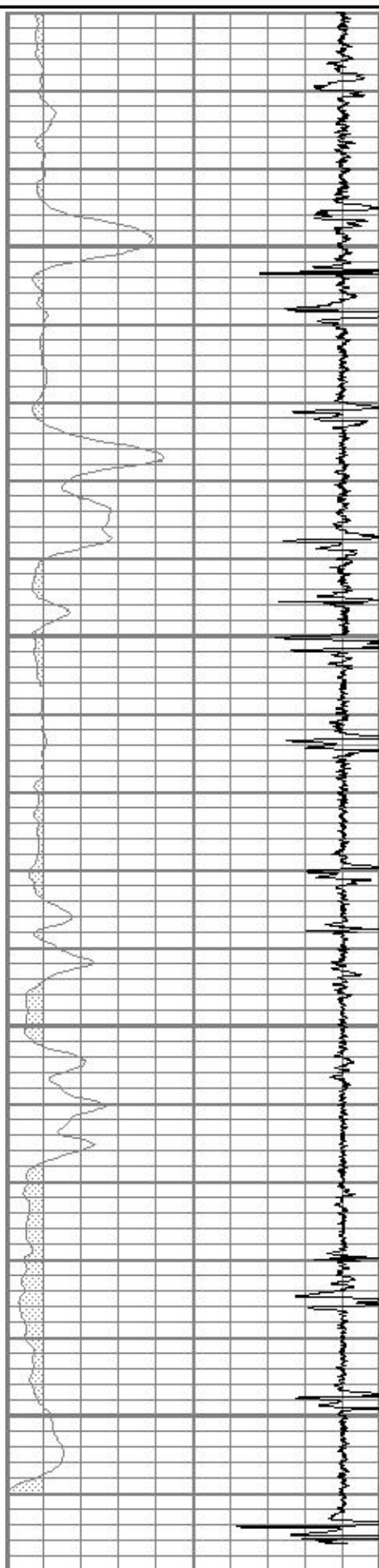


550

600

650

700



0	GR (GAPI)	150
150	GR (GAPI)	300

18	CCL	-2
0	AMP3FT (mV)	100

200 VDL 1200

Calibration Report						
Database File	aebird13-18cblsurface.db					
Dataset Pathname	pass2.1					
Dataset Creation	Fri Sep 01 13:21:27 2017					
Gamma Ray Calibration Report						
Serial Number:	080224					
Tool Model:	Probe1					
Performed:	Fri Oct 17 13:10:43 2014					
Calibrator Value:	200.0	GAPI				
Background Reading:	15.0	cps				
Calibrator Reading:	222.7	cps				
Sensitivity:	0.9629	GAPI/cps				
Segmented Cement Bond Log Calibration Report						
Serial Number:	061007					
Tool Model:	DigitalCBL					
Calibration Casing Diameter:	5.500	in				
Calibration Depth:	2606.992	ft				
Master Calibration, performed Fri Sep 01 12:41:41 2017:						
	Raw (v)		Calibrated (mv)		Results	
	Zero	Cal	Zero	Cal	Gain	Offset
3'	0.007	1.000	1.000	71.921	71.390	0.531
CAL						
5'	0.006	1.162	1.000	71.921	61.355	0.608
SUM						
S1						
S2						
S3						
S4						
S5						
S6						
S7						
S8						
Internal Reference Calibration, performed (Not Performed):						
	Raw (v)		Calibrated (v)		Results	
	Zero	Cal	Zero	Cal	Gain	Offset
CAL						
Air Zero Calibration, performed Fri Jul 31 16:28:09 2015:						
	Raw (v)		Calibrated (v)		Results	
	Zero		Zero		Offset	
3'	0.000		0.000		0.000	
5'	0.000		0.000		0.000	
SUM						
S1						
S2						
S3						
S4						
S5						
S6						
S7						
S8						

Sensor	Offset (ft)	Schematic	Description	Length (ft)	O.D. (in)	Weight (lb)
		