

# **Crestone Peak Resources**

**DJ BASIN**

**S18-T2N-R67W (KUGEL)**

**KUGEL 1I-18H-H267**

**OH**

**PLAN #3 (6.11)**

## **Anticollision Summary Report**

**11 June, 2018**

# Cathedral Energy Services

## Anticollision Summary Report

<b>Company:</b>	Crestone Peak Resources	<b>Local Co-ordinate Reference:</b>	Well KUGEL 11-18H-H267 - Slot KUGEL 11
<b>Project:</b>	DJ BASIN	<b>TVD Reference:</b>	23' KB @ 4976.00usft
<b>Reference Site:</b>	S18-T2N-R67W (KUGEL)	<b>MD Reference:</b>	23' KB @ 4976.00usft
<b>Site Error:</b>	0.00 usft	<b>North Reference:</b>	True
<b>Reference Well:</b>	KUGEL 11-18H-H267	<b>Survey Calculation Method:</b>	Minimum Curvature
<b>Well Error:</b>	0.00 usft	<b>Output errors are at</b>	2.00 sigma
<b>Reference Wellbore</b>	OH	<b>Database:</b>	USA EDM 5000 Multi Users DB
<b>Reference Design:</b>	PLAN #3 (6.11)	<b>Offset TVD Reference:</b>	Offset Datum

<b>Reference</b>	PLAN #3 (6.11)		
<b>Filter type:</b>	NO GLOBAL FILTER: Using user defined selection & filtering criteria		
<b>Interpolation Method:</b>	MD Interval 100.00usft	<b>Error Model:</b>	ISCWSA
<b>Depth Range:</b>	Unlimited	<b>Scan Method:</b>	Closest Approach 3D
<b>Results Limited by:</b>	Maximum ellipse separation of 1,000.00 usft	<b>Error Surface:</b>	Pedal Curve
<b>Warning Levels Evaluated at:</b>	2.00 Sigma	<b>Casing Method:</b>	Not applied

<b>Survey Tool Program</b>	<b>Date</b>	6/11/2018		
<b>From (usft)</b>	<b>To (usft)</b>	<b>Survey (Wellbore)</b>	<b>Tool Name</b>	<b>Description</b>
0.00	2,000.00	PLAN #3 (6.11) (OH)	VESSI_GYROFLEX	VESSI Gyroflex Gyro
2,001.00	15,456.99	PLAN #3 (6.11) (OH)	MWD+HDGM	OWSG MWD + HDGM

Summary						
Site Name	Reference Measured Depth (usft)	Offset Measured Depth (usft)	Distance Between Centres (usft)	Distance Between Ellipses (usft)	Separation Factor	Warning
Offset Well - Wellbore - Design						
S18-T2N-R67W (KUGEL)						
BRETT 1 - HS RESOURCES - NO SURVEYS	5,156.22	5,037.00	659.43	629.71	22.192	CC, ES, SF
BRETT 2 - HS RESOURCES WELL - NO SURVEYS	5,369.85	5,035.00	2,383.95	2,353.38	77.983	CC, ES
BRETT 2 - HS RESOURCES WELL - NO SURVEYS	5,700.00	5,035.00	2,406.71	2,375.43	76.937	SF
BRETT 3 - KMG WELL - NO SURVEY	5,307.15	5,040.00	2,107.95	2,077.49	69.220	CC, ES
BRETT 3 - KMG WELL - NO SURVEY	5,500.00	5,040.00	2,116.75	2,085.86	68.521	SF
BRETT 4 - KMG WELL - GYRO	7,006.04	7,002.71	1,284.80	1,253.06	40.484	CC, ES
BRETT 4 - KMG WELL - GYRO	7,200.00	7,221.93	1,291.93	1,259.62	39.982	SF
DREW 1 - KMG WELL - GYRO	6,902.91	6,828.93	2,962.76	2,931.46	94.669	CC, ES
DREW 1 - KMG WELL - GYRO	7,500.00	7,347.30	3,042.86	3,009.71	91.792	SF
DREW GAS UNIT-TRUE 1 - KMG WELL - GYRO	6,844.74	6,817.67	1,337.27	1,307.45	44.844	CC, ES
DREW GAS UNIT-TRUE 1 - KMG WELL - GYRO	7,000.00	6,975.24	1,352.07	1,321.56	44.308	SF
FARNSWORTH 9-18A - KMG WELL - GYRO	6,800.00	6,734.86	387.33	356.15	12.424	CC, ES
FARNSWORTH 9-18A - KMG WELL - GYRO	6,900.00	6,835.10	392.01	360.37	12.391	SF
GTF RED V 6-16J1 - KMG WELL - GYRO	15,456.99	7,395.31	541.26	461.48	6.784	CC, ES, SF
GTF RED V 6-4D - KMG WELL - GYRO	15,456.99	7,392.81	1,371.74	1,264.92	12.841	CC, ES, SF
GTF RED V6-16 - KMG WELL - GYRO	15,456.99	7,391.88	531.25	474.79	9.410	CC, ES, SF
HSR-OWEN 15-18A - KMG WELL - SURVEYS	3,603.69	3,446.00	1,448.74	1,435.62	110.362	CC, ES
HSR-OWEN 15-18A - KMG WELL - SURVEYS	7,000.00	7,080.38	2,219.93	2,181.63	57.965	SF
KUGEL 1 - EXTRACTION WELL - GYRO	9,038.09	7,484.56	197.76	152.64	4.383	CC, ES, SF
KUGEL 1-18 - CPR WELL - GYRO	8,815.79	7,500.00	2,993.58	2,951.77	71.608	CC, ES
KUGEL 1-18 - CPR WELL - GYRO	10,300.00	7,500.00	3,341.32	3,284.14	58.445	SF
KUGEL 12-18 - KMG WELL - GYRO	8,053.53	7,456.56	2,491.59	2,455.66	69.358	CC, ES
KUGEL 12-18 - KMG WELL - GYRO	9,300.00	7,423.47	2,785.78	2,739.72	60.483	SF
KUGEL 1A-18H-H267 - OH - PLAN #3 (6.11)	614.03	616.49	74.04	72.08	37.691	CC, ES
KUGEL 1A-18H-H267 - OH - PLAN #3 (6.11)	15,456.99	15,610.00	1,761.82	1,509.67	6.987	SF
KUGEL 1B-18H-H267 - OH - PLAN #3 (6.11)	693.92	696.18	64.40	62.16	28.711	CC
KUGEL 1B-18H-H267 - OH - PLAN #3 (6.11)	700.00	702.20	64.41	62.15	28.441	ES
KUGEL 1B-18H-H267 - OH - PLAN #3 (6.11)	15,456.99	15,500.00	1,642.76	1,390.32	6.508	SF
KUGEL 1C-18H-H267 - OH - PLAN #2 (6.11)	781.23	783.37	54.24	51.69	21.273	CC
KUGEL 1C-18H-H267 - OH - PLAN #2 (6.11)	800.00	801.96	54.30	51.68	20.761	ES
KUGEL 1C-18H-H267 - OH - PLAN #2 (6.11)	15,456.99	15,415.44	1,474.98	1,223.08	5.855	SF
KUGEL 1D-18H-H267 - OH - PLAN #2 (6.11)	887.79	889.99	42.37	39.45	14.501	CC
KUGEL 1D-18H-H267 - OH - PLAN #2 (6.11)	900.00	902.08	42.41	39.44	14.306	ES
KUGEL 1D-18H-H267 - OH - PLAN #2 (6.11)	15,456.99	15,481.80	1,060.27	807.86	4.201	SF
KUGEL 1E-18H-H267 - OH - PLAN #2 (6.11)	964.10	965.09	32.54	29.35	10.211	CC, ES
KUGEL 1E-18H-H267 - OH - PLAN #2 (6.11)	15,456.99	15,540.37	879.50	625.63	3.464	SF

CC - Min centre to center distance or convergent point, SF - min separation factor, ES - min ellipse separation

# Cathedral Energy Services

## Anticollision Summary Report

<b>Company:</b>	Crestone Peak Resources	<b>Local Co-ordinate Reference:</b>	Well KUGEL 11-18H-H267 - Slot KUGEL 11
<b>Project:</b>	DJ BASIN	<b>TVD Reference:</b>	23' KB @ 4976.00usft
<b>Reference Site:</b>	S18-T2N-R67W (KUGEL)	<b>MD Reference:</b>	23' KB @ 4976.00usft
<b>Site Error:</b>	0.00 usft	<b>North Reference:</b>	True
<b>Reference Well:</b>	KUGEL 11-18H-H267	<b>Survey Calculation Method:</b>	Minimum Curvature
<b>Well Error:</b>	0.00 usft	<b>Output errors are at</b>	2.00 sigma
<b>Reference Wellbore</b>	OH	<b>Database:</b>	USA EDM 5000 Multi Users DB
<b>Reference Design:</b>	PLAN #3 (6.11)	<b>Offset TVD Reference:</b>	Offset Datum

Summary						
Site Name	Reference Measured Depth (usft)	Offset Measured Depth (usft)	Distance Between Centres (usft)	Distance Between Ellipses (usft)	Separation Factor	Warning
S18-T2N-R67W (KUGEL)						
KUGEL 1F-18H-H267 - OH - PLAN #2 (6.11)	544.43	545.25	20.08	18.37	11.785	CC, ES
KUGEL 1F-18H-H267 - OH - PLAN #2 (6.11)	15,456.99	15,303.74	829.00	580.40	3.335	SF
KUGEL 1G-18H-H267 - OH - PLAN #2 (6.11)	1,101.33	1,102.08	12.44	8.79	3.402	CC, ES
KUGEL 1G-18H-H267 - OH - PLAN #2 (6.11)	15,456.99	15,346.21	378.43	138.55	1.578	SF
KUGEL 1H-18H-H267 - OH - PLAN #3 (6.11)	426.56	426.80	4.39	3.11	3.430	CC, ES
KUGEL 1H-18H-H267 - OH - PLAN #3 (6.11)	15,456.99	15,215.43	257.40	86.76	1.508	SF
KUGEL 1J-18H-H267 - OH - PLAN #2 (6.11)	200.00	197.00	10.00	9.51	20.505	CC, ES
KUGEL 1J-18H-H267 - OH - PLAN #2 (6.11)	14,900.00	14,753.62	231.76	32.47	1.163	Level 2, SF
KUGEL 1K-18H-H267 - OH - PLAN #2 (6.11)	300.00	297.00	20.00	19.16	23.707	CC, ES
KUGEL 1K-18H-H267 - OH - PLAN #2 (6.11)	15,456.99	15,227.75	563.25	322.52	2.340	SF
KUGEL 1L-18H-H267 - OH - PLAN #2 (6.11)	714.46	711.88	5.08	2.80	2.223	CC, ES, SF
KUGEL 1M-18H-H267 - OH - PLAN #2 (6.11)	727.65	724.82	7.62	5.28	3.258	CC, ES, SF
KUGEL 1N-18H-H267 - OH - PLAN #2 (6.11)	678.95	676.92	12.81	10.64	5.881	CC, ES, SF
KUGEL 21-18 - CPR WELL - GYRO	9,558.50	7,477.57	2,535.00	2,483.35	49.087	CC
KUGEL 21-18 - CPR WELL - GYRO	9,600.00	7,478.30	2,535.34	2,483.14	48.573	ES
KUGEL 21-18 - CPR WELL - GYRO	10,500.00	7,493.45	2,704.14	2,641.90	43.452	SF
KUGEL 2-18 - CPR WELL - GYRO	8,512.98	7,488.48	228.68	189.11	5.780	CC, ES, SF
KUGEL 22-18 - CPR WELL - GYRO	8,084.92	7,407.99	2,370.88	2,334.88	65.858	CC
KUGEL 22-18 - CPR WELL - GYRO	8,100.00	7,407.52	2,370.92	2,334.84	65.698	ES
KUGEL 22-18 - CPR WELL - GYRO	9,300.00	7,374.80	2,663.88	2,618.06	58.139	SF
KUGEL 31-18 - CPR WELL - GYRO	9,695.48	7,518.12	1,348.15	1,294.64	25.195	CC
KUGEL 31-18 - CPR WELL - GYRO	9,700.00	7,518.16	1,348.16	1,294.59	25.166	ES
KUGEL 31-18 - CPR WELL - GYRO	10,000.00	7,520.92	1,382.12	1,325.20	24.285	SF
KUGEL 32-18 - EXTRACTION WELL - NO SURVEYS	2,048.78	2,035.63	1,260.89	1,250.34	119.473	CC
KUGEL 32-18 - EXTRACTION WELL - NO SURVEYS	2,500.00	2,483.44	1,262.11	1,249.46	99.786	ES
KUGEL 32-18 - EXTRACTION WELL - NO SURVEYS	5,100.00	5,018.00	1,316.08	1,285.56	43.125	SF
KUGEL 41-18 - CPR WELL - GYRO	9,680.87	7,459.70	282.04	228.76	5.294	CC, ES
KUGEL 41-18 - CPR WELL - GYRO	9,700.00	7,459.86	282.69	229.27	5.292	SF
KUGEL 42-18 - CPR WELL - GYRO	1,160.64	1,146.67	211.16	207.31	54.771	CC
KUGEL 42-18 - CPR WELL - GYRO	1,200.00	1,186.00	211.26	207.27	52.892	ES
KUGEL 42-18 - CPR WELL - GYRO	7,862.18	7,470.34	314.37	279.48	9.009	SF
KUGEL V18-3 - KMG WELL - GYRO	9,509.07	7,440.24	2,576.83	2,525.88	50.573	CC, ES
KUGEL V18-3 - KMG WELL - GYRO	10,500.00	7,456.87	2,760.74	2,698.73	44.519	SF
LINCOLN 2 - LINCOLN 2 - HS RESOURCES WELL	5,250.60	5,010.00	2,630.50	2,599.68	85.363	CC, ES
LINCOLN 2 - LINCOLN 2 - HS RESOURCES WELL	5,700.00	5,010.00	2,668.61	2,636.61	83.392	SF
LISA 1 - KMG WELL - GYRO	6,947.88	6,865.94	2,493.46	2,461.76	78.656	CC, ES
LISA 1 - KMG WELL - GYRO	7,500.00	7,346.32	2,537.35	2,504.01	76.111	SF
LISA 2 - KMG WELL - GYRO	6,862.21	6,794.59	2,909.80	2,879.24	95.214	CC, ES
LISA 2 - KMG WELL - GYRO	7,200.00	7,131.81	2,952.87	2,921.03	92.748	SF
ROCKY MOUNTAIN FUEL 12 - HS RESOURCES WELL	5,555.35	5,100.00	3,366.68	3,335.31	107.289	CC, ES
ROCKY MOUNTAIN FUEL 12 - HS RESOURCES WELL	6,200.00	5,100.00	3,427.85	3,394.96	104.219	SF
ROCKY MTN FUEL D 8 - HS RESOURCES WELL - NO	5,542.47	5,026.00	3,938.84	3,907.65	126.281	CC, ES
ROCKY MTN FUEL D 8 - HS RESOURCES WELL - NO	6,400.00	5,026.00	4,031.11	3,997.76	120.899	SF
STREAR V 06-23D - KMG WELL - GYRO	15,456.99	7,468.90	1,426.83	1,365.81	23.382	CC, ES, SF
STREAR V 06-63HN - KMG WELL - SURVEYS	15,456.99	7,625.00	999.71	941.42	17.152	CC, ES, SF
WANDELL 1 - CPR WELL - GYRO	14,485.13	7,424.83	195.94	70.65	1.564	CC, ES, SF
WANDELL 21-7 - CPR WELL - GYRO	14,564.98	7,366.38	2,216.47	2,090.12	17.542	CC
WANDELL 21-7 - CPR WELL - GYRO	14,600.00	7,365.40	2,216.75	2,089.87	17.471	ES
WANDELL 21-7 - CPR WELL - GYRO	14,900.00	7,356.85	2,241.63	2,111.37	17.208	SF
WANDELL 22-7 - CPR WELL - SURVEYS	13,449.27	7,742.25	2,153.36	2,039.25	18.870	CC
WANDELL 22-7 - CPR WELL - SURVEYS	13,500.00	7,742.65	2,153.96	2,039.04	18.744	ES
WANDELL 22-7 - CPR WELL - SURVEYS	13,800.00	7,744.97	2,181.73	2,062.89	18.359	SF
WANDELL 24-7 - CPR WELL - SURVEYS	10,639.75	7,616.54	2,410.27	2,326.90	28.913	CC

CC - Min centre to center distance or convergent point, SF - min separation factor, ES - min ellipse separation

# Cathedral Energy Services

## Anticollision Summary Report

<b>Company:</b>	Crestone Peak Resources	<b>Local Co-ordinate Reference:</b>	Well KUGEL 11-18H-H267 - Slot KUGEL 11
<b>Project:</b>	DJ BASIN	<b>TVD Reference:</b>	23' KB @ 4976.00usft
<b>Reference Site:</b>	S18-T2N-R67W (KUGEL)	<b>MD Reference:</b>	23' KB @ 4976.00usft
<b>Site Error:</b>	0.00 usft	<b>North Reference:</b>	True
<b>Reference Well:</b>	KUGEL 11-18H-H267	<b>Survey Calculation Method:</b>	Minimum Curvature
<b>Well Error:</b>	0.00 usft	<b>Output errors are at</b>	2.00 sigma
<b>Reference Wellbore</b>	OH	<b>Database:</b>	USA EDM 5000 Multi Users DB
<b>Reference Design:</b>	PLAN #3 (6.11)	<b>Offset TVD Reference:</b>	Offset Datum

Summary						
Site Name	Reference Measured Depth (usft)	Offset Measured Depth (usft)	Distance Between Centres (usft)	Distance Between Ellipses (usft)	Separation Factor	Warning
Offset Well - Wellbore - Design						
S18-T2N-R67W (KUGEL)						
WANDELL 24-7 - CPR WELL - SURVEYS	10,700.00	7,617.00	2,411.02	2,326.79	28.625	ES
WANDELL 24-7 - CPR WELL - SURVEYS	11,300.00	7,621.68	2,495.37	2,404.43	27.439	SF
WANDELL 31-7 - CPR WELL - SURVEYS	14,937.89	7,536.49	1,066.71	920.18	7.280	CC, ES
WANDELL 31-7 - CPR WELL - SURVEYS	15,000.00	7,536.68	1,068.51	921.04	7.245	SF
WANDELL 32-7 - CPR WELL - GYRO	13,530.55	7,435.46	1,099.66	989.28	9.963	CC, ES
WANDELL 32-7 - CPR WELL - GYRO	13,600.00	7,435.23	1,101.85	990.60	9.904	SF
WANDELL 33-7 - CPR WELL - SURVEYS	12,184.44	7,607.93	1,131.73	1,022.60	10.370	CC
WANDELL 33-7 - CPR WELL - SURVEYS	12,200.00	7,607.94	1,131.84	1,022.49	10.351	ES
WANDELL 33-7 - CPR WELL - SURVEYS	12,300.00	7,608.04	1,137.61	1,027.24	10.307	SF
WANDELL 34-7 - CPR WELL - GYRO	10,675.23	7,605.52	1,197.87	1,129.91	17.626	CC
WANDELL 34-7 - CPR WELL - GYRO	10,700.00	7,605.54	1,198.13	1,129.80	17.536	ES
WANDELL 34-7 - CPR WELL - GYRO	10,900.00	7,605.71	1,218.78	1,148.28	17.288	SF
WANDELL 4-0-7 - CPR WELL - SURVEYS	15,422.65	7,693.86	1,766.04	1,613.30	11.562	CC, ES
WANDELL 4-0-7 - CPR WELL - SURVEYS	15,456.99	7,693.85	1,766.40	1,613.47	11.550	SF
WANDELL 41-7 - CPR WELL - SURVEYS	14,982.19	7,506.61	336.85	203.77	2.531	CC, ES, SF
WANDELL 42-7 - CPR WELL - SURVEYS	13,401.68	7,599.06	278.32	151.87	2.201	CC, ES, SF
WANDELL 43-7 - CPR WELL - SURVEYS	12,088.42	7,815.14	145.27	33.88	1.304	Level 3, CC, ES, SF
WANDELL 4-4-7 - CPR WELL - SURVEYS	12,734.54	7,787.09	1,868.27	1,758.30	16.988	CC
WANDELL 4-4-7 - CPR WELL - SURVEYS	12,800.00	7,787.48	1,869.42	1,757.86	16.757	ES
WANDELL 4-4-7 - CPR WELL - SURVEYS	13,200.00	7,789.83	1,925.38	1,806.35	16.176	SF
WANDELL 4-6-7 - CPR WELL - SURVEYS	11,479.35	7,824.97	1,552.04	1,447.88	14.901	CC
WANDELL 4-6-7 - CPR WELL - SURVEYS	11,500.00	7,825.06	1,552.17	1,447.68	14.854	ES
WANDELL 4-6-7 - CPR WELL - SURVEYS	11,700.00	7,825.94	1,567.64	1,460.55	14.638	SF
WANDELL 6-0-7 - CPR WELL - SURVEYS	15,437.30	7,523.24	488.14	331.99	3.126	CC, ES
WANDELL 6-0-7 - CPR WELL - SURVEYS	15,456.99	7,523.46	488.57	332.18	3.124	SF
WANDELL 6-4-7 - CPR WELL - SURVEYS	12,644.37	7,818.59	451.48	328.23	3.663	CC, ES, SF
WANDELL 6-8-7 - CPR WELL - SURVEYS	10,204.99	7,600.61	454.71	379.24	6.024	CC, ES, SF
WANDELL 8-2-7 - CPR WELL - SURVEYS	14,085.23	7,596.87	786.33	652.18	5.862	CC, ES
WANDELL 8-2-7 - CPR WELL - SURVEYS	14,100.00	7,596.96	786.47	652.19	5.857	SF
WANDELL 8-4-7 - CPR WELL - SURVEYS	12,875.82	7,826.72	754.91	628.61	5.977	CC, ES, SF
WANDELL E UNIT 1 - CPR WELL - NO SURVEYS	11,099.01	7,456.00	95.32	18.31	1.238	Level 2, CC, ES, SF

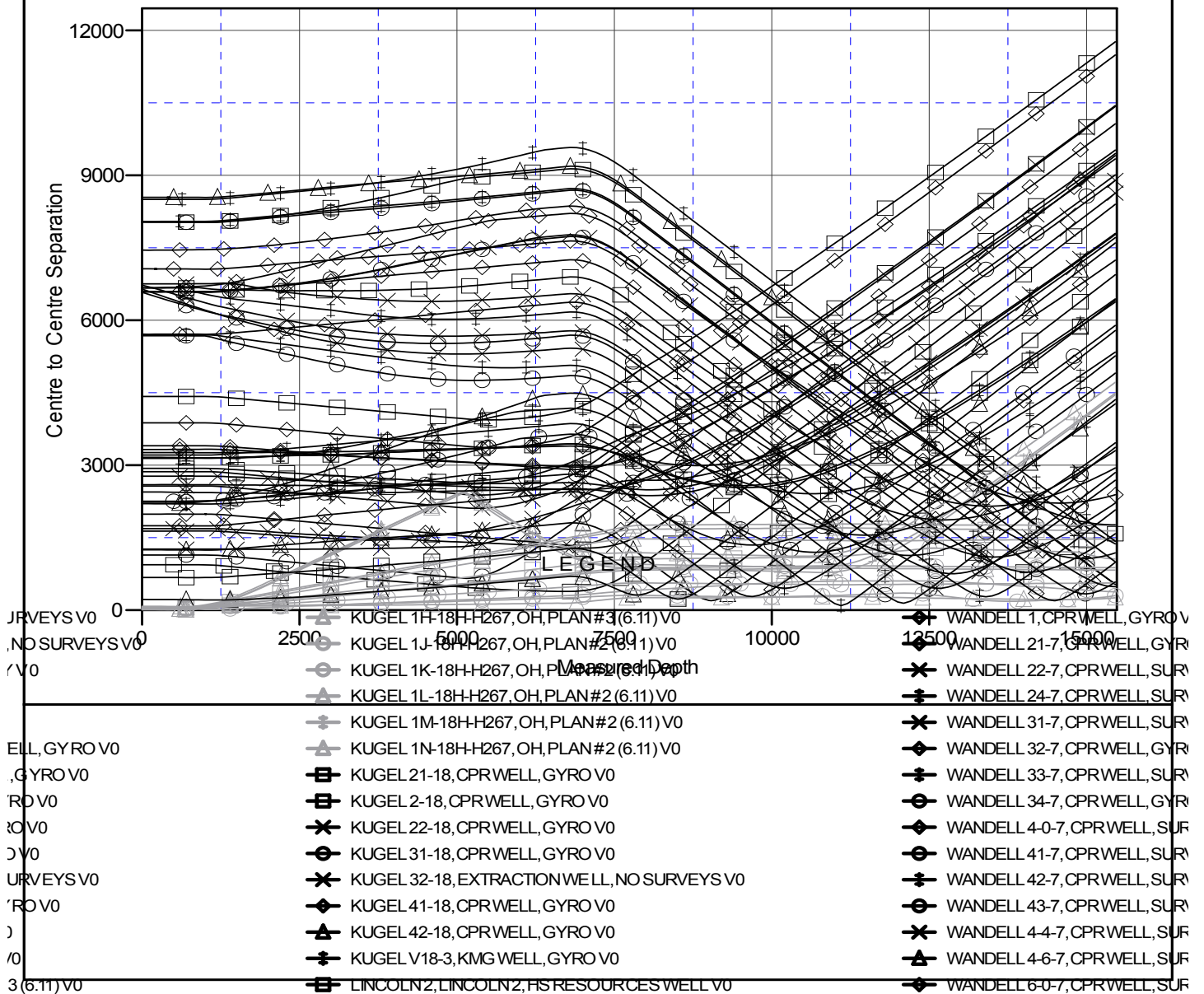
**Cathedral Energy Services**  
Anticollision Summary Report

<b>Company:</b>	Crestone Peak Resources	<b>Local Co-ordinate Reference:</b>	Well KUGEL 1I-18H-H267 - Slot KUGEL 1I
<b>Project:</b>	DJ BASIN	<b>TVD Reference:</b>	23' KB @ 4976.00usft
<b>Reference Site:</b>	S18-T2N-R67W (KUGEL)	<b>MD Reference:</b>	23' KB @ 4976.00usft
<b>Site Error:</b>	0.00 usft	<b>North Reference:</b>	True
<b>Reference Well:</b>	KUGEL 1I-18H-H267	<b>Survey Calculation Method:</b>	Minimum Curvature
<b>Well Error:</b>	0.00 usft	<b>Output errors are at</b>	2.00 sigma
<b>Reference Wellbore</b>	OH	<b>Database:</b>	USA EDM 5000 Multi Users DB
<b>Reference Design:</b>	PLAN #3 (6.11)	<b>Offset TVD Reference:</b>	Offset Datum

Reference Depths are relative to 23' KB @ 4976.00usft  
Offset Depths are relative to Offset Datum  
Central Meridian is -105.500000

Coordinates are relative to: KUGEL 1I-18H-H267 - Slot KUGEL 1I  
Coordinate System is US State Plane 1983, Colorado Northern Zone  
Grid Convergence at Surface is: 0.37°

## Ladder Plot



CC - Min centre to center distance or convergent point, SF - min separation factor, ES - min ellipse separation

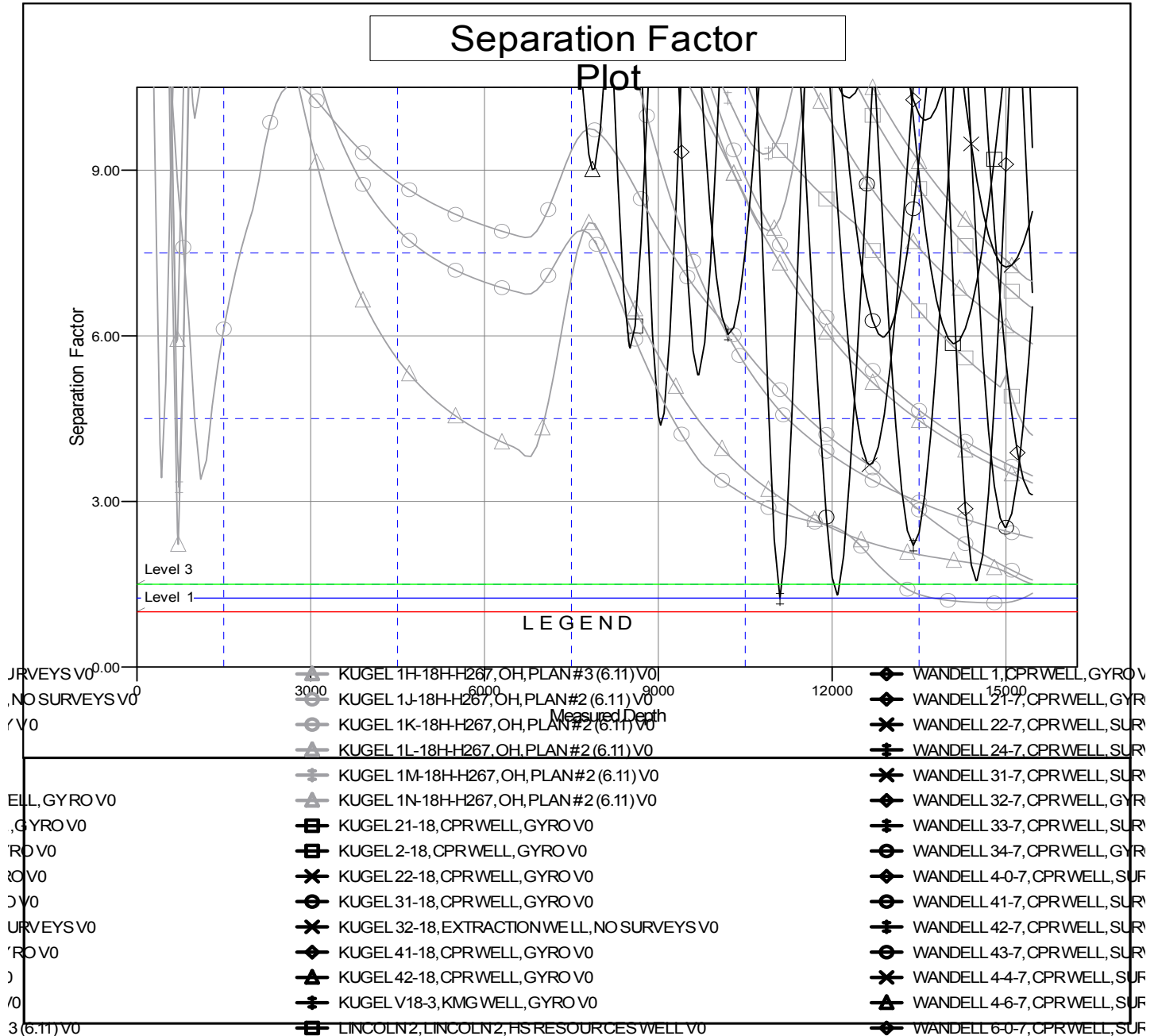
# Cathedral Energy Services

## Anticollision Summary Report

<b>Company:</b>	Crestone Peak Resources	<b>Local Co-ordinate Reference:</b>	Well KUGEL 11-18H-H267 - Slot KUGEL 11
<b>Project:</b>	DJ BASIN	<b>TVD Reference:</b>	23' KB @ 4976.00usft
<b>Reference Site:</b>	S18-T2N-R67W (KUGEL)	<b>MD Reference:</b>	23' KB @ 4976.00usft
<b>Site Error:</b>	0.00 usft	<b>North Reference:</b>	True
<b>Reference Well:</b>	KUGEL 11-18H-H267	<b>Survey Calculation Method:</b>	Minimum Curvature
<b>Well Error:</b>	0.00 usft	<b>Output errors are at</b>	2.00 sigma
<b>Reference Wellbore</b>	OH	<b>Database:</b>	USA EDM 5000 Multi Users DB
<b>Reference Design:</b>	PLAN #3 (6.11)	<b>Offset TVD Reference:</b>	Offset Datum

Reference Depths are relative to 23' KB @ 4976.00usft  
Offset Depths are relative to Offset Datum  
Central Meridian is -105.500000

Coordinates are relative to: KUGEL 11-18H-H267 - Slot KUGEL 11  
Coordinate System is US State Plane 1983, Colorado Northern Zone  
Grid Convergence at Surface is: 0.37°



CC - Min centre to center distance or convergent point, SF - min separation factor, ES - min ellipse separation