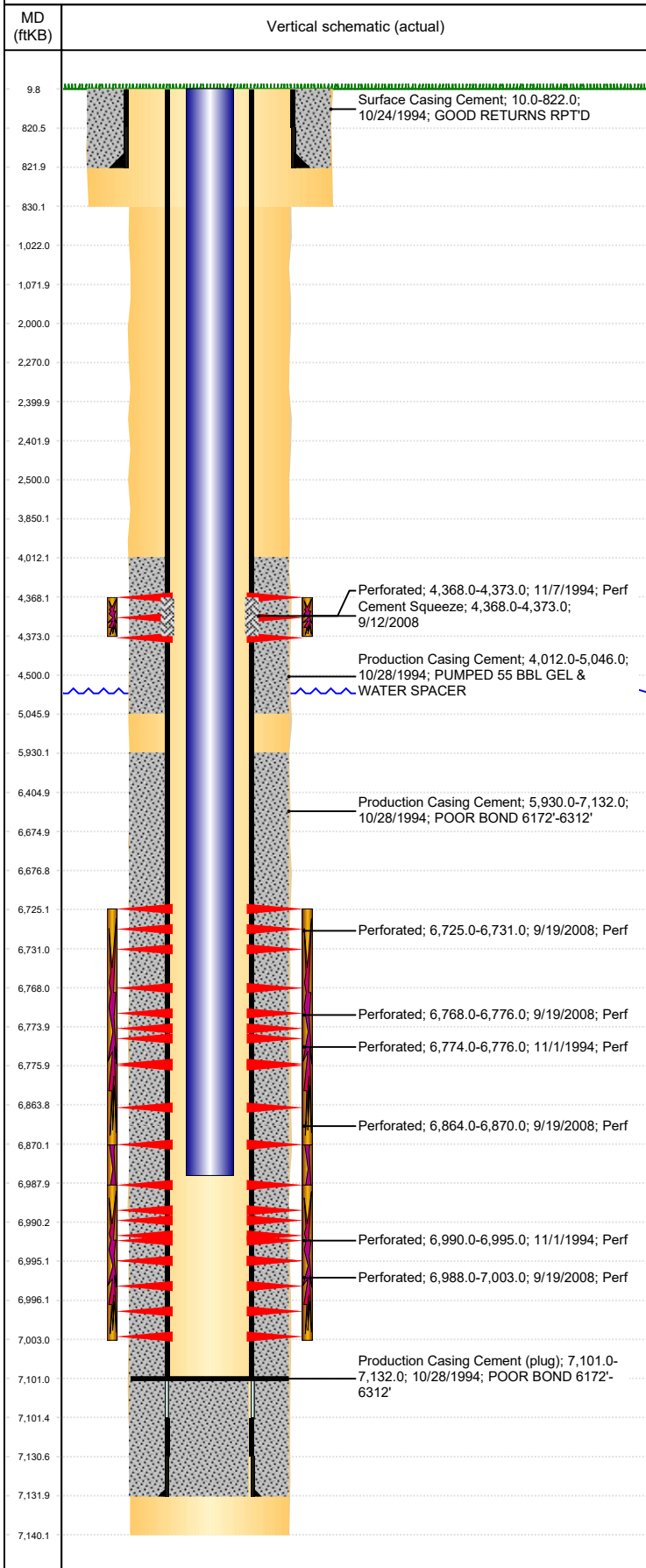


Well Name: HSR-LDS B 6-17

VERTICAL - ORIGINAL HOLE, 10/8/2018 4:16:07 PM



Well Header									
API 05-123-18508		Business Unit DJ BASIN			District 15		Well Config VERTICAL		
KB - GL / MSL (ft...) 10.00		Spud Date 10/23/1994		P & A Date		Well Production Status SI			SoRT No
Comment WELLHEAD IS 3000# BACKSIDE VALVE, 5000# WORKING PSI									
Surface Location (Congressional)									
Qtr 3	Qtr 4	Section	Twonshp	Twonsh...	Range	Rng E/...	Actual Latitude (°)		Actual Longitude (°)
SE	NW	17	3	N	64	W	40.22718500		-104.57802100
Wellbore Sections									
Section Des			Size (in)			Act Top, MD (ftKB)		Act Btm, MD (ftKB)	
SURFACE			12 1/4			10		830	
PRODUCTION			7 7/8			830		7,140	
Casing Strings									
Csg Des		Run Date		OD (in)	Wt/Len (lb/ft)	Grade	Top, MD (ftKB)	MD (ftKB)	
Surface		10/24/1994		8 5/8	24.00		10.0	822.0	
Production		10/28/1994		4 1/2	11.60	I-70	10.0	7,132.0	
Cement									
Des					Start Date		Top (ftKB)		Btm (ftKB)
Surface Casing Cement					10/24/1994		10.0		822.0
Production Casing Cement					10/28/1994		4,012.0		5,046.0
Production Casing Cement					10/28/1994		5,930.0		7,132.0
Cement Squeeze					9/12/2008		4,368.0		4,373.0
Zone Statuses									
Zone Name		Status Date	Status	Fluid Type	Job			Prod Method	
SUSSEX		4/7/2014	PR	Water	RE-FRAC, 9/9/2008 00:00			Flowing	
SUSSEX		3/10/2017	SI						
NIOBRARA		10/14/2008	PR						
NIOBRARA		4/7/2014	PR	Water				Flowing	
CODELL		4/7/2014	PR	Water				Flowing	
CODELL		3/10/2017	SI						
NIOBRARA-CO...		4/7/2014	PR	Water				Flowing	
Perforation Data									
Linked Zone		Bnch/Stg	Entered Shot Total		Top (ftKB)		Btm (ftKB)		Date
SUSSEX, ORIGINAL HOLE			12		4,368.00		4,373.00		11/7/1994
NIOBRARA, ORIGINAL HOLE			6		6,725.00		6,731.00		9/19/2008
NIOBRARA, ORIGINAL HOLE			8		6,768.00		6,776.00		9/19/2008
NIOBRARA, ORIGINAL HOLE			6		6,774.00		6,776.00		11/1/1994
NIOBRARA, ORIGINAL HOLE			6		6,864.00		6,870.00		9/19/2008
CODELL, ORIGINAL HOLE			30		6,988.00		7,003.00		9/19/2008
CODELL, ORIGINAL HOLE			12		6,990.00		6,995.00		11/1/1994
Stimulation Intervals									
Zone				Start Date		Top (ftKB)		Btm (ftKB)	
SUSSEX, ORIGINAL HOLE				11/9/1994		4,368.0		4,373.0	
NIOBRARA, ORIGINAL HOLE				9/25/2008		6,725.0		6,870.0	
NIOBRARA-CODELL, ORIGINAL HOLE				11/2/1994		6,774.0		6,996.0	
CODELL, ORIGINAL HOLE				9/25/2008		6,988.0		7,003.0	
Other In Hole									
Run Date		Des				OD (in)	Top (ftKB)	Btm (ftKB)	
Logs									
Date		Type				Top, MD (ftKB)		Btm, MD (ftKB)	
10/28/1994		COMPENSATED DENSITY				4,200.0		7,135.0	
10/28/1994		INDUCTION				835.0		7,138.0	
11/1/1994		CBL/CCL/GR				3,880.0		7,076.0	
9/19/2008		PERFORATION				6,725.0		7,003.0	
Plug Back Total Depths									
Date		Type		Com					Depth (ftKB)
11/1/1994		FILL		DEPTH LOGGER ON CBL					7,081.0
11/19/1994		FILL		CLEAN OUT					7,101.0