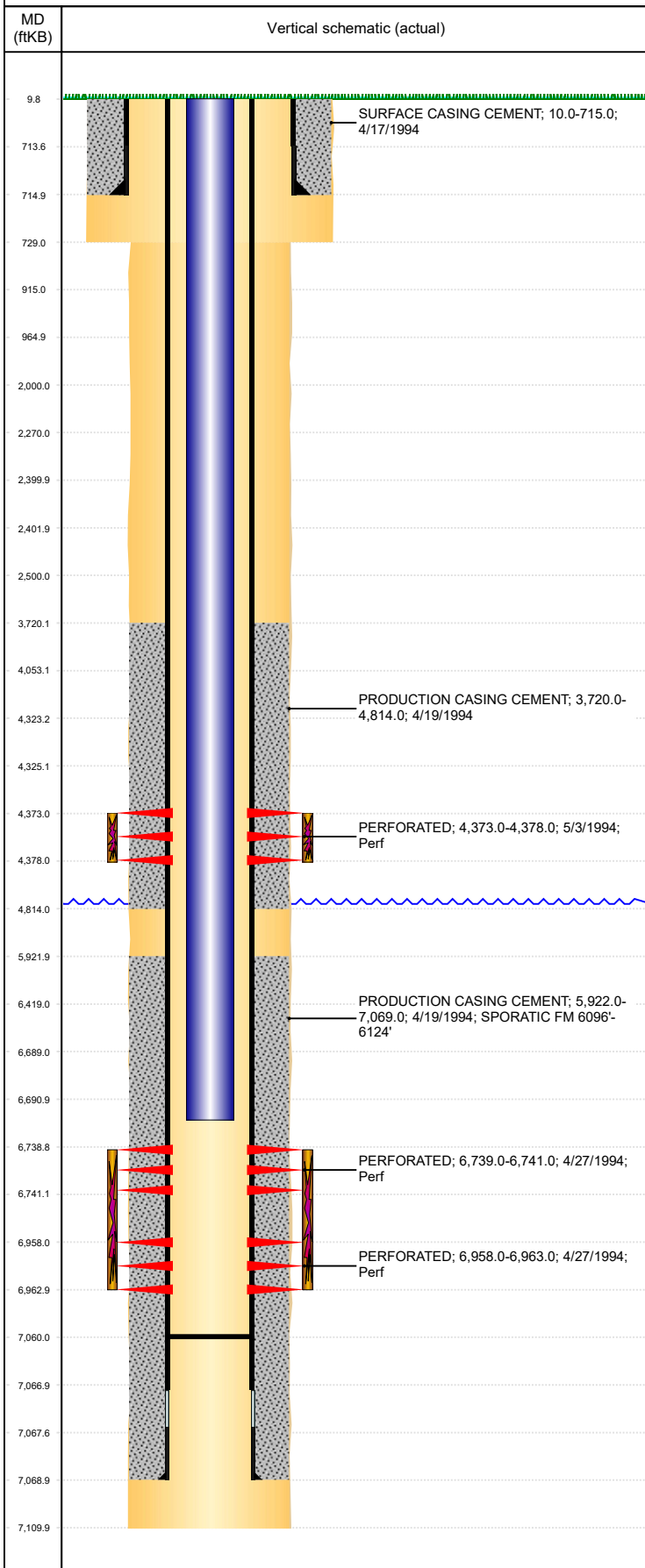


Well Name: HSR-WEEKS 15-17

VERTICAL - ORIGINAL HOLE, 10/8/2018 4:01:33 PM



Well Header										
API 05-123-18100		Business Unit DJ BASIN			District 15		Well Config VERTICAL			
KB - GL / MSL (ft... 10.00		Spud Date 4/16/1994		P & A Date		Well Production Status SI			SoRT No	
Comment										
Surface Location (Congressional)										
Qtr 3 SW	Qtr 4 SE	Section 17	Twonshp 3	Twonsh... N	Range 64	Rng E/... W	Actual Latitude (°) 40.21993980	Actual Longitude (°) -104.57264550		
Wellbore Sections										
Section Des			Size (in)			Act Top, MD (ftKB)		Act Btm, MD (ftKB)		
SURFACE			12 1/4			10		729		
PRODUCTION			7 7/8			729		7,110		
Casing Strings										
Csg Des			Run Date		OD (in)	Wt/Len (lb/ft)	Grade	Top, MD (ftKB)	MD (ftKB)	
Surface			4/17/1994		8 5/8	24.00		10.0	715.0	
Production			4/19/1994		4 1/2	11.60	I-70	10.0	7,069.0	
Cement										
Des					Start Date		Top (ftKB)		Btm (ftKB)	
SURFACE CASING CEMENT					4/17/1994		10.0		715.0	
PRODUCTION CASING CEMENT					4/19/1994		3,720.0		4,814.0	
PRODUCTION CASING CEMENT					4/19/1994		5,922.0		7,069.0	
Zone Statuses										
Zone Name		Status Date	Status	Fluid Type	Job				Prod Method	
SUSSEX		5/8/2014	PR	Water	DRILLING/COMPLETION - ORIGINAL, 4/16/1994...				Flowing	
SUSSEX		5/9/2017	SI							
NIOBRARA		5/9/1994	PR	Oil						
NIOBRARA		5/8/2014	PR	Water						
CODELL		5/8/2014	PR	Water						
CODELL		5/9/2017	SI						Flowing Flowing	
Perforation Data										
Linked Zone			Bnch/Stg	Entered Shot Total	Top (ftKB)		Btm (ftKB)		Date	
SUSSEX, ORIGINAL HOLE			B	12	4,373.00		4,378.00		5/3/1994	
NIOBRARA, ORIGINAL HOLE				6	6,739.00		6,741.00		4/27/1994	
CODELL, ORIGINAL HOLE				12	6,958.00		6,963.00		4/27/1994	
Stimulation Intervals										
Zone				Start Date		Top (ftKB)		Btm (ftKB)		
SUSSEX, ORIGINAL HOLE				5/4/1994		4,373.0		4,378.0		
NIOBRARA-CODELL, ORIGINAL HOLE				4/28/1994		6,739.0		6,963.0		
Other In Hole										
Run Date		Des				OD (in)	Top (ftKB)		Btm (ftKB)	
Logs										
Date		Type				Top, MD (ftKB)		Btm, MD (ftKB)		
4/20/1994		COMPENSATED DENSITY				4,220.0		7,108.0		
4/20/1994		INDUCTION				715.0		7,108.0		
4/27/1994		CEMENT BOND				3,600.0		7,057.0		
4/28/2017		GYRO				0.0		6,650.0		
Plug Back Total Depths										
Date		Type		Com				Depth (ftKB)		
4/27/1994		FILL		DEPTH LOGGER ON CBL				7,063.0		
5/6/1994		FILL		CLEAN OUT TO 7060'				7,060.0		