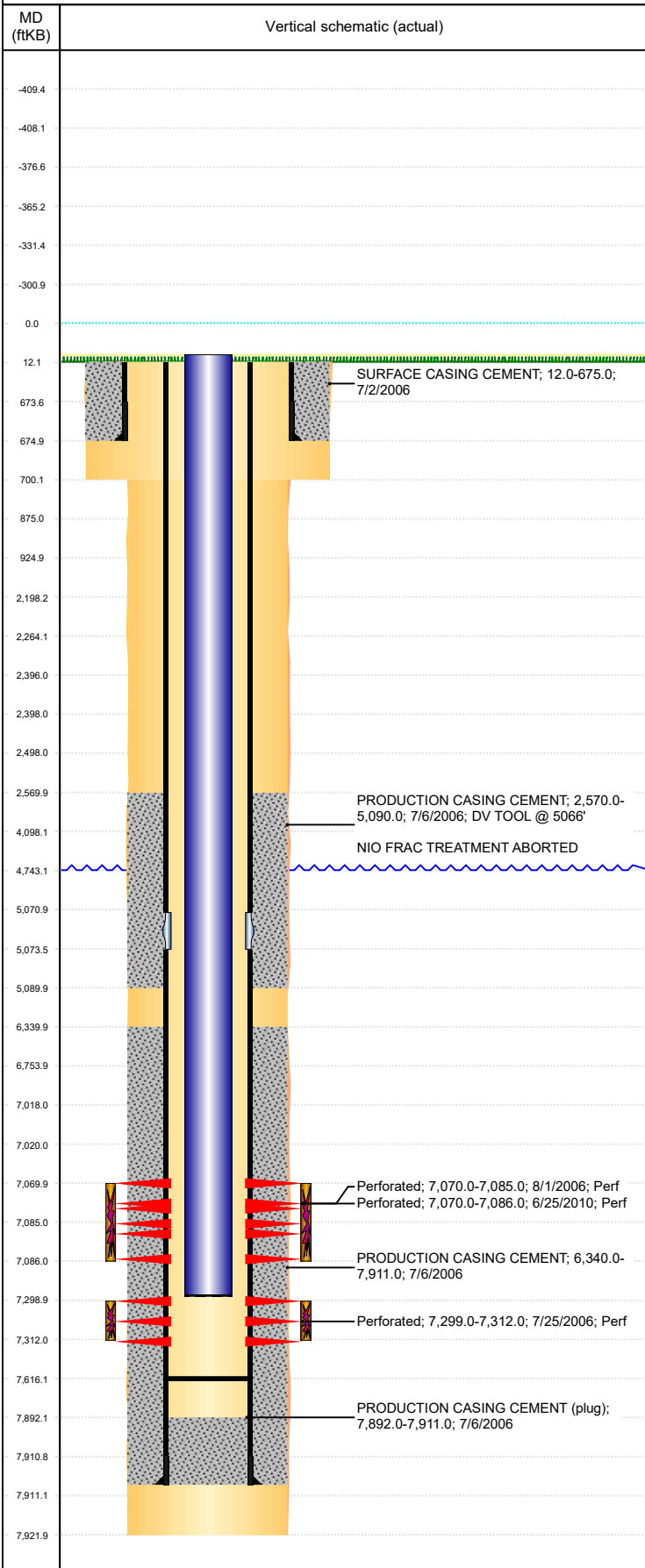


**Well Name: SCOOTER D18-08JI**

DEVIATED - ORIGINAL HOLE, 10/8/2018 2:23:55 PM



Well Header									
API 05-123-23696		Business Unit DJ BASIN			District 15		Well Config DEVIATED		
KB - GL / MSL (ft... 12.00		Spud Date 7/1/2006		P & A Date		Well Production Status PR			SoRT No
Comment									
Surface Location (Congressional)									
Qtr 3 NE	Qtr 4 SE	Section 18	Twnshp 3	Twنش... N	Range 64	Rng E/... W	Actual Latitude (°) 40.22228858	Actual Longitude (°) -104.58786217	
Wellbore Sections									
Section Des			Size (in)			Act Top, MD (ftKB)		Act Btm, MD (ftKB)	
SURFACE			12 1/4			12		700	
PRODUCTION			7 7/8			700		7,922	
Casing Strings									
Csg Des			Run Date		OD (in)	Wt/Len (lb/ft)	Grade	Top, MD (ftKB)	MD (ftKB)
Surface			7/2/2006		8 5/8	24.00	J-55	12.0	675.0
Production			7/6/2006		4 1/2	11.60	M-80	12.0	7,911.0
Cement									
Des					Start Date		Top (ftKB)		Btm (ftKB)
SURFACE CASING CEMENT					7/2/2006		12.0		675.0
PRODUCTION CASING CEMENT					7/6/2006		2,570.0		5,090.0
PRODUCTION CASING CEMENT					7/6/2006		6,340.0		7,911.0
Zone Statuses									
Zone Name	Status Date	Status	Fluid Type	Job				Prod Method	
CODELL	6/24/2010	SI	Gas	RECOMPLETION, 6/23/2010 06:30					
CODELL	8/10/2010	PR	Gas	RECOMPLETION, 6/23/2010 06:30					
NIOBRARA	7/8/2010	PR	Gas	RECOMPLETION, 6/23/2010 06:30					
NIOBRARA	8/10/2010	PR	Gas	RECOMPLETION, 6/23/2010 06:30					
Perforation Data									
Linked Zone		Bnch/Stg	Entered Shot Total	Top (ftKB)		Btm (ftKB)		Date	
NIOBRARA, ORIGINAL HOLE		B	90	7,070.00		7,085.00		8/1/2006	
NIOBRARA, ORIGINAL HOLE			32	7,070.00		7,086.00		6/25/2010	
CODELL, ORIGINAL HOLE			52	7,299.00		7,312.00		7/25/2006	
Stimulation Intervals									
Zone				Start Date		Top (ftKB)		Btm (ftKB)	
NIOBRARA, ORIGINAL HOLE				7/7/2010		7,070.0		7,086.0	
CODELL, ORIGINAL HOLE				8/1/2006		7,299.0		7,312.0	
Other In Hole									
Run Date		Des				OD (in)	Top (ftKB)		Btm (ftKB)
Logs									
Date		Type				Top, MD (ftKB)		Btm, MD (ftKB)	
7/6/2006		COMPENSATED DENSITY				3,000.0		7,899.0	
7/6/2006		INDUCTION				675.0		7,919.0	
7/25/2006		CBL/CCL/GR				2,423.0		7,881.0	
3/27/2017		GYRO				0.0		7,200.0	
Plug Back Total Depths									
Date		Type		Com				Depth (ftKB)	
7/6/2006		FLOAT COLLAR		FLOAT COLLAR				7,892.0	
12/19/2006		PLUG REMNANTS		PLUG REMNANTS				7,616.0	