


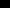


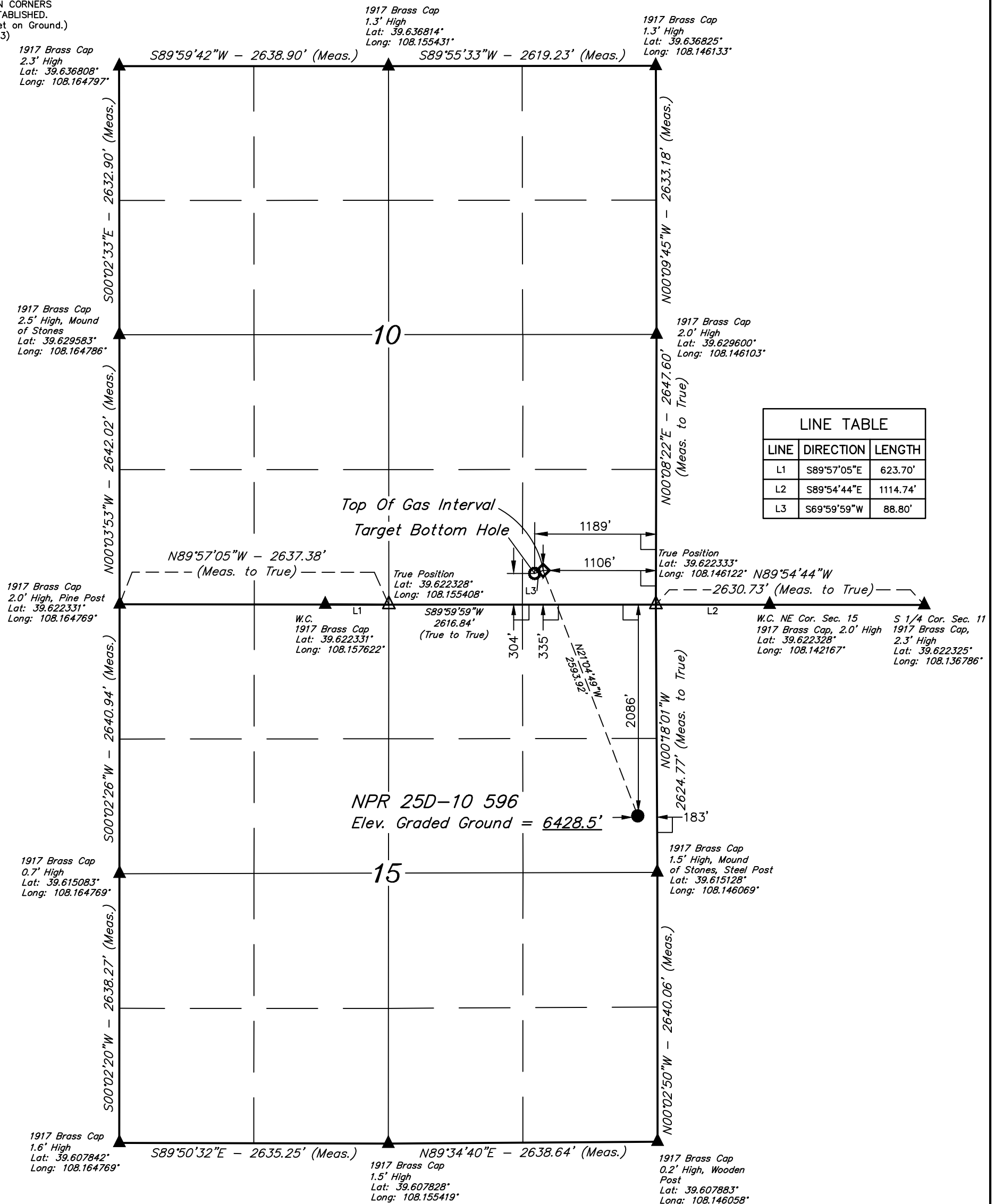


T5S, R96W, 6th P.M.

-  = 90° SYMBOL.
 = PROPOSED WELLHEAD.
 = TOP OF GAS INTERVAL.
 = TARGET BOTTOM HOLE.
 = SECTION CORNERS LOCATED. (NAD 83)
 = SECTION CORNERS RE-ESTABLISHED. (Not Set on Ground.) (NAD 83)



LINE TABLE		
LINE	DIRECTION	LENGTH
L1	S89°57'05"E	623.70'
L2	S89°54'44"E	1114.74'
L3	S69°59'59"W	88.80'

PDOP = 3.7

NAD 83 (SURFACE LOCATION)	NAD 83 (TOP OF GAS INTERVAL)	NAD 83 (TARGET BOTTOM HOLE)
LATITUDE = 39°36'59.79" (39.616608)	LATITUDE = 39°37'23.70" (39.623250)	LATITUDE = 39°37'23.40" (39.623167)
LONGITUDE = 108°08'48.22" (108.146728)	LONGITUDE = 108°09'00.16" (108.150044)	LONGITUDE = 108°09'01.22" (108.150340)
NAD 27 (SURFACE LOCATION)	NAD 27 (TOP OF GAS INTERVAL)	NAD 27 (TARGET BOTTOM HOLE)
LATITUDE = 39°36'59.88" (39.616633)	LATITUDE = 39°37'23.79" (39.623274)	LATITUDE = 39°37'23.49" (39.623190)
LONGITUDE = 108°08'45.94" (108.146094)	LONGITUDE = 108°08'57.87" (108.149408)	LONGITUDE = 108°08'58.93" (108.149704)
UTM NAD 27 (ZONE 12)	UTM NAD 27 (ZONE 12)	UTM NAD 27 (ZONE 12)
N: 14399222.13 E: 2444191.26	N: 14401611.31 E: 2443180.81	N: 14401578.26 E: 2443098.38

BASIS OF BEARINGS

BASIS OF BEARINGS IS A G.P.S. OBSERVATION

BASIS OF ELEVATION

SPOT ELEVATION AT THE NORTHWEST CORNER OF SECTION 30, T5S, R95W, 6th P.M., TAKEN FROM THE FORKED GULCH QUADRANGLE, GARFIELD COUNTY, COLORADO, 7.5 MINUTE QUAD. (TOPOGRAPHIC MAP) PUBLISHED BY THE UNITED STATES DEPARTMENT OF THE INTERIOR, GEOLOGICAL SURVEY. SAID ELEVATION IS MARKED AS BEING 5966 FEET.



UELS, LLC
Corporate Office * 85 South 200 East
Vernal, UT 84078 * (435) 789-1017



CERTIFICAT

THIS IS TO CERTIFY THAT THE ABOVE PLAT WAS PREPARED AND
LOCATION AS SHOWN WAS STAKED ON THE GROUND FROM FIELD NOTES
OF ACTUAL SURVEYS MADE BY ME OR UNDER MY SUPERVISION AND THAT
THE SAME ARE TRUE AND CORRECT TO THE BEST OF MY KNOWLEDGE AND
BELIEF.

REGISTERED LAND SURVEYOR
REGISTRATION NO. 38130
STATE OF COLORADO
10-04-18

REV: 2 10-04-18 M.D. (TGI & BHL CHANGE)

Caerus Oil & Gas LLC

NPR 25D-10 596
SE 1/4 NE 1/4, SECTION 15, T5S, R96W, 6th P.M.
GARFIELD COUNTY, COLORADO

SURVEYED BY	BART HUNTING, J.F.	08-28-17	SCALE
DRAWN BY	M.D.	09-13-17	1" = 1000'

WELL LOCATION PLAT