



September 16, 2018

Ms. Julie Murphy, Director
Colorado Oil & Gas Conservation Commission
1120 Lincoln Street, Ste. 801
Denver, Colorado 80203

RE: Rule 318.A.e.
Interchange B N35-20-1N
Interchange B N35-20-2C

Surface Location: NESW, Section 10, Township 1 South, Range 68 West, Broomfield County, CO

Dear Ms. Murphy,

Extraction Oil and Gas is planning to drill the captioned horizontal wells in accordance with the provision of COGCC Rule 318A.e.

The proposed wellbore spacing unit consists of:

Section 34-1N-68W: E/2W/2 & W/2E/2
Section 3-1S-68W: E/2W/2 & W/2E/2
Section 10-1S-68W: NENW & NWNE

The spacing unit is a 720-acre wellbore spacing unit for the Niobrara and Codell formations.

Extraction Oil and Gas hereby certifies to the Director that all Owners within the proposed spacing unit above were notified and 30 days have passed without objection.

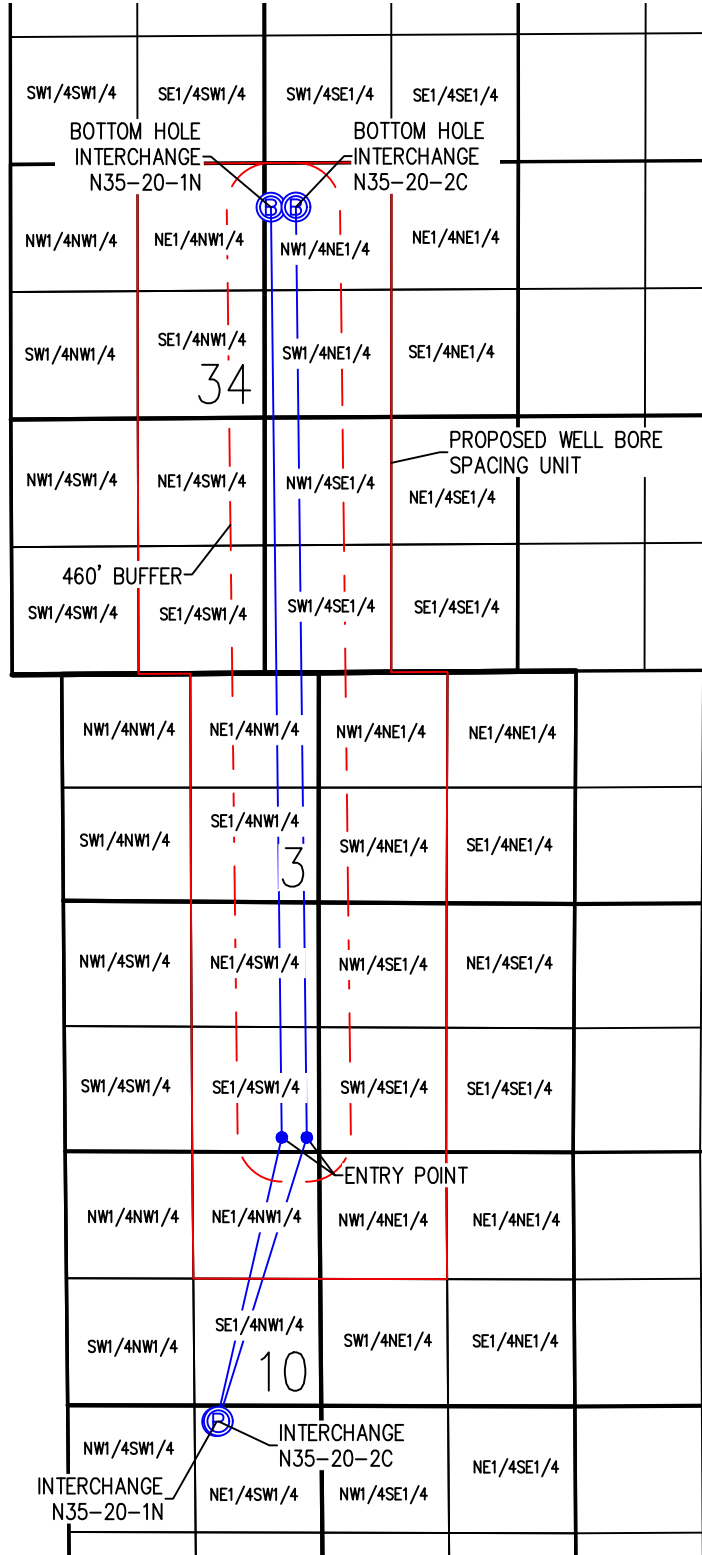
If you have any questions or issues regarding this permit, please contact Alyssa Andrews at (720) 481-2379.

Sincerely,

Alyssa Andrews
Regulatory Analyst
Extraction Oil & Gas, Inc.

WELL BORE DIAGRAM INTERCHANGE A&B PAD

INTERCHANGE B N35-20-1N & INTERCHANGE B N35-20-2C



INTERCHANGE N35-20-1N

SURFACE LOCATION

LATITUDE = 39.978918°
LONGITUDE = -104.991656°

ENTRY POINT LOCATION

LATITUDE = 39.987034°
LONGITUDE = -104.989174°

BOTTOM HOLE LOCATION

LATITUDE = 40.013630°
LONGITUDE = -104.989378°

INTERCHANGE N35-20-2C

SURFACE LOCATION

LATITUDE = 39.978930°
LONGITUDE = -104.991593°

ENTRY POINT LOCATION

LATITUDE = 39.987028°
LONGITUDE = -104.988246°

BOTTOM HOLE LOCATION

LATITUDE = 40.013632°
LONGITUDE = -104.988450°

NOTES:

- THIS SKETCH DOES NOT REPRESENT A BOUNDARY SURVEY.
- THE DATUM FOR THE LATITUDES AND LONGITUDES ON THIS SKETCH IS NAD83.

LEGEND

- (P) - PROPOSED WELL HEAD
- (B) - PROPOSED BOTTOM HOLE
- - ENTRY POINT



DRAWN BY	RPM	CHECKED BY	AAD
INITIAL SUBMITTAL	12/20/2017	REVISED	N/A
DRAWING SIZE	8.5" X 11"	JOB NO.	EXT01S08W10-03
SHEET	1	OF	1

