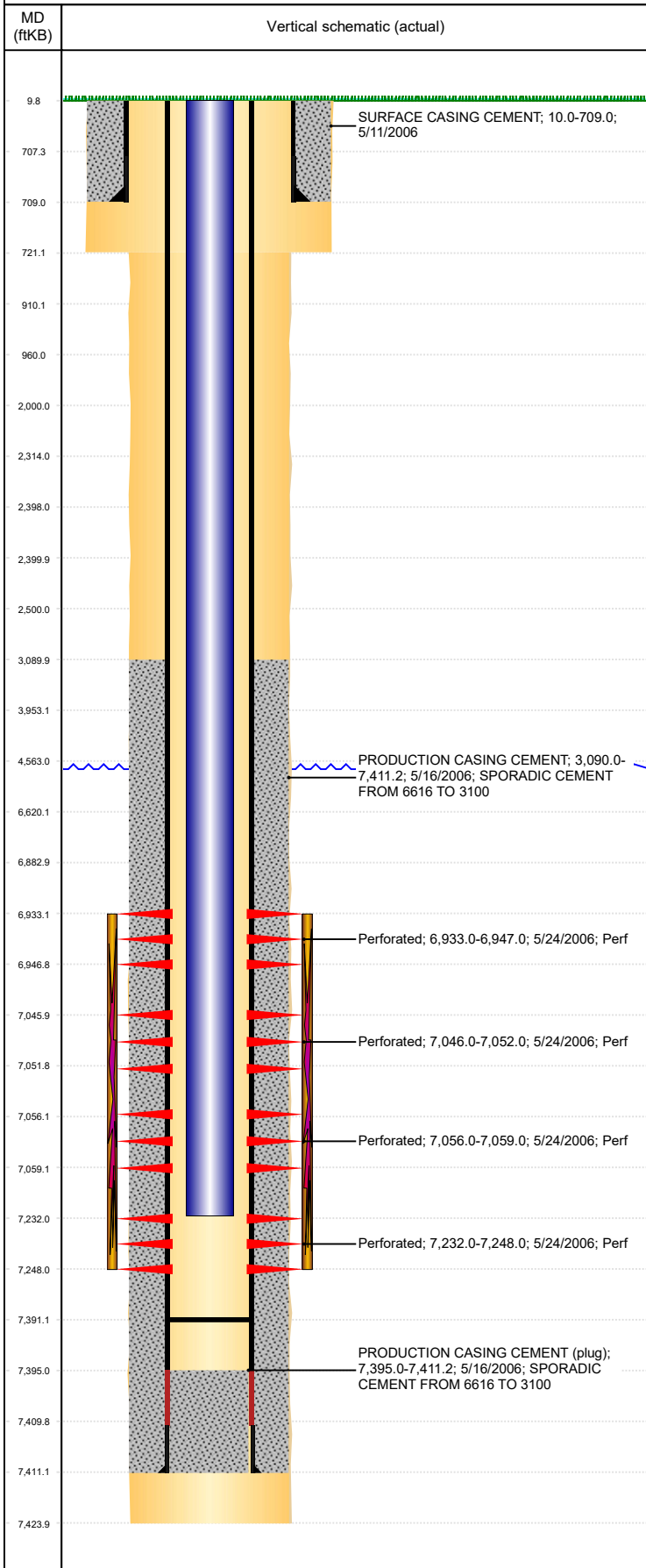


Well Name: KREYKES 13-15

VERTICAL - ORIGINAL HOLE, 10/4/2018 4:29:26 PM



Well Header									
API 05-123-23684		Business Unit DJ BASIN			District 15		Well Config VERTICAL		
KB - GL / MSL (ft... 10.00		Spud Date 5/10/2006		P & A Date		Well Production Status SI			SoRT No
Comment NO SURF CSG JOINT DATA									
Surface Location (Congressional)									
Qtr 3 NE	Qtr 4 NE	Section 13	Twnshp 6	Twنش... N	Range 67	Rng E/... W	Actual Latitude (°) 40.49067000	Actual Longitude (°) -104.83704000	
Wellbore Sections									
Section Des			Size (in)			Act Top, MD (ftKB)		Act Btm, MD (ftKB)	
SURFACE			12 1/4			10		721	
PRODUCTION			7 7/8			721		7,424	
Casing Strings									
Csg Des			Run Date		OD (in)	Wt/Len (lb/ft)	Grade	Top, MD (ftKB)	MD (ftKB)
Surface			5/11/2006		8 5/8			10.0	709.0
Production			5/16/2006		4 1/2	11.60	M-80	10.0	7,411.2
Cement									
Des					Start Date		Top (ftKB)		Btm (ftKB)
SURFACE CASING CEMENT					5/11/2006		10.0		709.0
PRODUCTION CASING CEMENT					5/16/2006		3,090.0		7,411.2
Zone Statuses									
Zone Name	Status Date	Status	Fluid Type	Job					Prod Method
NIOBRARA-CO...	4/10/2010	PR	Water	DRILLING/COMPLETION - ORIGINAL, 5/10/2006...					Flowing
CODELL	4/10/2010	PR	Water						Flowing
CODELL	9/22/2016	SI							
NIOBRARA	6/1/2006	PR							
NIOBRARA	4/10/2010	PR	Water						Flowing
Perforation Data									
Linked Zone		Bnch/Stg	Entered Shot Total	Top (ftKB)		Btm (ftKB)		Date	
NIOBRARA, ORIGINAL HOLE		A	14	6,933.00		6,947.00		5/24/2006	
NIOBRARA, ORIGINAL HOLE		B	12	7,046.00		7,052.00		5/24/2006	
NIOBRARA, ORIGINAL HOLE		B	6	7,056.00		7,059.00		5/24/2006	
CODELL, ORIGINAL HOLE			64	7,232.00		7,248.00		5/24/2006	
Stimulation Intervals									
Zone				Start Date		Top (ftKB)		Btm (ftKB)	
NIOBRARA-CODELL, ORIGINAL HOLE				5/25/2006		6,933.0		7,248.0	
Other In Hole									
Run Date		Des				OD (in)	Top (ftKB)		Btm (ftKB)
Logs									
Date		Type					Top, MD (ftKB)		Btm, MD (ftKB)
5/15/2006		COMPENSATED DENSITY					3,550.0		7,395.0
5/15/2006		INDUCTION					710.0		7,415.0
5/23/2006		CBL/CCL/GR					2,950.0		7,370.0
7/2/2018		GYRO					10.0		7,100.0
Plug Back Total Depths									
Date		Type		Com					Depth (ftKB)
5/23/2006		FILL		DEPTH LOGGER ON CBL					7,372.0
8/8/2006		FILL		CLEAN OUT TO LAND TUBING					7,391.0