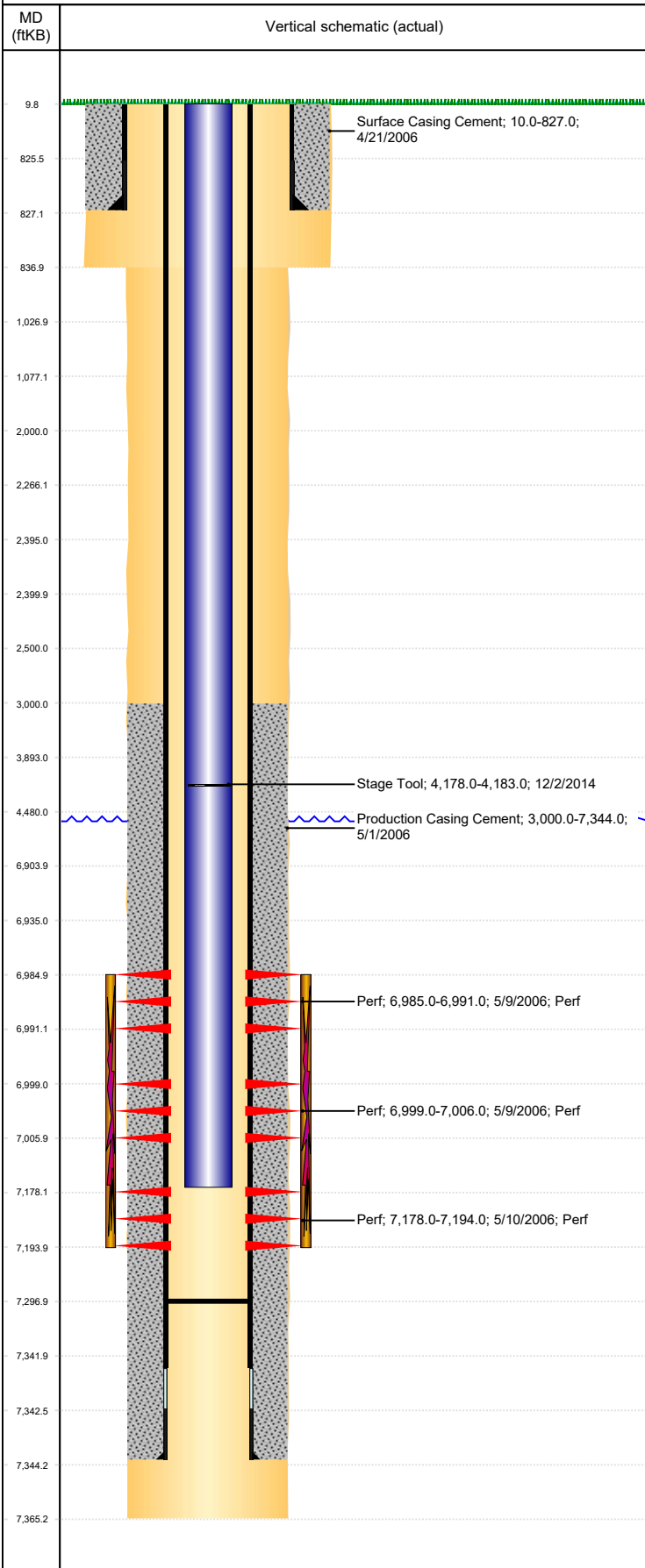


Well Name: DUNBAR 18-35

VERTICAL - ORIGINAL HOLE, 10/4/2018 4:17:59 PM



Well Header									
API 05-123-23600			Business Unit DJ BASIN			District 15		Well Config VERTICAL	
KB - GL / MSL (ft... 10.00		Spud Date 4/20/2006		P & A Date		Well Production Status PR			SoRT No
Comment 12/2/14- STAGE TOOL @ 4178'.									
Surface Location (Congressional)									
Qtr 3 SE	Qtr 4 SW	Section 18	Twnshp 6	Twnshp... N	Range 66	Rng E/... W	Actual Latitude (°) 40.48355000	Actual Longitude (°) -104.82664000	
Wellbore Sections									
Section Des			Size (in)			Act Top, MD (ftKB)		Act Btm, MD (ftKB)	
SURFACE			12 1/4			10		837	
PRODUCTION			7 7/8			837		7,365	
Casing Strings									
Csg Des			Run Date		OD (in)	Wt/Len (lb/ft)	Grade	Top, MD (ftKB)	MD (ftKB)
Surface			4/21/2006		8 5/8			10.0	827.0
Production			4/30/2006		4 1/2	11.60	M-80	10.0	7,344.0
Cement									
Des					Start Date		Top (ftKB)		Btm (ftKB)
Surface Casing Cement					4/21/2006		10.0		827.0
Production Casing Cement					5/1/2006		3,000.0		7,344.0
Zone Statuses									
Zone Name	Status Date	Status	Fluid Type	Job				Prod Method	
CODELL	5/22/2006	PR	Oil	DRILLING/COMPLETION - ORIGINAL, 4/20/2006...					
NIOBRARA	5/22/2006	PR	Oil	DRILLING/COMPLETION - ORIGINAL, 4/20/2006...					
Perforation Data									
Linked Zone			Bnch/Stg	Entered Shot Total	Top (ftKB)		Btm (ftKB)		Date
NIOBRARA, ORIGINAL HOLE			B	13	6,985.00		6,991.00		5/9/2006
NIOBRARA, ORIGINAL HOLE			B	15	6,999.00		7,006.00		5/9/2006
CODELL, ORIGINAL HOLE				65	7,178.00		7,194.00		5/10/2006
Stimulation Intervals									
Zone					Start Date		Top (ftKB)		Btm (ftKB)
NIOBRARA-CODELL, ORIGINAL HOLE					5/11/2006		6,985.0		7,194.0
Other In Hole									
Run Date			Des			OD (in)	Top (ftKB)	Btm (ftKB)	
Logs									
Date		Type					Top, MD (ftKB)		Btm, MD (ftKB)
4/30/2006		COMPENSATED DENSITY / NEUTRON / GR					3,501.0		7,355.0
4/30/2006		INDUCTION					826.0		7,355.0
5/9/2006		CBL/CCL/GR					2,900.0		4,500.0
5/9/2006		CBL/CCL/GR					6,100.0		7,241.0
8/10/2018		GYRO					10.0		7,050.0
Plug Back Total Depths									
Date		Type			Com				Depth (ftKB)
5/1/2006		FILL							7,328.0
10/7/2006		FILL							7,297.0