




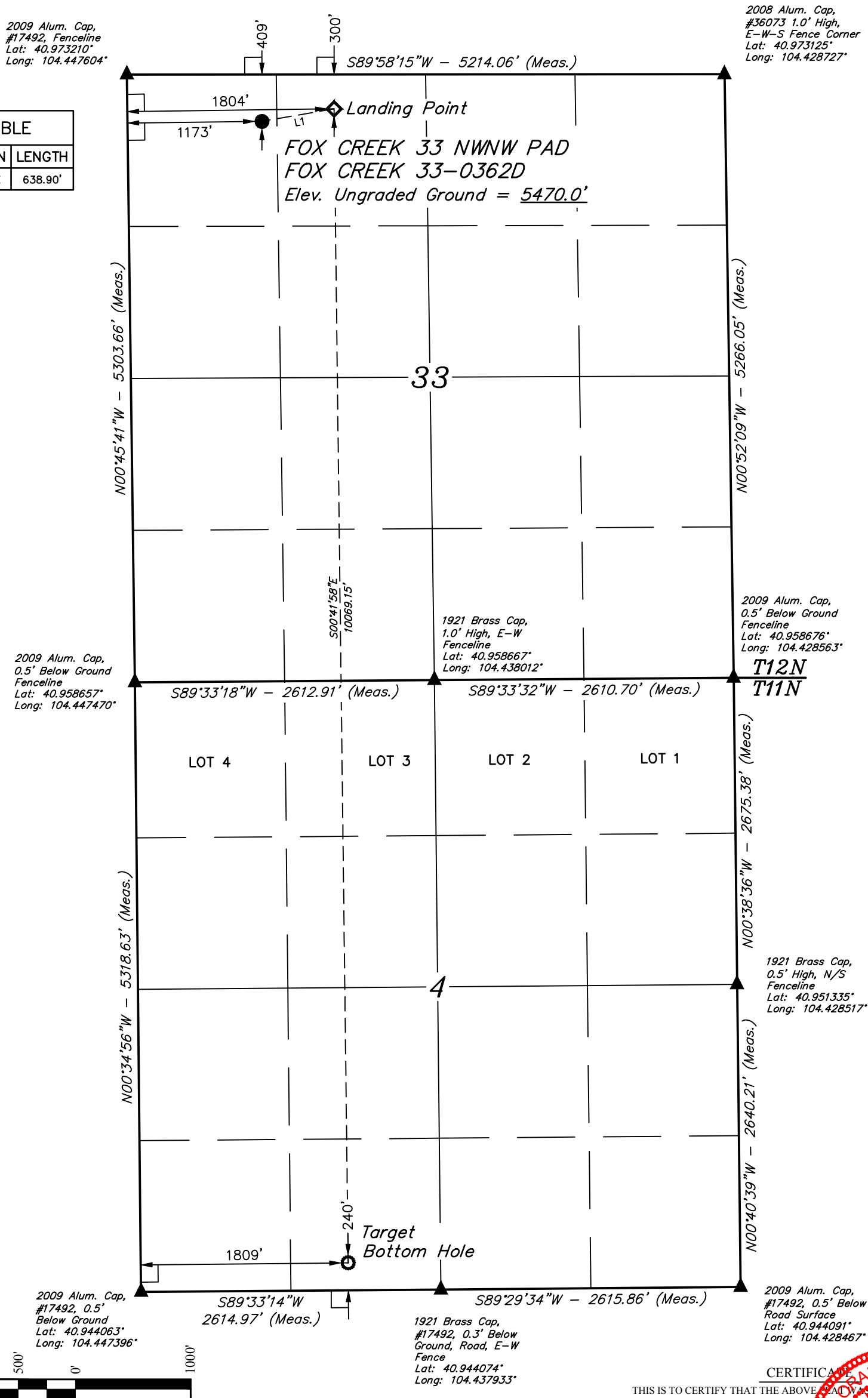


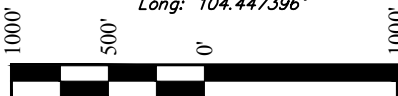
*T12N, R63W, 6th P.M.*

 = 90° SYMBOL  
 = PROPOSED WELLHEAD.  
 = LANDING POINT.  
 = TARGET BOTTOM HOLE.  
 = SECTION CORNERS  
 LOCATED. (NAD 83)

LINE TABLE		
LINE	DIRECTION	LENGTH
L1	N80°11'18"E	638.90'



**PDOP = 1.4**



<b>NAD 83 (SURFACE LOCATION)</b>	<b>NAD 83 (LANDING POINT)</b>	<b>NAD 83 (TARGET BOTTOM HOLE)</b>
LATITUDE = 40°58'19.45" (40.972070°)	LATITUDE = 40°58'20.49" (40.972358°)	LATITUDE = 40°56'41.02" (40.944729°)
LONGITUDE = 104°26'36.05" (104.443346°)	LONGITUDE = 104°26'27.83" (104.441065°)	LONGITUDE = 104°26'27.07" (104.440853°)
<b>NAD 27 (SURFACE LOCATION)</b>	<b>NAD 27 (LANDING POINT)</b>	<b>NAD 27 (TARGET BOTTOM HOLE)</b>
LATITUDE = 40°58'19.51" (40.972087°)	LATITUDE = 40°58'20.55" (40.972375°)	LATITUDE = 40°56'41.09" (40.944746°)
LONGITUDE = 104°26'34.20" (104.442833°)	LONGITUDE = 104°26'25.99" (104.440551°)	LONGITUDE = 104°26'25.22" (104.440340°)
<b>STATE PLANE NAD 83 (CO. NORTH)</b>	<b>STATE PLANE NAD 83 (CO. NORTH)</b>	<b>STATE PLANE NAD 83 (CO. NORTH)</b>
N: 1598718.77' E: 3291798.53'	N: 1598831.11' E: 3292427.33'	N: 1588765.80' E: 3292606.05'
<b>STATE PLANE NAD 27 (CO. NORTH)</b>	<b>STATE PLANE NAD 27 (CO. NORTH)</b>	<b>STATE PLANE NAD 27 (CO. NORTH)</b>
N: 598716.39' E: 2291948.07'	N: 598828.73' E: 2292576.87'	N: 588763.62' E: 2292755.54'

CERTIFICATE

THE ABOVE MAP WAS PREPARED FROM FIELD  
SURVEYS MADE BY ME OR UNDER MY SUPERVISION  
TRUE AND CORRECT TO THE BEST OF MY KNOWLEDGE

*[Signature]* 782285

REGISTERED LAND SURVEYOR  
REGISTRATION NO. 28285  
STATE OF COLORADO

08-25-18

REV: 1    08-28-18    C.IVIE    (LP & BHL MOVE)

**BASIS OF BEARINGS**  
TRANSVERSE MERCATOR PROJECTION WITH  
A CENTRAL MERIDIAN OF  $W105^{\circ}00'00''$ .

**BASIS OF ELEVATION**  
OPUS SOLUTION GENERATED NAVD 88



**UELS, LLC**  
**Corporate Office \* 85 South 200 East**  
**Vernal, UT 84078 \* (435) 789-1017**



## HIGHPOINT OPERATING CORPORATION

**FOX CREEK 33 NWNW PAD  
FOX CREEK 33-0362D  
NW 1/4 NW 1/4, SECTION 33, T12N, R63W, 6th P.M.  
WELD COUNTY, COLORADO**

<b>SURVEYED BY</b>	JAMES FRESHWATER	07-20-18	<b>SCALE</b>
<b>DRAWN BY</b>	C.C.	07-26-18	1" = 1000'

## WELL LOCATION PLAT