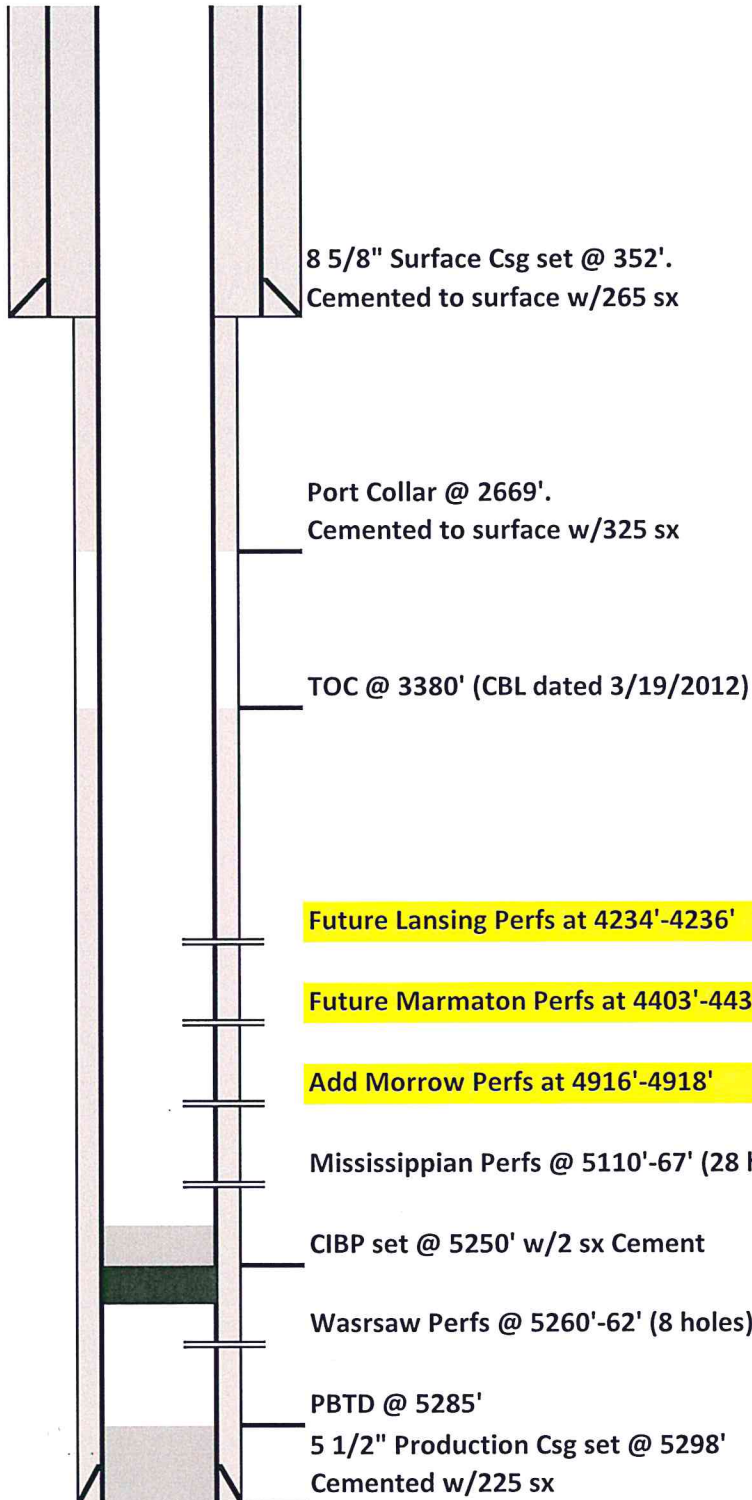




DRILLING COMPANY, INC.
WICHITA, KANSAS

Future Wellbore Diagram - Form 2



Date:	9/10/2018
Well Name:	TSA Unit #1-14
Location:	2150' FNL & 171' FWL
	SW/4 NW/4 14-17S-45W
County:	Kiowa
State:	Colorado
API:	05-061-06869-00
Spud Date:	2/18/2012
Hole Size	12 1/4"
Surface Casing:	Set @ 352' (8 5/8")
Cemented with:	265 sx Common
Production Csg:	Set @ 5298' (5 1/2")
Cemented with:	225 sx OWC