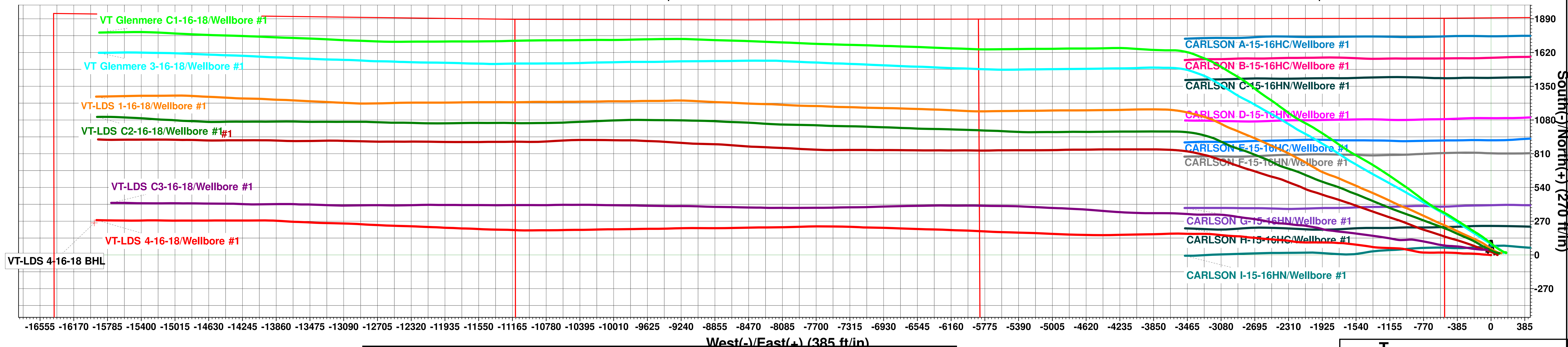




Extraction Oil & Gas  
Project: Weld County, CO (NAD83)  
Site: Vetting PAD (Sec 15-T5N-R65W)  
Well: VT-LDS 4-16-18  
Wellbore: Wellbore #1  
Design: Wellbore #1 (VT-LDS 4-16-18/Wellbore #1)  
Patterson #901

Planned Section Details  
No plan data is available



**WELL DETAILS: VT-LDS 4-16-18**

Ground Elevation:: 4647.00  
RKB Elevation: KB=29 @ 4676.00ft (Patterson #901)  
Rig Name: Patterson #901

Northing	Easting	Latitude	Longitude
1390142.74	3234784.62	40.40128	-104.65697

PROJECT DETAILS: Weld County, CO (NAD83)  
Geodetic System: US State Plane 1983  
Datum: North American Datum 1983  
Ellipsoid: GRS 1980  
Zone: Colorado Northern Zone  
System Datum: Ground Level  
Local North: True

**Compass Rose**

T M  
Azimuths to True North  
Magnetic North: 8.08°  
Magnetic Field  
Strength: 52239.1snT  
Dip Angle: 66.88°  
Date: 7/26/2018  
Model: HDGM

