



**GAMMA RAY C.C.L.
CEMENT BOND V.D.L.**

Company EAST CHEYENNE GAS STORAGE LLC
 Well WP-D005-1
 Field WEST PEETZ
 County LOGAN
 State COLORADO Country US

Company EAST CHEYENNE GAS STORAGE LLC
 Well WP-D005-1
 Field WEST PEETZ
 County LOGAN
 State COLORADO Country US

Location: API #: 05075094100001
 FSL 1062' & FWL 2175'
 SESW

Permanent Datum GL Elevation 4543'
 Log Measured From KB
 Drilling Measured From KELLY BUSHING (14')

SEC 31 TWP 2N RGE 52W

Other Services
 Elevation
 K.B: 4557'
 D.F: 4556'
 G.L: 4543'

| | |
|------------------------|----------------------------|
| Date | 05-OCT-2017 |
| Run Number | ONE |
| Depth Driller | 5274' |
| Depth Logger | 5215' |
| Bottom Logged Interval | 5215' |
| Top Log Interval | 2970' |
| Open Hole Size | 6.125" |
| Type Fluid | WATER |
| Density / Viscosity | 8.34PPG |
| Max. Recorded Temp. | N/A |
| Estimated Cement Top | N/A |
| Time Well Ready | PM |
| Time Logger on Bottom | PM |
| Equipment Number | 34 |
| Recorded By | PLATTEVILLE CO |
| Witnessed By | HAYDEN HILL GARY OHLMAN |

| Borehole Record | | Tubing Record | | | | | |
|-----------------|-----|---------------|----|------|--------|------|----|
| Run Number | Bit | From | To | Size | Weight | From | To |
| | | | | | | | |
| | | | | | | | |
| | | | | | | | |

| | | | | |
|-------------------|--------|--------|---------|--------|
| Casing Record | Size | Wgt/Ft | Top | Bottom |
| Surface String | 9.625" | 36# | SURFACE | 1218" |
| Prod. String | | | | |
| Production String | 4.5" | 11.6# | SURFACE | 5274' |
| Liner | | | | |

<<< Fold Here >>>

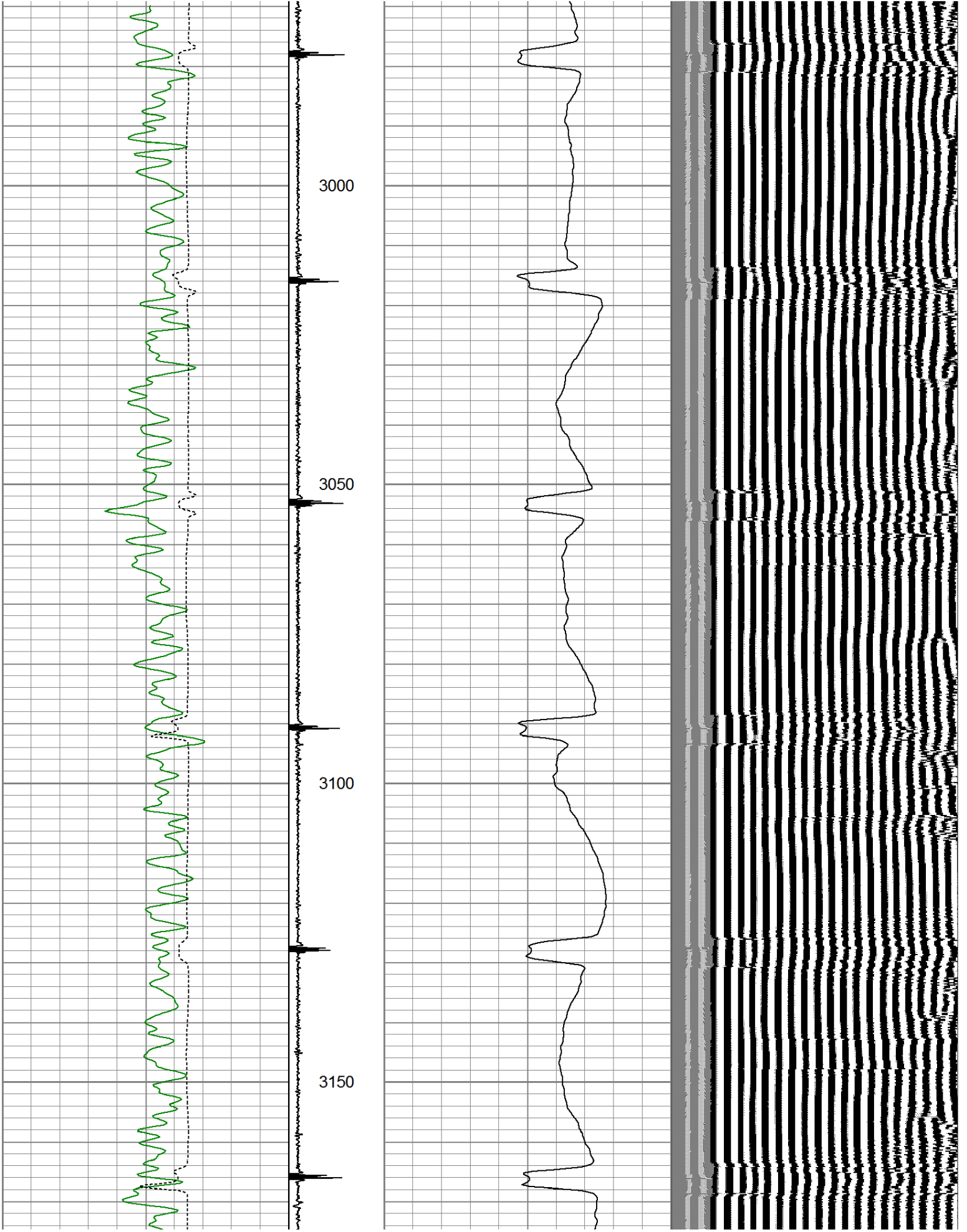
All interpretations are opinions based on inferences from electrical or other measurements and we cannot and do not guarantee the accuracy or correctness of any interpretation, and we shall not, except in the case of gross or willful negligence on our part, be liable or responsible for any loss, costs, damages, or expenses incurred or sustained by anyone resulting from any interpretation made by any of our officers, agents or employees. These interpretations are also subject to our general terms and conditions set out in our current Price Schedule.

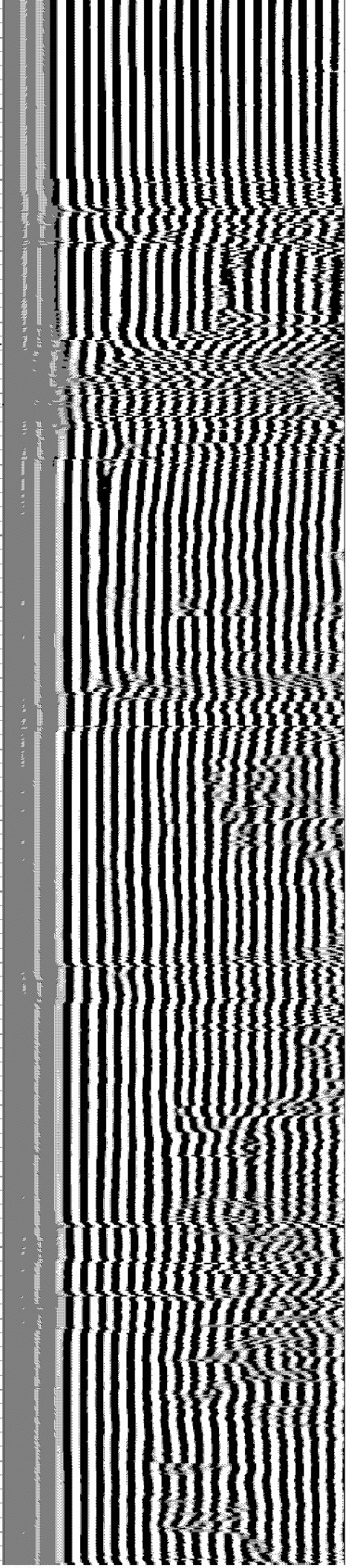
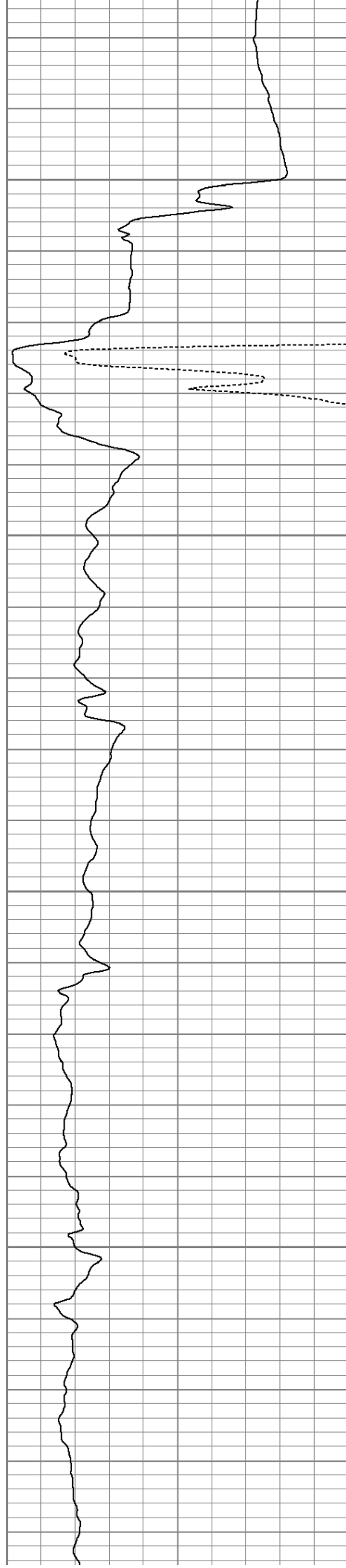
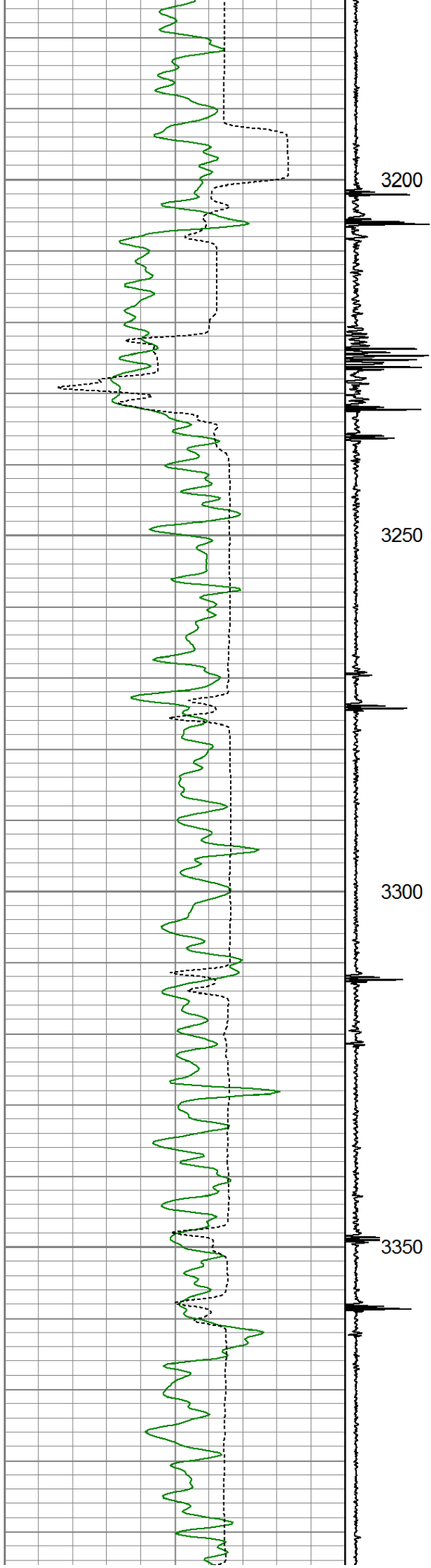
Comments

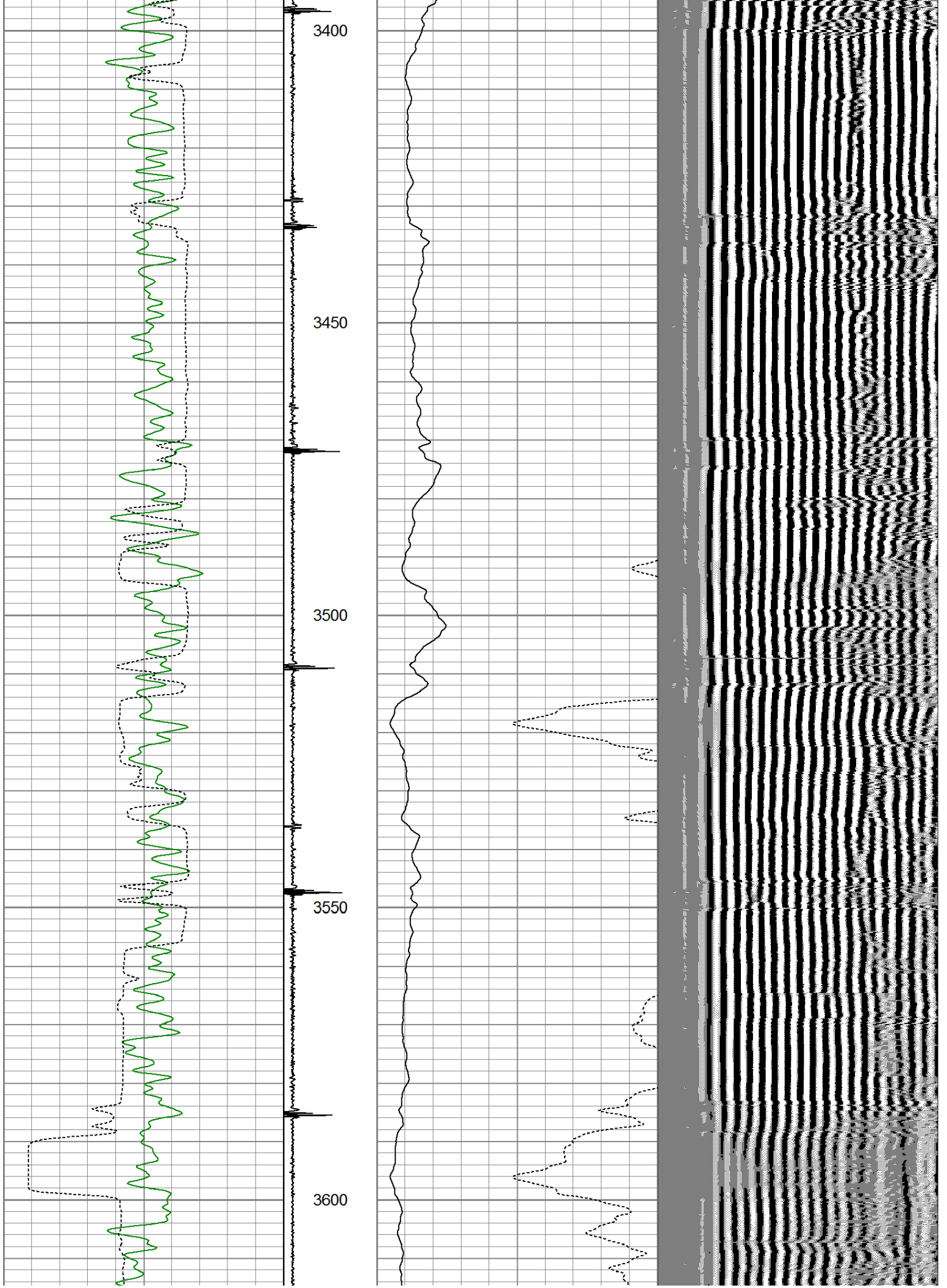
THANK YOU FOR USING KLX ENERGY SERVICES
 LOG CORRECTED BACK TO KLX CEMENT VDL LOG DATED OCT 3, 2017

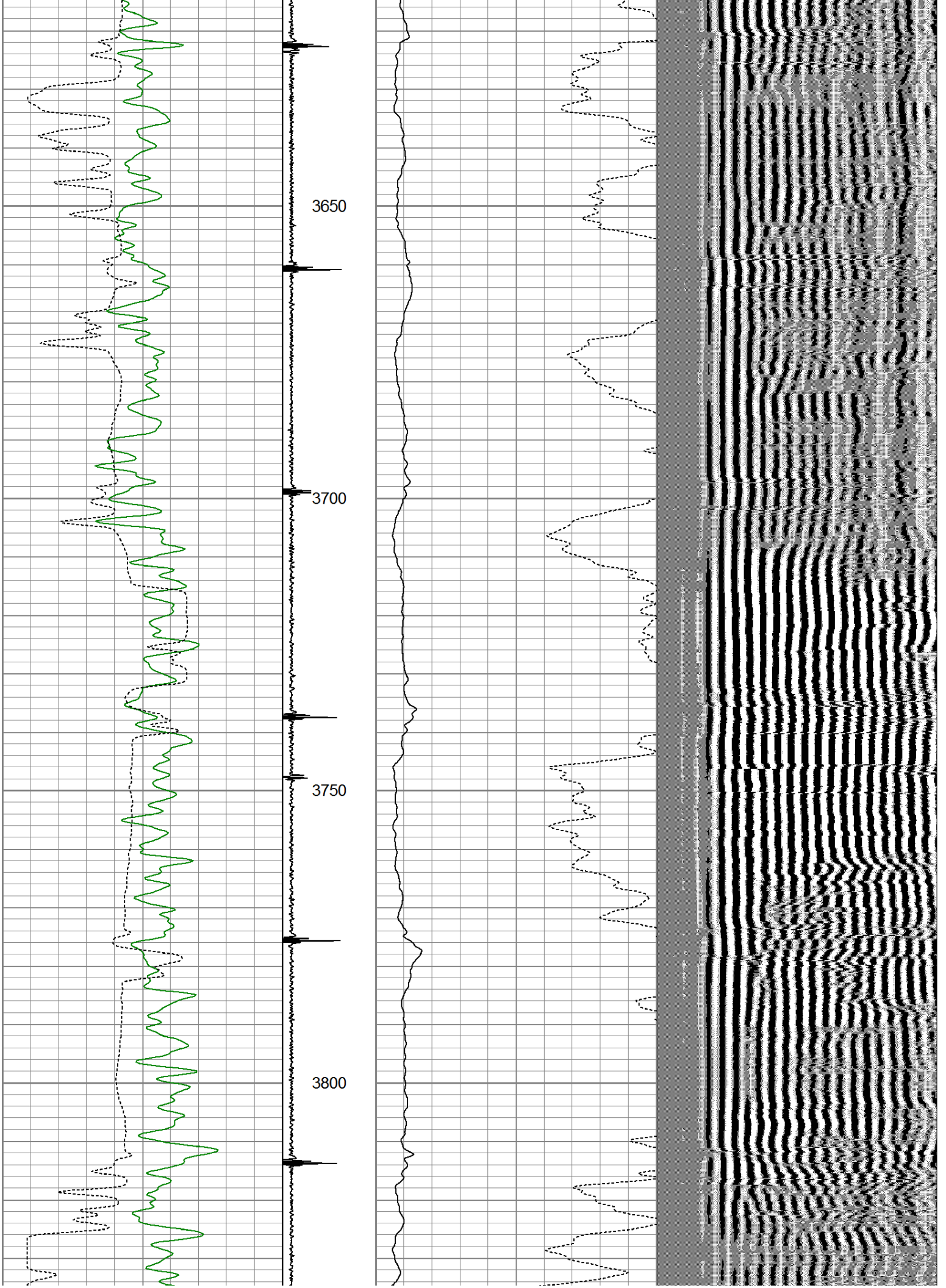
Database File: wp-d005-1.db
 Dataset Pathname: pass1
 Presentation Format: cbl_drs_
 Dataset Creation: Thu Oct 05 14:31:02 2017 by Log Std Casedhole 10081
 Charted by: Depth in Feet scaled 1:240

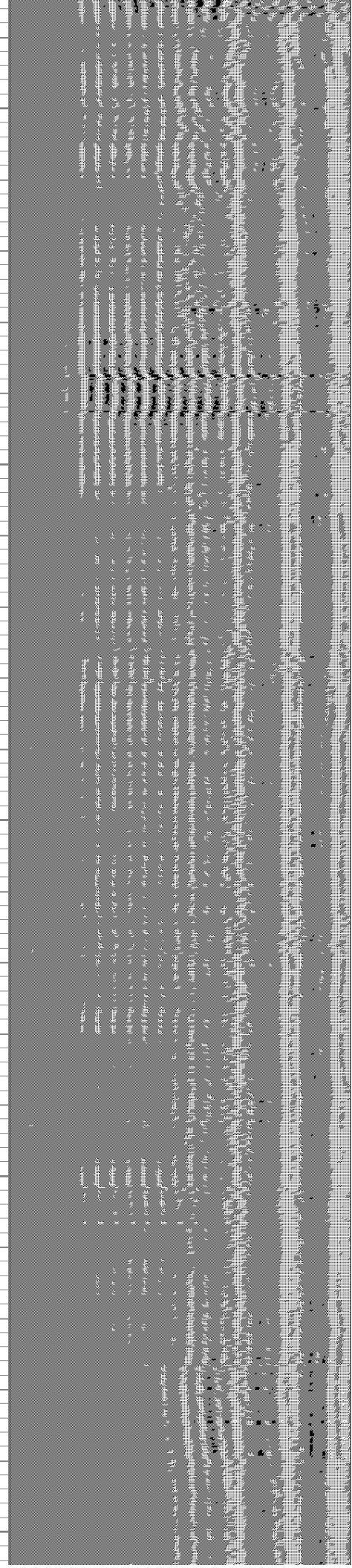
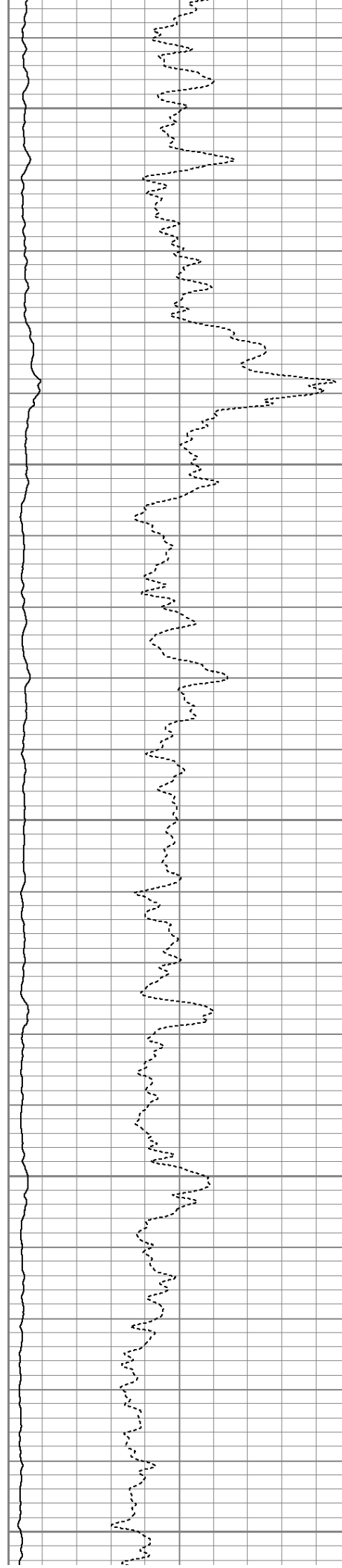
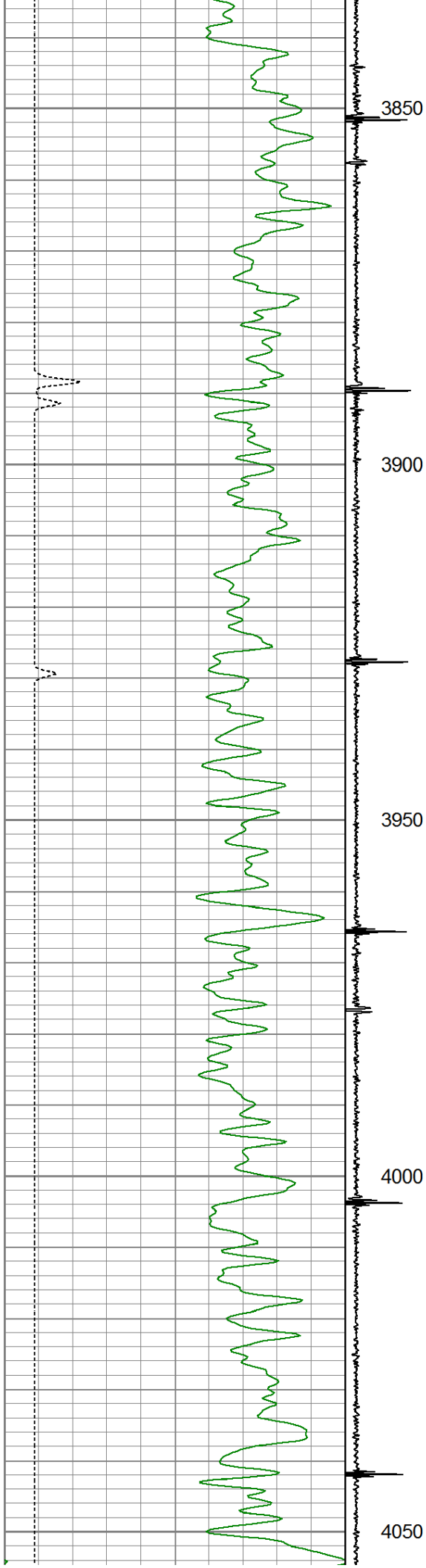
| | | | | | | | | | |
|-----|------------------|-----|----------------|-----|--------------------|-----|-----|-----|------|
| 0 | Gamma Ray (GAPI) | 150 | Collar Locator | 0 | AMP AMPLITUDE (mV) | 10 | 200 | VDL | 1200 |
| 400 | TT3FT (usec) | 200 | -1 | 9 0 | AMPLITUDE (mV) | 100 | | | |

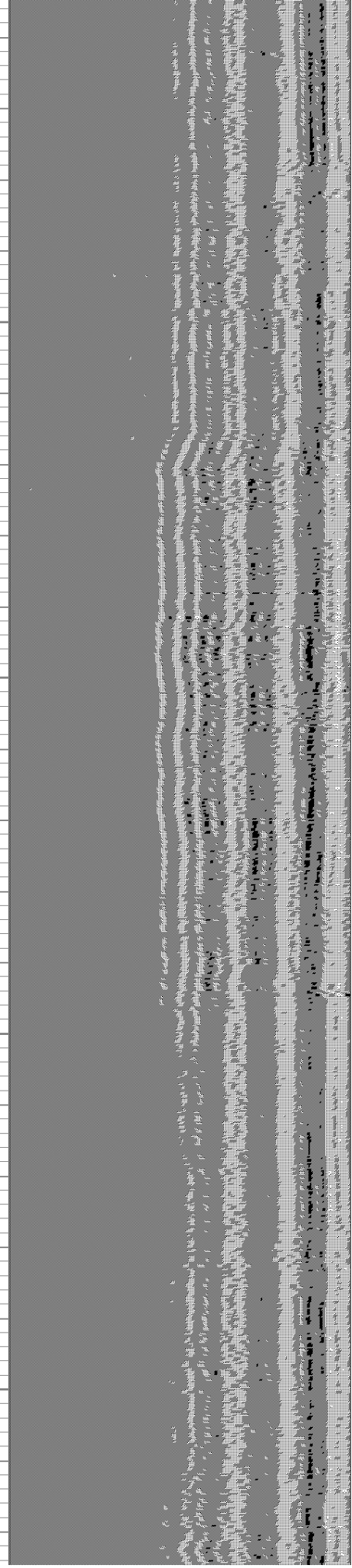
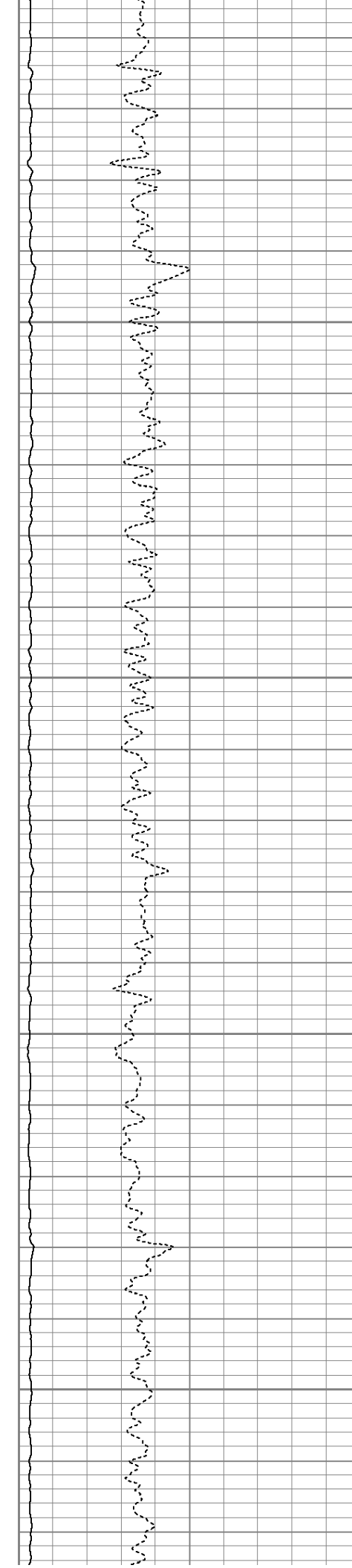
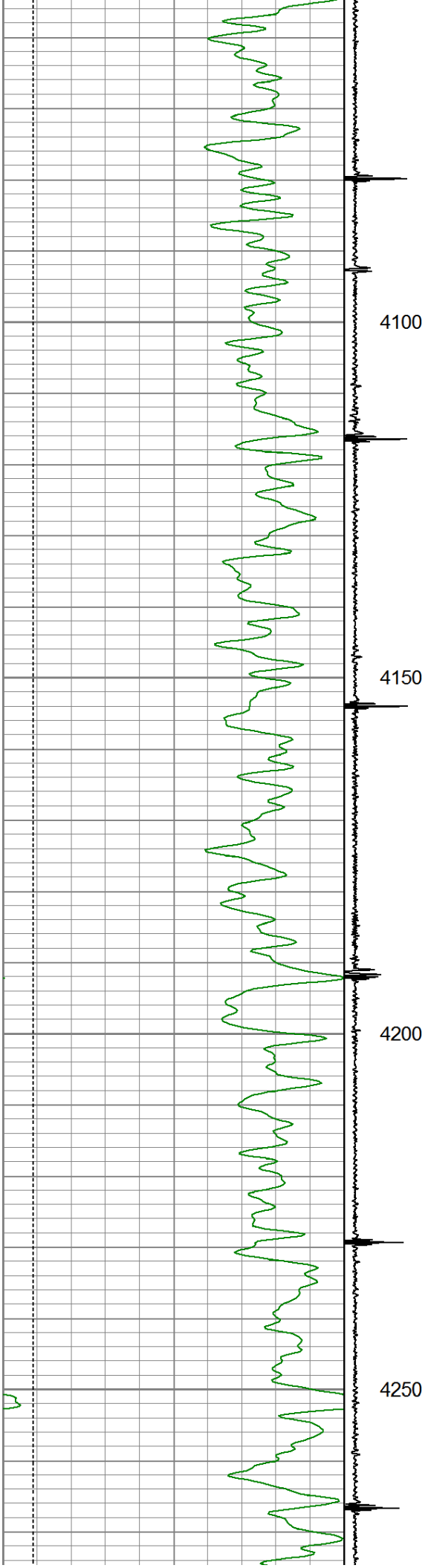


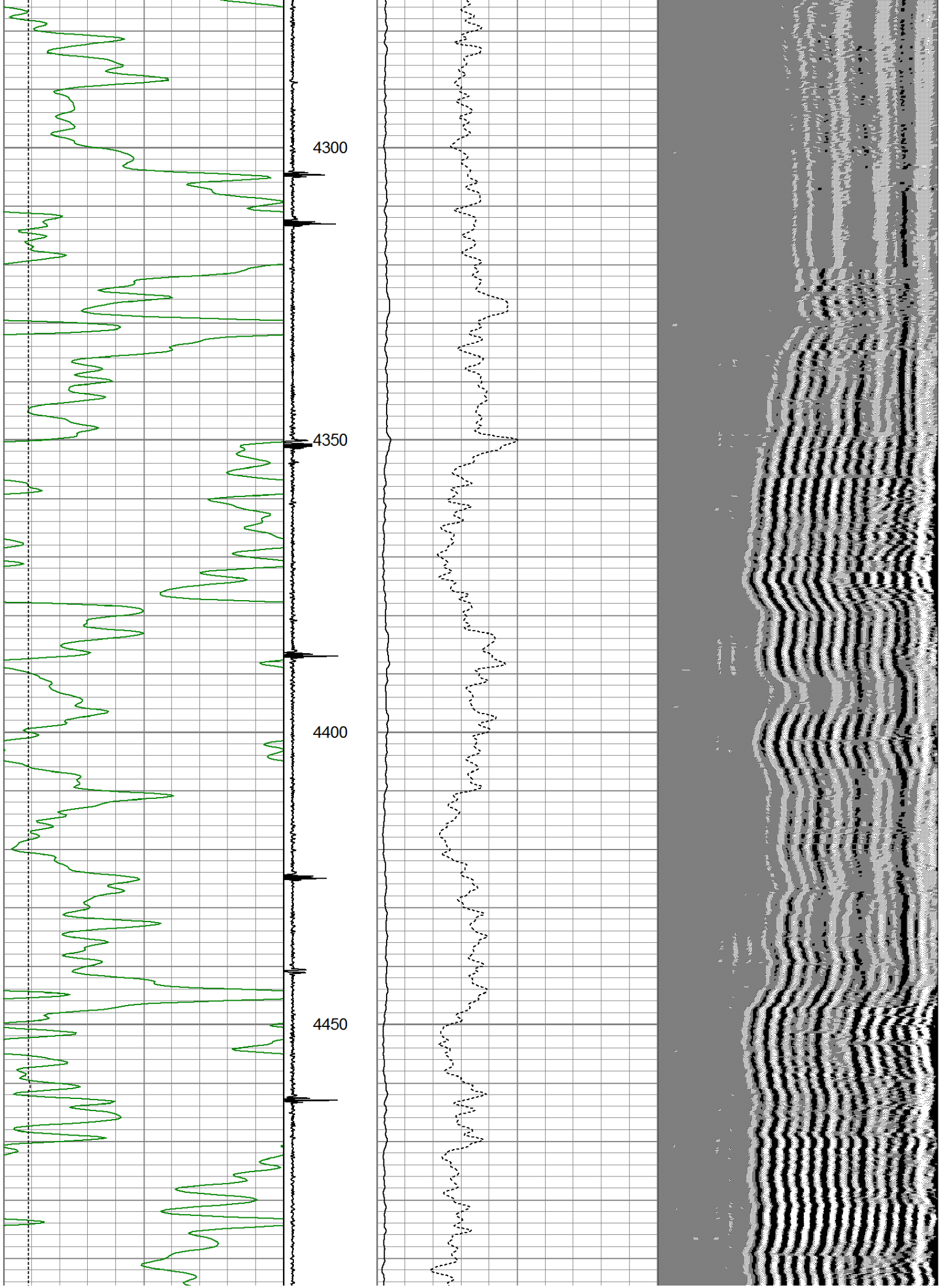


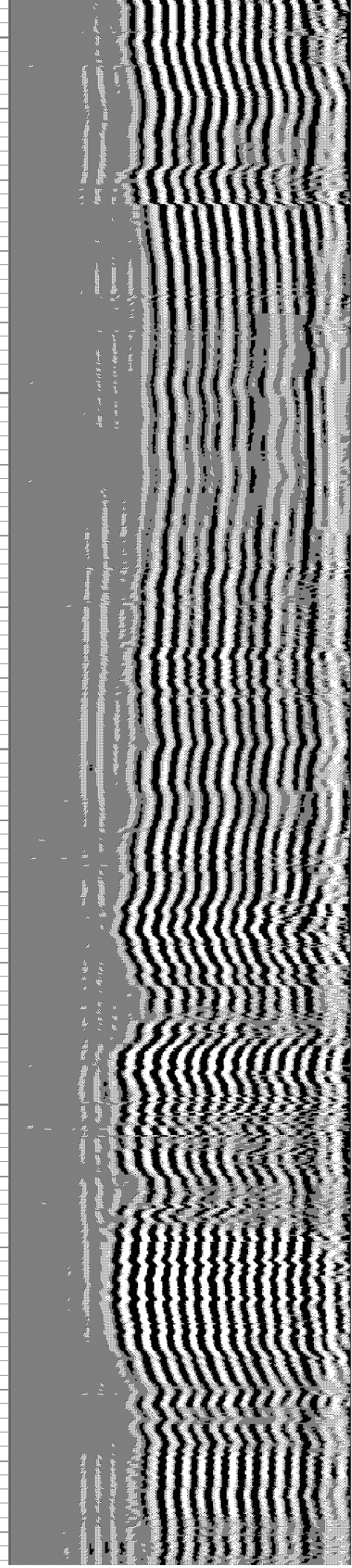
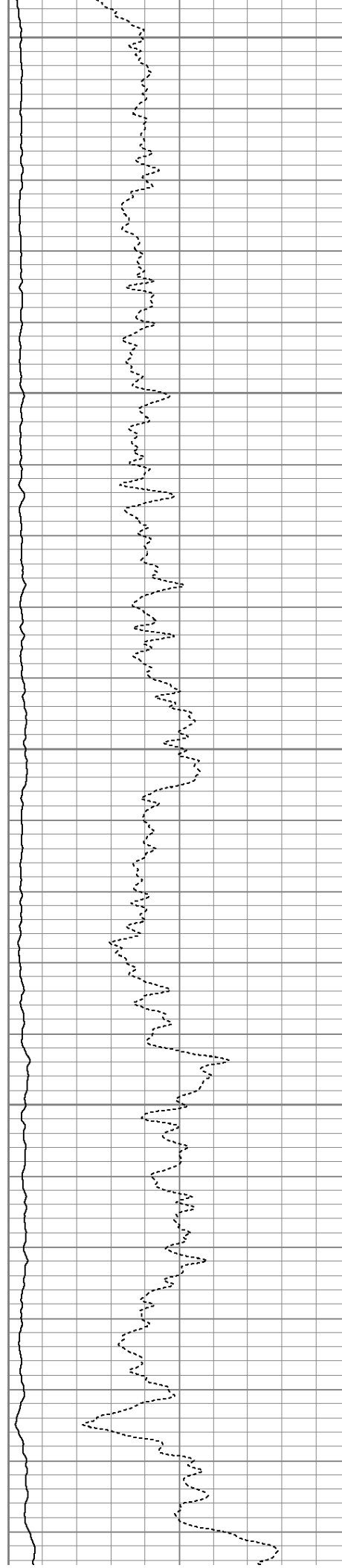
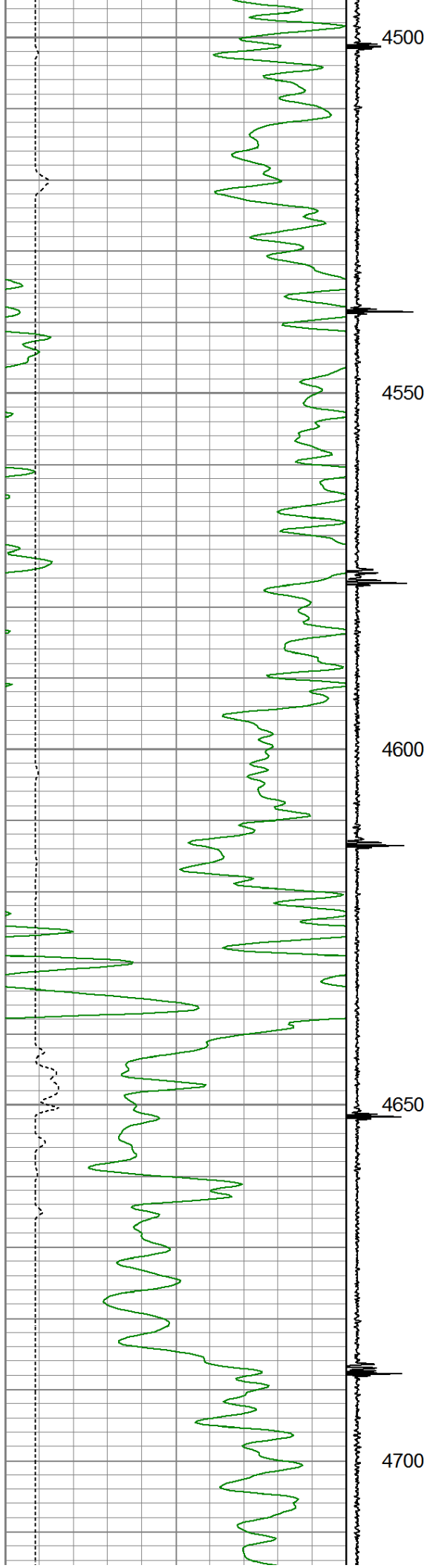


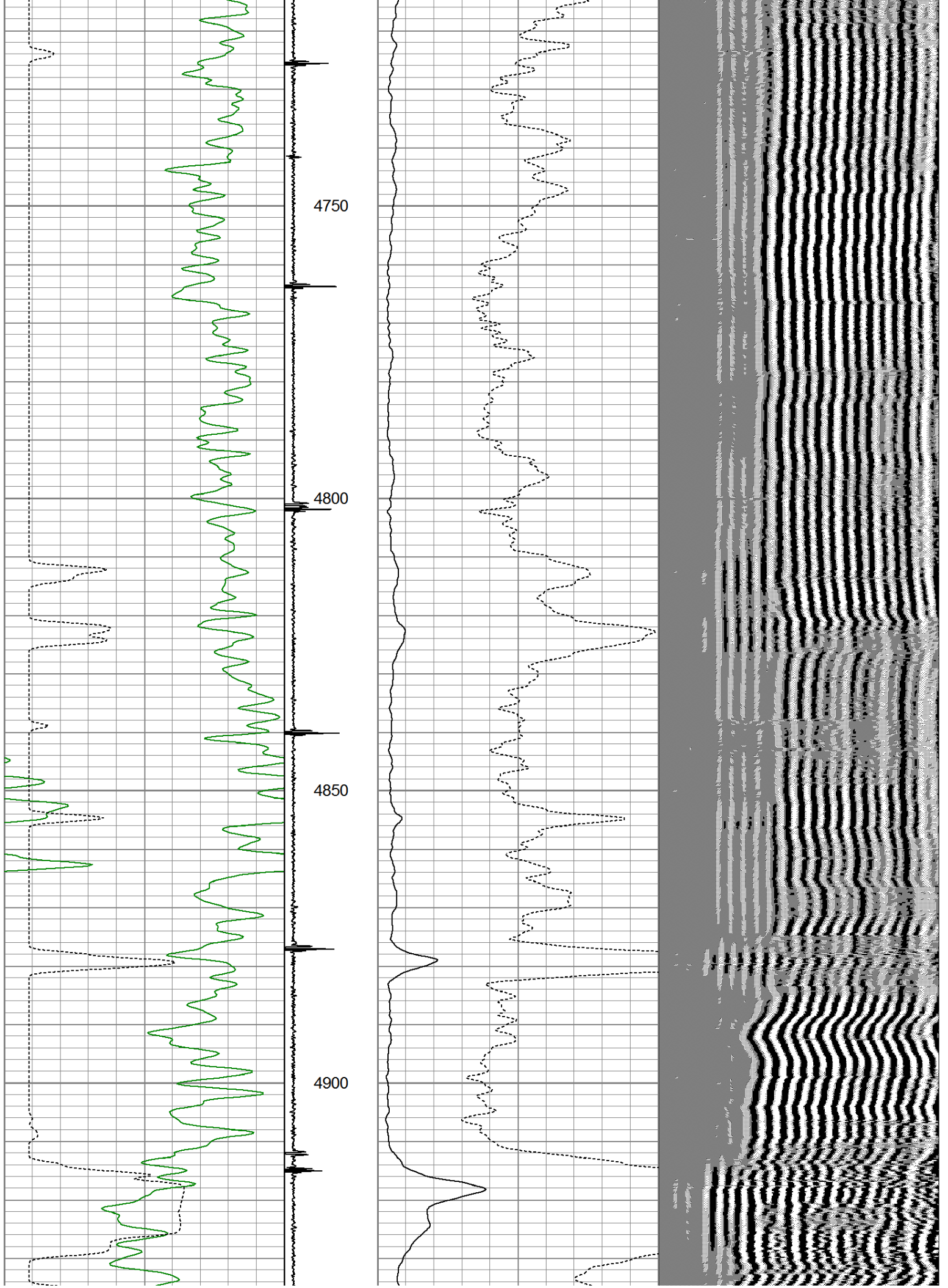


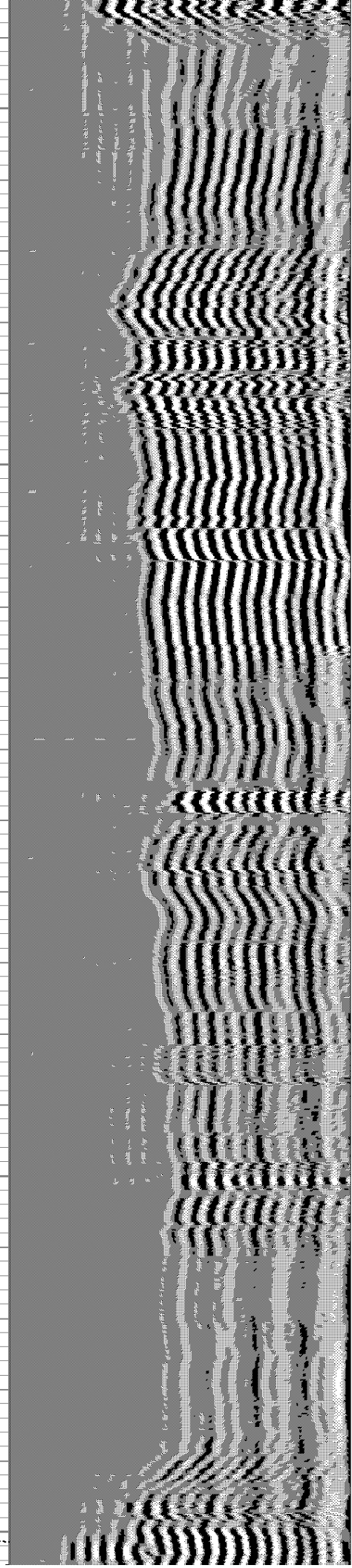
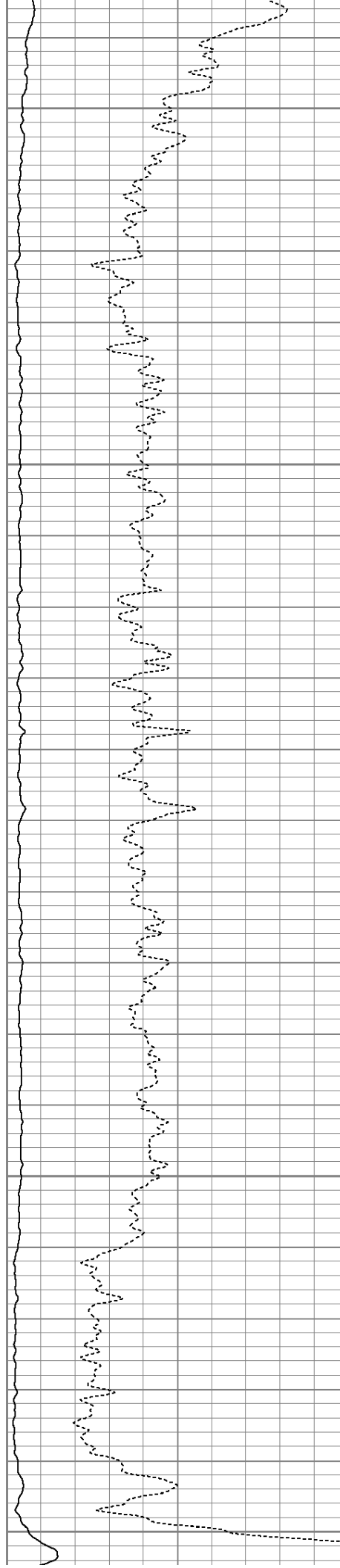
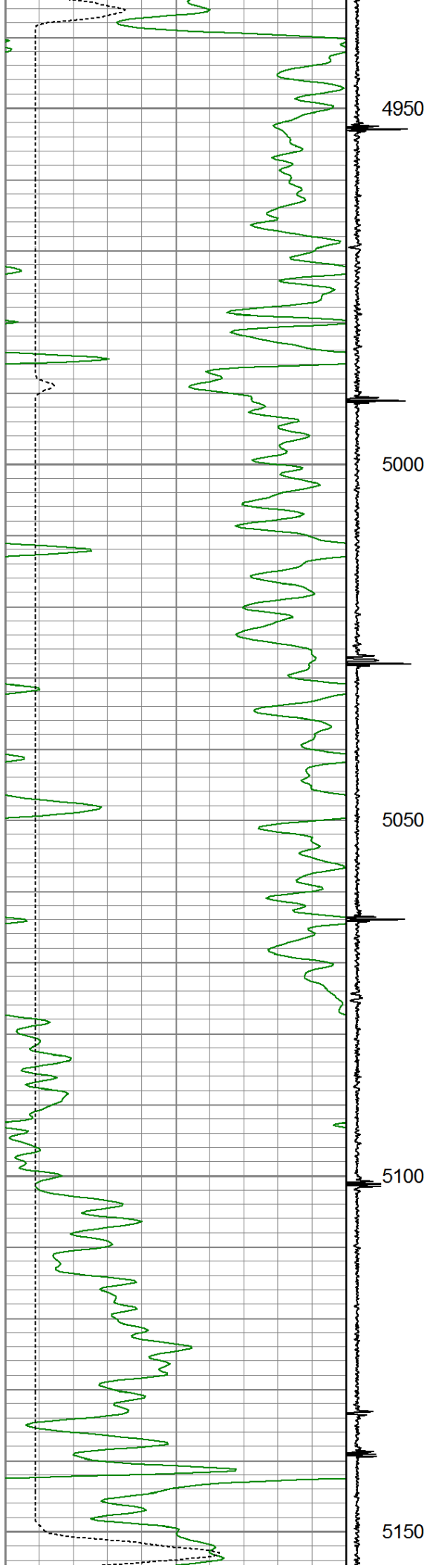


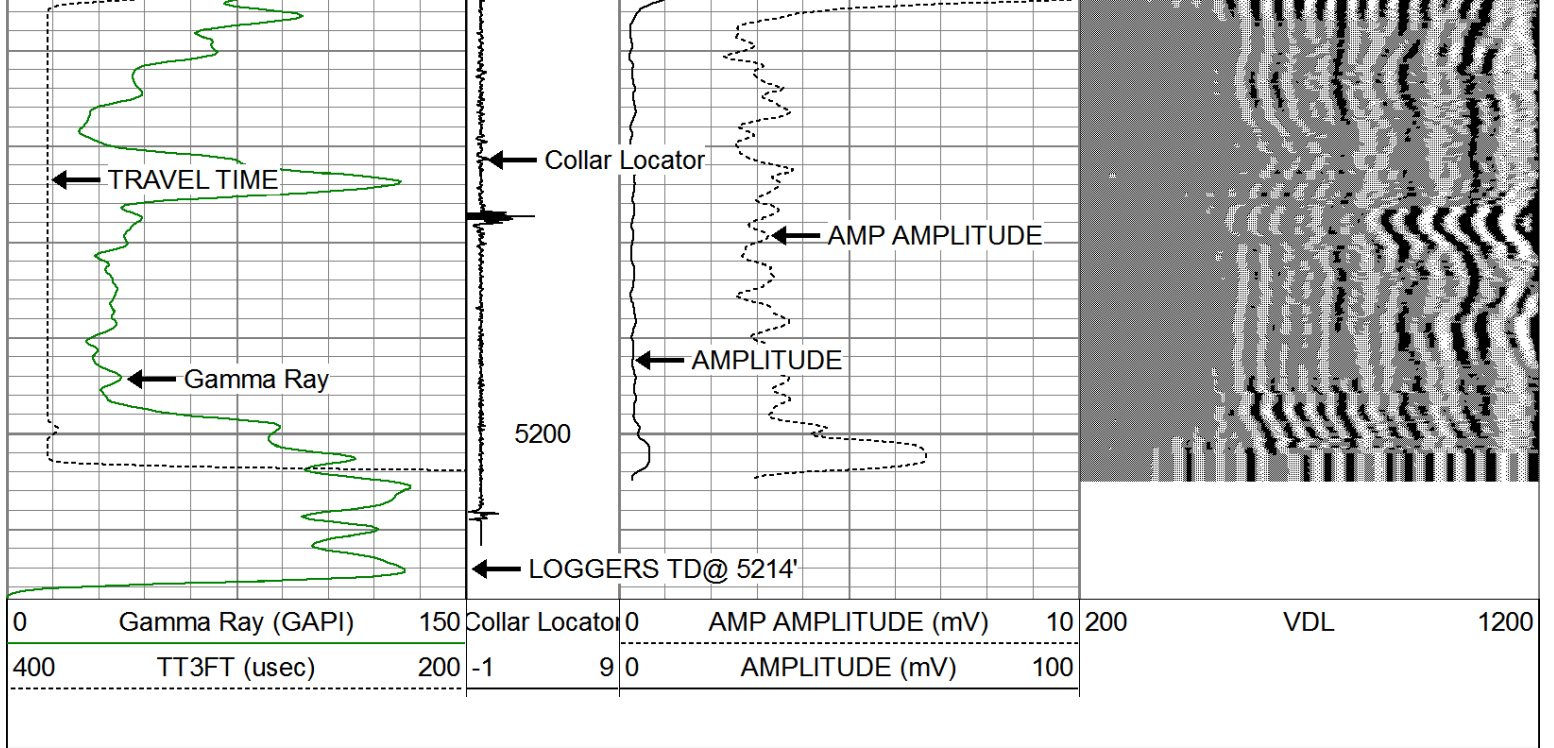













| Sensor | Offset (ft) | Schematic | Description | Len (ft) | OD (in) | Wt (lb) | |
|--------|-------------|-----------|----------------------------------|--|---------|---------|-------|
| | | | 1.4375 Titan 1 7/16 Cablehead | 1.50 | 1.44 | 2.00 | |
| | | | PTS275 | 2.83 | 2.75 | | |
| WVF3FT | 13.53 | | | RBT-Probe (080835) Probe Radii Bond Tool with Digital Telemetry | 8.92 | 2.75 | 90.00 |
| WVFCAL | 13.53 | | | | | | |
| WVFS1 | 13.53 | | | | | | |
| WVFS2 | 13.53 | | | | | | |
| WVFS3 | 13.53 | | | | | | |
| WVFS4 | 13.53 | | | | | | |
| WVFS5 | 13.53 | | | | | | |
| WVFS6 | 13.53 | | | | | | |
| WVFS7 | 13.53 | | | | | | |
| WVFS8 | 13.53 | | | | | | |
| WVF5FT | 12.44 | | | | | | |
| | | | PTS275 | 2.83 | 2.75 | | |

| | | | | | | |
|-----|------|--|--|------|------|-------|
| CCL | 5.44 |  | GR-Probe275dig (080832) Probe 2.75 High Temperature | 6.36 | 2.75 | 57.00 |
| GR | 1.42 | | | | | |
| | | Dataset: wp-d005-1.db: field/well/run1/pass1 Total Length: 22.44 ft Total Weight: 149.00 lb O.D.: 2.75 in | | | | |