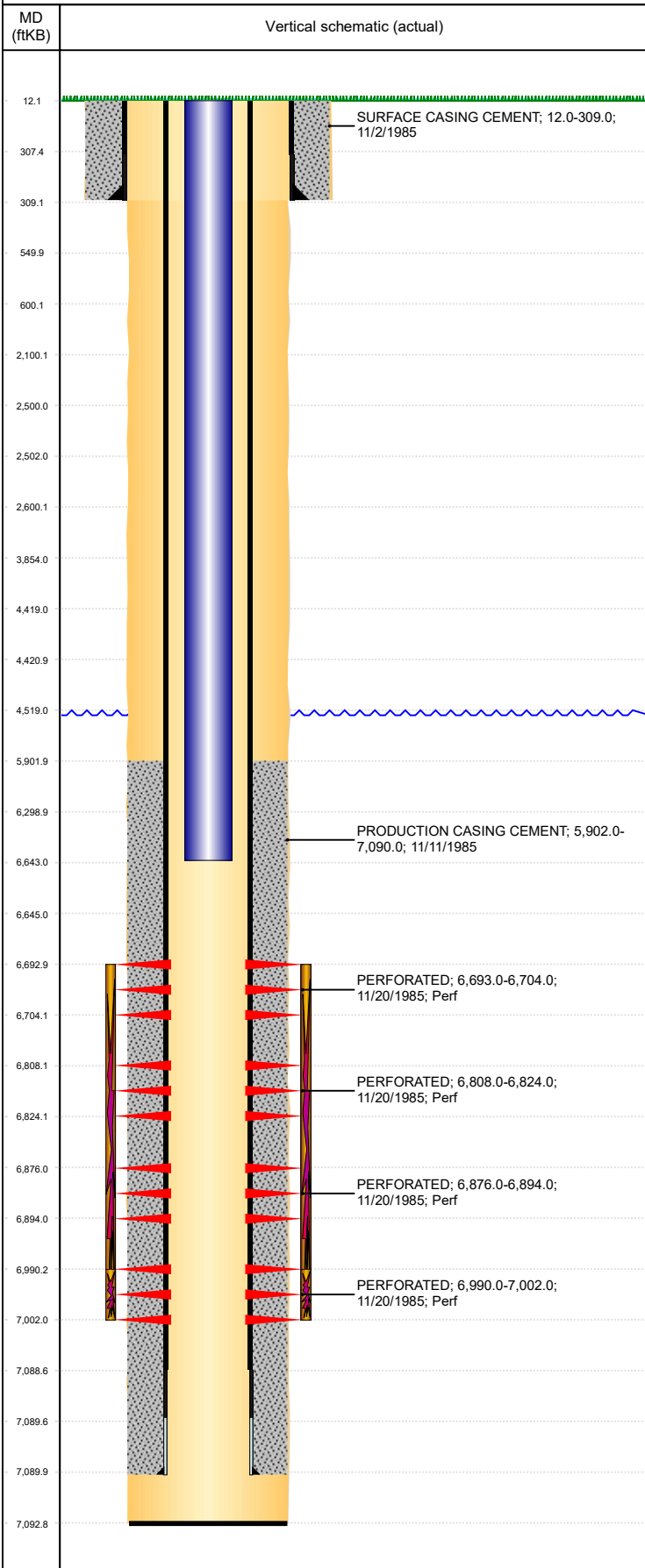


**Well Name: KINDVALL 2-35**

VERTICAL - ORIGINAL HOLE, 10/4/2018 7:07:26 AM



Well Header									
API 05-123-12734		Business Unit DJ BASIN			District 15		Well Config VERTICAL		
KB - GL / MSL (ft... 12.00		Spud Date 11/2/1985		P & A Date		Well Production Status PR			SoRT No
Comment LIMITED ENTRY PLUG BACK TD INCORRECT 6948' ON FORM 5 WHICH WOULD BE ABOVE CODELL PERFS. NO CURRENT PLUG BACK TD DISCREPANCY: SURF CSG SET DEPTH- ST 312', WELL STATUS SHEET 309'; PROD CSG SET DEPTH- ST 6988' BUT ABOVE CD PERFS, 7090' PREV ENTERED IN WV.									
Surface Location (Congressional)									
Qtr 3 NW	Qtr 4 NE	Section 35	Twonshp 5	Twonsh... N	Range 65	Rng E/... W	Actual Latitude (°) 40.36112090	Actual Longitude (°) -104.62809680	
Wellbore Sections									
Section Des			Size (in)			Act Top, MD (ftKB)		Act Btm, MD (ftKB)	
SURFACE			12 1/4			12		309	
PRODUCTION			7 7/8			309		7,093	
Casing Strings									
Csg Des		Run Date		OD (in)	Wt/Len (lb/ft)	Grade	Top, MD (ftKB)	MD (ftKB)	
Surface		11/2/1985		8 5/8	24.00		12.0	309.0	
Production		11/11/1985		4 1/2	11.60	FS-70	12.0	7,090.0	
Cement									
Des				Start Date		Top (ftKB)		Btm (ftKB)	
SURFACE CASING CEMENT				11/2/1985		12.0		309.0	
PRODUCTION CASING CEMENT				11/11/1985		5,902.0		7,090.0	
Zone Statuses									
Zone Name	Status Date	Status	Fluid Type	Job				Prod Method	
NIOBRARA	2/13/1986	PR		DRILLING/COMPLETION - ORIGINAL, 11/2/1985...				Flowing	
CODELL	2/13/1986	PR		DRILLING/COMPLETION - ORIGINAL, 11/2/1985...				Flowing	
CODELL	1/22/2002	PR		RE-FRAC, 12/12/2001 00:00				Flowing	
Perforation Data									
Linked Zone		Bnch/Stg	Entered Shot Total	Top (ftKB)		Btm (ftKB)		Date	
NIOBRARA, ORIGINAL HOLE		A	2	6,693.00		6,704.00		11/20/1985	
NIOBRARA, ORIGINAL HOLE		B	4	6,808.00		6,824.00		11/20/1985	
NIOBRARA, ORIGINAL HOLE		C	3	6,876.00		6,894.00		11/20/1985	
CODELL, ORIGINAL HOLE			5	6,990.00		7,002.00		11/20/1985	
Stimulation Intervals									
Zone			Start Date			Top (ftKB)		Btm (ftKB)	
			11/25/1985			6,693.0		7,002.0	
CODELL, ORIGINAL HOLE			12/12/2001			6,990.0		7,002.0	
Other In Hole									
Run Date		Des				OD (in)	Top (ftKB)	Btm (ftKB)	
Logs									
Date		Type				Top, MD (ftKB)		Btm, MD (ftKB)	
11/9/1985		COMPENSATED DENSITY				3,600.0		7,090.0	
11/9/1985		INDUCTION				312.0		7,087.0	
11/9/1985		LITHOLOGY CYBERLOOK				5,950.0		7,060.0	
11/20/1985		CEMENT BOND				309.0		6,988.0	
Plug Back Total Depths									
Date		Type		Com				Depth (ftKB)	
11/11/1985		FLOAT COLLAR		PLUG BACK TD INCORRECT 6948' ON FORM 5 WHICH WOU...					
11/20/1985		FILL		DEPTH LOGGER ON CBL DEPTH BASED OFF OF THREE LO...				7,093.0	