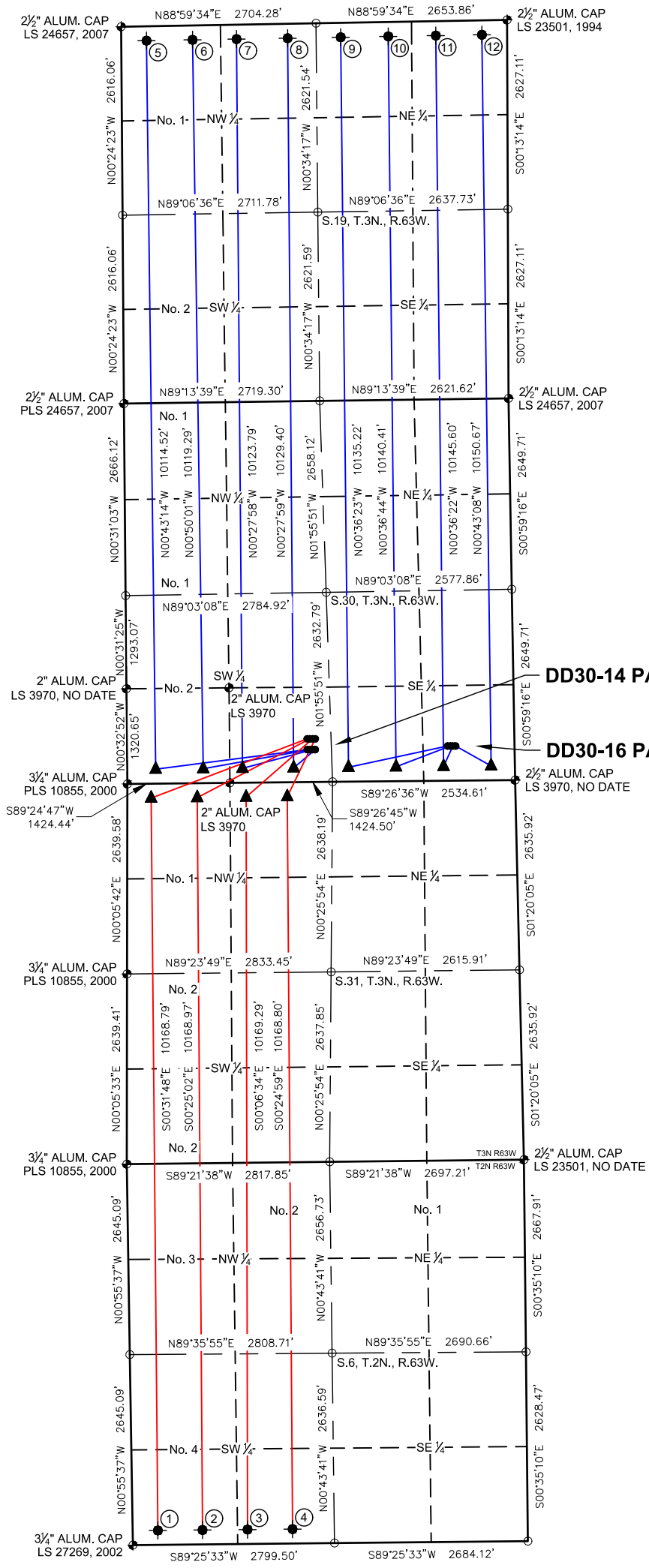
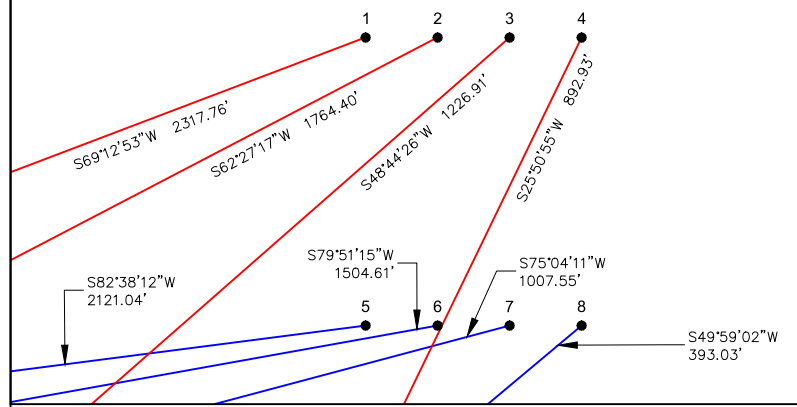


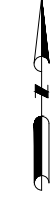
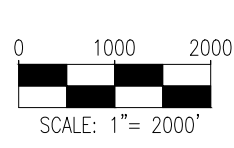
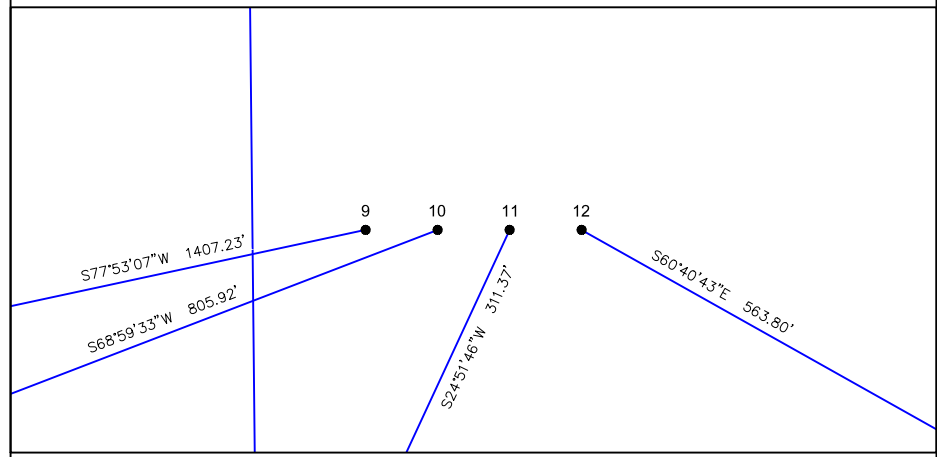
DD30-14 PAD & DD30-16 PAD MULTI-WELL LOCATION PLAT / MULTI-WELL PLAN T3N R63W SECTION 30



PROPOSED WELLBORE DIRECTION DATA DD30-14 PAD SLOTS 1-8



PROPOSED WELLBORE DIRECTION DATA DD30-16 PAD SLOTS 9-12



LEGEND

- = FOUND MONUMENT
- = CALCULATED POSITION
- = PROPOSED WELL
- = BOTTOM HOLE
- = LANDING POINT

- Notes:**
- 1) All bearings are Grid Bearings of the Colorado State Plane Coordinate System, North Zone, North American Datum 1983/2011. The lineal dimensions as shown herein are grid distances based upon the "U.S. Survey Foot." To get ground distances multiply shown distance by 1.0002739557.
 - 2) Distances are measured at 90° from section line of the Sixth Principal Meridian, County of Weld, State of Colorado.
 - 3) Ground elevations are based on an observed GPS elevation (NAVD 1988 DATUM).
 - 4) Surface use: "RANGELAND"
 - 5) Instrument Operator: Ian Carabajal
 - 6) This map does not represent a boundary survey.

DISCLAIMER:
THIS PLOT DOES NOT REPRESENT A MONUMENTED LAND SURVEY AND SHOULD NOT BE RELIED UPON TO DETERMINE BOUNDARY LINES, PROPERTY OWNERSHIP OR OTHER PROPERTY INTERESTS. PARCEL LINES, IF DEPICTED HAVE NOT BEEN FIELD VERIFIED AND MAY BE BASED UPON PUBLICLY AVAILABLE DATA THAT ALSO HAS NOT BEEN INDEPENDENTLY VERIFIED.

SLOT	WELL NAME	LATITUDE	LONGITUDE	SURFACE HOLE LOCATION			QTR-QTR	ELEV.	TOP OF PRODUCTIVE ZONE		BOTTOM HOLE LOCATION	
				FOOTAGE	FOOTAGE	FOOTAGE			FOOTAGE	FOOTAGE	FOOTAGE	
1	GUTTERSEN YY06-785	40.19080°N	104.48140°W	601' FSL	2502' FWL	SESW	4791'	200' FNL	330' FWL	200' FSL	350' FWL	
2	GUTTERSEN YY06-775	40.19080°N	104.48126°W	601' FSL	2540' FWL	SESW	4791'	200' FNL	970' FWL	200' FSL	970' FWL	
3	GUTTERSEN YY06-766	40.19080°N	104.48113°W	600' FSL	2577' FWL	SESW	4790'	200' FNL	1650' FWL	200' FSL	1595' FWL	
4	GUTTERSEN YY06-756	40.19079°N	104.48099°W	600' FSL	2615' FWL	SESW	4790'	200' FNL	2220' FWL	200' FSL	2220' FWL	
5	GUTTERSEN STATE DD30-785	40.19039°N	104.48140°W	451' FSL	2501' FWL	SESW	4794'	200' FSL	395' FWL	200' FNL	350' FWL	
6	GUTTERSEN STATE DD30-775	40.19039°N	104.48127°W	450' FSL	2538' FWL	SESW	4794'	200' FSL	1055' FWL	200' FNL	990' FWL	
7	GUTTERSEN STATE DD30-766	40.19038°N	104.48113°W	450' FSL	2576' FWL	SESW	4793'	200' FSL	1600' FWL	200' FNL	1600' FWL	
8	GUTTERSEN STATE DD30-755	40.19038°N	104.48100°W	450' FSL	2613' FWL	SESW	4793'	200' FSL	2310' FWL	200' FNL	2310' FWL	
9	GUTTERSEN STATE DD30-745	40.19046°N	104.47442°W	482' FSL	929' FEL	SESE	4823'	200' FSL	2310' FEL	200' FNL	2310' FEL	
10	GUTTERSEN STATE DD30-735	40.19046°N	104.47429°W	482' FSL	892' FEL	SESE	4823'	200' FSL	1649' FEL	200' FNL	1650' FEL	
11	GUTTERSEN STATE DD30-725	40.19046°N	104.47416°W	481' FSL	854' FEL	SESE	4823'	200' FSL	990' FEL	200' FNL	990' FEL	
12	GUTTERSEN STATE DD30-715	40.19046°N	104.47402°W	481' FSL	817' FEL	SESE	4823'	200' FSL	330' FEL	200' FNL	350' FEL	

ASCENT
GEOMATICS SOLUTIONS
7535 Hilltop Circle
Denver, CO 80221
(303) 928-7128
www.ascentgeomatix.com

FIELD DATE: 08-02-18
DRAWING DATE: 08-20-18
DRAWN BY: VQD
CHECKED BY: CLP

SURFACE LOCATION:
SEC. 30, T3N, R63W, 6TH P.M.
WELD COUNTY, COLORADO

PUBLICLY AVAILABLE DATA SOURCES HAVE NOT BEEN INDEPENDENTLY VERIFIED BY ASCENT.

