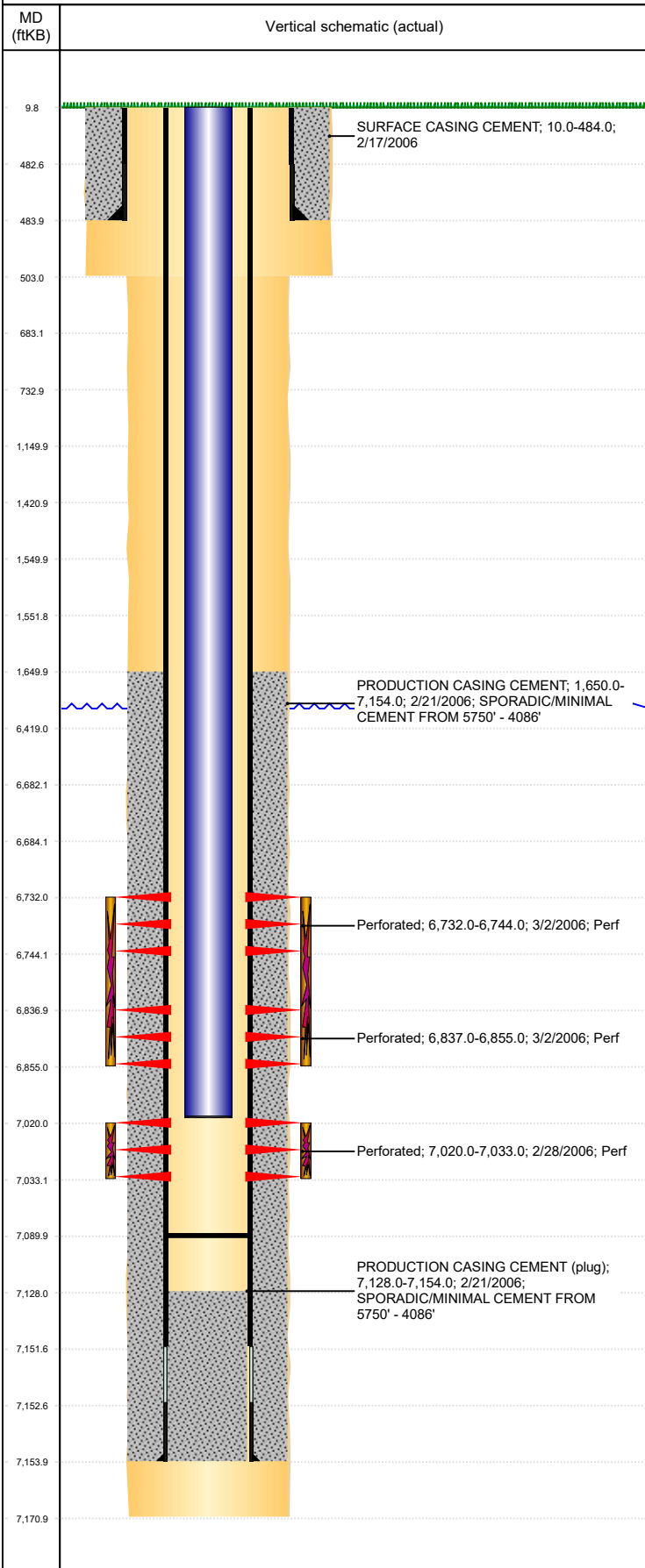


**Well Name: GEMINI B31-19**

VERTICAL - ORIGINAL HOLE, 10/3/2018 2:48:45 PM



Well Header									
API 05-123-23616			Business Unit DJ BASIN			District 15		Well Config VERTICAL	
KB - GL / MSL (ft... 10.00		Spud Date 2/17/2006		P & A Date		Well Production Status PR			SoRT No
Comment									
Surface Location (Congressional)									
Qtr 3	Qtr 4	Section	Twnshp	Twnsh...	Range	Rng E...	Actual Latitude (°)	Actual Longitude (°)	
C	NW	31	5	N	64	W	40.35954574	-104.59728694	
Wellbore Sections									
Section Des			Size (in)			Act Top, MD (ftKB)		Act Btm, MD (ftKB)	
SURFACE			12 1/4			10		503	
PRODUCTION			7 7/8			503		7,171	
Casing Strings									
Csg Des			Run Date		OD (in)	Wt/Len (lb/ft)	Grade	Top, MD (ftKB)	MD (ftKB)
Surface			2/17/2006		8 5/8	24.00	J-55	10.0	484.0
Production			2/21/2006		4 1/2	11.60	M-80	10.0	7,154.0
Cement									
Des					Start Date		Top (ftKB)		Btm (ftKB)
SURFACE CASING CEMENT					2/17/2006		10.0		484.0
PRODUCTION CASING CEMENT					2/21/2006		1,650.0		7,154.0
Zone Statuses									
Zone Name	Status Date	Status	Fluid Type	Job				Prod Method	
CODELL	3/4/2006	PR		DRILLING/COMPLETION - ORIGINAL, 12/17/200...				Flowing	
NIOBRARA	3/4/2006	PR		DRILLING/COMPLETION - ORIGINAL, 12/17/200...				Flowing	
Perforation Data									
Linked Zone		Bnch/Stg	Entered Shot Total	Top (ftKB)		Btm (ftKB)		Date	
NIOBRARA, ORIGINAL HOLE			72	6,732.00		6,744.00		3/2/2006	
NIOBRARA, ORIGINAL HOLE			108	6,837.00		6,855.00		3/2/2006	
CODELL, ORIGINAL HOLE			52	7,020.00		7,033.00		2/28/2006	
Stimulation Intervals									
Zone			Start Date			Top (ftKB)		Btm (ftKB)	
NIOBRARA, ORIGINAL HOLE			3/2/2006			6,732.0		6,855.0	
CODELL, ORIGINAL HOLE			3/2/2006			7,020.0		7,033.0	
Other In Hole									
Run Date		Des				OD (in)	Top (ftKB)	Btm (ftKB)	
Logs									
Date		Type					Top, MD (ftKB)		Btm, MD (ftKB)
2/22/2006		COMPENSATED DENSITY					2,600.0		7,153.0
2/22/2006		INDUCTION					484.0		7,173.0
2/28/2006		CBL/CCL/GR					5,080.0		7,123.0
5/27/2016		GYRO					0.0		6,900.0
Plug Back Total Depths									
Date		Type		Com					Depth (ftKB)
2/28/2006		FILL		DEPTH LOGGER ON CBL					7,128.0
3/24/2006		PLUG REMNANTS		PUSH CIBP					7,090.0