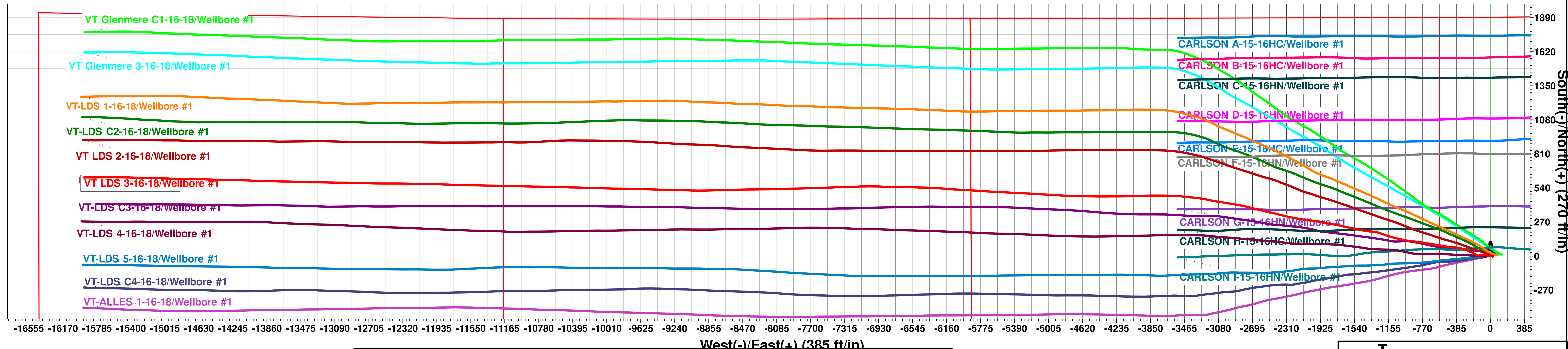




Extraction Oil & Gas  
Project: Weld County, CO (NAD83)  
Site: Vetting PAD (Sec 15-T5N-R65W)  
Well: VT LDS 3-16-18  
Wellbore: Wellbore #1  
Design: Wellbore #1 (VT LDS 3-16-18/Wellbore #1)  
Patterson #901

Planned Section Details  
No plan data is available



**WELL DETAILS: VT LDS 3-16-18**

Ground Elevation:: 4648.00  
RKB Elevation: KB=29 @ 4677.00ft (Patterson #901)  
Rig Name: Patterson #901

Northing	Easting	Latitude	Longitude
1390146.83	3234831.93	40.40129	-104.65680

PROJECT DETAILS: Weld County, CO (NAD83)  
Geodetic System: US State Plane 1983  
Datum: North American Datum 1983  
Ellipsoid: GRS 1980  
Zone: Colorado Northern Zone  
System Datum: Ground Level  
Local North: True

**Compass Rose**

T M

Azimuths to True North  
Magnetic North: 8.08°

Magnetic Field  
Strength: 52232.4snT  
Dip Angle: 66.88°  
Date: 8/15/2018  
Model: HDGM

