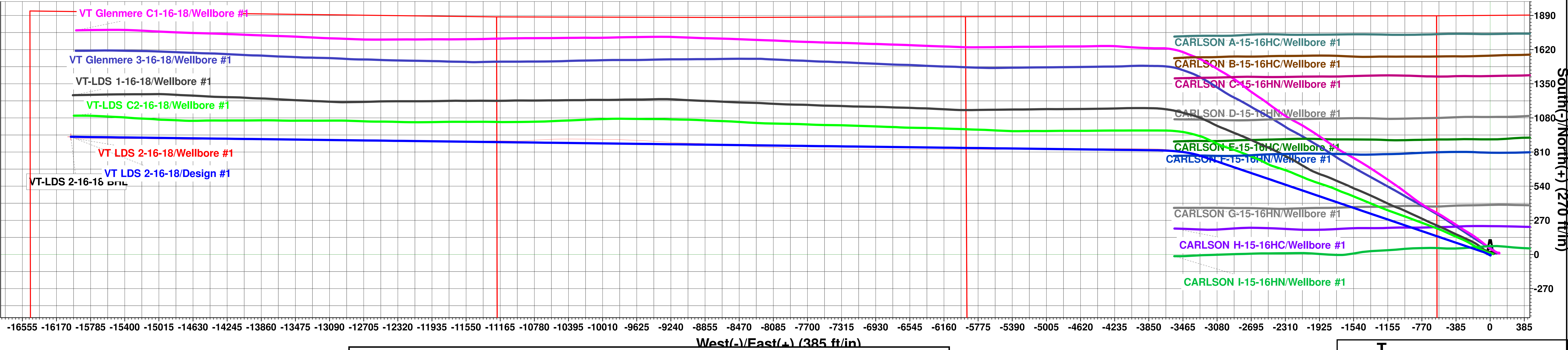




Extraction Oil & Gas
Project: Weld County, CO (NAD83)
Site: Vetting PAD (Sec 15-T5N-R65W)
Well: VT LDS 2-16-18
Wellbore: Wellbore #1
Plan: Design #1 (VT LDS 2-16-18/Wellbore #1)
Patterson #901

Planned Section Details										
Sec	MD	Inc	Azi	TVD	+N/-S	+E/-W	Dleg	TFace	VSect	
1	1515.00	15.14	283.54	1504.37	26.63	-107.83	0.00	0.00	109.19	
2	2442.07	33.68	283.41	2344.89	115.36	-478.82	2.00	-0.23	484.71	
3	7615.19	33.68	283.41	6649.69	780.68	-3269.38	0.00	0.00	3309.17	
4	8187.98	90.00	270.50	6910.07	823.66	-3751.05	10.00	-15.40	3792.53	
5	20445.78	90.00	270.50	6910.07	930.62	-16008.39	0.00	0.00	16035.42	



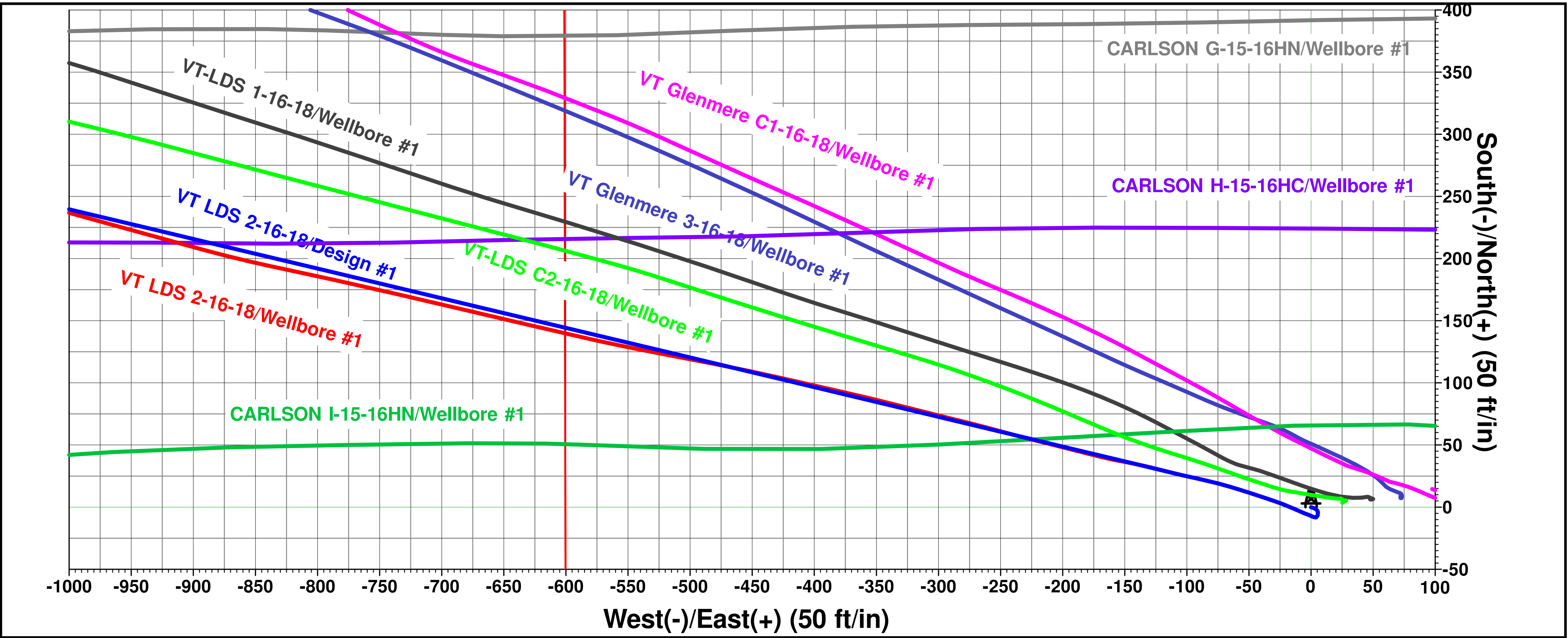
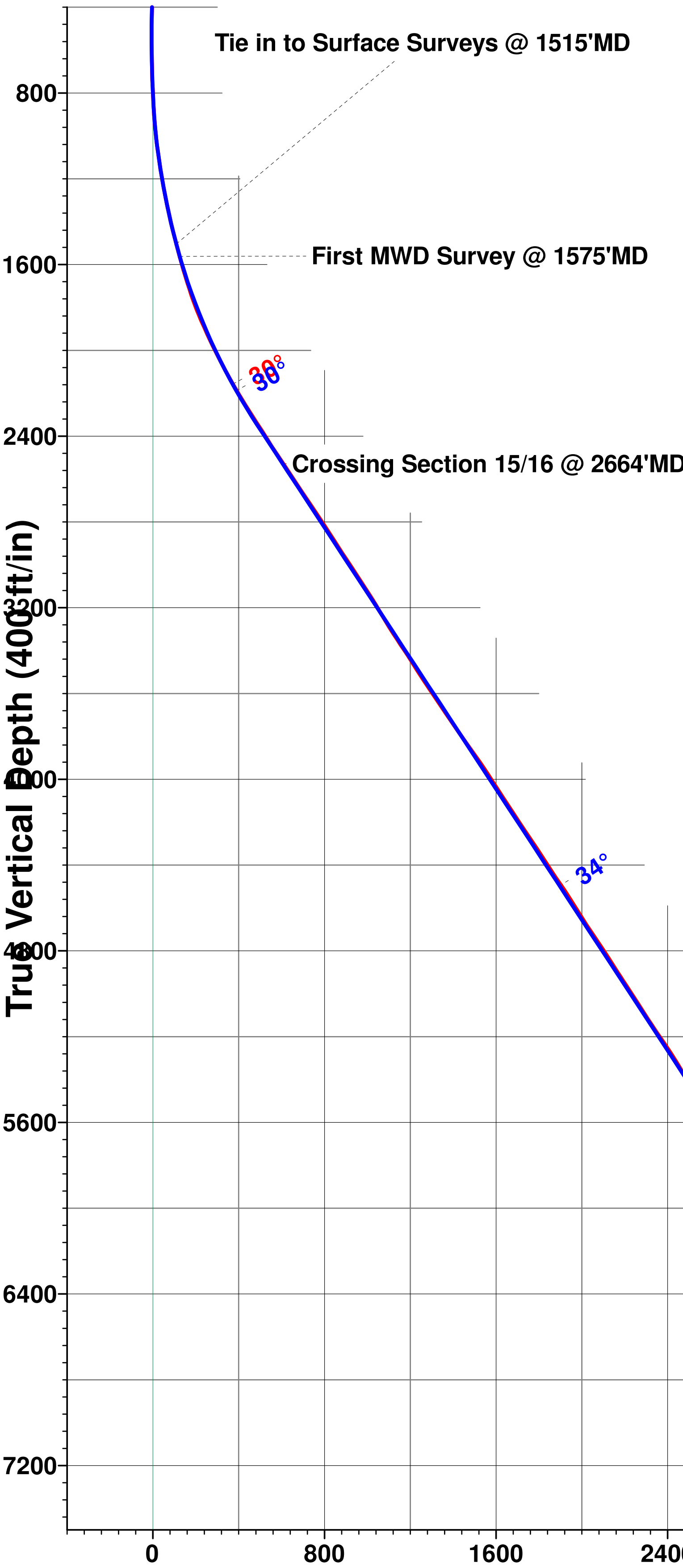
WELL DETAILS: VT LDS 2-16-18

Ground Elevation:: 4648.00
RKB Elevation: KB=29 @ 4677.00ft (Patterson #901)
Rig Name: Patterson #901

Northing	Easting	Latitude	Longitude
1390150.69	3234854.17	40.401300	-104.656720

PROJECT DETAILS: Weld County, CO (NAD83)
Geodetic System: US State Plane 1983
Datum: North American Datum 1983
Ellipsoid: GRS 1980
Zone: Colorado Northern Zone
System Datum: Ground Level
Local North: True

↑ T M
Azimuths to True North
Magnetic North: 8.10°
Magnetic Field
Strength: 52246.8snT
Dip Angle: 66.88°
Date: 7/3/2018
Model: HDGM



Vertical Section at 273.33° (400 ft/in)