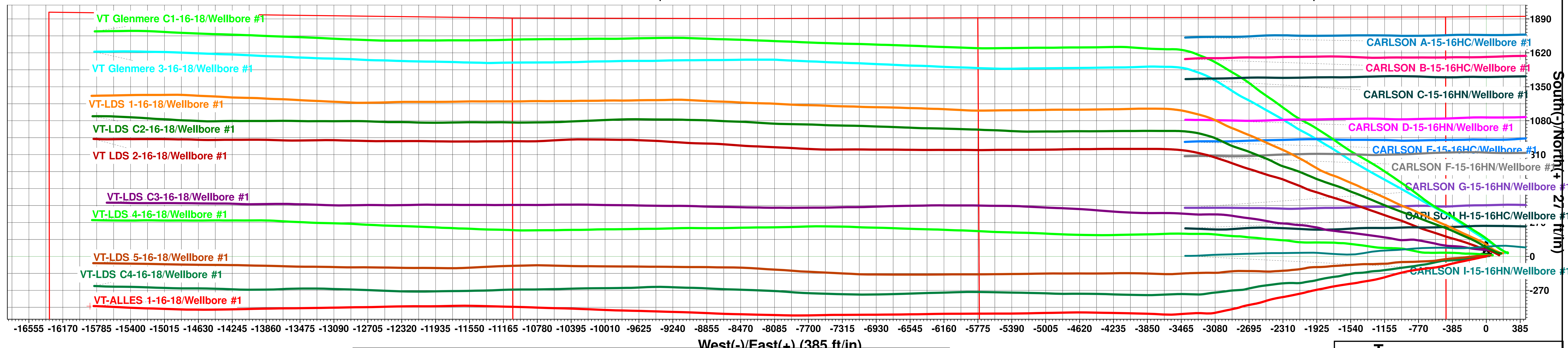




Extraction Oil & Gas
Project: Weld County, CO (NAD83)
Site: Vetting PAD (Sec 15-T5N-R65W)
Well: VT-ALLES 1-16-18
Wellbore: Wellbore #1
Design: Wellbore #1 (VT-ALLES 1-16-18/Wellbore #1)
Patterson #901

Planned Section Details
No plan data is available



WELL DETAILS: VT-ALLES 1-16-18

Ground Elevation:: 4647.00
RKB Elevation: KB=29 @ 4776.00ft (Patterson #901)
Rig Name: Patterson #901

Northing	Easting	Latitude	Longitude
1390131.12	3234712.31	40.40125	-104.65723

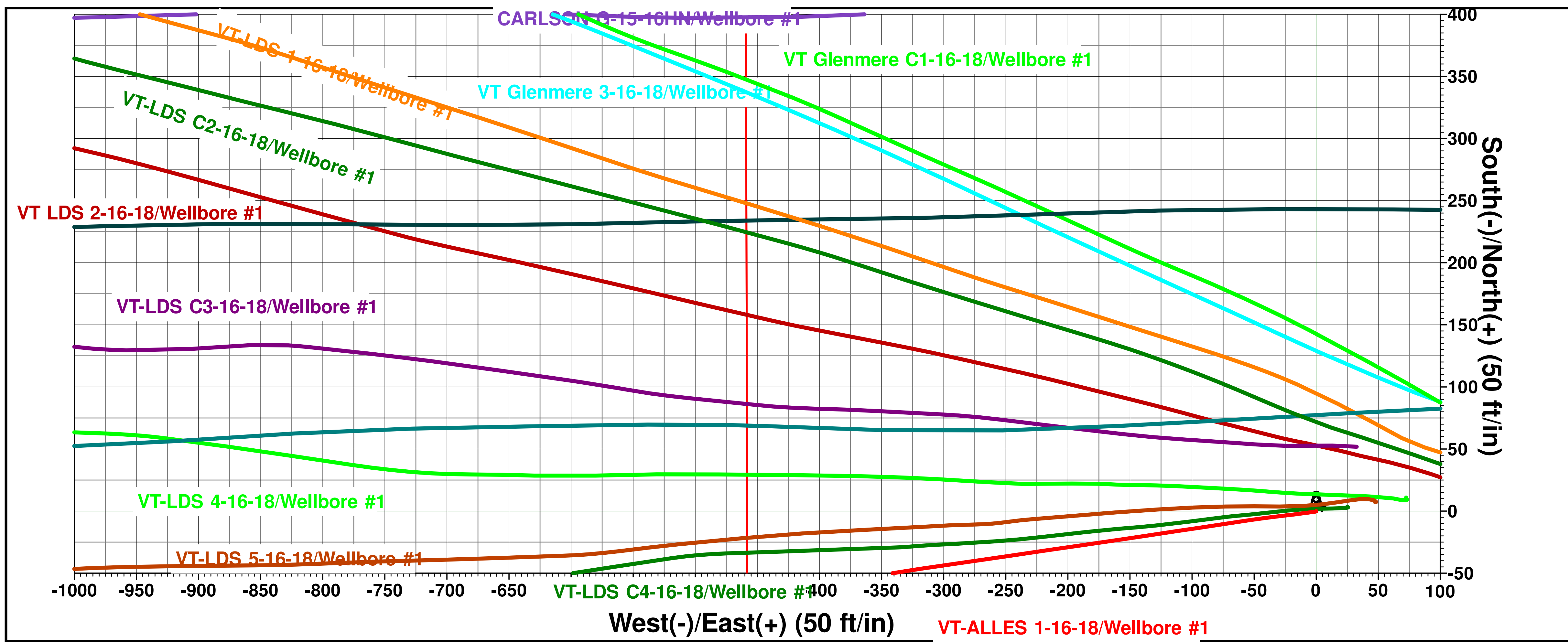
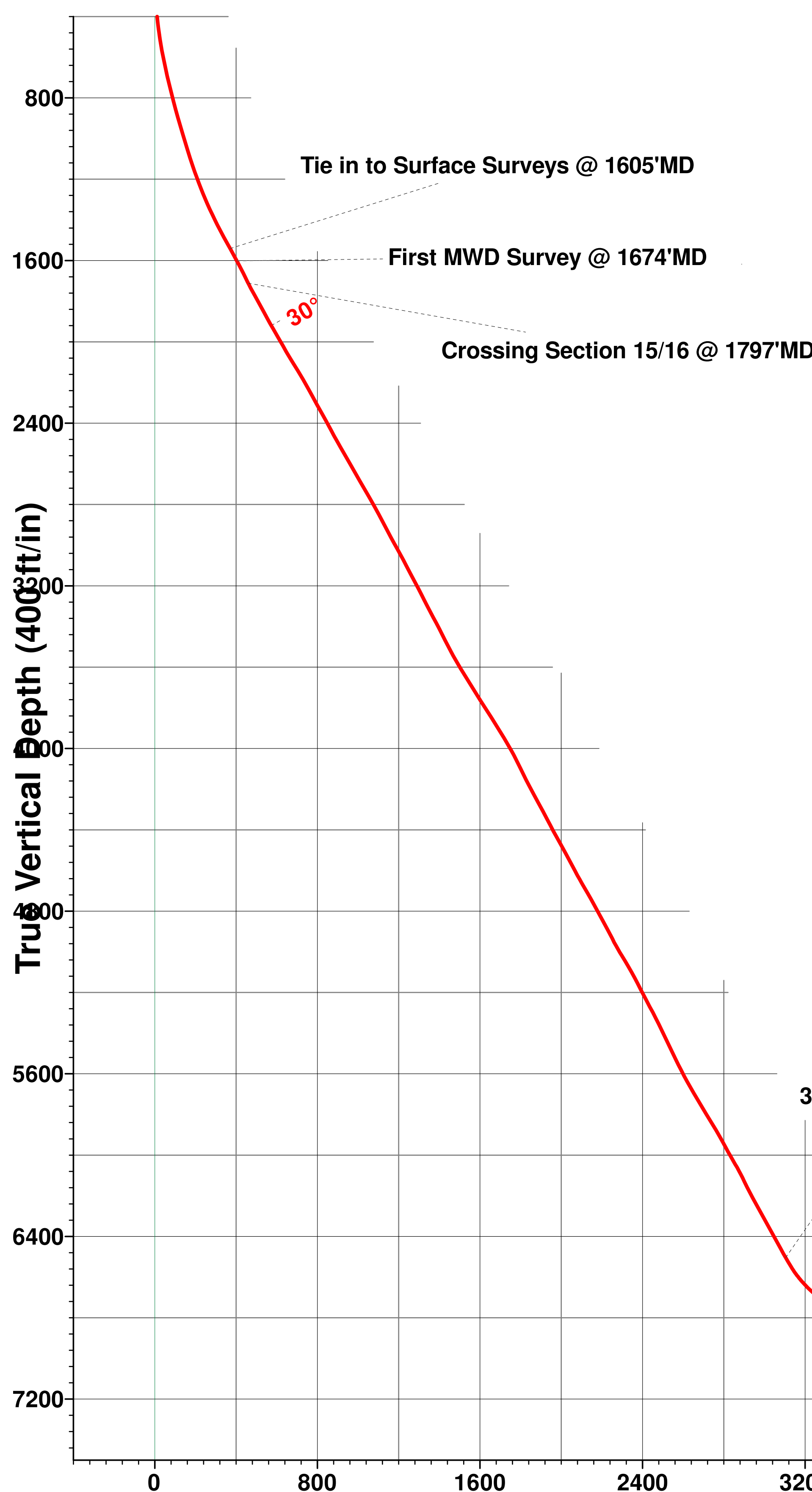
PROJECT DETAILS: Weld County, CO (NAD83)
Geodetic System: US State Plane 1983
Datum: North American Datum 1983
Ellipsoid: GRS 1980
Zone: Colorado Northern Zone
System Datum: Ground Level
Local North: True

Compass Rose

T M

Azimuths to True North
Magnetic North: 8.08°

Magnetic Field
Strength: 52235.9snT
Dip Angle: 66.88°
Date: 8/2/2018
Model: HDGM



Vertical Section at 268.57° (400 ft/in)