



Crestone Peak Resources

Well Name:

SHELEY 3G-4H-M267

Project Name:

Sec 4 T2N-R67W

Pad Name:

Sheley Pad

ANNOTATIONS

MD	Inc	Azi	TVD	+N/-S	+E/-W	VSect	Departure	Annotation
250.00	0.00	0.00	250.00	0.00	0.00	0.00	0.00	Start Build 2.00
912.10	13.24	277.14	906.22	9.47	-75.58	-75.31	76.17	Hold 13.24 Inc, 277.14 Az
6710.84	13.24	277.14	6550.78	174.62	-1393.55	-1388.55	1404.45	KOP 8/100
8000.54	90.00	91.50	7430.00	176.70	-695.92	-691.10	2141.73	LP 90 Inc, 91.5 Az
11500.54	90.00	91.50	7430.00	85.08	2802.88	2804.15	5641.73	Start 2/100 Turn
11624.70	90.00	89.02	7430.00	84.52	2927.03	2928.24	5765.89	Hold 89.02 Az
12598.33	90.00	89.02	7430.00	101.23	3900.51	3901.83	6739.51	TD at 12598.33

Geodetic Datum:

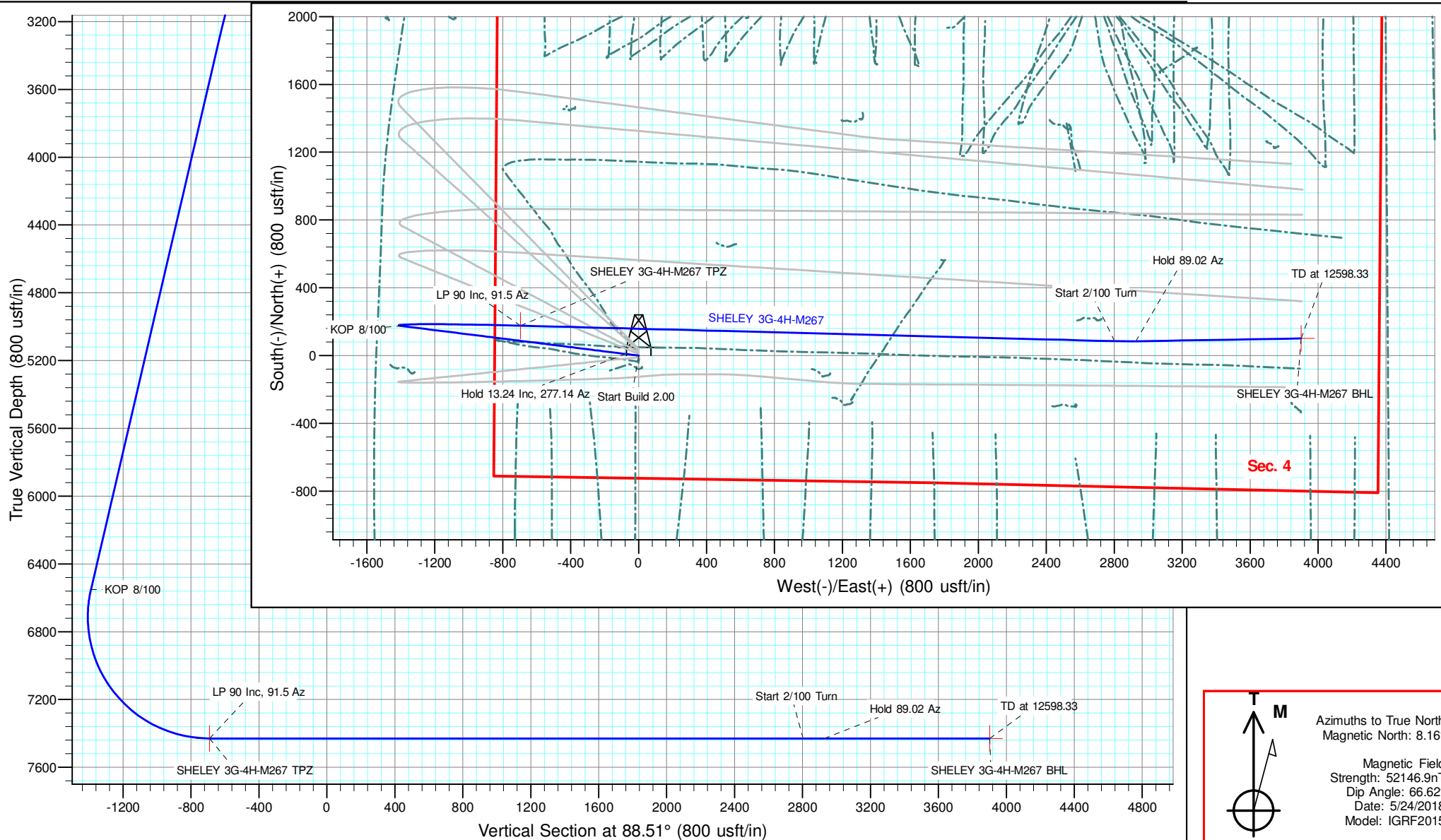
North American Datum 1983
US State Plane 1983, Colorado Northern Zone

Elevation:

Ground Elevation: 4911.00
KB Elevation: RKB @ 4934.00usft

DESIGN TARGET DETAILS

Name	TVD	+N/-S	+E/-W	Northing	Easting	Latitude	Longitude	Shape
SHELEY 3G-4H-M267 BHL	7430.00	101.23	3900.51	1302597.05	3171187.44	40.162401	-104.887488	Point
SHELEY 3G-4H-M267 TPZ	7430.00	176.70	-695.92	1302641.50	3166590.60	40.162609	-104.903934	Point





Crestone Peak Resources

Sec 4 T2N-R67W

Sheley Pad

SHELEY 3G-4H-M267

Wellbore #1

Plan: Plan #2 25Jun18 kjs

Standard Planning Report - Geographic

29 June, 2018

Database:	EDM 5000.15 Single User Db	Local Co-ordinate Reference:	Well SHELEY 3G-4H-M267
Company:	Crestone Peak Resources	TVD Reference:	RKB @ 4934.00usft
Project:	Sec 4 T2N-R67W	MD Reference:	RKB @ 4934.00usft
Site:	Sheley Pad	North Reference:	True
Well:	SHELEY 3G-4H-M267	Survey Calculation Method:	Minimum Curvature
Wellbore:	Wellbore #1		
Design:	Plan #2 25Jun18 kjs		

Project	Sec 4 T2N-R67W, Weld County, CO		
Map System:	US State Plane 1983	System Datum:	Mean Sea Level
Geo Datum:	North American Datum 1983		
Map Zone:	Colorado Northern Zone		

Site	Sheley Pad				
Site Position:		Northing:	1,302,549.65 usft	Latitude:	40.162344
From:	Lat/Long	Easting:	3,167,287.72 usft	Longitude:	-104.901442
Position Uncertainty:	0.00 usft	Slot Radius:	13-3/16 "	Grid Convergence:	0.39 °

Well	SHELEY 3G-4H-M267					
Well Position	+N/-S	0.00 usft	Northing:	1,302,469.50 usft	Latitude:	40.162124
	+E/-W	0.00 usft	Easting:	3,167,287.70 usft	Longitude:	-104.901444
Position Uncertainty		0.00 usft	Wellhead Elevation:		Ground Level:	4,911.00 usft

Wellbore	Wellbore #1				
Magnetics	Model Name	Sample Date	Declination (°)	Dip Angle (°)	Field Strength (nT)
	IGRF2015	5/24/2018	8.16	66.62	52,146.94474037

Design	Plan #2 25Jun18 kjs			
Audit Notes:				
Version:	Phase:	PLAN	Tie On Depth:	0.00
Vertical Section:	Depth From (TVD) (usft)	+N/-S (usft)	+E/-W (usft)	Direction (°)
	0.00	0.00	0.00	88.51

Plan Survey Tool Program	Date	6/29/2018		
Depth From (usft)	Depth To (usft)	Survey (Wellbore)	Tool Name	Remarks
1	0.00	12,598.33 Plan #2 25Jun18 kjs (Wellbore #	MWD	
			OWSG MWD - Standard	

Plan Sections										
Measured Depth (usft)	Inclination (°)	Azimuth (°)	Vertical Depth (usft)	+N/-S (usft)	+E/-W (usft)	Dogleg Rate (°/100usft)	Build Rate (°/100usft)	Turn Rate (°/100usft)	TFO (°)	Target
0.00	0.00	0.00	0.00	0.00	0.00	0.00	0.00	0.00	0.00	
250.00	0.00	0.00	250.00	0.00	0.00	0.00	0.00	0.00	0.00	
912.10	13.24	277.14	906.22	9.47	-75.58	2.00	2.00	0.00	277.14	
6,710.84	13.24	277.14	6,550.78	174.62	-1,393.55	0.00	0.00	0.00	0.00	
8,000.54	90.00	91.50	7,430.00	176.70	-695.92	8.00	5.95	13.52	174.20	SHELEY 3G-4H-M26
11,500.54	90.00	91.50	7,430.00	85.08	2,802.88	0.00	0.00	0.00	0.00	
11,624.70	90.00	89.02	7,430.00	84.52	2,927.03	2.00	0.00	-2.00	-90.00	
12,598.33	90.00	89.02	7,430.00	101.23	3,900.51	0.00	0.00	0.00	0.00	SHELEY 3G-4H-M26

Database:	EDM 5000.15 Single User Db	Local Co-ordinate Reference:	Well SHELEY 3G-4H-M267
Company:	Crestone Peak Resources	TVD Reference:	RKB @ 4934.00usft
Project:	Sec 4 T2N-R67W	MD Reference:	RKB @ 4934.00usft
Site:	Sheley Pad	North Reference:	True
Well:	SHELEY 3G-4H-M267	Survey Calculation Method:	Minimum Curvature
Wellbore:	Wellbore #1		
Design:	Plan #2 25Jun18 kjs		

Planned Survey									
Measured Depth (usft)	Inclination (°)	Azimuth (°)	Vertical Depth (usft)	+N/-S (usft)	+E/-W (usft)	Map Northing (usft)	Map Easting (usft)	Latitude	Longitude
0.00	0.00	0.00	0.00	0.00	0.00	1,302,469.50	3,167,287.70	40.162124	-104.901444
100.00	0.00	0.00	100.00	0.00	0.00	1,302,469.50	3,167,287.70	40.162124	-104.901444
200.00	0.00	0.00	200.00	0.00	0.00	1,302,469.50	3,167,287.70	40.162124	-104.901444
250.00	0.00	0.00	250.00	0.00	0.00	1,302,469.50	3,167,287.70	40.162124	-104.901444
Start Build 2.00									
300.00	1.00	277.14	300.00	0.05	-0.43	1,302,469.55	3,167,287.27	40.162124	-104.901446
400.00	3.00	277.14	399.93	0.49	-3.90	1,302,469.96	3,167,283.80	40.162125	-104.901458
500.00	5.00	277.14	499.68	1.36	-10.82	1,302,470.78	3,167,276.88	40.162128	-104.901483
600.00	7.00	277.14	599.13	2.65	-21.19	1,302,472.01	3,167,266.50	40.162131	-104.901520
700.00	9.00	277.14	698.15	4.39	-35.00	1,302,473.65	3,167,252.68	40.162136	-104.901569
800.00	11.00	277.14	796.63	6.54	-52.23	1,302,475.69	3,167,235.43	40.162142	-104.901631
900.00	13.00	277.14	894.44	9.13	-72.85	1,302,478.13	3,167,214.79	40.162149	-104.901705
912.10	13.24	277.14	906.22	9.47	-75.58	1,302,478.46	3,167,212.06	40.162150	-104.901715
Hold 13.24 Inc, 277.14 Az									
1,000.00	13.24	277.14	991.78	11.97	-95.56	1,302,480.83	3,167,192.06	40.162157	-104.901786
1,100.00	13.24	277.14	1,089.13	14.82	-118.29	1,302,483.52	3,167,169.32	40.162165	-104.901867
1,200.00	13.24	277.14	1,186.47	17.67	-141.02	1,302,486.22	3,167,146.57	40.162173	-104.901949
1,300.00	13.24	277.14	1,283.81	20.52	-163.74	1,302,488.91	3,167,123.82	40.162180	-104.902030
1,400.00	13.24	277.14	1,381.15	23.37	-186.47	1,302,491.60	3,167,101.07	40.162188	-104.902111
1,500.00	13.24	277.14	1,478.49	26.21	-209.20	1,302,494.30	3,167,078.33	40.162196	-104.902193
1,600.00	13.24	277.14	1,575.83	29.06	-231.93	1,302,496.99	3,167,055.58	40.162204	-104.902274
1,700.00	13.24	277.14	1,673.17	31.91	-254.66	1,302,499.69	3,167,032.83	40.162212	-104.902355
1,800.00	13.24	277.14	1,770.51	34.76	-277.39	1,302,502.38	3,167,010.09	40.162219	-104.902437
1,900.00	13.24	277.14	1,867.85	37.61	-300.12	1,302,505.08	3,166,987.34	40.162227	-104.902518
2,000.00	13.24	277.14	1,965.20	40.45	-322.84	1,302,507.77	3,166,964.59	40.162235	-104.902599
2,100.00	13.24	277.14	2,062.54	43.30	-345.57	1,302,510.47	3,166,941.84	40.162243	-104.902681
2,200.00	13.24	277.14	2,159.88	46.15	-368.30	1,302,513.16	3,166,919.10	40.162251	-104.902762
2,300.00	13.24	277.14	2,257.22	49.00	-391.03	1,302,515.85	3,166,896.35	40.162259	-104.902843
2,400.00	13.24	277.14	2,354.56	51.85	-413.76	1,302,518.55	3,166,873.60	40.162266	-104.902925
2,500.00	13.24	277.14	2,451.90	54.69	-436.49	1,302,521.24	3,166,850.85	40.162274	-104.903006
2,600.00	13.24	277.14	2,549.24	57.54	-459.22	1,302,523.94	3,166,828.11	40.162282	-104.903087
2,700.00	13.24	277.14	2,646.58	60.39	-481.95	1,302,526.63	3,166,805.36	40.162290	-104.903169
2,800.00	13.24	277.14	2,743.92	63.24	-504.67	1,302,529.33	3,166,782.61	40.162298	-104.903250
2,900.00	13.24	277.14	2,841.27	66.09	-527.40	1,302,532.02	3,166,759.86	40.162305	-104.903331
3,000.00	13.24	277.14	2,938.61	68.93	-550.13	1,302,534.72	3,166,737.12	40.162313	-104.903413
3,100.00	13.24	277.14	3,035.95	71.78	-572.86	1,302,537.41	3,166,714.37	40.162321	-104.903494
3,200.00	13.24	277.14	3,133.29	74.63	-595.59	1,302,540.11	3,166,691.62	40.162329	-104.903575
3,300.00	13.24	277.14	3,230.63	77.48	-618.32	1,302,542.80	3,166,668.88	40.162337	-104.903657
3,400.00	13.24	277.14	3,327.97	80.33	-641.05	1,302,545.49	3,166,646.13	40.162345	-104.903738
3,500.00	13.24	277.14	3,425.31	83.17	-663.77	1,302,548.19	3,166,623.38	40.162352	-104.903819
3,600.00	13.24	277.14	3,522.65	86.02	-686.50	1,302,550.88	3,166,600.63	40.162360	-104.903901
3,700.00	13.24	277.14	3,620.00	88.87	-709.23	1,302,553.58	3,166,577.89	40.162368	-104.903982
3,800.00	13.24	277.14	3,717.34	91.72	-731.96	1,302,556.27	3,166,555.14	40.162376	-104.904063
3,900.00	13.24	277.14	3,814.68	94.57	-754.69	1,302,558.97	3,166,532.39	40.162384	-104.904145
4,000.00	13.24	277.14	3,912.02	97.41	-777.42	1,302,561.66	3,166,509.64	40.162391	-104.904226
4,100.00	13.24	277.14	4,009.36	100.26	-800.15	1,302,564.36	3,166,486.90	40.162399	-104.904307
4,200.00	13.24	277.14	4,106.70	103.11	-822.87	1,302,567.05	3,166,464.15	40.162407	-104.904389
4,300.00	13.24	277.14	4,204.04	105.96	-845.60	1,302,569.75	3,166,441.40	40.162415	-104.904470
4,400.00	13.24	277.14	4,301.38	108.81	-868.33	1,302,572.44	3,166,418.65	40.162423	-104.904551
4,500.00	13.24	277.14	4,398.72	111.65	-891.06	1,302,575.13	3,166,395.91	40.162431	-104.904632
4,600.00	13.24	277.14	4,496.07	114.50	-913.79	1,302,577.83	3,166,373.16	40.162438	-104.904714
4,700.00	13.24	277.14	4,593.41	117.35	-936.52	1,302,580.52	3,166,350.41	40.162446	-104.904795
4,800.00	13.24	277.14	4,690.75	120.20	-959.25	1,302,583.22	3,166,327.67	40.162454	-104.904876
4,900.00	13.24	277.14	4,788.09	123.05	-981.98	1,302,585.91	3,166,304.92	40.162462	-104.904958

Database:	EDM 5000.15 Single User Db	Local Co-ordinate Reference:	Well SHELEY 3G-4H-M267
Company:	Crestone Peak Resources	TVD Reference:	RKB @ 4934.00usft
Project:	Sec 4 T2N-R67W	MD Reference:	RKB @ 4934.00usft
Site:	Sheley Pad	North Reference:	True
Well:	SHELEY 3G-4H-M267	Survey Calculation Method:	Minimum Curvature
Wellbore:	Wellbore #1		
Design:	Plan #2 25Jun18 kjs		

Planned Survey										
Measured Depth (usft)	Inclination (°)	Azimuth (°)	Vertical Depth (usft)	+N/-S (usft)	+E/-W (usft)	Map Northing (usft)	Map Easting (usft)	Latitude	Longitude	
5,000.00	13.24	277.14	4,885.43	125.89	-1,004.70	1,302,588.61	3,166,282.17	40.162470	-104.905039	
5,100.00	13.24	277.14	4,982.77	128.74	-1,027.43	1,302,591.30	3,166,259.42	40.162477	-104.905120	
5,200.00	13.24	277.14	5,080.11	131.59	-1,050.16	1,302,594.00	3,166,236.68	40.162485	-104.905202	
5,300.00	13.24	277.14	5,177.45	134.44	-1,072.89	1,302,596.69	3,166,213.93	40.162493	-104.905283	
5,400.00	13.24	277.14	5,274.79	137.29	-1,095.62	1,302,599.38	3,166,191.18	40.162501	-104.905364	
5,500.00	13.24	277.14	5,372.14	140.13	-1,118.35	1,302,602.08	3,166,168.43	40.162509	-104.905446	
5,600.00	13.24	277.14	5,469.48	142.98	-1,141.08	1,302,604.77	3,166,145.69	40.162516	-104.905527	
5,700.00	13.24	277.14	5,566.82	145.83	-1,163.80	1,302,607.47	3,166,122.94	40.162524	-104.905608	
5,800.00	13.24	277.14	5,664.16	148.68	-1,186.53	1,302,610.16	3,166,100.19	40.162532	-104.905690	
5,900.00	13.24	277.14	5,761.50	151.53	-1,209.26	1,302,612.86	3,166,077.44	40.162540	-104.905771	
6,000.00	13.24	277.14	5,858.84	154.37	-1,231.99	1,302,615.55	3,166,054.70	40.162548	-104.905852	
6,100.00	13.24	277.14	5,956.18	157.22	-1,254.72	1,302,618.25	3,166,031.95	40.162556	-104.905934	
6,200.00	13.24	277.14	6,053.52	160.07	-1,277.45	1,302,620.94	3,166,009.20	40.162563	-104.906015	
6,300.00	13.24	277.14	6,150.87	162.92	-1,300.18	1,302,623.64	3,165,986.45	40.162571	-104.906096	
6,400.00	13.24	277.14	6,248.21	165.77	-1,322.90	1,302,626.33	3,165,963.71	40.162579	-104.906178	
6,500.00	13.24	277.14	6,345.55	168.61	-1,345.63	1,302,629.02	3,165,940.96	40.162587	-104.906259	
6,600.00	13.24	277.14	6,442.89	171.46	-1,368.36	1,302,631.72	3,165,918.21	40.162595	-104.906340	
6,700.00	13.24	277.14	6,540.23	174.31	-1,391.09	1,302,634.41	3,165,895.47	40.162602	-104.906422	
6,710.84	13.24	277.14	6,550.78	174.62	-1,393.55	1,302,634.71	3,165,893.00	40.162603	-104.906430	
KOP 8/100										
6,800.00	6.19	283.82	6,638.61	177.04	-1,408.37	1,302,637.03	3,165,878.17	40.162610	-104.906483	
6,900.00	2.36	57.40	6,738.44	179.44	-1,411.87	1,302,639.40	3,165,874.65	40.162617	-104.906496	
7,000.00	10.04	83.99	6,837.79	181.47	-1,401.45	1,302,641.50	3,165,885.06	40.162622	-104.906459	
7,100.00	18.00	87.42	6,934.73	183.08	-1,377.30	1,302,643.28	3,165,909.20	40.162627	-104.906372	
7,200.00	25.99	88.78	7,027.38	184.24	-1,339.89	1,302,644.69	3,165,946.59	40.162630	-104.906238	
7,300.00	33.98	89.53	7,113.93	184.94	-1,289.97	1,302,645.73	3,165,996.52	40.162632	-104.906060	
7,400.00	41.97	90.03	7,192.69	185.15	-1,228.48	1,302,646.35	3,166,058.00	40.162632	-104.905840	
7,500.00	49.97	90.39	7,262.14	184.88	-1,156.64	1,302,646.56	3,166,129.84	40.162631	-104.905583	
7,600.00	57.97	90.67	7,320.91	184.12	-1,075.84	1,302,646.35	3,166,210.64	40.162629	-104.905294	
7,700.00	65.96	90.91	7,367.88	182.90	-987.66	1,302,645.73	3,166,298.83	40.162626	-104.904978	
7,800.00	73.96	91.12	7,402.11	181.23	-893.80	1,302,644.70	3,166,392.70	40.162622	-104.904642	
7,900.00	81.96	91.31	7,422.96	179.16	-796.10	1,302,643.28	3,166,490.41	40.162616	-104.904293	
8,000.00	89.96	91.50	7,430.00	176.71	-696.46	1,302,641.51	3,166,590.06	40.162609	-104.903936	
8,000.54	90.00	91.50	7,430.00	176.70	-695.92	1,302,641.49	3,166,590.61	40.162609	-104.903934	
LP 90 Inc, 91.5 Az - SHELEY 3G-4H-M267 TPZ										
8,100.00	90.00	91.50	7,430.00	174.10	-596.50	1,302,639.56	3,166,690.04	40.162602	-104.903579	
8,200.00	90.00	91.50	7,430.00	171.48	-496.53	1,302,637.62	3,166,790.02	40.162595	-104.903221	
8,300.00	90.00	91.50	7,430.00	168.86	-396.57	1,302,635.68	3,166,890.00	40.162588	-104.902863	
8,400.00	90.00	91.50	7,430.00	166.24	-296.60	1,302,633.73	3,166,989.99	40.162580	-104.902506	
8,500.00	90.00	91.50	7,430.00	163.62	-196.63	1,302,631.79	3,167,089.97	40.162573	-104.902148	
8,600.00	90.00	91.50	7,430.00	161.01	-96.67	1,302,629.85	3,167,189.95	40.162566	-104.901790	
8,700.00	90.00	91.50	7,430.00	158.39	3.30	1,302,627.91	3,167,289.93	40.162559	-104.901432	
8,800.00	90.00	91.50	7,430.00	155.77	103.26	1,302,625.96	3,167,389.91	40.162552	-104.901075	
8,900.00	90.00	91.50	7,430.00	153.15	203.23	1,302,624.02	3,167,489.89	40.162544	-104.900717	
9,000.00	90.00	91.50	7,430.00	150.54	303.19	1,302,622.08	3,167,589.87	40.162537	-104.900359	
9,100.00	90.00	91.50	7,430.00	147.92	403.16	1,302,620.13	3,167,689.85	40.162530	-104.900002	
9,200.00	90.00	91.50	7,430.00	145.30	503.13	1,302,618.19	3,167,789.83	40.162523	-104.899644	
9,300.00	90.00	91.50	7,430.00	142.68	603.09	1,302,616.25	3,167,889.82	40.162516	-104.899286	
9,400.00	90.00	91.50	7,430.00	140.07	703.06	1,302,614.30	3,167,989.80	40.162509	-104.898929	
9,500.00	90.00	91.50	7,430.00	137.45	803.02	1,302,612.36	3,168,089.78	40.162501	-104.898571	
9,600.00	90.00	91.50	7,430.00	134.83	902.99	1,302,610.42	3,168,189.76	40.162494	-104.898213	
9,700.00	90.00	91.50	7,430.00	132.21	1,002.95	1,302,608.48	3,168,289.74	40.162487	-104.897856	
9,800.00	90.00	91.50	7,430.00	129.59	1,102.92	1,302,606.53	3,168,389.72	40.162480	-104.897498	
9,900.00	90.00	91.50	7,430.00	126.98	1,202.89	1,302,604.59	3,168,489.70	40.162473	-104.897140	

Database:	EDM 5000.15 Single User Db	Local Co-ordinate Reference:	Well SHELEY 3G-4H-M267
Company:	Crestone Peak Resources	TVD Reference:	RKB @ 4934.00usft
Project:	Sec 4 T2N-R67W	MD Reference:	RKB @ 4934.00usft
Site:	Sheley Pad	North Reference:	True
Well:	SHELEY 3G-4H-M267	Survey Calculation Method:	Minimum Curvature
Wellbore:	Wellbore #1		
Design:	Plan #2 25Jun18 kjs		

Planned Survey									
Measured Depth (usft)	Inclination (°)	Azimuth (°)	Vertical Depth (usft)	+N/-S (usft)	+E/-W (usft)	Map Northing (usft)	Map Easting (usft)	Latitude	Longitude
10,000.00	90.00	91.50	7,430.00	124.36	1,302.85	1,302,602.65	3,168,589.68	40.162465	-104.896783
10,100.00	90.00	91.50	7,430.00	121.74	1,402.82	1,302,600.70	3,168,689.66	40.162458	-104.896425
10,200.00	90.00	91.50	7,430.00	119.12	1,502.78	1,302,598.76	3,168,789.65	40.162451	-104.896067
10,300.00	90.00	91.50	7,430.00	116.51	1,602.75	1,302,596.82	3,168,889.63	40.162444	-104.895710
10,400.00	90.00	91.50	7,430.00	113.89	1,702.71	1,302,594.88	3,168,989.61	40.162437	-104.895352
10,500.00	90.00	91.50	7,430.00	111.27	1,802.68	1,302,592.93	3,169,089.59	40.162429	-104.894994
10,600.00	90.00	91.50	7,430.00	108.65	1,902.65	1,302,590.99	3,169,189.57	40.162422	-104.894637
10,700.00	90.00	91.50	7,430.00	106.04	2,002.61	1,302,589.05	3,169,289.55	40.162415	-104.894279
10,800.00	90.00	91.50	7,430.00	103.42	2,102.58	1,302,587.10	3,169,389.53	40.162408	-104.893921
10,900.00	90.00	91.50	7,430.00	100.80	2,202.54	1,302,585.16	3,169,489.51	40.162400	-104.893564
11,000.00	90.00	91.50	7,430.00	98.18	2,302.51	1,302,583.22	3,169,589.49	40.162393	-104.893206
11,100.00	90.00	91.50	7,430.00	95.56	2,402.47	1,302,581.28	3,169,689.48	40.162386	-104.892848
11,200.00	90.00	91.50	7,430.00	92.95	2,502.44	1,302,579.33	3,169,789.46	40.162379	-104.892491
11,300.00	90.00	91.50	7,430.00	90.33	2,602.41	1,302,577.39	3,169,889.44	40.162372	-104.892133
11,400.00	90.00	91.50	7,430.00	87.71	2,702.37	1,302,575.45	3,169,989.42	40.162364	-104.891775
11,500.00	90.00	91.50	7,430.00	85.09	2,802.34	1,302,573.50	3,170,089.40	40.162357	-104.891418
11,500.54	90.00	91.50	7,430.00	85.08	2,802.88	1,302,573.49	3,170,089.94	40.162357	-104.891416
Start 2/100 Turn									
11,600.00	90.00	89.51	7,430.00	84.20	2,902.33	1,302,573.29	3,170,189.39	40.162355	-104.891060
11,624.70	90.00	89.02	7,430.00	84.52	2,927.03	1,302,573.77	3,170,214.09	40.162356	-104.890971
Hold 89.02 Az									
11,700.00	90.00	89.02	7,430.00	85.81	3,002.31	1,302,575.57	3,170,289.37	40.162359	-104.890702
11,800.00	90.00	89.02	7,430.00	87.53	3,102.30	1,302,577.96	3,170,389.34	40.162364	-104.890344
11,900.00	90.00	89.02	7,430.00	89.24	3,202.29	1,302,580.35	3,170,489.31	40.162368	-104.889987
12,000.00	90.00	89.02	7,430.00	90.96	3,302.27	1,302,582.74	3,170,589.28	40.162373	-104.889629
12,100.00	90.00	89.02	7,430.00	92.67	3,402.26	1,302,585.14	3,170,689.25	40.162378	-104.889271
12,200.00	90.00	89.02	7,430.00	94.39	3,502.24	1,302,587.53	3,170,789.23	40.162382	-104.888913
12,300.00	90.00	89.02	7,430.00	96.11	3,602.23	1,302,589.92	3,170,889.20	40.162387	-104.888556
12,400.00	90.00	89.02	7,430.00	97.82	3,702.21	1,302,592.31	3,170,989.17	40.162392	-104.888198
12,500.00	90.00	89.02	7,430.00	99.54	3,802.20	1,302,594.70	3,171,089.14	40.162397	-104.887840
12,598.33	90.00	89.02	7,430.00	101.23	3,900.51	1,302,597.05	3,171,187.44	40.162401	-104.887488
TD at 12598.33 - SHELEY 3G-4H-M267 BHL									

Design Targets									
Target Name - hit/miss target - Shape	Dip Angle (°)	Dip Dir. (°)	TVD (usft)	+N/-S (usft)	+E/-W (usft)	Northing (usft)	Easting (usft)	Latitude	Longitude
SHELEY 3G-4H-M267 T - plan hits target center - Point	0.00	0.00	7,430.00	176.70	-695.92	1,302,641.49	3,166,590.61	40.162609	-104.903934
SHELEY 3G-4H-M267 E - plan hits target center - Point	0.00	0.00	7,430.00	101.23	3,900.51	1,302,597.05	3,171,187.44	40.162401	-104.887488



Planning Report - Geographic

Database:	EDM 5000.15 Single User Db	Local Co-ordinate Reference:	Well SHELEY 3G-4H-M267
Company:	Crestone Peak Resources	TVD Reference:	RKB @ 4934.00usft
Project:	Sec 4 T2N-R67W	MD Reference:	RKB @ 4934.00usft
Site:	Sheley Pad	North Reference:	True
Well:	SHELEY 3G-4H-M267	Survey Calculation Method:	Minimum Curvature
Wellbore:	Wellbore #1		
Design:	Plan #2 25Jun18 kjs		

Plan Annotations				
Measured Depth (usft)	Vertical Depth (usft)	Local Coordinates		Comment
		+N/-S (usft)	+E/-W (usft)	
250.00	250.00	0.00	0.00	Start Build 2.00
912.10	906.22	9.47	-75.58	Hold 13.24 Inc, 277.14 Az
6,710.84	6,550.78	174.62	-1,393.55	KOP 8/100
8,000.54	7,430.00	176.70	-695.92	LP 90 Inc, 91.5 Az
11,500.54	7,430.00	85.08	2,802.88	Start 2/100 Turn
11,624.70	7,430.00	84.52	2,927.03	Hold 89.02 Az
12,598.33	7,430.00	101.23	3,900.51	TD at 12598.33