



# Crestone Peak Resources

<b>Well Name:</b> <b>SHELEY 3H-4H-M267</b>	<b>Project Name:</b> <b>Sec 4 T2N-R67W</b>	<b>Pad Name:</b> <b>Sheley Pad</b>
---	---	---------------------------------------

### ANNOTATIONS

MD	Inc	Azi	TVD	+N/-S	+E/-W	VSect	Departure	Annotation
200.00	0.00	0.00	200.00	0.00	0.00	0.00	0.00	Start Build 2.00
873.02	13.46	264.18	866.85	-7.98	-78.29	-77.83	78.69	Hold 13.46 Inc, 264.18 Az
6560.10	13.46	264.18	6397.71	-142.25	-1395.26	-1387.20	1402.49	KOP 8/100
7852.87	90.00	88.50	7280.00	-139.92	-698.44	-691.23	2139.95	LP 90 Inc, 88.5 Az
8302.87	90.00	88.50	7280.00	-128.14	-248.60	-242.41	2589.95	Start Turn -2.00
8327.87	90.00	88.00	7280.00	-127.38	-223.61	-217.49	2614.95	Hold 88 Az
8422.87	90.00	88.00	7280.00	-124.06	-128.67	-122.80	2709.95	Start Turn -4.00
8497.87	90.00	85.00	7280.00	-119.48	-53.82	-48.24	2784.95	Hold 85 Az
8597.87	90.00	85.00	7280.00	-110.77	45.80	50.87	2884.95	Start Turn 2.00
8847.87	90.00	90.00	7280.00	-99.87	295.49	299.78	3134.95	Hold 90 Az
8997.87	90.00	90.00	7280.00	-99.87	445.49	449.62	3284.95	Start Turn 2.00
9247.87	90.00	95.00	7280.00	-110.77	695.17	699.54	3534.95	Hold 95 Az
9647.87	90.00	95.00	7280.00	-145.63	1093.65	1099.21	3934.95	Start Turn -2.00
9875.37	90.00	90.45	7280.00	-156.44	1326.65	1326.65	4162.45	Hold 90.45 Az
12358.76	90.00	90.45	7280.00	-175.95	3804.15	3808.22	6645.85	TD at 12358.76

### Geodetic Datum:

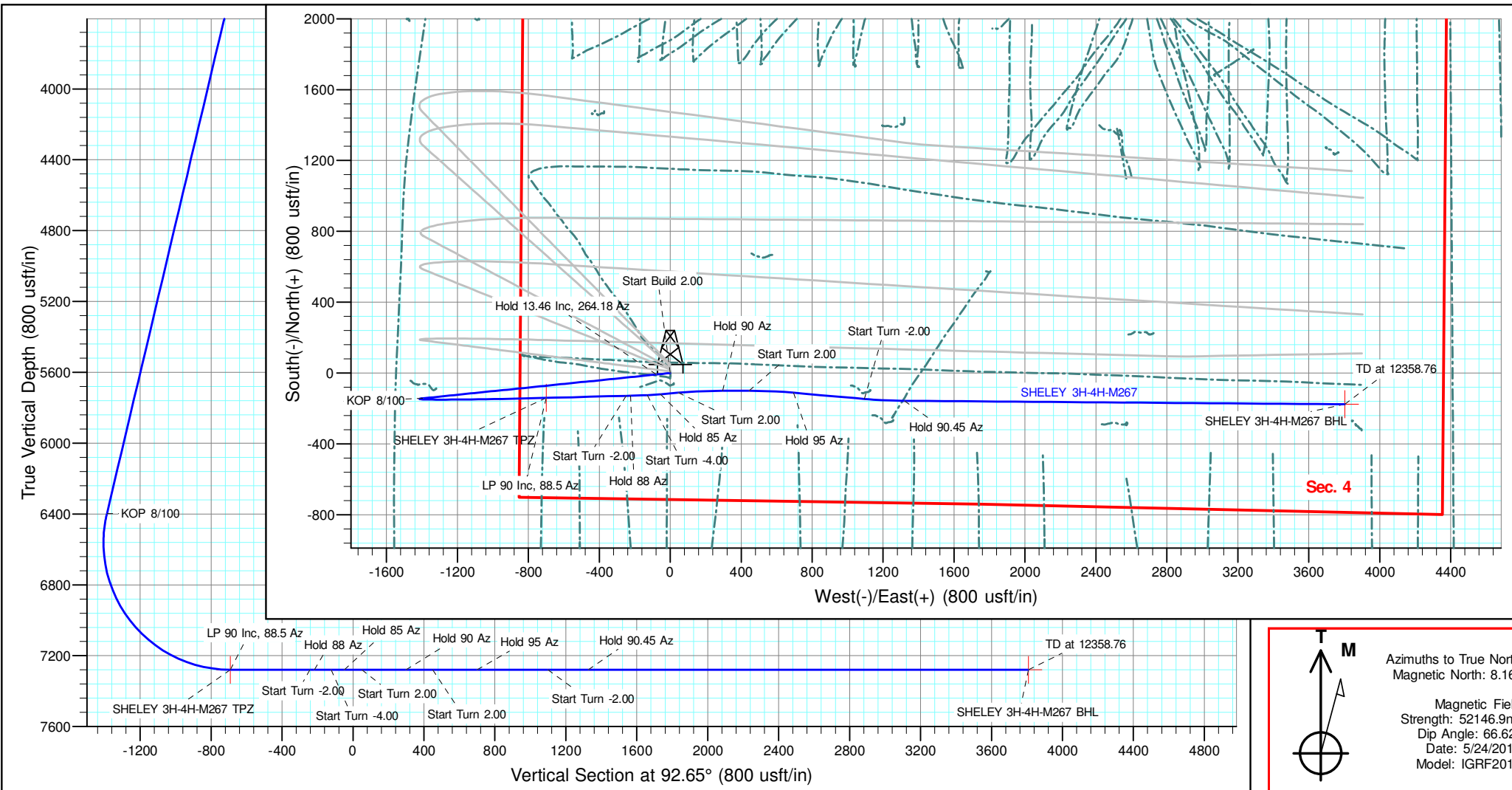
North American Datum 1983  
US State Plane 1983, Colorado Northern Zone

### Elevation:

Ground Elevation: 4911.00  
KB Elevation: RKB @ 4934.00usft

### DESIGN TARGET DETAILS

Name	TVD	+N/-S	+E/-W	Northing	Easting	Latitude	Longitude	Shape
SHELEY 3H-4H-M267 BHL	7280.00	-175.95	3804.15	1302309.39	3171093.02	40.161613	-104.887833	Point
SHELEY 3H-4H-M267 TPZ	7280.00	-139.92	-698.44	1302315.03	3166590.28	40.161713	-104.903943	Point



Azimuths to True North  
 Magnetic North: 8.16°  
 Magnetic Field Strength: 52146.9nT  
 Dip Angle: 66.62°  
 Date: 5/24/2018  
 Model: IGRF2015



# **Crestone Peak Resources**

**Sec 4 T2N-R67W**

**Sheley Pad**

**SHELEY 3H-4H-M267**

**Wellbore #1**

**Plan: Plan #3 25Jun18 kjs**

## **Standard Planning Report - Geographic**

**29 June, 2018**



## Planning Report - Geographic

<b>Database:</b>	EDM 5000.15 Single User Db	<b>Local Co-ordinate Reference:</b>	Well SHELEY 3H-4H-M267
<b>Company:</b>	Crestone Peak Resources	<b>TVD Reference:</b>	RKB @ 4934.00usft
<b>Project:</b>	Sec 4 T2N-R67W	<b>MD Reference:</b>	RKB @ 4934.00usft
<b>Site:</b>	Sheley Pad	<b>North Reference:</b>	True
<b>Well:</b>	SHELEY 3H-4H-M267	<b>Survey Calculation Method:</b>	Minimum Curvature
<b>Wellbore:</b>	Wellbore #1		
<b>Design:</b>	Plan #3 25Jun18 kjs		

<b>Project</b>	Sec 4 T2N-R67W, Weld County, CO		
<b>Map System:</b>	US State Plane 1983	<b>System Datum:</b>	Mean Sea Level
<b>Geo Datum:</b>	North American Datum 1983		
<b>Map Zone:</b>	Colorado Northern Zone		

<b>Site</b>	Sheley Pad				
<b>Site Position:</b>		<b>Northing:</b>	1,302,549.65 usft	<b>Latitude:</b>	40.162344
<b>From:</b>	Lat/Long	<b>Easting:</b>	3,167,287.72 usft	<b>Longitude:</b>	-104.901442
<b>Position Uncertainty:</b>	0.00 usft	<b>Slot Radius:</b>	13-3/16 "	<b>Grid Convergence:</b>	0.39 °

<b>Well</b>	SHELEY 3H-4H-M267					
<b>Well Position</b>	<b>+N/-S</b>	0.00 usft	<b>Northing:</b>	1,302,459.66 usft	<b>Latitude:</b>	40.162097
	<b>+E/-W</b>	0.00 usft	<b>Easting:</b>	3,167,287.77 usft	<b>Longitude:</b>	-104.901444
<b>Position Uncertainty</b>		0.00 usft	<b>Wellhead Elevation:</b>		<b>Ground Level:</b>	4,911.00 usft

<b>Wellbore</b>	Wellbore #1				
<b>Magnetics</b>	<b>Model Name</b>	<b>Sample Date</b>	<b>Declination (°)</b>	<b>Dip Angle (°)</b>	<b>Field Strength (nT)</b>
	IGRF2015	5/24/2018	8.16	66.62	52,146.93066128

<b>Design</b>	Plan #3 25Jun18 kjs			
<b>Audit Notes:</b>				
<b>Version:</b>	<b>Phase:</b>	PLAN	<b>Tie On Depth:</b>	0.00
<b>Vertical Section:</b>	<b>Depth From (TVD) (usft)</b>	<b>+N/-S (usft)</b>	<b>+E/-W (usft)</b>	<b>Direction (°)</b>
	0.00	0.00	0.00	92.65

<b>Plan Survey Tool Program</b>	<b>Date</b>	6/29/2018		
<b>Depth From (usft)</b>	<b>Depth To (usft)</b>	<b>Survey (Wellbore)</b>	<b>Tool Name</b>	<b>Remarks</b>
1	0.00	12,358.76 Plan #3 25Jun18 kjs (Wellbore #	MWD	
			OWSG MWD - Standard	



Planning Report - Geographic

<b>Database:</b>	EDM 5000.15 Single User Db	<b>Local Co-ordinate Reference:</b>	Well SHELEY 3H-4H-M267
<b>Company:</b>	Crestone Peak Resources	<b>TVD Reference:</b>	RKB @ 4934.00usft
<b>Project:</b>	Sec 4 T2N-R67W	<b>MD Reference:</b>	RKB @ 4934.00usft
<b>Site:</b>	Sheley Pad	<b>North Reference:</b>	True
<b>Well:</b>	SHELEY 3H-4H-M267	<b>Survey Calculation Method:</b>	Minimum Curvature
<b>Wellbore:</b>	Wellbore #1		
<b>Design:</b>	Plan #3 25Jun18 kjs		

Plan Sections										
Measured Depth (usft)	Inclination (°)	Azimuth (°)	Vertical Depth (usft)	+N/-S (usft)	+E/-W (usft)	Dogleg Rate (°/100usft)	Build Rate (°/100usft)	Turn Rate (°/100usft)	TFO (°)	Target
0.00	0.00	0.00	0.00	0.00	0.00	0.00	0.00	0.00	0.00	
200.00	0.00	0.00	200.00	0.00	0.00	0.00	0.00	0.00	0.00	
873.02	13.46	264.18	866.85	-7.98	-78.29	2.00	2.00	0.00	264.18	
6,560.10	13.46	264.18	6,397.71	-142.25	-1,395.26	0.00	0.00	0.00	0.00	
7,852.87	90.00	88.50	7,280.00	-139.92	-698.44	8.00	5.92	-13.59	-175.56	SHELEY 3H-4H-M267
8,302.87	90.00	88.50	7,280.00	-128.14	-248.60	0.00	0.00	0.00	0.00	
8,327.87	90.00	88.00	7,280.00	-127.38	-223.61	2.00	0.00	-2.00	-90.00	
8,422.87	90.00	88.00	7,280.00	-124.06	-128.67	0.00	0.00	0.00	0.00	
8,497.87	90.00	85.00	7,280.00	-119.48	-53.82	4.00	0.00	-4.00	-90.00	
8,597.87	90.00	85.00	7,280.00	-110.77	45.80	0.00	0.00	0.00	0.00	
8,847.87	90.00	90.00	7,280.00	-99.87	295.49	2.00	0.00	2.00	90.00	
8,997.87	90.00	90.00	7,280.00	-99.87	445.49	0.00	0.00	0.00	0.00	
9,247.87	90.00	95.00	7,280.00	-110.77	695.17	2.00	0.00	2.00	90.00	
9,647.87	90.00	95.00	7,280.00	-145.63	1,093.65	0.00	0.00	0.00	0.00	
9,875.37	90.00	90.45	7,280.00	-156.44	1,320.83	2.00	0.00	-2.00	-90.00	
12,358.76	90.00	90.45	7,280.00	-175.95	3,804.15	0.00	0.00	0.00	0.00	SHELEY 3H-4H-M267

<b>Database:</b>	EDM 5000.15 Single User Db	<b>Local Co-ordinate Reference:</b>	Well SHELEY 3H-4H-M267
<b>Company:</b>	Crestone Peak Resources	<b>TVD Reference:</b>	RKB @ 4934.00usft
<b>Project:</b>	Sec 4 T2N-R67W	<b>MD Reference:</b>	RKB @ 4934.00usft
<b>Site:</b>	Sheley Pad	<b>North Reference:</b>	True
<b>Well:</b>	SHELEY 3H-4H-M267	<b>Survey Calculation Method:</b>	Minimum Curvature
<b>Wellbore:</b>	Wellbore #1		
<b>Design:</b>	Plan #3 25Jun18 kjs		

Planned Survey										
Measured Depth (usft)	Inclination (°)	Azimuth (°)	Vertical Depth (usft)	+N/-S (usft)	+E/-W (usft)	Map Northing (usft)	Map Easting (usft)	Latitude	Longitude	
0.00	0.00	0.00	0.00	0.00	0.00	1,302,459.66	3,167,287.77	40.162097	-104.901444	
100.00	0.00	0.00	100.00	0.00	0.00	1,302,459.66	3,167,287.77	40.162097	-104.901444	
200.00	0.00	0.00	200.00	0.00	0.00	1,302,459.66	3,167,287.77	40.162097	-104.901444	
<b>Start Build 2.00</b>										
300.00	2.00	264.18	299.98	-0.18	-1.74	1,302,459.47	3,167,286.03	40.162097	-104.901450	
400.00	4.00	264.18	399.84	-0.71	-6.94	1,302,458.91	3,167,280.83	40.162095	-104.901469	
500.00	6.00	264.18	499.45	-1.59	-15.61	1,302,457.96	3,167,272.17	40.162093	-104.901500	
600.00	8.00	264.18	598.70	-2.83	-27.74	1,302,456.65	3,167,260.05	40.162089	-104.901544	
700.00	10.00	264.18	697.47	-4.41	-43.30	1,302,454.96	3,167,244.50	40.162085	-104.901599	
800.00	12.00	264.18	795.62	-6.35	-62.28	1,302,452.89	3,167,225.53	40.162080	-104.901667	
873.02	13.46	264.18	866.85	-7.98	-78.29	1,302,451.15	3,167,209.54	40.162075	-104.901724	
<b>Hold 13.46 Inc, 264.18 Az</b>										
900.00	13.46	264.18	893.09	-8.62	-84.53	1,302,450.47	3,167,203.29	40.162073	-104.901747	
1,000.00	13.46	264.18	990.34	-10.98	-107.69	1,302,447.96	3,167,180.15	40.162067	-104.901830	
1,100.00	13.46	264.18	1,087.59	-13.34	-130.85	1,302,445.44	3,167,157.01	40.162060	-104.901912	
1,200.00	13.46	264.18	1,184.84	-15.70	-154.01	1,302,442.92	3,167,133.87	40.162054	-104.901995	
1,300.00	13.46	264.18	1,282.10	-18.06	-177.16	1,302,440.40	3,167,110.73	40.162047	-104.902078	
1,400.00	13.46	264.18	1,379.35	-20.42	-200.32	1,302,437.89	3,167,087.59	40.162041	-104.902161	
1,500.00	13.46	264.18	1,476.60	-22.78	-223.48	1,302,435.37	3,167,064.45	40.162035	-104.902244	
1,600.00	13.46	264.18	1,573.86	-25.15	-246.64	1,302,432.85	3,167,041.31	40.162028	-104.902327	
1,700.00	13.46	264.18	1,671.11	-27.51	-269.79	1,302,430.34	3,167,018.17	40.162022	-104.902410	
1,800.00	13.46	264.18	1,768.36	-29.87	-292.95	1,302,427.82	3,166,995.03	40.162015	-104.902492	
1,900.00	13.46	264.18	1,865.62	-32.23	-316.11	1,302,425.30	3,166,971.88	40.162009	-104.902575	
2,000.00	13.46	264.18	1,962.87	-34.59	-339.26	1,302,422.78	3,166,948.74	40.162002	-104.902658	
2,100.00	13.46	264.18	2,060.12	-36.95	-362.42	1,302,420.27	3,166,925.60	40.161996	-104.902741	
2,200.00	13.46	264.18	2,157.38	-39.31	-385.58	1,302,417.75	3,166,902.46	40.161989	-104.902824	
2,300.00	13.46	264.18	2,254.63	-41.67	-408.74	1,302,415.23	3,166,879.32	40.161983	-104.902907	
2,400.00	13.46	264.18	2,351.88	-44.03	-431.89	1,302,412.72	3,166,856.18	40.161976	-104.902990	
2,500.00	13.46	264.18	2,449.13	-46.39	-455.05	1,302,410.20	3,166,833.04	40.161970	-104.903072	
2,600.00	13.46	264.18	2,546.39	-48.75	-478.21	1,302,407.68	3,166,809.90	40.161963	-104.903155	
2,700.00	13.46	264.18	2,643.64	-51.12	-501.37	1,302,405.16	3,166,786.76	40.161957	-104.903238	
2,800.00	13.46	264.18	2,740.89	-53.48	-524.52	1,302,402.65	3,166,763.62	40.161950	-104.903321	
2,900.00	13.46	264.18	2,838.15	-55.84	-547.68	1,302,400.13	3,166,740.48	40.161944	-104.903404	
3,000.00	13.46	264.18	2,935.40	-58.20	-570.84	1,302,397.61	3,166,717.34	40.161937	-104.903487	
3,100.00	13.46	264.18	3,032.65	-60.56	-593.99	1,302,395.09	3,166,694.20	40.161931	-104.903570	
3,200.00	13.46	264.18	3,129.91	-62.92	-617.15	1,302,392.58	3,166,671.05	40.161924	-104.903652	
3,300.00	13.46	264.18	3,227.16	-65.28	-640.31	1,302,390.06	3,166,647.91	40.161918	-104.903735	
3,400.00	13.46	264.18	3,324.41	-67.64	-663.47	1,302,387.54	3,166,624.77	40.161911	-104.903818	
3,500.00	13.46	264.18	3,421.67	-70.00	-686.62	1,302,385.03	3,166,601.63	40.161905	-104.903901	
3,600.00	13.46	264.18	3,518.92	-72.36	-709.78	1,302,382.51	3,166,578.49	40.161898	-104.903984	
3,700.00	13.46	264.18	3,616.17	-74.72	-732.94	1,302,379.99	3,166,555.35	40.161892	-104.904067	
3,800.00	13.46	264.18	3,713.43	-77.09	-756.10	1,302,377.47	3,166,532.21	40.161885	-104.904150	
3,900.00	13.46	264.18	3,810.68	-79.45	-779.25	1,302,374.96	3,166,509.07	40.161879	-104.904232	
4,000.00	13.46	264.18	3,907.93	-81.81	-802.41	1,302,372.44	3,166,485.93	40.161872	-104.904315	
4,100.00	13.46	264.18	4,005.18	-84.17	-825.57	1,302,369.92	3,166,462.79	40.161866	-104.904398	
4,200.00	13.46	264.18	4,102.44	-86.53	-848.72	1,302,367.41	3,166,439.65	40.161859	-104.904481	
4,300.00	13.46	264.18	4,199.69	-88.89	-871.88	1,302,364.89	3,166,416.51	40.161853	-104.904564	
4,400.00	13.46	264.18	4,296.94	-91.25	-895.04	1,302,362.37	3,166,393.37	40.161847	-104.904647	
4,500.00	13.46	264.18	4,394.20	-93.61	-918.20	1,302,359.85	3,166,370.22	40.161840	-104.904730	
4,600.00	13.46	264.18	4,491.45	-95.97	-941.35	1,302,357.34	3,166,347.08	40.161834	-104.904812	
4,700.00	13.46	264.18	4,588.70	-98.33	-964.51	1,302,354.82	3,166,323.94	40.161827	-104.904895	
4,800.00	13.46	264.18	4,685.96	-100.70	-987.67	1,302,352.30	3,166,300.80	40.161821	-104.904978	
4,900.00	13.46	264.18	4,783.21	-103.06	-1,010.83	1,302,349.79	3,166,277.66	40.161814	-104.905061	
5,000.00	13.46	264.18	4,880.46	-105.42	-1,033.98	1,302,347.27	3,166,254.52	40.161808	-104.905144	

<b>Database:</b>	EDM 5000.15 Single User Db	<b>Local Co-ordinate Reference:</b>	Well SHELEY 3H-4H-M267
<b>Company:</b>	Crestone Peak Resources	<b>TVD Reference:</b>	RKB @ 4934.00usft
<b>Project:</b>	Sec 4 T2N-R67W	<b>MD Reference:</b>	RKB @ 4934.00usft
<b>Site:</b>	Sheley Pad	<b>North Reference:</b>	True
<b>Well:</b>	SHELEY 3H-4H-M267	<b>Survey Calculation Method:</b>	Minimum Curvature
<b>Wellbore:</b>	Wellbore #1		
<b>Design:</b>	Plan #3 25Jun18 kjs		

Planned Survey										
Measured Depth (usft)	Inclination (°)	Azimuth (°)	Vertical Depth (usft)	+N/-S (usft)	+E/-W (usft)	Map Northing (usft)	Map Easting (usft)	Latitude	Longitude	
5,100.00	13.46	264.18	4,977.72	-107.78	-1,057.14	1,302,344.75	3,166,231.38	40.161801	-104.905227	
5,200.00	13.46	264.18	5,074.97	-110.14	-1,080.30	1,302,342.23	3,166,208.24	40.161795	-104.905310	
5,300.00	13.46	264.18	5,172.22	-112.50	-1,103.45	1,302,339.72	3,166,185.10	40.161788	-104.905392	
5,400.00	13.46	264.18	5,269.48	-114.86	-1,126.61	1,302,337.20	3,166,161.96	40.161782	-104.905475	
5,500.00	13.46	264.18	5,366.73	-117.22	-1,149.77	1,302,334.68	3,166,138.82	40.161775	-104.905558	
5,600.00	13.46	264.18	5,463.98	-119.58	-1,172.93	1,302,332.16	3,166,115.68	40.161769	-104.905641	
5,700.00	13.46	264.18	5,561.23	-121.94	-1,196.08	1,302,329.65	3,166,092.53	40.161762	-104.905724	
5,800.00	13.46	264.18	5,658.49	-124.30	-1,219.24	1,302,327.13	3,166,069.39	40.161756	-104.905807	
5,900.00	13.46	264.18	5,755.74	-126.67	-1,242.40	1,302,324.61	3,166,046.25	40.161749	-104.905890	
6,000.00	13.46	264.18	5,852.99	-129.03	-1,265.55	1,302,322.10	3,166,023.11	40.161743	-104.905972	
6,100.00	13.46	264.18	5,950.25	-131.39	-1,288.71	1,302,319.58	3,165,999.97	40.161736	-104.906055	
6,200.00	13.46	264.18	6,047.50	-133.75	-1,311.87	1,302,317.06	3,165,976.83	40.161730	-104.906138	
6,300.00	13.46	264.18	6,144.75	-136.11	-1,335.03	1,302,314.54	3,165,953.69	40.161723	-104.906221	
6,400.00	13.46	264.18	6,242.01	-138.47	-1,358.18	1,302,312.03	3,165,930.55	40.161717	-104.906304	
6,500.00	13.46	264.18	6,339.26	-140.83	-1,381.34	1,302,309.51	3,165,907.41	40.161710	-104.906387	
6,560.10	13.46	264.18	6,397.71	-142.25	-1,395.26	1,302,308.00	3,165,893.50	40.161706	-104.906436	
<b>KOP 8/100</b>										
6,600.00	10.28	262.79	6,436.75	-143.17	-1,403.41	1,302,307.02	3,165,885.35	40.161704	-104.906466	
6,700.00	2.46	243.65	6,536.06	-145.24	-1,414.20	1,302,304.88	3,165,874.58	40.161698	-104.906504	
6,800.00	5.86	98.62	6,635.92	-146.96	-1,411.07	1,302,303.18	3,165,877.72	40.161694	-104.906493	
6,900.00	13.81	92.71	6,734.37	-148.29	-1,394.07	1,302,301.96	3,165,894.73	40.161690	-104.906432	
7,000.00	21.79	91.09	6,829.51	-149.21	-1,363.54	1,302,301.25	3,165,925.26	40.161687	-104.906323	
7,100.00	29.79	90.31	6,919.47	-149.69	-1,320.07	1,302,301.06	3,165,968.73	40.161686	-104.906167	
7,200.00	37.78	89.83	7,002.52	-149.74	-1,264.51	1,302,301.39	3,166,024.29	40.161686	-104.905969	
7,300.00	45.78	89.51	7,077.03	-149.34	-1,197.94	1,302,302.24	3,166,090.86	40.161687	-104.905730	
7,400.00	53.78	89.26	7,141.55	-148.51	-1,121.65	1,302,303.59	3,166,167.14	40.161689	-104.905457	
7,500.00	61.78	89.05	7,194.83	-147.25	-1,037.13	1,302,305.41	3,166,251.65	40.161693	-104.905155	
7,600.00	69.77	88.88	7,235.83	-145.61	-946.03	1,302,307.67	3,166,342.75	40.161697	-104.904829	
7,700.00	77.77	88.72	7,263.75	-143.60	-850.11	1,302,310.33	3,166,438.65	40.161703	-104.904486	
7,800.00	85.77	88.58	7,278.05	-141.27	-751.25	1,302,313.33	3,166,537.49	40.161709	-104.904132	
7,852.87	90.00	88.50	7,280.00	-139.92	-698.44	1,302,315.03	3,166,590.28	40.161713	-104.903943	
<b>LP 90 Inc, 88.5 Az - SHELEY 3H-4H-M267 TPZ</b>										
7,900.00	90.00	88.50	7,280.00	-138.69	-651.33	1,302,316.58	3,166,637.39	40.161716	-104.903775	
8,000.00	90.00	88.50	7,280.00	-136.07	-551.36	1,302,319.87	3,166,737.34	40.161724	-104.903417	
8,100.00	90.00	88.50	7,280.00	-133.45	-451.40	1,302,323.17	3,166,837.28	40.161731	-104.903059	
8,200.00	90.00	88.50	7,280.00	-130.83	-351.43	1,302,326.46	3,166,937.23	40.161738	-104.902702	
8,300.00	90.00	88.50	7,280.00	-128.22	-251.46	1,302,329.75	3,167,037.17	40.161745	-104.902344	
8,302.87	90.00	88.50	7,280.00	-128.14	-248.60	1,302,329.85	3,167,040.04	40.161745	-104.902334	
<b>Start Turn -2.00</b>										
8,327.87	90.00	88.00	7,280.00	-127.38	-223.61	1,302,330.78	3,167,065.02	40.161747	-104.902244	
<b>Hold 88 Az</b>										
8,400.00	90.00	88.00	7,280.00	-124.86	-151.52	1,302,333.78	3,167,137.09	40.161754	-104.901986	
8,422.87	90.00	88.00	7,280.00	-124.06	-128.67	1,302,334.73	3,167,159.94	40.161756	-104.901905	
<b>Start Turn -4.00</b>										
8,497.87	90.00	85.00	7,280.00	-119.48	-53.82	1,302,339.82	3,167,234.76	40.161769	-104.901637	
<b>Hold 85 Az</b>										
8,500.00	90.00	85.00	7,280.00	-119.30	-51.69	1,302,340.02	3,167,236.88	40.161770	-104.901629	
8,597.87	90.00	85.00	7,280.00	-110.77	45.80	1,302,349.21	3,167,334.32	40.161793	-104.901280	
<b>Start Turn 2.00</b>										
8,600.00	90.00	85.04	7,280.00	-110.58	47.93	1,302,349.40	3,167,336.44	40.161793	-104.901273	
8,700.00	90.00	87.04	7,280.00	-103.68	147.68	1,302,356.98	3,167,436.15	40.161812	-104.900916	
8,800.00	90.00	89.04	7,280.00	-100.27	247.62	1,302,361.07	3,167,536.06	40.161822	-104.900558	
8,847.87	90.00	90.00	7,280.00	-99.87	295.49	1,302,361.79	3,167,583.92	40.161823	-104.900387	
<b>Hold 90 Az</b>										

<b>Database:</b>	EDM 5000.15 Single User Db	<b>Local Co-ordinate Reference:</b>	Well SHELEY 3H-4H-M267
<b>Company:</b>	Crestone Peak Resources	<b>TVD Reference:</b>	RKB @ 4934.00usft
<b>Project:</b>	Sec 4 T2N-R67W	<b>MD Reference:</b>	RKB @ 4934.00usft
<b>Site:</b>	Sheley Pad	<b>North Reference:</b>	True
<b>Well:</b>	SHELEY 3H-4H-M267	<b>Survey Calculation Method:</b>	Minimum Curvature
<b>Wellbore:</b>	Wellbore #1		
<b>Design:</b>	Plan #3 25Jun18 kjs		

Planned Survey										
Measured Depth (usft)	Inclination (°)	Azimuth (°)	Vertical Depth (usft)	+N/-S (usft)	+E/-W (usft)	Map Northing (usft)	Map Easting (usft)	Latitude	Longitude	
8,900.00	90.00	90.00	7,280.00	-99.87	347.62	1,302,362.14	3,167,636.05	40.161823	-104.900200	
8,997.87	90.00	90.00	7,280.00	-99.87	445.49	1,302,362.80	3,167,733.92	40.161823	-104.899850	
<b>Start Turn 2.00</b>										
9,000.00	90.00	90.04	7,280.00	-99.87	447.62	1,302,362.82	3,167,736.05	40.161823	-104.899843	
9,100.00	90.00	92.04	7,280.00	-101.69	547.60	1,302,361.67	3,167,836.04	40.161818	-104.899485	
9,200.00	90.00	94.04	7,280.00	-107.00	647.45	1,302,357.04	3,167,935.93	40.161803	-104.899128	
9,247.87	90.00	95.00	7,280.00	-110.77	695.17	1,302,353.59	3,167,983.67	40.161793	-104.898957	
<b>Hold 95 Az</b>										
9,300.00	90.00	95.00	7,280.00	-115.31	747.10	1,302,349.40	3,168,035.63	40.161780	-104.898771	
9,400.00	90.00	95.00	7,280.00	-124.03	846.72	1,302,341.35	3,168,135.31	40.161757	-104.898415	
9,500.00	90.00	95.00	7,280.00	-132.74	946.34	1,302,333.31	3,168,234.98	40.161733	-104.898058	
9,600.00	90.00	95.00	7,280.00	-141.46	1,045.96	1,302,325.27	3,168,334.66	40.161709	-104.897702	
9,647.87	90.00	95.00	7,280.00	-145.63	1,093.65	1,302,321.42	3,168,382.37	40.161697	-104.897531	
<b>Start Turn -2.00</b>										
9,700.00	90.00	93.96	7,280.00	-149.70	1,145.62	1,302,317.70	3,168,434.37	40.161686	-104.897345	
9,800.00	90.00	91.96	7,280.00	-154.86	1,245.48	1,302,313.21	3,168,534.27	40.161672	-104.896988	
9,875.37	90.00	90.45	7,280.00	-156.44	1,320.83	1,302,312.14	3,168,609.62	40.161667	-104.896718	
<b>Hold 90.45 Az</b>										
9,900.00	90.00	90.45	7,280.00	-156.64	1,345.46	1,302,312.11	3,168,634.26	40.161667	-104.896630	
10,000.00	90.00	90.45	7,280.00	-157.42	1,445.46	1,302,312.00	3,168,734.26	40.161665	-104.896272	
10,100.00	90.00	90.45	7,280.00	-158.21	1,545.46	1,302,311.89	3,168,834.26	40.161663	-104.895915	
10,200.00	90.00	90.45	7,280.00	-158.99	1,645.45	1,302,311.78	3,168,934.26	40.161660	-104.895557	
10,300.00	90.00	90.45	7,280.00	-159.78	1,745.45	1,302,311.67	3,169,034.26	40.161658	-104.895199	
10,400.00	90.00	90.45	7,280.00	-160.56	1,845.45	1,302,311.56	3,169,134.26	40.161656	-104.894841	
10,500.00	90.00	90.45	7,280.00	-161.35	1,945.44	1,302,311.45	3,169,234.26	40.161654	-104.894484	
10,600.00	90.00	90.45	7,280.00	-162.14	2,045.44	1,302,311.34	3,169,334.26	40.161652	-104.894126	
10,700.00	90.00	90.45	7,280.00	-162.92	2,145.44	1,302,311.23	3,169,434.26	40.161650	-104.893768	
10,800.00	90.00	90.45	7,280.00	-163.71	2,245.43	1,302,311.12	3,169,534.26	40.161647	-104.893410	
10,900.00	90.00	90.45	7,280.00	-164.49	2,345.43	1,302,311.01	3,169,634.25	40.161645	-104.893052	
11,000.00	90.00	90.45	7,280.00	-165.28	2,445.43	1,302,310.90	3,169,734.25	40.161643	-104.892695	
11,100.00	90.00	90.45	7,280.00	-166.06	2,545.42	1,302,310.79	3,169,834.25	40.161641	-104.892337	
11,200.00	90.00	90.45	7,280.00	-166.85	2,645.42	1,302,310.67	3,169,934.25	40.161639	-104.891979	
11,300.00	90.00	90.45	7,280.00	-167.63	2,745.42	1,302,310.56	3,170,034.25	40.161636	-104.891621	
11,400.00	90.00	90.45	7,280.00	-168.42	2,845.42	1,302,310.45	3,170,134.25	40.161634	-104.891264	
11,500.00	90.00	90.45	7,280.00	-169.20	2,945.41	1,302,310.34	3,170,234.25	40.161632	-104.890906	
11,600.00	90.00	90.45	7,280.00	-169.99	3,045.41	1,302,310.23	3,170,334.25	40.161630	-104.890548	
11,700.00	90.00	90.45	7,280.00	-170.77	3,145.41	1,302,310.12	3,170,434.25	40.161628	-104.890190	
11,800.00	90.00	90.45	7,280.00	-171.56	3,245.40	1,302,310.01	3,170,534.25	40.161626	-104.889832	
11,900.00	90.00	90.45	7,280.00	-172.35	3,345.40	1,302,309.90	3,170,634.25	40.161623	-104.889475	
12,000.00	90.00	90.45	7,280.00	-173.13	3,445.40	1,302,309.79	3,170,734.25	40.161621	-104.889117	
12,100.00	90.00	90.45	7,280.00	-173.92	3,545.39	1,302,309.68	3,170,834.25	40.161619	-104.888759	
12,200.00	90.00	90.45	7,280.00	-174.70	3,645.39	1,302,309.57	3,170,934.25	40.161617	-104.888401	
12,300.00	90.00	90.45	7,280.00	-175.49	3,745.39	1,302,309.46	3,171,034.25	40.161615	-104.888043	
12,358.76	90.00	90.45	7,280.00	-175.95	3,804.15	1,302,309.40	3,171,093.02	40.161613	-104.887833	
<b>TD at 12358.76 - SHELEY 3H-4H-M267 BHL</b>										

<b>Database:</b>	EDM 5000.15 Single User Db	<b>Local Co-ordinate Reference:</b>	Well SHELEY 3H-4H-M267
<b>Company:</b>	Crestone Peak Resources	<b>TVD Reference:</b>	RKB @ 4934.00usft
<b>Project:</b>	Sec 4 T2N-R67W	<b>MD Reference:</b>	RKB @ 4934.00usft
<b>Site:</b>	Sheley Pad	<b>North Reference:</b>	True
<b>Well:</b>	SHELEY 3H-4H-M267	<b>Survey Calculation Method:</b>	Minimum Curvature
<b>Wellbore:</b>	Wellbore #1		
<b>Design:</b>	Plan #3 25Jun18 kjs		

Design Targets									
Target Name	Dip Angle	Dip Dir.	TVD	+N/-S	+E/-W	Northing	Easting	Latitude	Longitude
- hit/miss target	(°)	(°)	(usft)	(usft)	(usft)	(usft)	(usft)		
- Shape									
SHELEY 3H-4H-M267 B - plan hits target center - Point	0.00	0.00	7,280.00	-175.95	3,804.15	1,302,309.39	3,171,093.02	40.161613	-104.887833
SHELEY 3H-4H-M267 T - plan hits target center - Point	0.00	0.00	7,280.00	-139.92	-698.44	1,302,315.03	3,166,590.28	40.161713	-104.903943

Plan Annotations				
Measured Depth	Vertical Depth	Local Coordinates		Comment
(usft)	(usft)	+N/-S (usft)	+E/-W (usft)	
200.00	200.00	0.00	0.00	Start Build 2.00
873.02	866.85	-7.98	-78.29	Hold 13.46 Inc, 264.18 Az
6,560.10	6,397.71	-142.25	-1,395.26	KOP 8/100
7,852.87	7,280.00	-139.92	-698.44	LP 90 Inc, 88.5 Az
8,302.87	7,280.00	-128.14	-248.60	Start Turn -2.00
8,327.87	7,280.00	-127.38	-223.61	Hold 88 Az
8,422.87	7,280.00	-124.06	-128.67	Start Turn -4.00
8,497.87	7,280.00	-119.48	-53.82	Hold 85 Az
8,597.87	7,280.00	-110.77	45.80	Start Turn 2.00
8,847.87	7,280.00	-99.87	295.49	Hold 90 Az
8,997.87	7,280.00	-99.87	445.49	Start Turn 2.00
9,247.87	7,280.00	-110.77	695.17	Hold 95 Az
9,647.87	7,280.00	-145.63	1,093.65	Start Turn -2.00
9,875.37	7,280.00	-156.44	1,320.83	Hold 90.45 Az
12,358.76	7,280.00	-175.95	3,804.15	TD at 12358.76