



# Crestone Peak Resources

Well Name:

**SHELEY 3F-4H-M267**

Project Name:

**Sec 4 T2N-R67W**

Pad Name:

**Sheley Pad**

## ANNOTATIONS

MD	Inc	Azi	TVD	+N/-S	+E/-W	VSect	Departure	Annotation
350.00	0.00	0.00	350.00	0.00	0.00	0.00	0.00	Start Build 2.00
1091.45	14.83	292.10	1083.20	35.90	-88.40	-85.27	95.41	Hold 14.83 Inc, 292.1 Az
6584.36	14.83	292.10	6393.17	564.86	-1390.92	-1341.66	1501.24	KOP 8/100
7884.89	90.00	93.55	7280.00	596.35	-692.83	-643.28	2253.60	LP 90 Inc, 93.5 Az
12488.73	90.00	93.55	7280.00	311.05	3902.16	3914.53	6857.43	TD at 12488.73

## Geodetic Datum:

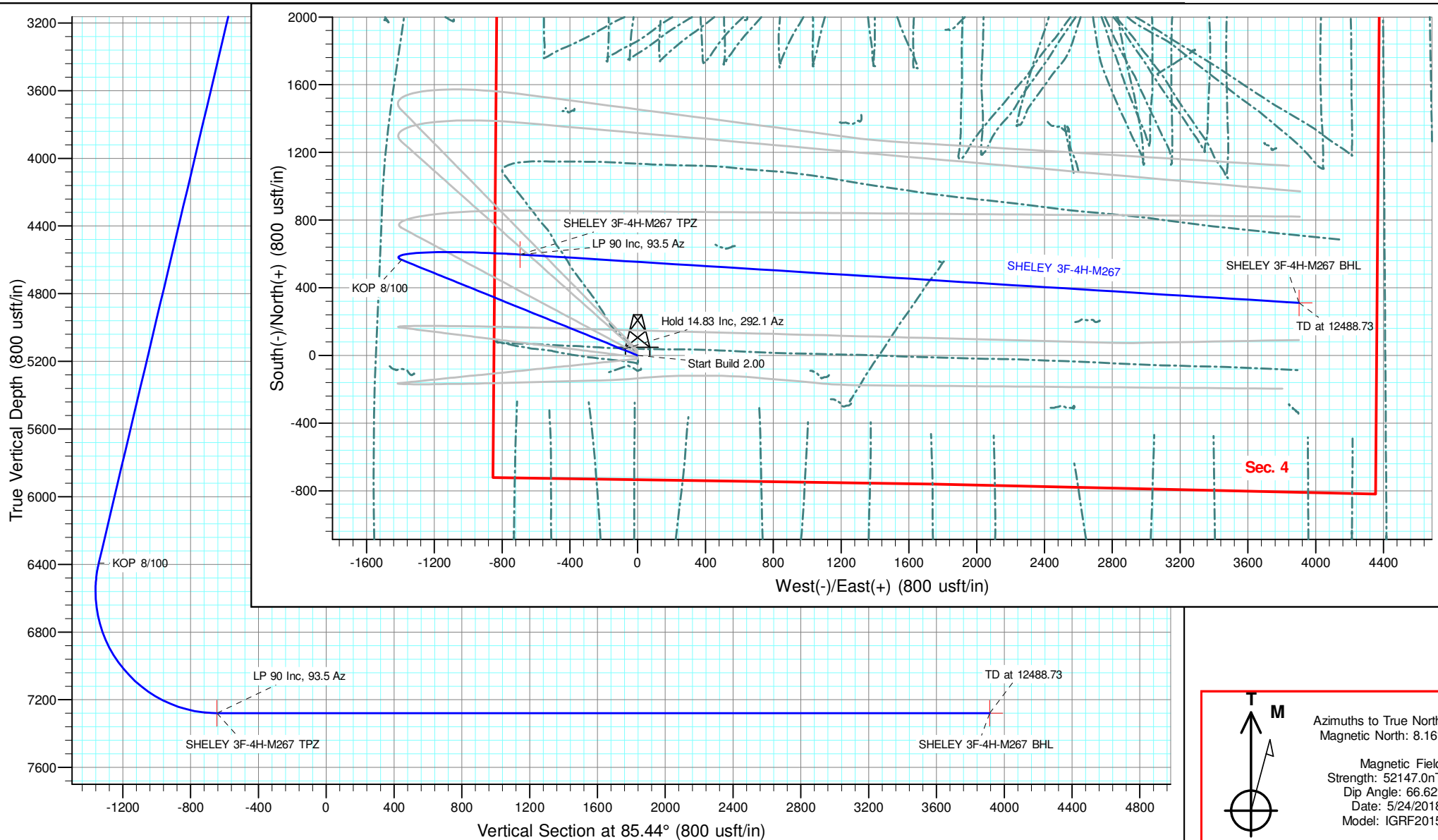
North American Datum 1983  
US State Plane 1983, Colorado Northern Zone

## Elevation:

Ground Elevation: 4911.00  
KB Elevation: RKB @ 4934.00usft

## DESIGN TARGET DETAILS

Name	TVD	+N/-S	+E/-W	Northing	Easting	Latitude	Longitude	Shape
SHELEY 3F-4H-M267 BHL	7280.00	311.05	3902.16	1302817.08	3171187.88	40.163005	-104.887481	Point
SHELEY 3F-4H-M267 TPZ	7280.00	596.35	-692.83	1303071.36	3166591.07	40.163789	-104.903922	Point





# **Crestone Peak Resources**

**Sec 4 T2N-R67W**

**Sheley Pad**

**SHELEY 3F-4H-M267**

**Wellbore #1**

**Plan: Plan #2 25Jun18 kjs**

## **Standard Planning Report - Geographic**

**29 June, 2018**

<b>Database:</b>	EDM 5000.15 Single User Db	<b>Local Co-ordinate Reference:</b>	Well SHELEY 3F-4H-M267
<b>Company:</b>	Crestone Peak Resources	<b>TVD Reference:</b>	RKB @ 4934.00usft
<b>Project:</b>	Sec 4 T2N-R67W	<b>MD Reference:</b>	RKB @ 4934.00usft
<b>Site:</b>	Sheley Pad	<b>North Reference:</b>	True
<b>Well:</b>	SHELEY 3F-4H-M267	<b>Survey Calculation Method:</b>	Minimum Curvature
<b>Wellbore:</b>	Wellbore #1		
<b>Design:</b>	Plan #2 25Jun18 kjs		

<b>Project</b>	Sec 4 T2N-R67W, Weld County, CO		
<b>Map System:</b>	US State Plane 1983	<b>System Datum:</b>	Mean Sea Level
<b>Geo Datum:</b>	North American Datum 1983		
<b>Map Zone:</b>	Colorado Northern Zone		

Site	Sheley Pad				
Site Position:		Northing:	1,302,549.65 usft	Latitude:	40.162344
From:	Lat/Long	Easting:	3,167,287.72 usft	Longitude:	-104.901442
Position Uncertainty:	0.00 usft	Slot Radius:	13-3/16 "	Grid Convergence:	0.39 °

Well	SHELEY 3F-4H-M267					
Well Position	+N/-S	0.00 usft	Northing:	1,302,479.70 usft	Latitude:	40.162152
	+E/-W	0.00 usft	Easting:	3,167,287.91 usft	Longitude:	-104.901443
Position Uncertainty		0.00 usft	Wellhead Elevation:		Ground Level:	4,911.00 usft

<b>Wellbore</b>	Wellbore #1				
<b>Magnetics</b>	<b>Model Name</b>	<b>Sample Date</b>	<b>Declination (°)</b>	<b>Dip Angle (°)</b>	<b>Field Strength (nT)</b>
	IGRF2015	5/24/2018	8.16	66.62	52,146.95142271

<b>Design</b>	Plan #2 25Jun18 kjs			
<b>Audit Notes:</b>				
<b>Version:</b>	<b>Phase:</b>	PLAN	<b>Tie On Depth:</b>	0.00
<b>Vertical Section:</b>	<b>Depth From (TVD) (usft)</b>	<b>+N/-S (usft)</b>	<b>+E/-W (usft)</b>	<b>Direction (°)</b>
	0.00	0.00	0.00	85.44

<b>Plan Survey Tool Program</b>	<b>Date</b>	6/29/2018		
<b>Depth From (usft)</b>	<b>Depth To (usft)</b>	<b>Survey (Wellbore)</b>	<b>Tool Name</b>	<b>Remarks</b>
1	0.00	12,488.73 Plan #2 25Jun18 kjs (Wellbore #	MWD	
			OWSG MWD - Standard	

<b>Plan Sections</b>										
<b>Measured Depth (usft)</b>	<b>Inclination (°)</b>	<b>Azimuth (°)</b>	<b>Vertical Depth (usft)</b>	<b>+N/-S (usft)</b>	<b>+E/-W (usft)</b>	<b>Dogleg Rate (°/100usft)</b>	<b>Build Rate (°/100usft)</b>	<b>Turn Rate (°/100usft)</b>	<b>TFO (°)</b>	<b>Target</b>
0.00	0.00	0.00	0.00	0.00	0.00	0.00	0.00	0.00	0.00	
350.00	0.00	0.00	350.00	0.00	0.00	0.00	0.00	0.00	0.00	
1,091.45	14.83	292.10	1,083.20	35.90	-88.40	2.00	2.00	0.00	292.10	
6,584.36	14.83	292.10	6,393.17	564.86	-1,390.92	0.00	0.00	0.00	0.00	
7,884.89	90.00	93.55	7,280.00	596.35	-692.83	8.00	5.78	12.41	160.86	SHELEY 3F-4H-M267
12,488.73	90.00	93.55	7,280.00	311.05	3,902.16	0.00	0.00	0.00	0.00	SHELEY 3F-4H-M267

<b>Database:</b>	EDM 5000.15 Single User Db	<b>Local Co-ordinate Reference:</b>	Well SHELEY 3F-4H-M267
<b>Company:</b>	Crestone Peak Resources	<b>TVD Reference:</b>	RKB @ 4934.00usft
<b>Project:</b>	Sec 4 T2N-R67W	<b>MD Reference:</b>	RKB @ 4934.00usft
<b>Site:</b>	Sheley Pad	<b>North Reference:</b>	True
<b>Well:</b>	SHELEY 3F-4H-M267	<b>Survey Calculation Method:</b>	Minimum Curvature
<b>Wellbore:</b>	Wellbore #1		
<b>Design:</b>	Plan #2 25Jun18 kjs		

Planned Survey										
Measured Depth (usft)	Inclination (°)	Azimuth (°)	Vertical Depth (usft)	+N/-S (usft)	+E/-W (usft)	Map Northing (usft)	Map Easting (usft)	Latitude	Longitude	
0.00	0.00	0.00	0.00	0.00	0.00	1,302,479.70	3,167,287.91	40.162152	-104.901443	
100.00	0.00	0.00	100.00	0.00	0.00	1,302,479.70	3,167,287.91	40.162152	-104.901443	
200.00	0.00	0.00	200.00	0.00	0.00	1,302,479.70	3,167,287.91	40.162152	-104.901443	
300.00	0.00	0.00	300.00	0.00	0.00	1,302,479.70	3,167,287.91	40.162152	-104.901443	
350.00	0.00	0.00	350.00	0.00	0.00	1,302,479.70	3,167,287.91	40.162152	-104.901443	
Start Build 2.00										
400.00	1.00	292.10	400.00	0.16	-0.40	1,302,479.86	3,167,287.51	40.162153	-104.901445	
500.00	3.00	292.10	499.93	1.48	-3.64	1,302,481.15	3,167,284.26	40.162156	-104.901456	
600.00	5.00	292.10	599.68	4.10	-10.10	1,302,483.73	3,167,277.78	40.162163	-104.901479	
700.00	7.00	292.10	699.13	8.03	-19.78	1,302,487.60	3,167,268.07	40.162174	-104.901514	
800.00	9.00	292.10	798.15	13.27	-32.68	1,302,492.75	3,167,255.14	40.162188	-104.901560	
900.00	11.00	292.10	896.63	19.80	-48.77	1,302,499.17	3,167,239.01	40.162206	-104.901618	
1,000.00	13.00	292.10	994.44	27.63	-68.03	1,302,506.87	3,167,219.70	40.162228	-104.901687	
1,091.45	14.83	292.10	1,083.20	35.90	-88.40	1,302,515.00	3,167,199.27	40.162251	-104.901760	
Hold 14.83 Inc, 292.1 Az										
1,100.00	14.83	292.10	1,091.47	36.72	-90.43	1,302,515.81	3,167,197.24	40.162253	-104.901767	
1,200.00	14.83	292.10	1,188.13	46.35	-114.14	1,302,525.28	3,167,173.46	40.162279	-104.901852	
1,300.00	14.83	292.10	1,284.80	55.98	-137.86	1,302,534.75	3,167,149.68	40.162306	-104.901937	
1,400.00	14.83	292.10	1,381.47	65.61	-161.57	1,302,544.22	3,167,125.90	40.162332	-104.902021	
1,500.00	14.83	292.10	1,478.14	75.24	-185.28	1,302,553.69	3,167,102.13	40.162359	-104.902106	
1,600.00	14.83	292.10	1,574.81	84.87	-208.99	1,302,563.16	3,167,078.35	40.162385	-104.902191	
1,700.00	14.83	292.10	1,671.48	94.50	-232.71	1,302,572.63	3,167,054.57	40.162411	-104.902276	
1,800.00	14.83	292.10	1,768.15	104.13	-256.42	1,302,582.10	3,167,030.80	40.162438	-104.902361	
1,900.00	14.83	292.10	1,864.82	113.76	-280.13	1,302,591.57	3,167,007.02	40.162464	-104.902446	
2,000.00	14.83	292.10	1,961.49	123.39	-303.84	1,302,601.04	3,166,983.24	40.162491	-104.902530	
2,100.00	14.83	292.10	2,058.16	133.02	-327.56	1,302,610.51	3,166,959.46	40.162517	-104.902615	
2,200.00	14.83	292.10	2,154.83	142.65	-351.27	1,302,619.98	3,166,935.69	40.162544	-104.902700	
2,300.00	14.83	292.10	2,251.50	152.28	-374.98	1,302,629.45	3,166,911.91	40.162570	-104.902785	
2,400.00	14.83	292.10	2,348.17	161.91	-398.70	1,302,638.92	3,166,888.13	40.162597	-104.902870	
2,500.00	14.83	292.10	2,444.84	171.54	-422.41	1,302,648.39	3,166,864.36	40.162623	-104.902955	
2,600.00	14.83	292.10	2,541.51	181.17	-446.12	1,302,657.85	3,166,840.58	40.162649	-104.903039	
2,700.00	14.83	292.10	2,638.18	190.80	-469.83	1,302,667.32	3,166,816.80	40.162676	-104.903124	
2,800.00	14.83	292.10	2,734.85	200.43	-493.55	1,302,676.79	3,166,793.02	40.162702	-104.903209	
2,900.00	14.83	292.10	2,831.51	210.06	-517.26	1,302,686.26	3,166,769.25	40.162729	-104.903294	
3,000.00	14.83	292.10	2,928.18	219.69	-540.97	1,302,695.73	3,166,745.47	40.162755	-104.903379	
3,100.00	14.83	292.10	3,024.85	229.32	-564.68	1,302,705.20	3,166,721.69	40.162782	-104.903464	
3,200.00	14.83	292.10	3,121.52	238.95	-588.40	1,302,714.67	3,166,697.91	40.162808	-104.903549	
3,300.00	14.83	292.10	3,218.19	248.58	-612.11	1,302,724.14	3,166,674.14	40.162834	-104.903633	
3,400.00	14.83	292.10	3,314.86	258.21	-635.82	1,302,733.61	3,166,650.36	40.162861	-104.903718	
3,500.00	14.83	292.10	3,411.53	267.84	-659.54	1,302,743.08	3,166,626.58	40.162887	-104.903803	
3,600.00	14.83	292.10	3,508.20	277.47	-683.25	1,302,752.55	3,166,602.81	40.162914	-104.903888	
3,700.00	14.83	292.10	3,604.87	287.10	-706.96	1,302,762.02	3,166,579.03	40.162940	-104.903973	
3,800.00	14.83	292.10	3,701.54	296.73	-730.67	1,302,771.49	3,166,555.25	40.162967	-104.904058	
3,900.00	14.83	292.10	3,798.21	306.36	-754.39	1,302,780.96	3,166,531.47	40.162993	-104.904142	
4,000.00	14.83	292.10	3,894.88	315.99	-778.10	1,302,790.43	3,166,507.70	40.163019	-104.904227	
4,100.00	14.83	292.10	3,991.55	325.62	-801.81	1,302,799.90	3,166,483.92	40.163046	-104.904312	
4,200.00	14.83	292.10	4,088.22	335.25	-825.52	1,302,809.37	3,166,460.14	40.163072	-104.904397	
4,300.00	14.83	292.10	4,184.89	344.88	-849.24	1,302,818.84	3,166,436.37	40.163099	-104.904482	
4,400.00	14.83	292.10	4,281.56	354.51	-872.95	1,302,828.31	3,166,412.59	40.163125	-104.904567	
4,500.00	14.83	292.10	4,378.23	364.14	-896.66	1,302,837.78	3,166,388.81	40.163152	-104.904652	
4,600.00	14.83	292.10	4,474.89	373.77	-920.37	1,302,847.25	3,166,365.03	40.163178	-104.904736	
4,700.00	14.83	292.10	4,571.56	383.40	-944.09	1,302,856.72	3,166,341.26	40.163204	-104.904821	
4,800.00	14.83	292.10	4,668.23	393.03	-967.80	1,302,866.18	3,166,317.48	40.163231	-104.904906	
4,900.00	14.83	292.10	4,764.90	402.66	-991.51	1,302,875.65	3,166,293.70	40.163257	-104.904991	

<b>Database:</b>	EDM 5000.15 Single User Db	<b>Local Co-ordinate Reference:</b>	Well SHELEY 3F-4H-M267
<b>Company:</b>	Crestone Peak Resources	<b>TVD Reference:</b>	RKB @ 4934.00usft
<b>Project:</b>	Sec 4 T2N-R67W	<b>MD Reference:</b>	RKB @ 4934.00usft
<b>Site:</b>	Sheley Pad	<b>North Reference:</b>	True
<b>Well:</b>	SHELEY 3F-4H-M267	<b>Survey Calculation Method:</b>	Minimum Curvature
<b>Wellbore:</b>	Wellbore #1		
<b>Design:</b>	Plan #2 25Jun18 kjs		

Planned Survey										
Measured Depth (usft)	Inclination (°)	Azimuth (°)	Vertical Depth (usft)	+N/-S (usft)	+E/-W (usft)	Map Northing (usft)	Map Easting (usft)	Latitude	Longitude	
5,000.00	14.83	292.10	4,861.57	412.29	-1,015.23	1,302,885.12	3,166,269.93	40.163284	-104.905076	
5,100.00	14.83	292.10	4,958.24	421.92	-1,038.94	1,302,894.59	3,166,246.15	40.163310	-104.905161	
5,200.00	14.83	292.10	5,054.91	431.55	-1,062.65	1,302,904.06	3,166,222.37	40.163337	-104.905245	
5,300.00	14.83	292.10	5,151.58	441.18	-1,086.36	1,302,913.53	3,166,198.59	40.163363	-104.905330	
5,400.00	14.83	292.10	5,248.25	450.81	-1,110.08	1,302,923.00	3,166,174.82	40.163390	-104.905415	
5,500.00	14.83	292.10	5,344.92	460.44	-1,133.79	1,302,932.47	3,166,151.04	40.163416	-104.905500	
5,600.00	14.83	292.10	5,441.59	470.07	-1,157.50	1,302,941.94	3,166,127.26	40.163442	-104.905585	
5,700.00	14.83	292.10	5,538.26	479.70	-1,181.21	1,302,951.41	3,166,103.49	40.163469	-104.905670	
5,800.00	14.83	292.10	5,634.93	489.33	-1,204.93	1,302,960.88	3,166,079.71	40.163495	-104.905755	
5,900.00	14.83	292.10	5,731.60	498.96	-1,228.64	1,302,970.35	3,166,055.93	40.163522	-104.905839	
6,000.00	14.83	292.10	5,828.27	508.58	-1,252.35	1,302,979.82	3,166,032.15	40.163548	-104.905924	
6,100.00	14.83	292.10	5,924.94	518.21	-1,276.07	1,302,989.29	3,166,008.38	40.163575	-104.906009	
6,200.00	14.83	292.10	6,021.61	527.84	-1,299.78	1,302,998.76	3,165,984.60	40.163601	-104.906094	
6,300.00	14.83	292.10	6,118.27	537.47	-1,323.49	1,303,008.23	3,165,960.82	40.163627	-104.906179	
6,400.00	14.83	292.10	6,214.94	547.10	-1,347.20	1,303,017.70	3,165,937.05	40.163654	-104.906264	
6,500.00	14.83	292.10	6,311.61	556.73	-1,370.92	1,303,027.17	3,165,913.27	40.163680	-104.906348	
6,584.36	14.83	292.10	6,393.17	564.86	-1,390.92	1,303,035.16	3,165,893.21	40.163703	-104.906420	
KOP 8/100										
6,600.00	13.65	293.84	6,408.32	566.36	-1,394.46	1,303,036.63	3,165,889.66	40.163707	-104.906433	
6,700.00	6.79	318.59	6,506.72	575.57	-1,409.19	1,303,045.75	3,165,874.87	40.163732	-104.906485	
6,800.00	5.78	37.29	6,606.28	584.03	-1,410.05	1,303,054.20	3,165,873.95	40.163755	-104.906489	
6,900.00	12.19	70.60	6,705.06	591.56	-1,397.02	1,303,061.81	3,165,886.93	40.163776	-104.906442	
7,000.00	19.78	80.01	6,801.13	598.01	-1,370.36	1,303,068.44	3,165,913.55	40.163794	-104.906346	
7,100.00	27.60	84.28	6,892.64	603.26	-1,330.58	1,303,073.96	3,165,953.29	40.163808	-104.906204	
7,200.00	35.49	86.77	6,977.80	607.21	-1,278.46	1,303,078.27	3,166,005.38	40.163819	-104.906018	
7,300.00	43.42	88.45	7,054.95	609.78	-1,215.01	1,303,081.26	3,166,068.81	40.163826	-104.905791	
7,400.00	51.37	89.69	7,122.59	610.92	-1,141.48	1,303,082.90	3,166,142.34	40.163829	-104.905528	
7,500.00	59.33	90.69	7,179.40	610.61	-1,059.28	1,303,083.15	3,166,224.53	40.163828	-104.905233	
7,600.00	67.29	91.53	7,224.28	608.86	-970.03	1,303,082.00	3,166,313.80	40.163823	-104.904914	
7,700.00	75.26	92.28	7,256.35	605.69	-875.45	1,303,079.47	3,166,408.39	40.163815	-104.904576	
7,800.00	83.23	92.98	7,274.99	601.18	-777.39	1,303,075.62	3,166,506.48	40.163802	-104.904225	
7,884.89	90.00	93.55	7,280.00	596.35	-692.83	1,303,071.36	3,166,591.07	40.163789	-104.903922	
LP 90 Inc, 93.5 Az - SHELEY 3F-4H-M267 TPZ										
7,900.00	90.00	93.55	7,280.00	595.41	-677.75	1,303,070.52	3,166,606.16	40.163787	-104.903868	
8,000.00	90.00	93.55	7,280.00	589.22	-577.94	1,303,065.00	3,166,706.00	40.163770	-104.903511	
8,100.00	90.00	93.55	7,280.00	583.02	-478.14	1,303,059.48	3,166,805.85	40.163753	-104.903154	
8,200.00	90.00	93.55	7,280.00	576.82	-378.33	1,303,053.96	3,166,905.70	40.163736	-104.902797	
8,300.00	90.00	93.55	7,280.00	570.63	-278.52	1,303,048.43	3,167,005.54	40.163718	-104.902440	
8,400.00	90.00	93.55	7,280.00	564.43	-178.71	1,303,042.91	3,167,105.39	40.163701	-104.902083	
8,500.00	90.00	93.55	7,280.00	558.23	-78.91	1,303,037.39	3,167,205.24	40.163684	-104.901726	
8,600.00	90.00	93.55	7,280.00	552.04	20.90	1,303,031.86	3,167,305.09	40.163667	-104.901368	
8,700.00	90.00	93.55	7,280.00	545.84	120.71	1,303,026.34	3,167,404.93	40.163650	-104.901011	
8,800.00	90.00	93.55	7,280.00	539.64	220.52	1,303,020.82	3,167,504.78	40.163633	-104.900654	
8,900.00	90.00	93.55	7,280.00	533.44	320.33	1,303,015.29	3,167,604.63	40.163616	-104.900297	
9,000.00	90.00	93.55	7,280.00	527.25	420.13	1,303,009.77	3,167,704.48	40.163599	-104.899940	
9,100.00	90.00	93.55	7,280.00	521.05	519.94	1,303,004.25	3,167,804.32	40.163582	-104.899583	
9,200.00	90.00	93.55	7,280.00	514.85	619.75	1,302,998.72	3,167,904.17	40.163565	-104.899226	
9,300.00	90.00	93.55	7,280.00	508.66	719.56	1,302,993.20	3,168,004.02	40.163548	-104.898869	
9,400.00	90.00	93.55	7,280.00	502.46	819.36	1,302,987.68	3,168,103.87	40.163531	-104.898512	
9,500.00	90.00	93.55	7,280.00	496.26	919.17	1,302,982.15	3,168,203.71	40.163514	-104.898154	
9,600.00	90.00	93.55	7,280.00	490.07	1,018.98	1,302,976.63	3,168,303.56	40.163497	-104.897797	
9,700.00	90.00	93.55	7,280.00	483.87	1,118.79	1,302,971.11	3,168,403.41	40.163480	-104.897440	
9,800.00	90.00	93.55	7,280.00	477.67	1,218.60	1,302,965.58	3,168,503.26	40.163463	-104.897083	
9,900.00	90.00	93.55	7,280.00	471.47	1,318.40	1,302,960.06	3,168,603.10	40.163446	-104.896726	

<b>Database:</b>	EDM 5000.15 Single User Db	<b>Local Co-ordinate Reference:</b>	Well SHELEY 3F-4H-M267
<b>Company:</b>	Crestone Peak Resources	<b>TVD Reference:</b>	RKB @ 4934.00usft
<b>Project:</b>	Sec 4 T2N-R67W	<b>MD Reference:</b>	RKB @ 4934.00usft
<b>Site:</b>	Sheley Pad	<b>North Reference:</b>	True
<b>Well:</b>	SHELEY 3F-4H-M267	<b>Survey Calculation Method:</b>	Minimum Curvature
<b>Wellbore:</b>	Wellbore #1		
<b>Design:</b>	Plan #2 25Jun18 kjs		

Planned Survey									
Measured Depth (usft)	Inclination (°)	Azimuth (°)	Vertical Depth (usft)	+N/-S (usft)	+E/-W (usft)	Map Northing (usft)	Map Easting (usft)	Latitude	Longitude
10,000.00	90.00	93.55	7,280.00	465.28	1,418.21	1,302,954.54	3,168,702.95	40.163429	-104.896369
10,100.00	90.00	93.55	7,280.00	459.08	1,518.02	1,302,949.02	3,168,802.80	40.163412	-104.896012
10,200.00	90.00	93.55	7,280.00	452.88	1,617.83	1,302,943.49	3,168,902.64	40.163395	-104.895655
10,300.00	90.00	93.55	7,280.00	446.69	1,717.63	1,302,937.97	3,169,002.49	40.163378	-104.895297
10,400.00	90.00	93.55	7,280.00	440.49	1,817.44	1,302,932.45	3,169,102.34	40.163361	-104.894940
10,500.00	90.00	93.55	7,280.00	434.29	1,917.25	1,302,926.92	3,169,202.19	40.163344	-104.894583
10,600.00	90.00	93.55	7,280.00	428.10	2,017.06	1,302,921.40	3,169,302.03	40.163327	-104.894226
10,700.00	90.00	93.55	7,280.00	421.90	2,116.87	1,302,915.88	3,169,401.88	40.163310	-104.893869
10,800.00	90.00	93.55	7,280.00	415.70	2,216.67	1,302,910.35	3,169,501.73	40.163293	-104.893512
10,900.00	90.00	93.55	7,280.00	409.50	2,316.48	1,302,904.83	3,169,601.58	40.163276	-104.893155
11,000.00	90.00	93.55	7,280.00	403.31	2,416.29	1,302,899.31	3,169,701.42	40.163259	-104.892798
11,100.00	90.00	93.55	7,280.00	397.11	2,516.10	1,302,893.78	3,169,801.27	40.163242	-104.892441
11,200.00	90.00	93.55	7,280.00	390.91	2,615.90	1,302,888.26	3,169,901.12	40.163225	-104.892083
11,300.00	90.00	93.55	7,280.00	384.72	2,715.71	1,302,882.74	3,170,000.97	40.163208	-104.891726
11,400.00	90.00	93.55	7,280.00	378.52	2,815.52	1,302,877.21	3,170,100.81	40.163191	-104.891369
11,500.00	90.00	93.55	7,280.00	372.32	2,915.33	1,302,871.69	3,170,200.66	40.163174	-104.891012
11,600.00	90.00	93.55	7,280.00	366.13	3,015.14	1,302,866.17	3,170,300.51	40.163157	-104.890655
11,700.00	90.00	93.55	7,280.00	359.93	3,114.94	1,302,860.65	3,170,400.36	40.163140	-104.890298
11,800.00	90.00	93.55	7,280.00	353.73	3,214.75	1,302,855.12	3,170,500.20	40.163123	-104.889941
11,900.00	90.00	93.55	7,280.00	347.53	3,314.56	1,302,849.60	3,170,600.05	40.163105	-104.889584
12,000.00	90.00	93.55	7,280.00	341.34	3,414.37	1,302,844.08	3,170,699.90	40.163088	-104.889227
12,100.00	90.00	93.55	7,280.00	335.14	3,514.18	1,302,838.55	3,170,799.74	40.163071	-104.888869
12,200.00	90.00	93.55	7,280.00	328.94	3,613.98	1,302,833.03	3,170,899.59	40.163054	-104.888512
12,300.00	90.00	93.55	7,280.00	322.75	3,713.79	1,302,827.51	3,170,999.44	40.163037	-104.888155
12,400.00	90.00	93.55	7,280.00	316.55	3,813.60	1,302,821.98	3,171,099.29	40.163020	-104.887798
12,488.73	90.00	93.55	7,280.00	311.05	3,902.16	1,302,817.08	3,171,187.88	40.163005	-104.887481
TD at 12488.73 - SHELEY 3F-4H-M267 BHL									

Design Targets									
Target Name - hit/miss target - Shape	Dip Angle (°)	Dip Dir. (°)	TVD (usft)	+N/-S (usft)	+E/-W (usft)	Northing (usft)	Easting (usft)	Latitude	Longitude
SHELEY 3F-4H-M267 B - plan hits target center - Point	0.00	0.00	7,280.00	311.05	3,902.16	1,302,817.08	3,171,187.88	40.163005	-104.887481
SHELEY 3F-4H-M267 T - plan hits target center - Point	0.00	0.00	7,280.00	596.35	-692.83	1,303,071.36	3,166,591.07	40.163789	-104.903922

Plan Annotations				
Measured Depth (usft)	Vertical Depth (usft)	+N/-S (usft)	+E/-W (usft)	Comment
350.00	350.00	0.00	0.00	Start Build 2.00
1,091.45	1,083.20	35.90	-88.40	Hold 14.83 Inc, 292.1 Az
6,584.36	6,393.17	564.86	-1,390.92	KOP 8/100
7,884.89	7,280.00	596.35	-692.83	LP 90 Inc, 93.5 Az
12,488.73	7,280.00	311.05	3,902.16	TD at 12488.73