



Crestone Peak Resources

Well Name:

SHELEY 3E-4H-M267

Project Name:

Sec 4 T2N-R67W

Pad Name:

Sheley Pad

ANNOTATIONS

MD	Inc	Azi	TVD	+N/-S	+E/-W	V Sect	Departure	Annotation
350.00	0.00	0.00	350.00	0.00	0.00	0.00	0.00	Start Build 2.00
1108.27	15.13	298.13	1097.52	46.78	-87.53	-76.19	99.24	Hold 15.13 Inc, 298.13 Az
6759.79	15.13	298.13	6555.18	742.19	-1388.52	-1208.69	1574.43	KOP 8/100
8051.79	90.00	90.45	7430.00	846.61	-690.87	-504.38	2337.32	LP 90 Inc, 90.45 Az
12649.06	90.00	90.45	7430.00	810.85	3906.26	3989.53	6933.59	TD at 12649.06

Geodetic Datum:

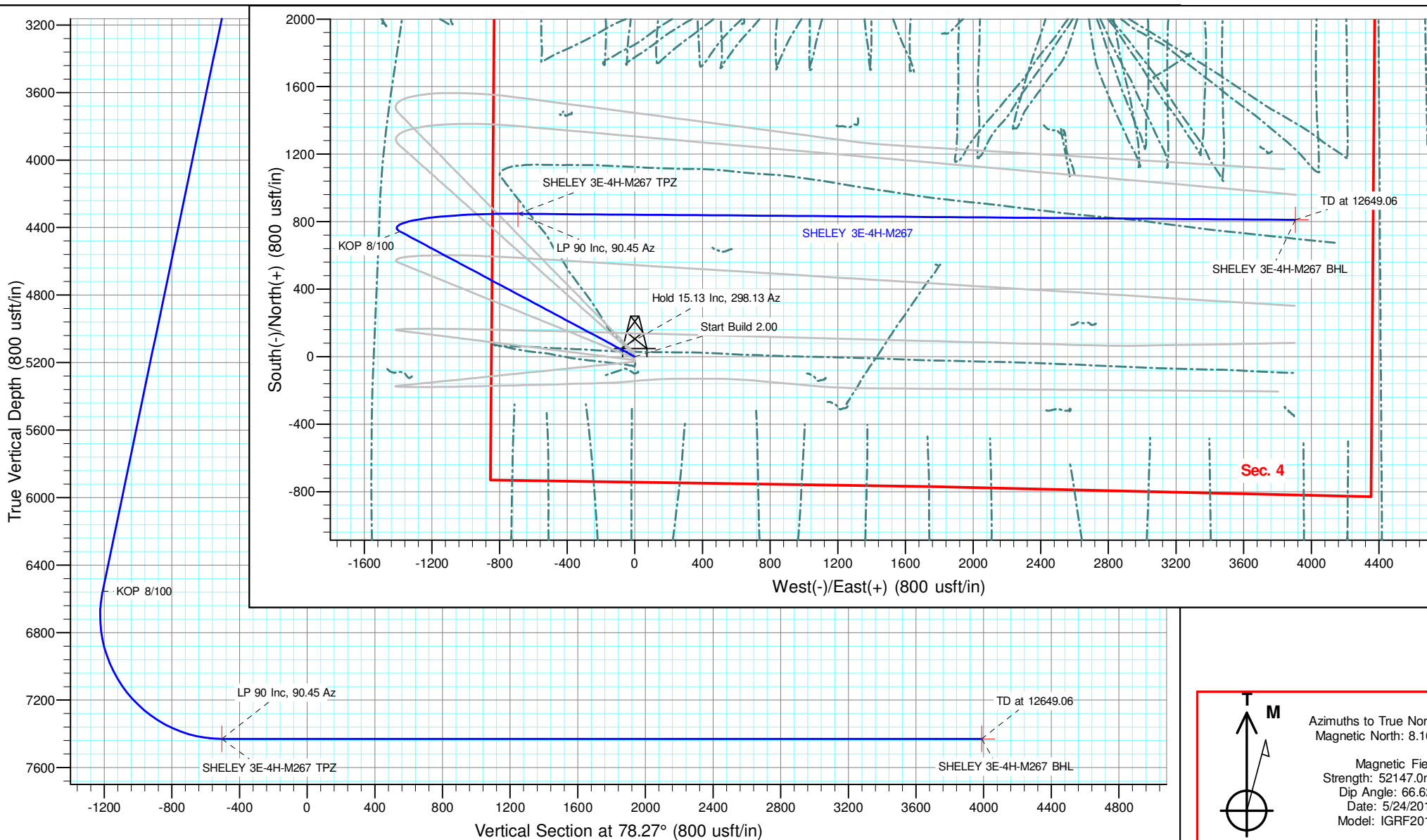
North American Datum 1983
US State Plane 1983, Colorado Northern Zone

Elevation:

Ground Elevation: 4910.00
KB Elevation: RKB @ 4933.00usft

DESIGN TARGET DETAILS

Name	TVD	+N/-S	+E/-W	Northing	Easting	Latitude	Longitude	Shape
SHELEY 3E-4H-M267 BHL	7430.00	810.84	3906.27	1303326.73	3171188.55	40.164404	-104.887466	Point
SHELEY 3E-4H-M267 TPZ	7430.00	846.61	-690.87	1303331.46	3166591.28	40.164503	-104.903915	Point





Crestone Peak Resources

Sec 4 T2N-R67W

Sheley Pad

SHELEY 3E-4H-M267

Wellbore #1

Plan: Plan #2 25Jun18 kjs

Standard Planning Report - Geographic

29 June, 2018

Database:	EDM 5000.15 Single User Db	Local Co-ordinate Reference:	Well SHELEY 3E-4H-M267
Company:	Crestone Peak Resources	TVD Reference:	RKB @ 4933.00usft
Project:	Sec 4 T2N-R67W	MD Reference:	RKB @ 4933.00usft
Site:	Sheley Pad	North Reference:	True
Well:	SHELEY 3E-4H-M267	Survey Calculation Method:	Minimum Curvature
Wellbore:	Wellbore #1		
Design:	Plan #2 25Jun18 kjs		

Project	Sec 4 T2N-R67W, Weld County, CO		
Map System:	US State Plane 1983	System Datum:	Mean Sea Level
Geo Datum:	North American Datum 1983		
Map Zone:	Colorado Northern Zone		

Site	Sheley Pad				
Site Position:		Northing:	1,302,549.65 usft	Latitude:	40.162344
From:	Lat/Long	Easting:	3,167,287.72 usft	Longitude:	-104.901442
Position Uncertainty:	0.00 usft	Slot Radius:	13-3/16 "	Grid Convergence:	0.39 °

Well	SHELEY 3E-4H-M267					
Well Position	+N/-S	0.00 usft	Northing:	1,302,489.54 usft	Latitude:	40.162179
	+E/-W	0.00 usft	Easting:	3,167,287.85 usft	Longitude:	-104.901443
Position Uncertainty		0.00 usft	Wellhead Elevation:		Ground Level:	4,910.00 usft

Wellbore	Wellbore #1				
Magnetics	Model Name	Sample Date	Declination (°)	Dip Angle (°)	Field Strength (nT)
	IGRF2015	5/24/2018	8.16	66.62	52,146.95747147

Design	Plan #2 25Jun18 kjs			
Audit Notes:				
Version:	Phase:	PLAN	Tie On Depth:	0.00
Vertical Section:	Depth From (TVD) (usft)	+N/-S (usft)	+E/-W (usft)	Direction (°)
	0.00	0.00	0.00	78.27

Plan Survey Tool Program	Date	6/29/2018		
Depth From (usft)	Depth To (usft)	Survey (Wellbore)	Tool Name	Remarks
1	0.00	12,648.10 Plan #2 25Jun18 kjs (Wellbore #	MWD	
			OWSG MWD - Standard	

Plan Sections										
Measured Depth (usft)	Inclination (°)	Azimuth (°)	Vertical Depth (usft)	+N/-S (usft)	+E/-W (usft)	Dogleg Rate (°/100usft)	Build Rate (°/100usft)	Turn Rate (°/100usft)	TFO (°)	Target
0.00	0.00	0.00	0.00	0.00	0.00	0.00	0.00	0.00	0.00	
350.00	0.00	0.00	350.00	0.00	0.00	0.00	0.00	0.00	0.00	
1,106.27	15.13	298.13	1,097.52	46.78	-87.53	2.00	2.00	0.00	298.13	
6,759.79	15.13	298.13	6,555.18	742.19	-1,388.52	0.00	0.00	0.00	0.00	
8,051.79	90.00	90.45	7,430.00	846.61	-690.87	8.00	5.80	11.79	151.48	SHELEY 3E-4H-M267
12,649.06	90.00	90.45	7,430.00	810.84	3,906.27	0.00	0.00	0.00	0.00	SHELEY 3E-4H-M267

Database:	EDM 5000.15 Single User Db	Local Co-ordinate Reference:	Well SHELEY 3E-4H-M267
Company:	Crestone Peak Resources	TVD Reference:	RKB @ 4933.00usft
Project:	Sec 4 T2N-R67W	MD Reference:	RKB @ 4933.00usft
Site:	Sheley Pad	North Reference:	True
Well:	SHELEY 3E-4H-M267	Survey Calculation Method:	Minimum Curvature
Wellbore:	Wellbore #1		
Design:	Plan #2 25Jun18 kjs		

Planned Survey										
Measured Depth (usft)	Inclination (°)	Azimuth (°)	Vertical Depth (usft)	+N/-S (usft)	+E/-W (usft)	Map Northing (usft)	Map Easting (usft)	Latitude	Longitude	
0.00	0.00	0.00	0.00	0.00	0.00	1,302,489.54	3,167,287.85	40.162179	-104.901443	
100.00	0.00	0.00	100.00	0.00	0.00	1,302,489.54	3,167,287.85	40.162179	-104.901443	
200.00	0.00	0.00	200.00	0.00	0.00	1,302,489.54	3,167,287.85	40.162179	-104.901443	
300.00	0.00	0.00	300.00	0.00	0.00	1,302,489.54	3,167,287.85	40.162179	-104.901443	
350.00	0.00	0.00	350.00	0.00	0.00	1,302,489.54	3,167,287.85	40.162179	-104.901443	
Start Build 2.00										
400.00	1.00	298.13	400.00	0.21	-0.38	1,302,489.74	3,167,287.46	40.162180	-104.901445	
500.00	3.00	298.13	499.93	1.85	-3.46	1,302,491.37	3,167,284.37	40.162184	-104.901456	
600.00	5.00	298.13	599.68	5.14	-9.61	1,302,494.61	3,167,278.20	40.162193	-104.901478	
700.00	7.00	298.13	699.13	10.07	-18.83	1,302,499.48	3,167,268.95	40.162207	-104.901511	
800.00	9.00	298.13	798.15	16.63	-31.11	1,302,505.95	3,167,256.63	40.162225	-104.901555	
900.00	11.00	298.13	896.63	24.81	-46.42	1,302,514.04	3,167,241.26	40.162247	-104.901609	
1,000.00	13.00	298.13	994.44	34.61	-64.75	1,302,523.71	3,167,222.86	40.162274	-104.901675	
1,100.00	15.00	298.13	1,091.46	46.02	-86.09	1,302,534.97	3,167,201.45	40.162305	-104.901751	
1,106.27	15.13	298.13	1,097.52	46.78	-87.53	1,302,535.73	3,167,200.01	40.162307	-104.901756	
Hold 15.13 Inc, 298.13 Az										
1,200.00	15.13	298.13	1,188.00	58.31	-109.09	1,302,547.11	3,167,178.36	40.162339	-104.901834	
1,300.00	15.13	298.13	1,284.54	70.61	-132.11	1,302,559.26	3,167,155.26	40.162373	-104.901916	
1,400.00	15.13	298.13	1,381.07	82.91	-155.12	1,302,571.40	3,167,132.17	40.162407	-104.901998	
1,500.00	15.13	298.13	1,477.61	95.21	-178.13	1,302,583.55	3,167,109.08	40.162440	-104.902081	
1,600.00	15.13	298.13	1,574.14	107.51	-201.14	1,302,595.69	3,167,085.98	40.162474	-104.902163	
1,700.00	15.13	298.13	1,670.68	119.82	-224.16	1,302,607.84	3,167,062.89	40.162508	-104.902245	
1,800.00	15.13	298.13	1,767.21	132.12	-247.17	1,302,619.98	3,167,039.79	40.162542	-104.902328	
1,900.00	15.13	298.13	1,863.75	144.42	-270.18	1,302,632.13	3,167,016.70	40.162576	-104.902410	
2,000.00	15.13	298.13	1,960.29	156.72	-293.19	1,302,644.27	3,166,993.60	40.162609	-104.902492	
2,100.00	15.13	298.13	2,056.82	169.02	-316.20	1,302,656.42	3,166,970.51	40.162643	-104.902575	
2,200.00	15.13	298.13	2,153.36	181.32	-339.22	1,302,668.56	3,166,947.41	40.162677	-104.902657	
2,300.00	15.13	298.13	2,249.89	193.62	-362.23	1,302,680.71	3,166,924.32	40.162711	-104.902739	
2,400.00	15.13	298.13	2,346.43	205.92	-385.24	1,302,692.85	3,166,901.22	40.162744	-104.902822	
2,500.00	15.13	298.13	2,442.96	218.22	-408.25	1,302,705.00	3,166,878.13	40.162778	-104.902904	
2,600.00	15.13	298.13	2,539.50	230.52	-431.26	1,302,717.14	3,166,855.04	40.162812	-104.902986	
2,700.00	15.13	298.13	2,636.04	242.82	-454.28	1,302,729.29	3,166,831.94	40.162846	-104.903069	
2,800.00	15.13	298.13	2,732.57	255.12	-477.29	1,302,741.43	3,166,808.85	40.162879	-104.903151	
2,900.00	15.13	298.13	2,829.11	267.42	-500.30	1,302,753.58	3,166,785.75	40.162913	-104.903233	
3,000.00	15.13	298.13	2,925.64	279.72	-523.31	1,302,765.72	3,166,762.66	40.162947	-104.903316	
3,100.00	15.13	298.13	3,022.18	292.02	-546.32	1,302,777.87	3,166,739.56	40.162981	-104.903398	
3,200.00	15.13	298.13	3,118.71	304.32	-569.34	1,302,790.01	3,166,716.47	40.163014	-104.903480	
3,300.00	15.13	298.13	3,215.25	316.62	-592.35	1,302,802.15	3,166,693.37	40.163048	-104.903563	
3,400.00	15.13	298.13	3,311.79	328.92	-615.36	1,302,814.30	3,166,670.28	40.163082	-104.903645	
3,500.00	15.13	298.13	3,408.32	341.22	-638.37	1,302,826.44	3,166,647.18	40.163116	-104.903727	
3,600.00	15.13	298.13	3,504.86	353.52	-661.38	1,302,838.59	3,166,624.09	40.163150	-104.903810	
3,700.00	15.13	298.13	3,601.39	365.82	-684.40	1,302,850.73	3,166,600.99	40.163183	-104.903892	
3,800.00	15.13	298.13	3,697.93	378.12	-707.41	1,302,862.88	3,166,577.90	40.163217	-104.903974	
3,900.00	15.13	298.13	3,794.46	390.42	-730.42	1,302,875.02	3,166,554.81	40.163251	-104.904057	
4,000.00	15.13	298.13	3,891.00	402.72	-753.43	1,302,887.17	3,166,531.71	40.163285	-104.904139	
4,100.00	15.13	298.13	3,987.54	415.03	-776.45	1,302,899.31	3,166,508.62	40.163318	-104.904221	
4,200.00	15.13	298.13	4,084.07	427.33	-799.46	1,302,911.46	3,166,485.52	40.163352	-104.904304	
4,300.00	15.13	298.13	4,180.61	439.63	-822.47	1,302,923.60	3,166,462.43	40.163386	-104.904386	
4,400.00	15.13	298.13	4,277.14	451.93	-845.48	1,302,935.75	3,166,439.33	40.163420	-104.904468	
4,500.00	15.13	298.13	4,373.68	464.23	-868.49	1,302,947.89	3,166,416.24	40.163453	-104.904551	
4,600.00	15.13	298.13	4,470.21	476.53	-891.51	1,302,960.04	3,166,393.14	40.163487	-104.904633	
4,700.00	15.13	298.13	4,566.75	488.83	-914.52	1,302,972.18	3,166,370.05	40.163521	-104.904715	
4,800.00	15.13	298.13	4,663.29	501.13	-937.53	1,302,984.33	3,166,346.95	40.163555	-104.904798	
4,900.00	15.13	298.13	4,759.82	513.43	-960.54	1,302,996.47	3,166,323.86	40.163588	-104.904880	

Database:	EDM 5000.15 Single User Db	Local Co-ordinate Reference:	Well SHELEY 3E-4H-M267
Company:	Crestone Peak Resources	TVD Reference:	RKB @ 4933.00usft
Project:	Sec 4 T2N-R67W	MD Reference:	RKB @ 4933.00usft
Site:	Sheley Pad	North Reference:	True
Well:	SHELEY 3E-4H-M267	Survey Calculation Method:	Minimum Curvature
Wellbore:	Wellbore #1		
Design:	Plan #2 25Jun18 kjs		

Planned Survey										
Measured Depth (usft)	Inclination (°)	Azimuth (°)	Vertical Depth (usft)	+N/-S (usft)	+E/-W (usft)	Map Northing (usft)	Map Easting (usft)	Latitude	Longitude	
5,000.00	15.13	298.13	4,856.36	525.73	-983.55	1,303,008.62	3,166,300.77	40.163622	-104.904962	
5,100.00	15.13	298.13	4,952.89	538.03	-1,006.57	1,303,020.76	3,166,277.67	40.163656	-104.905045	
5,200.00	15.13	298.13	5,049.43	550.33	-1,029.58	1,303,032.91	3,166,254.58	40.163690	-104.905127	
5,300.00	15.13	298.13	5,145.96	562.63	-1,052.59	1,303,045.05	3,166,231.48	40.163723	-104.905209	
5,400.00	15.13	298.13	5,242.50	574.93	-1,075.60	1,303,057.20	3,166,208.39	40.163757	-104.905292	
5,500.00	15.13	298.13	5,339.04	587.23	-1,098.61	1,303,069.34	3,166,185.29	40.163791	-104.905374	
5,600.00	15.13	298.13	5,435.57	599.53	-1,121.63	1,303,081.48	3,166,162.20	40.163825	-104.905457	
5,700.00	15.13	298.13	5,532.11	611.83	-1,144.64	1,303,093.63	3,166,139.10	40.163859	-104.905539	
5,800.00	15.13	298.13	5,628.64	624.13	-1,167.65	1,303,105.77	3,166,116.01	40.163892	-104.905621	
5,900.00	15.13	298.13	5,725.18	636.43	-1,190.66	1,303,117.92	3,166,092.91	40.163926	-104.905704	
6,000.00	15.13	298.13	5,821.71	648.73	-1,213.67	1,303,130.06	3,166,069.82	40.163960	-104.905786	
6,100.00	15.13	298.13	5,918.25	661.03	-1,236.69	1,303,142.21	3,166,046.72	40.163994	-104.905868	
6,200.00	15.13	298.13	6,014.79	673.33	-1,259.70	1,303,154.35	3,166,023.63	40.164027	-104.905951	
6,300.00	15.13	298.13	6,111.32	685.63	-1,282.71	1,303,166.50	3,166,000.54	40.164061	-104.906033	
6,400.00	15.13	298.13	6,207.86	697.93	-1,305.72	1,303,178.64	3,165,977.44	40.164095	-104.906115	
6,500.00	15.13	298.13	6,304.39	710.23	-1,328.73	1,303,190.79	3,165,954.35	40.164129	-104.906198	
6,600.00	15.13	298.13	6,400.93	722.54	-1,351.75	1,303,202.93	3,165,931.25	40.164162	-104.906280	
6,700.00	15.13	298.13	6,497.46	734.84	-1,374.76	1,303,215.08	3,165,908.16	40.164196	-104.906362	
6,759.79	15.13	298.13	6,555.18	742.19	-1,388.52	1,303,222.34	3,165,894.35	40.164216	-104.906411	
KOP 8/100										
6,800.00	12.39	305.30	6,594.24	747.16	-1,396.67	1,303,227.25	3,165,886.17	40.164230	-104.906441	
6,900.00	7.47	343.73	6,692.81	759.62	-1,407.26	1,303,239.64	3,165,875.49	40.164264	-104.906479	
7,000.00	9.24	39.91	6,791.90	772.03	-1,403.93	1,303,252.08	3,165,878.74	40.164298	-104.906467	
7,100.00	15.56	63.65	6,889.57	784.16	-1,386.73	1,303,264.32	3,165,895.85	40.164332	-104.906405	
7,200.00	22.94	73.19	6,983.94	795.77	-1,356.00	1,303,276.14	3,165,926.51	40.164363	-104.906295	
7,300.00	30.63	78.20	7,073.15	806.64	-1,312.34	1,303,287.30	3,165,970.09	40.164393	-104.906139	
7,400.00	38.43	81.34	7,155.48	816.54	-1,256.59	1,303,297.58	3,166,025.77	40.164420	-104.905939	
7,500.00	46.29	83.55	7,229.32	825.29	-1,189.85	1,303,306.78	3,166,092.45	40.164445	-104.905701	
7,600.00	54.18	85.25	7,293.24	832.72	-1,113.41	1,303,314.73	3,166,168.84	40.164465	-104.905427	
7,700.00	62.10	86.63	7,345.99	838.69	-1,028.75	1,303,321.26	3,166,253.45	40.164481	-104.905124	
7,800.00	70.02	87.83	7,386.54	843.07	-937.54	1,303,326.26	3,166,344.64	40.164493	-104.904798	
7,900.00	77.95	88.91	7,414.10	845.78	-841.53	1,303,329.62	3,166,440.62	40.164501	-104.904454	
8,000.00	85.89	89.93	7,428.14	846.78	-742.61	1,303,331.28	3,166,539.53	40.164504	-104.904100	
8,051.79	90.00	90.45	7,430.00	846.61	-690.87	1,303,331.46	3,166,591.28	40.164503	-104.903915	
LP 90 Inc, 90.45 Az - SHELEY 3E-4H-M267 TPZ										
8,100.00	90.00	90.45	7,430.00	846.23	-642.66	1,303,331.41	3,166,639.49	40.164502	-104.903743	
8,200.00	90.00	90.45	7,430.00	845.45	-542.66	1,303,331.31	3,166,739.49	40.164500	-104.903385	
8,300.00	90.00	90.45	7,430.00	844.68	-442.66	1,303,331.21	3,166,839.49	40.164498	-104.903027	
8,400.00	90.00	90.45	7,430.00	843.90	-342.67	1,303,331.10	3,166,939.49	40.164496	-104.902669	
8,500.00	90.00	90.45	7,430.00	843.12	-242.67	1,303,331.00	3,167,039.49	40.164494	-104.902312	
8,600.00	90.00	90.45	7,430.00	842.34	-142.67	1,303,330.90	3,167,139.49	40.164491	-104.901954	
8,700.00	90.00	90.45	7,430.00	841.56	-42.68	1,303,330.80	3,167,239.49	40.164489	-104.901596	
8,800.00	90.00	90.45	7,430.00	840.79	57.32	1,303,330.69	3,167,339.49	40.164487	-104.901238	
8,900.00	90.00	90.45	7,430.00	840.01	157.32	1,303,330.59	3,167,439.49	40.164485	-104.900880	
9,000.00	90.00	90.45	7,430.00	839.23	257.31	1,303,330.49	3,167,539.49	40.164483	-104.900523	
9,100.00	90.00	90.45	7,430.00	838.45	357.31	1,303,330.38	3,167,639.49	40.164481	-104.900165	
9,200.00	90.00	90.45	7,430.00	837.67	457.31	1,303,330.28	3,167,739.49	40.164479	-104.899807	
9,300.00	90.00	90.45	7,430.00	836.90	557.30	1,303,330.18	3,167,839.49	40.164476	-104.899449	
9,400.00	90.00	90.45	7,430.00	836.12	657.30	1,303,330.07	3,167,939.49	40.164474	-104.899091	
9,500.00	90.00	90.45	7,430.00	835.34	757.30	1,303,329.97	3,168,039.49	40.164472	-104.898734	
9,600.00	90.00	90.45	7,430.00	834.56	857.30	1,303,329.87	3,168,139.49	40.164470	-104.898376	
9,700.00	90.00	90.45	7,430.00	833.78	957.29	1,303,329.77	3,168,239.49	40.164468	-104.898018	
9,800.00	90.00	90.45	7,430.00	833.01	1,057.29	1,303,329.66	3,168,339.49	40.164466	-104.897660	
9,900.00	90.00	90.45	7,430.00	832.23	1,157.29	1,303,329.56	3,168,439.49	40.164464	-104.897302	

Database:	EDM 5000.15 Single User Db	Local Co-ordinate Reference:	Well SHELEY 3E-4H-M267
Company:	Crestone Peak Resources	TVD Reference:	RKB @ 4933.00usft
Project:	Sec 4 T2N-R67W	MD Reference:	RKB @ 4933.00usft
Site:	Sheley Pad	North Reference:	True
Well:	SHELEY 3E-4H-M267	Survey Calculation Method:	Minimum Curvature
Wellbore:	Wellbore #1		
Design:	Plan #2 25Jun18 kjs		

Planned Survey										
Measured Depth (usft)	Inclination (°)	Azimuth (°)	Vertical Depth (usft)	+N/-S (usft)	+E/-W (usft)	Map Northing (usft)	Map Easting (usft)	Latitude	Longitude	
10,000.00	90.00	90.45	7,430.00	831.45	1,257.28	1,303,329.46	3,168,539.49	40.164461	-104.896945	
10,100.00	90.00	90.45	7,430.00	830.67	1,357.28	1,303,329.35	3,168,639.49	40.164459	-104.896587	
10,200.00	90.00	90.45	7,430.00	829.89	1,457.28	1,303,329.25	3,168,739.49	40.164457	-104.896229	
10,300.00	90.00	90.45	7,430.00	829.12	1,557.27	1,303,329.15	3,168,839.49	40.164455	-104.895871	
10,400.00	90.00	90.45	7,430.00	828.34	1,657.27	1,303,329.04	3,168,939.49	40.164453	-104.895513	
10,500.00	90.00	90.45	7,430.00	827.56	1,757.27	1,303,328.94	3,169,039.49	40.164451	-104.895156	
10,600.00	90.00	90.45	7,430.00	826.78	1,857.27	1,303,328.84	3,169,139.49	40.164449	-104.894798	
10,700.00	90.00	90.45	7,430.00	826.00	1,957.26	1,303,328.74	3,169,239.49	40.164446	-104.894440	
10,800.00	90.00	90.45	7,430.00	825.23	2,057.26	1,303,328.63	3,169,339.49	40.164444	-104.894082	
10,900.00	90.00	90.45	7,430.00	824.45	2,157.26	1,303,328.53	3,169,439.49	40.164442	-104.893724	
11,000.00	90.00	90.45	7,430.00	823.67	2,257.25	1,303,328.43	3,169,539.49	40.164440	-104.893367	
11,100.00	90.00	90.45	7,430.00	822.89	2,357.25	1,303,328.32	3,169,639.49	40.164438	-104.893009	
11,200.00	90.00	90.45	7,430.00	822.12	2,457.25	1,303,328.22	3,169,739.49	40.164436	-104.892651	
11,300.00	90.00	90.45	7,430.00	821.34	2,557.24	1,303,328.12	3,169,839.49	40.164433	-104.892293	
11,400.00	90.00	90.45	7,430.00	820.56	2,657.24	1,303,328.02	3,169,939.49	40.164431	-104.891935	
11,500.00	90.00	90.45	7,430.00	819.78	2,757.24	1,303,327.91	3,170,039.49	40.164429	-104.891578	
11,600.00	90.00	90.45	7,430.00	819.00	2,857.24	1,303,327.81	3,170,139.49	40.164427	-104.891220	
11,700.00	90.00	90.45	7,430.00	818.23	2,957.23	1,303,327.71	3,170,239.49	40.164425	-104.890862	
11,800.00	90.00	90.45	7,430.00	817.45	3,057.23	1,303,327.60	3,170,339.49	40.164423	-104.890504	
11,900.00	90.00	90.45	7,430.00	816.67	3,157.23	1,303,327.50	3,170,439.49	40.164420	-104.890146	
12,000.00	90.00	90.45	7,430.00	815.89	3,257.22	1,303,327.40	3,170,539.49	40.164418	-104.889789	
12,100.00	90.00	90.45	7,430.00	815.11	3,357.22	1,303,327.29	3,170,639.49	40.164416	-104.889431	
12,200.00	90.00	90.45	7,430.00	814.34	3,457.22	1,303,327.19	3,170,739.49	40.164414	-104.889073	
12,300.00	90.00	90.45	7,430.00	813.56	3,557.21	1,303,327.09	3,170,839.49	40.164412	-104.888715	
12,400.00	90.00	90.45	7,430.00	812.78	3,657.21	1,303,326.99	3,170,939.49	40.164410	-104.888357	
12,500.00	90.00	90.45	7,430.00	812.00	3,757.21	1,303,326.88	3,171,039.49	40.164407	-104.888000	
12,600.00	90.00	90.45	7,430.00	811.22	3,857.21	1,303,326.78	3,171,139.49	40.164405	-104.887642	
12,649.06	90.00	90.45	7,430.00	810.84	3,906.27	1,303,326.73	3,171,188.55	40.164404	-104.887466	

TD at 12649.06 - SHELEY 3E-4H-M267 BHL

Design Targets										
Target Name	Dip Angle (°)	Dip Dir. (°)	TVD (usft)	+N/-S (usft)	+E/-W (usft)	Northing (usft)	Easting (usft)	Latitude	Longitude	
SHELEY 3E-4H-M267 T - hit/miss target - Shape - plan hits target center - Point	0.00	0.00	7,430.00	846.61	-690.87	1,303,331.46	3,166,591.28	40.164503	-104.903915	
SHELEY 3E-4H-M267 B - plan hits target center - Point	0.00	0.00	7,430.00	810.84	3,906.27	1,303,326.73	3,171,188.55	40.164404	-104.887466	

Plan Annotations					
Measured Depth (usft)	Vertical Depth (usft)	Local Coordinates		Comment	
		+N/-S (usft)	+E/-W (usft)		
350.00	350.00	0.00	0.00	Start Build 2.00	
1,106.27	1,097.52	46.78	-87.53	Hold 15.13 Inc, 298.13 Az	
6,759.79	6,555.18	742.19	-1,388.52	KOP 8/100	
8,051.79	7,430.00	846.61	-690.87	LP 90 Inc, 90.45 Az	
12,649.06	7,430.00	810.84	3,906.27	TD at 12649.06	