



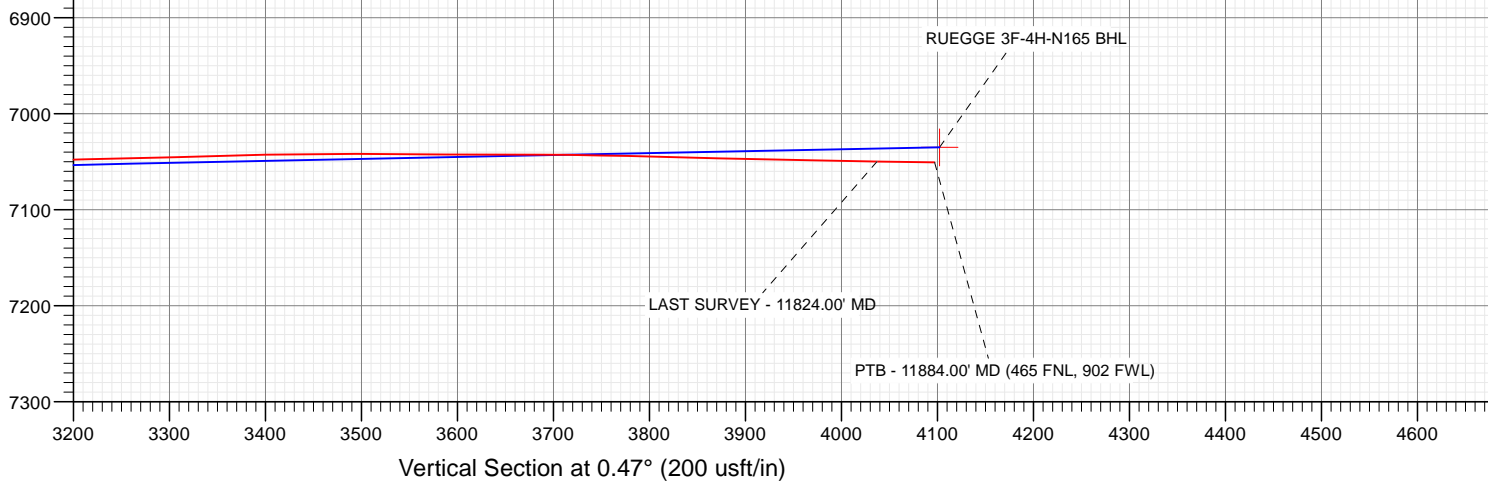
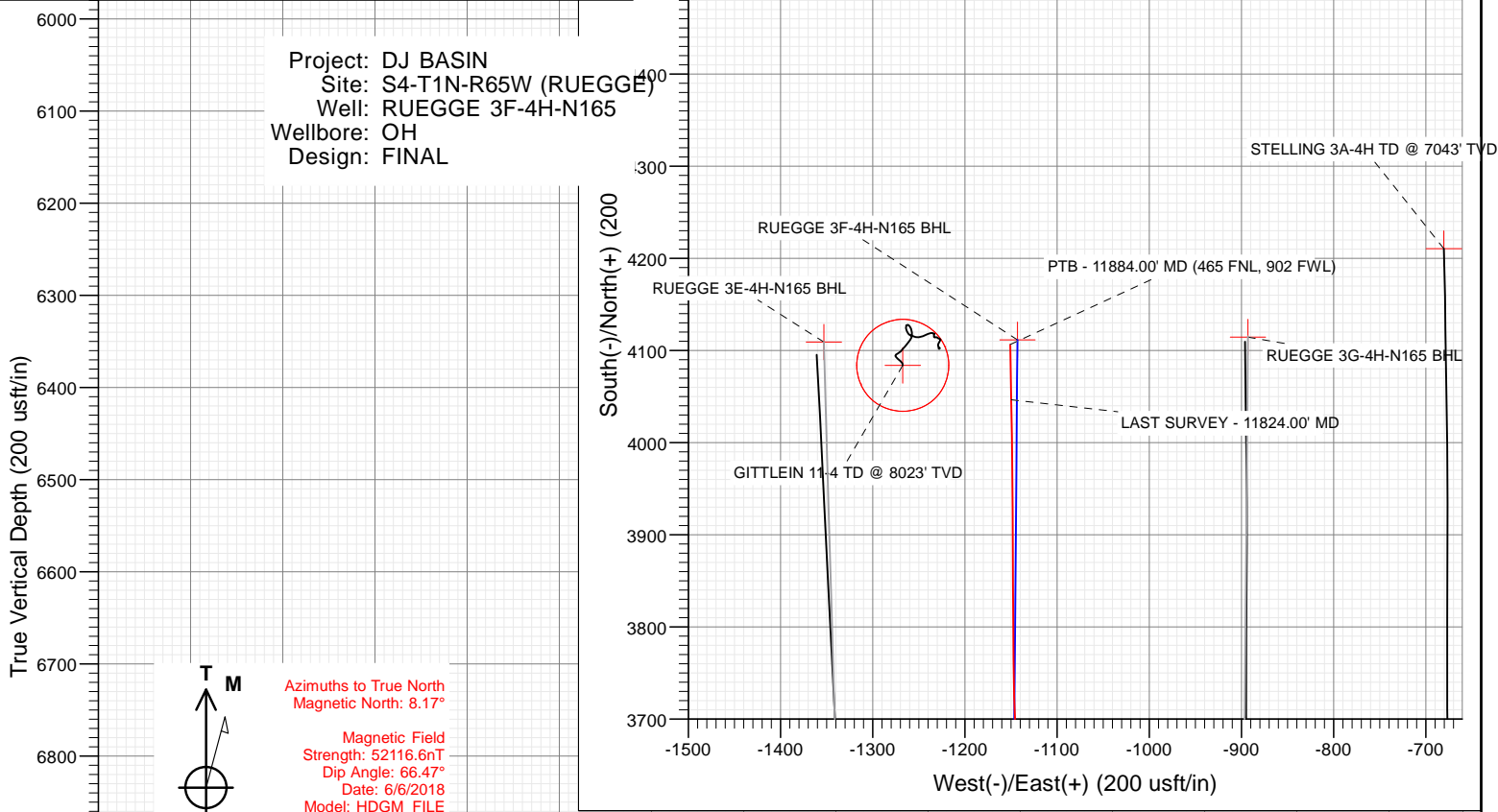
CRESTONE PEAK
RESOURCES

SECTION DETAILS

Sec	MD	Inc	Azi	TVD	+N/-S	+E/-W	Dleg	TFace	VFace	Target
1	0.00	0.00	0.00	0.00	0.00	0.00	0.00	0.00	0.00	
2	800.00	0.00	0.00	800.00	0.00	0.00	0.00	0.00	0.00	
3	1531.94	14.64	230.03	1524.00	-59.74	-71.27	2.00	230.03	-60.32	
4	6437.57	14.64	230.03	6270.38	-856.17	-1021.40	0.00	0.00	-864.52	
5	7680.52	90.00	0.47	7088.00	-148.34	-1178.09	8.00	129.51	-158.00	RUEGGE 3F (-158' VS)
6	8700.51	90.00	0.47	7088.00	871.62	-1169.66	0.00	0.00	862.00	RUEGGE 3F 862' VS
7	8783.42	91.66	0.47	7086.80	954.51	-1168.97	2.00	0.00	944.89	
8	9633.97	91.66	0.47	7062.19	1804.68	-1161.95	0.00	0.00	1795.09	
9	9708.90	90.16	0.47	7061.00	1879.59	-1161.33	2.00	180.00	1870.00	RUEGGE 3F 1870' VS
10	10784.90	90.16	0.47	7058.00	2955.55	-1152.44	0.00	0.00	2946.00	RUEGGE 3F 2946' VS
11	10834.97	91.16	0.47	7057.42	3005.62	-1152.02	2.00	0.00	2996.07	
12	11941.35	91.16	0.47	7035.00	4111.73	-1142.88	0.00	0.00	4102.22	RUEGGE 3F-4H-N165 BHL

FINAL
RUEGGE 3F-4H-N165
358437 185086 361637 185175; LR
23' KB @ 4939.00usft
Ground Level @ 4916.00
North American Datum 1983
Well RUEGGE 3F-4H-N165 - Slot RUEGGE 3F-4H-N165 SHL, True North

Type	Target	No Target (Freehand)	Azimuth	Origin Type	N/S	E/W	From TVD
Name			TVD	+N/-S	+E/-W	Latitude	Longitude
RUEGGE 3F-4H-N165 BHL			7035.00	4111.73	-1142.88	40.086524	-104.675095
RUEGGE 3F 2946' VS			7068.00	2955.55	-1152.44	40.083350	-104.675069
RUEGGE 3F 1870' VS			7061.00	1879.59	-1161.33	40.080397	-104.675101
RUEGGE 3F-4H-N165 TPZ			7079.75	-236.80	-1177.97	40.074867	-104.675180
RUEGGE 3F (-158' VS)			7088.00	-148.34	-1178.09	40.074830	-104.675160
RUEGGE 3F 862' VS			7088.00	871.62	-1169.66	40.077630	-104.675130



WELL DETAILS: RUEGGE 3F-4H-N165

+N/-S	+E/-W	Northing	Easting	Latitude	Longitude
0.00	0.00	1271338.37	3232001.59	40.075237	-104.670950

CATHEDRAL



Cathedral Energy Services

Survey Report

Company:	Crestone Peak Resources	Local Co-ordinate Reference:	Well RUEGGE 3F-4H-N165 - Slot RUEGGE 3F-4
Project:	DJ BASIN	TVD Reference:	23' KB @ 4939.00usft
Site:	S4-T1N-R65W (RUEGGE)	MD Reference:	23' KB @ 4939.00usft
Well:	RUEGGE 3F-4H-N165	North Reference:	True
Wellbore:	OH	Survey Calculation Method:	Minimum Curvature
Design:	FINAL	Database:	USA EDM 5000 Multi Users DB

Project	DJ BASIN		
Map System:	US State Plane 1983	System Datum:	Mean Sea Level
Geo Datum:	North American Datum 1983		
Map Zone:	Colorado Northern Zone		

Site		S4-T1N-R65W (RUEGGE)			
Site Position:		Northing:	1,271,333.68 usft	Latitude:	40.075225
From:	Map	Easting:	3,231,971.96 usft	Longitude:	-104.671056
Position Uncertainty:	0.00 usft	Slot Radius:	13-3/16 "	Grid Convergence:	0.54 °

Well	RUEGGE 3F-4H-N165 - Slot RUEGGE 3F-4H-N165 SHL					
Well Position	+N/-S	0.00 usft	Northing:	1,271,338.37 usft	Latitude:	40.075237
	+E/-W	0.00 usft	Easting:	3,232,001.59 usft	Longitude:	-104.670950
Position Uncertainty		0.00 usft	Wellhead Elevation:	usft	Ground Level:	4,916.00 usft

Wellbore	OH				
Magnetics	Model Name	Sample Date	Declination (°)	Dip Angle (°)	Field Strength (nT)
	HDGM_FILE	6/6/2018	8.17	66.47	52,116.60000000

Design	FINAL				
Audit Notes:					
Version:	1.0	Phase:	ACTUAL	Tie On Depth:	0.00
Vertical Section:	Depth From (TVD) (usft)	+N/-S (usft)	+E/-W (usft)	Direction (°)	
	0.00	0.00	0.00	0.47	

Survey Program	Date	6/21/2018			
From (usft)	To (usft)	Survey (Wellbore)	Tool Name	Description	
113.00	2,454.00	Survey #1 (OH)	VESSI_GYROFLEX	VESSI Gyroflex Gyro	
2,563.00	11,884.00	Survey #2 (OH)	MWD+HDGM	OWSG MWD + HDGM	

Survey									
Measured Depth (usft)	Inclination (°)	Azimuth (°)	Vertical Depth (usft)	+N/-S (usft)	+E/-W (usft)	Vertical Section (usft)	Dogleg Rate (°/100usf)	Build Rate (°/100u)	Formations / Comments
10.00	0.00	0.00	10.00	0.00	0.00	0.00	0.00	0.00	
113.00	0.64	288.51	113.00	0.18	-0.55	0.18	0.62	0.62	
143.00	0.67	300.82	143.00	0.33	-0.86	0.32	0.48	0.10	
174.00	0.54	303.28	173.99	0.50	-1.13	0.49	0.43	-0.42	
265.00	0.24	99.01	264.99	0.70	-1.30	0.69	0.84	-0.33	
356.00	0.40	88.20	355.99	0.68	-0.80	0.68	0.19	0.18	
468.00	0.43	36.58	467.99	1.03	-0.16	1.03	0.32	0.03	
552.00	0.30	63.05	551.99	1.39	0.23	1.39	0.25	-0.15	
635.00	0.40	62.87	634.99	1.62	0.68	1.62	0.12	0.12	
717.00	0.91	68.24	716.98	1.99	1.54	2.00	0.63	0.62	
799.00	0.62	322.19	798.98	2.58	1.87	2.60	1.51	-0.35	
882.00	2.82	265.12	881.94	2.76	-0.44	2.76	3.06	2.65	

Cathedral Energy Services

Survey Report

Company:	Crestone Peak Resources	Local Co-ordinate Reference:	Well RUEGGE 3F-4H-N165 - Slot RUEGGE 3F-4
Project:	DJ BASIN	TVD Reference:	23' KB @ 4939.00usft
Site:	S4-T1N-R65W (RUEGGE)	MD Reference:	23' KB @ 4939.00usft
Well:	RUEGGE 3F-4H-N165	North Reference:	True
Wellbore:	OH	Survey Calculation Method:	Minimum Curvature
Design:	FINAL	Database:	USA EDM 5000 Multi Users DB

Survey									
Measured Depth (usft)	Inclination (°)	Azimuth (°)	Vertical Depth (usft)	+N/-S (usft)	+E/-W (usft)	Vertical Section (usft)	Dogleg Rate (°/100usf)	Build Rate (°/100u)	Formations / Comments
965.00	6.07	244.54	964.68	0.70	-6.44	0.65	4.30	3.92	
1,024.00	7.26	232.05	1,023.28	-2.93	-12.19	-3.03	3.17	2.02	
1,107.00	8.25	221.43	1,105.53	-10.62	-20.27	-10.79	2.09	1.19	
1,190.00	8.74	216.93	1,187.62	-20.13	-28.00	-20.36	0.99	0.59	
1,272.00	10.08	222.30	1,268.51	-30.42	-36.57	-30.72	1.95	1.63	
1,356.00	10.88	227.39	1,351.11	-41.22	-47.36	-41.61	1.46	0.95	
1,439.00	11.25	227.22	1,432.57	-52.02	-59.06	-52.51	0.45	0.45	
1,521.00	11.64	225.21	1,512.94	-63.28	-70.80	-63.86	0.68	0.48	
1,604.00	12.89	230.86	1,594.05	-75.03	-83.93	-75.71	2.09	1.51	
1,688.00	13.37	233.50	1,675.85	-86.72	-99.00	-87.53	0.91	0.57	
1,774.00	14.07	235.45	1,759.40	-98.56	-115.61	-99.51	0.98	0.81	
1,856.00	14.43	237.36	1,838.88	-109.73	-132.42	-110.81	0.72	0.44	
1,937.00	14.65	231.98	1,917.28	-121.48	-148.99	-122.70	1.69	0.27	
2,022.00	14.59	230.35	1,999.53	-134.93	-165.70	-136.29	0.49	-0.07	
2,101.00	14.38	229.43	2,076.02	-147.66	-180.81	-149.14	0.39	-0.27	
2,185.00	13.64	227.93	2,157.52	-161.08	-196.09	-162.68	0.98	-0.88	
2,267.00	14.87	229.65	2,237.00	-174.37	-211.28	-176.10	1.59	1.50	
2,351.00	13.91	231.42	2,318.36	-187.65	-227.39	-189.51	1.26	-1.14	
2,454.00	12.91	231.40	2,418.55	-202.55	-246.06	-204.56	0.97	-0.97	
2,563.00	12.22	228.69	2,524.94	-217.76	-264.24	-219.92	0.83	-0.63	
2,657.00	14.19	234.23	2,616.45	-231.06	-281.07	-233.36	2.49	2.10	
2,751.00	14.68	232.91	2,707.49	-244.98	-299.92	-247.43	0.63	0.52	
2,846.00	15.34	234.05	2,799.25	-259.62	-319.69	-262.23	0.76	0.69	
2,941.00	16.57	229.65	2,890.59	-275.77	-340.19	-278.55	1.81	1.29	
3,035.00	16.13	229.04	2,980.79	-293.00	-360.26	-295.95	0.50	-0.47	
3,130.00	16.26	223.50	3,072.02	-311.30	-379.39	-314.40	1.63	0.14	
3,225.00	14.68	221.48	3,163.58	-329.97	-396.52	-333.21	1.76	-1.66	
3,319.00	14.15	232.56	3,254.64	-345.88	-413.53	-349.26	2.98	-0.56	
3,414.00	15.12	231.32	3,346.55	-360.68	-432.42	-364.22	1.07	1.02	
3,509.00	14.19	231.24	3,438.46	-375.72	-451.18	-379.41	0.98	-0.98	
3,603.00	13.49	230.53	3,529.73	-389.90	-468.62	-393.73	0.77	-0.74	
3,698.00	12.83	244.77	3,622.26	-401.44	-486.72	-405.42	3.47	-0.69	
3,792.00	14.94	239.85	3,713.51	-411.98	-506.65	-416.12	2.57	2.24	
3,887.00	14.85	219.81	3,805.38	-427.49	-525.04	-431.78	5.40	-0.09	
3,982.00	12.79	224.29	3,897.63	-444.37	-540.18	-448.79	2.44	-2.17	
4,076.00	13.80	235.54	3,989.12	-458.17	-556.69	-462.72	2.95	1.07	
4,171.00	17.53	238.09	4,080.58	-472.15	-578.19	-476.87	3.99	3.93	
4,265.00	22.02	229.13	4,169.03	-491.17	-603.55	-496.11	5.75	4.78	
4,371.00	16.83	220.25	4,268.99	-515.91	-628.51	-521.05	5.62	-4.90	
4,465.00	13.54	219.55	4,359.69	-534.79	-644.32	-540.05	3.51	-3.50	
4,561.00	12.88	230.97	4,453.17	-550.19	-659.79	-555.59	2.80	-0.69	
4,655.00	14.72	239.32	4,544.46	-562.89	-678.20	-568.43	2.88	1.96	
4,750.00	15.07	228.25	4,636.29	-577.27	-697.80	-582.98	3.01	0.37	
4,845.00	17.14	230.71	4,727.56	-594.36	-717.85	-600.23	2.29	2.18	
4,939.00	16.39	229.04	4,817.56	-611.83	-738.59	-617.86	0.95	-0.80	
5,034.00	13.62	224.82	4,909.31	-628.55	-756.60	-634.74	3.13	-2.92	
5,129.00	13.36	232.99	5,001.70	-643.09	-773.25	-649.41	2.02	-0.27	
5,223.00	12.35	225.61	5,093.35	-656.66	-789.10	-663.11	2.05	-1.07	
5,318.00	10.81	224.82	5,186.41	-670.09	-802.64	-676.65	1.63	-1.62	
5,412.00	12.48	225.96	5,278.48	-683.41	-816.16	-690.08	1.79	1.78	
5,507.00	14.46	234.05	5,370.87	-697.51	-833.14	-704.32	2.87	2.08	
5,601.00	16.61	231.06	5,461.43	-712.84	-853.10	-719.82	2.44	2.29	
5,695.00	15.60	232.99	5,551.74	-728.90	-873.64	-736.04	1.22	-1.07	

Cathedral Energy Services

Survey Report

Company:	Crestone Peak Resources	Local Co-ordinate Reference:	Well RUEGGE 3F-4H-N165 - Slot RUEGGE 3F-4
Project:	DJ BASIN	TVD Reference:	23' KB @ 4939.00usft
Site:	S4-T1N-R65W (RUEGGE)	MD Reference:	23' KB @ 4939.00usft
Well:	RUEGGE 3F-4H-N165	North Reference:	True
Wellbore:	OH	Survey Calculation Method:	Minimum Curvature
Design:	FINAL	Database:	USA EDM 5000 Multi Users DB

Survey									
Measured Depth (usft)	Inclination (°)	Azimuth (°)	Vertical Depth (usft)	+N/-S (usft)	+E/-W (usft)	Vertical Section (usft)	Dogleg Rate (°/100usf)	Build Rate (°/100u)	Formations / Comments
5,790.00	13.01	239.76	5,643.79	-741.97	-893.08	-749.27	3.24	-2.73	
5,885.00	13.67	237.92	5,736.23	-753.32	-911.83	-760.78	0.83	0.69	
5,980.00	13.84	222.36	5,828.54	-767.68	-929.01	-775.28	3.89	0.18	
6,074.00	14.46	219.90	5,919.68	-785.00	-944.11	-792.71	0.92	0.66	
6,169.00	14.55	222.01	6,011.66	-802.96	-959.70	-810.81	0.56	0.09	
6,263.00	14.55	233.70	6,102.66	-818.73	-977.13	-826.72	3.12	0.00	
6,358.00	14.90	238.97	6,194.55	-832.09	-997.21	-840.24	1.46	0.37	
6,452.00	14.68	256.11	6,285.48	-841.18	-1,019.14	-849.52	4.64	-0.23	
6,547.00	18.46	287.57	6,376.69	-839.53	-1,045.22	-848.07	10.09	3.98	
6,642.00	23.20	312.89	6,465.64	-822.21	-1,073.35	-830.99	10.60	4.99	
6,737.00	26.46	331.78	6,551.98	-790.77	-1,097.11	-799.74	8.98	3.43	
6,831.00	30.63	341.10	6,634.58	-749.62	-1,114.78	-758.74	6.48	4.44	
6,926.00	32.92	341.54	6,715.33	-702.23	-1,130.80	-711.48	2.42	2.41	
7,021.00	32.96	347.60	6,795.08	-652.49	-1,144.53	-661.86	3.47	0.04	
7,115.00	39.33	344.88	6,870.96	-598.70	-1,157.80	-608.18	6.99	6.78	
7,209.00	51.37	344.70	6,936.90	-534.29	-1,175.32	-543.92	12.81	12.81	
7,304.00	62.01	352.26	6,989.05	-456.64	-1,190.82	-466.39	13.01	11.20	
7,399.00	70.40	353.93	7,027.34	-370.42	-1,201.22	-380.26	8.98	8.83	
7,494.00	79.06	356.22	7,052.34	-279.20	-1,209.05	-289.11	9.41	9.12	
7,537.01	82.69	358.27	7,059.16	-236.80	-1,211.08	-246.72	9.67	8.45	TPZ - 7537.01 (459 FSL, 877 FWL)
7,589.00	87.10	0.70	7,063.78	-185.03	-1,211.55	-194.96	9.67	8.47	
7,683.00	86.97	1.05	7,068.65	-91.17	-1,210.11	-101.09	0.40	-0.14	
7,778.00	86.00	0.70	7,074.47	3.64	-1,208.67	-6.27	1.09	-1.02	
7,873.00	88.73	1.14	7,078.84	98.52	-1,207.14	88.61	2.91	2.87	
7,967.00	88.24	1.93	7,081.32	192.45	-1,204.62	182.56	0.99	-0.52	
8,062.00	87.54	1.58	7,084.82	287.34	-1,201.72	277.48	0.82	-0.74	
8,157.00	86.57	1.49	7,089.70	382.18	-1,199.18	372.33	1.03	-1.02	
8,251.00	89.96	1.14	7,092.55	476.10	-1,197.02	466.27	3.63	3.61	
8,346.00	89.08	0.88	7,093.34	571.08	-1,195.35	561.26	0.97	-0.93	
8,441.00	92.20	1.23	7,092.28	666.05	-1,193.60	656.23	3.30	3.28	
8,536.00	92.11	1.75	7,088.71	760.95	-1,191.13	751.15	0.56	-0.09	
8,631.00	91.58	1.32	7,085.65	855.86	-1,188.58	846.09	0.72	-0.56	
8,725.00	91.19	1.23	7,083.38	949.81	-1,186.49	940.05	0.43	-0.41	
8,820.00	90.88	0.88	7,081.66	1,044.78	-1,184.74	1,035.03	0.49	-0.33	
8,914.00	90.22	0.44	7,080.76	1,138.77	-1,183.66	1,129.02	0.84	-0.70	
9,010.00	92.37	359.82	7,078.59	1,234.74	-1,183.44	1,224.99	2.33	2.24	
9,105.00	92.55	358.24	7,074.51	1,329.63	-1,185.05	1,319.87	1.67	0.19	
9,199.00	93.30	0.52	7,069.72	1,423.50	-1,186.07	1,413.72	2.55	0.80	
9,294.00	91.49	1.23	7,065.75	1,518.40	-1,184.62	1,508.63	2.05	-1.91	
9,388.00	92.33	0.88	7,062.61	1,612.33	-1,182.89	1,602.57	0.97	0.89	
9,483.00	89.82	1.58	7,060.83	1,707.29	-1,180.85	1,697.54	2.74	-2.64	
9,578.00	90.00	1.40	7,060.98	1,802.25	-1,178.38	1,792.53	0.27	0.19	
9,672.00	90.57	0.52	7,060.51	1,896.24	-1,176.80	1,886.52	1.12	0.61	
9,768.00	91.14	0.52	7,059.08	1,992.22	-1,175.93	1,982.51	0.59	0.59	
9,862.00	88.81	0.79	7,059.12	2,086.21	-1,174.86	2,076.50	2.50	-2.48	
9,957.00	88.64	0.26	7,061.24	2,181.18	-1,173.99	2,171.48	0.59	-0.18	
10,051.00	88.20	359.91	7,063.83	2,275.15	-1,173.85	2,265.44	0.60	-0.47	
10,146.00	90.31	1.75	7,065.06	2,370.12	-1,172.47	2,360.42	2.95	2.22	
10,241.00	89.43	0.96	7,065.28	2,465.09	-1,170.23	2,455.41	1.24	-0.93	
10,336.00	91.19	4.13	7,064.76	2,559.98	-1,166.01	2,550.33	3.82	1.85	
10,430.00	91.14	3.69	7,062.85	2,653.74	-1,159.60	2,644.14	0.47	-0.05	
10,525.00	91.10	2.98	7,061.00	2,748.56	-1,154.07	2,739.00	0.75	-0.04	
10,619.00	91.41	2.72	7,058.94	2,842.42	-1,149.40	2,832.90	0.43	0.33	

Cathedral Energy Services

Survey Report

Company:	Crestone Peak Resources	Local Co-ordinate Reference:	Well RUEGGE 3F-4H-N165 - Slot RUEGGE 3F-4
Project:	DJ BASIN	TVD Reference:	23' KB @ 4939.00usft
Site:	S4-T1N-R65W (RUEGGE)	MD Reference:	23' KB @ 4939.00usft
Well:	RUEGGE 3F-4H-N165	North Reference:	True
Wellbore:	OH	Survey Calculation Method:	Minimum Curvature
Design:	FINAL	Database:	USA EDM 5000 Multi Users DB

Survey									
Measured Depth (usft)	Inclination (°)	Azimuth (°)	Vertical Depth (usft)	+N/-S (usft)	+E/-W (usft)	Vertical Section (usft)	Dogleg Rate (°/100usf)	Build Rate (°/100u)	Formations / Comments
10,714.00	91.27	2.28	7,056.72	2,937.31	-1,145.26	2,927.81	0.49	-0.15	
10,809.00	91.98	1.58	7,054.02	3,032.21	-1,142.06	3,022.74	1.05	0.75	
10,904.00	92.55	1.05	7,050.27	3,127.11	-1,139.88	3,117.66	0.82	0.60	
10,998.00	90.84	1.05	7,047.49	3,221.05	-1,138.16	3,211.61	1.82	-1.82	
11,092.00	91.71	0.52	7,045.39	3,315.02	-1,136.87	3,305.58	1.08	0.93	
11,187.00	91.49	359.29	7,042.74	3,409.98	-1,137.03	3,400.54	1.31	-0.23	
11,281.00	89.60	358.50	7,041.85	3,503.95	-1,138.84	3,494.49	2.18	-2.01	
11,376.00	89.69	358.15	7,042.44	3,598.91	-1,141.62	3,589.42	0.38	0.09	
11,471.00	89.91	357.45	7,042.77	3,693.84	-1,145.27	3,684.32	0.77	0.23	
11,565.00	88.42	359.91	7,044.14	3,787.79	-1,147.43	3,778.25	3.06	-1.59	
11,659.00	88.73	359.82	7,046.48	3,881.76	-1,147.65	3,872.22	0.34	0.33	
11,755.00	88.77	359.03	7,048.57	3,977.74	-1,148.62	3,968.18	0.82	0.04	
11,824.00	89.12	359.03	7,049.84	4,046.71	-1,149.78	4,037.15	0.51	0.51	LAST SURVEY - 11824.00' MD
11,884.00	89.12	359.03	7,050.76	4,106.70	-1,150.80	4,097.12	0.00	0.00	PTB - 11884.00' MD (465 FNL, 902 FWL)

Targets									
Target Name	Dip Angle (°)	Dip Dir. (°)	TVD (usft)	+N/-S (usft)	+E/-W (usft)	Northing (usft)	Easting (usft)	Latitude	Longitude
RUEGGE 3F-4H-N165 E - hit/miss target - Shape	0.00	0.00	7,035.00	4,111.73	-1,142.88	1,275,439.23	3,230,820.32	40.086524	-104.675035
- actual wellpath misses target center by 18.34usft at 11884.00usft MD (7050.76 TVD, 4106.70 N, -1150.80 E)									
- Point									
RUEGGE 3F 1870' VS - actual wellpath misses target center by 15.65usft at 9655.61usft MD (7060.66 TVD, 1879.85 N, -1176.97 E)	0.00	0.00	7,061.00	1,879.59	-1,161.33	1,273,207.02	3,230,822.74	40.080397	-104.675101
- Point									
RUEGGE 3F-4H-N165 1 - actual wellpath misses target center by 38.96usft at 7538.54usft MD (7059.35 TVD, -235.28 N, -1211.13 E)	0.00	0.00	7,079.75	-236.80	-1,177.97	1,271,090.57	3,230,825.88	40.074587	-104.675160
- Point									
RUEGGE 3F 2946' VS - actual wellpath misses target center by 8.06usft at 10731.95usft MD (7056.30 TVD, 2955.24 N, -1144.57 E)	0.00	0.00	7,058.00	2,955.55	-1,152.44	1,274,283.01	3,230,821.58	40.083350	-104.675069
- Point									
RUEGGE 3F 862' VS - actual wellpath misses target center by 18.77usft at 8647.11usft MD (7085.22 TVD, 871.97 N, -1188.22 E)	0.00	0.00	7,088.00	871.62	-1,169.66	1,272,199.01	3,230,823.84	40.077630	-104.675130
- Point									
RUEGGE 3F (-158' VS) - actual wellpath misses target center by 39.79usft at 7627.40usft MD (7065.74 TVD, -146.68 N, -1211.03 E)	0.00	0.00	7,088.00	-148.34	-1,178.09	1,271,179.02	3,230,824.94	40.074830	-104.675160
- Point									

Design Annotations				
Measured Depth (usft)	Vertical Depth (usft)	Local Coordinates		Comment
		+N/-S (usft)	+E/-W (usft)	
7,537.01	7,059.16	-236.80	-1,211.08	TPZ - 7537.01 (459 FSL, 877 FWL)
11,824.00	7,049.84	4,046.71	-1,149.78	LAST SURVEY - 11824.00' MD
11,884.00	7,050.76	4,106.70	-1,150.80	PTB - 11884.00' MD (465 FNL, 902 FWL)

Checked By: _____ Approved By: _____ Date: _____