



# Crestone Peak Resources

<b>Well Name:</b> <b>SHELEY 3C-4H-M267</b>	<b>Project Name:</b> <b>Sec 4 T2N-R67W</b>	<b>Pad Name:</b> <b>Sheley Pad</b>
---	---	---------------------------------------

### ANNOTATIONS

MD	Inc	Azi	TVD	+N/-S	+E/-W	VSect	Departure	Annotation
200.00	0.00	0.00	200.00	0.00	0.00	0.00	0.00	Start Build 2.00
1136.64	18.73	315.56	1120.04	108.35	-106.25	-72.61	151.76	Hold 18.73 Inc, 315.56 Az
6872.11	18.73	315.56	6551.69	1423.48	-1395.94	-953.88	1993.73	KOP 8/100
8180.20	90.00	97.50	7430.00	1515.08	-684.98	-244.95	2793.23	LP 90 Inc, 97.5 Az
10180.20	90.00	97.50	7430.00	1254.03	1297.91	1591.16	4793.23	Start Turn -2.00
10380.20	90.00	93.50	7430.00	1234.87	1496.95	1777.39	4993.23	Hold 93.5 Az
12730.09	90.00	93.50	7430.00	1091.41	3842.46	3994.45	7343.12	TD at 12730.09

### Geodetic Datum:

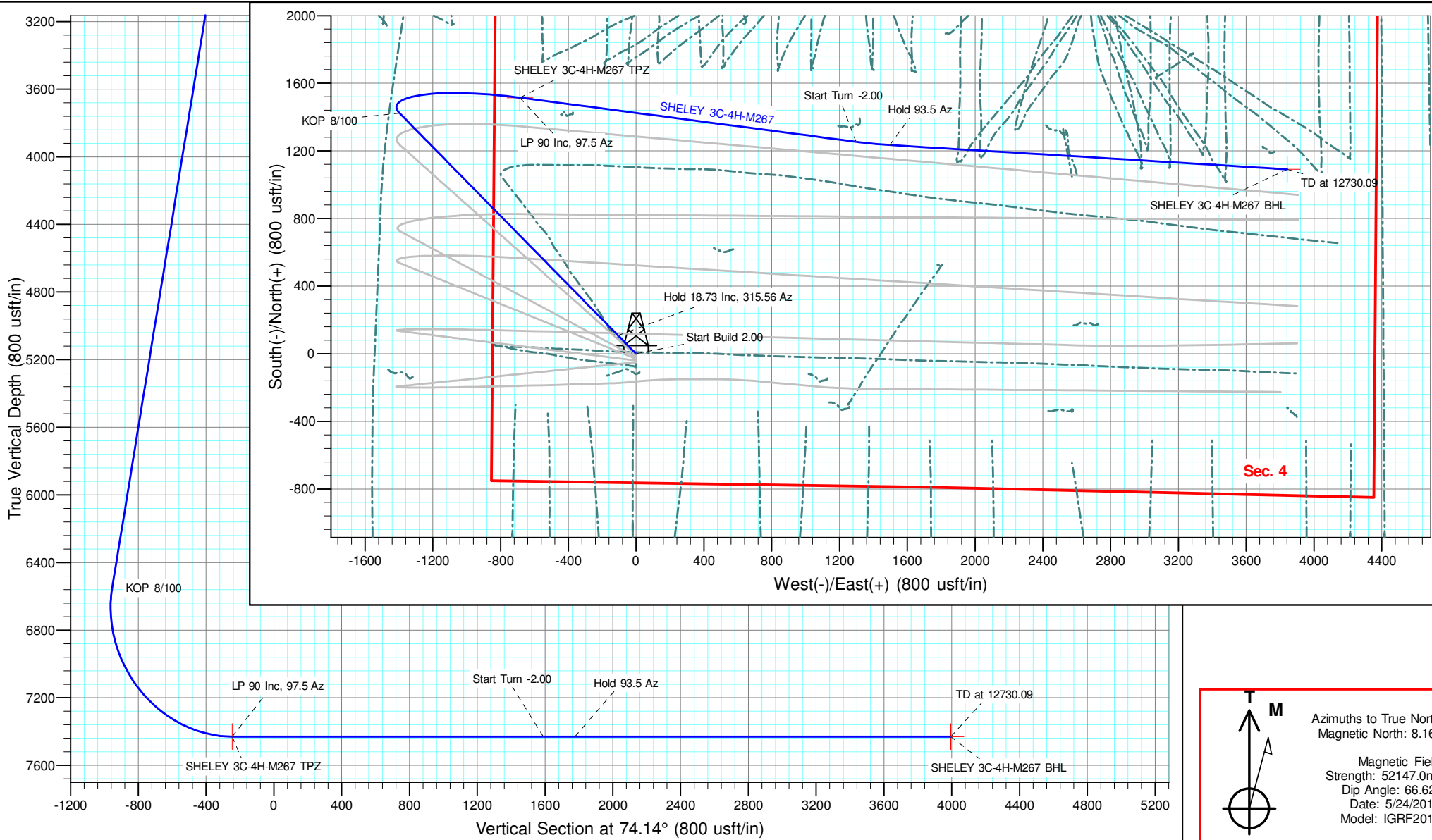
North American Datum 1983  
US State Plane 1983, Colorado Northern Zone

### Elevation:

Ground Elevation: 4909.00  
KB Elevation: RKB @ 4932.00usft

### DESIGN TARGET DETAILS

Name	TVD	+N/-S	+E/-W	Northing	Easting	Latitude	Longitude	Shape
SHELEY 3C-4H-M267 BHL	7430.00	1091.40	3842.46	1303626.89	3171122.71	40.165229	-104.887694	Point
SHELEY 3C-4H-M267 TPZ	7430.00	1515.08	-684.98	1304020.00	3166592.52	40.166393	-104.903894	Point



Azimuths to True North  
 Magnetic North: 8.16°  
 Magnetic Field Strength: 52147.0nT  
 Dip Angle: 66.62°  
 Date: 5/24/2018  
 Model: IGRF2015



# **Crestone Peak Resources**

**Sec 4 T2N-R67W**

**Sheley Pad**

**SHELEY 3C-4H-M267**

**Wellbore #1**

**Plan: Plan #3 25Jun18 kjs**

## **Standard Planning Report - Geographic**

**29 June, 2018**

<b>Database:</b>	EDM 5000.15 Single User Db	<b>Local Co-ordinate Reference:</b>	Well SHELEY 3C-4H-M267
<b>Company:</b>	Crestone Peak Resources	<b>TVD Reference:</b>	RKB @ 4932.00usft
<b>Project:</b>	Sec 4 T2N-R67W	<b>MD Reference:</b>	RKB @ 4932.00usft
<b>Site:</b>	Sheley Pad	<b>North Reference:</b>	True
<b>Well:</b>	SHELEY 3C-4H-M267	<b>Survey Calculation Method:</b>	Minimum Curvature
<b>Wellbore:</b>	Wellbore #1		
<b>Design:</b>	Plan #3 25Jun18 kjs		

<b>Project</b>	Sec 4 T2N-R67W, Weld County, CO		
<b>Map System:</b>	US State Plane 1983	<b>System Datum:</b>	Mean Sea Level
<b>Geo Datum:</b>	North American Datum 1983		
<b>Map Zone:</b>	Colorado Northern Zone		

<b>Site</b>	Sheley Pad				
<b>Site Position:</b>		<b>Northing:</b>	1,302,549.65 usft	<b>Latitude:</b>	40.162344
<b>From:</b>	Lat/Long	<b>Easting:</b>	3,167,287.72 usft	<b>Longitude:</b>	-104.901442
<b>Position Uncertainty:</b>	0.00 usft	<b>Slot Radius:</b>	13-3/16 "	<b>Grid Convergence:</b>	0.39 °

<b>Well</b>	SHELEY 3C-4H-M267					
<b>Well Position</b>	<b>+N/-S</b>	0.00 usft	<b>Northing:</b>	1,302,509.57 usft	<b>Latitude:</b>	40.162234
	<b>+E/-W</b>	0.00 usft	<b>Easting:</b>	3,167,287.71 usft	<b>Longitude:</b>	-104.901443
<b>Position Uncertainty</b>		0.00 usft	<b>Wellhead Elevation:</b>		<b>Ground Level:</b>	4,909.00 usft

<b>Wellbore</b>	Wellbore #1				
<b>Magnetics</b>	<b>Model Name</b>	<b>Sample Date</b>	<b>Declination (°)</b>	<b>Dip Angle (°)</b>	<b>Field Strength (nT)</b>
	IGRF2015	5/24/2018	8.16	66.62	52,146.98614506

<b>Design</b>	Plan #3 25Jun18 kjs			
<b>Audit Notes:</b>				
<b>Version:</b>	<b>Phase:</b>	PLAN	<b>Tie On Depth:</b>	0.00
<b>Vertical Section:</b>	<b>Depth From (TVD) (usft)</b>	<b>+N/-S (usft)</b>	<b>+E/-W (usft)</b>	<b>Direction (°)</b>
	0.00	0.00	0.00	74.14

<b>Plan Survey Tool Program</b>	<b>Date</b>	6/29/2018		
<b>Depth From (usft)</b>	<b>Depth To (usft)</b>	<b>Survey (Wellbore)</b>	<b>Tool Name</b>	<b>Remarks</b>
1	0.00	12,730.09 Plan #3 25Jun18 kjs (Wellbore #	MWD	
			OWSG MWD - Standard	

<b>Plan Sections</b>										
Measured Depth (usft)	Inclination (°)	Azimuth (°)	Vertical Depth (usft)	+N/-S (usft)	+E/-W (usft)	Dogleg Rate (°/100usft)	Build Rate (°/100usft)	Turn Rate (°/100usft)	TFO (°)	Target
0.00	0.00	0.00	0.00	0.00	0.00	0.00	0.00	0.00	0.00	
200.00	0.00	0.00	200.00	0.00	0.00	0.00	0.00	0.00	0.00	
1,136.64	18.73	315.56	1,120.04	108.35	-106.25	2.00	2.00	0.00	315.56	
6,872.11	18.73	315.56	6,551.69	1,423.48	-1,395.94	0.00	0.00	0.00	0.00	
8,180.20	90.00	97.50	7,430.00	1,515.08	-684.98	8.00	5.45	10.85	140.42	SHELEY 3C-4H-M267
10,180.20	90.00	97.50	7,430.00	1,254.03	1,297.91	0.00	0.00	0.00	0.00	
10,380.20	90.00	93.50	7,430.00	1,234.87	1,496.95	2.00	0.00	-2.00	-90.00	
12,730.09	90.00	93.50	7,430.00	1,091.41	3,842.46	0.00	0.00	0.00	0.00	SHELEY 3C-4H-M267

<b>Database:</b>	EDM 5000.15 Single User Db	<b>Local Co-ordinate Reference:</b>	Well SHELEY 3C-4H-M267
<b>Company:</b>	Crestone Peak Resources	<b>TVD Reference:</b>	RKB @ 4932.00usft
<b>Project:</b>	Sec 4 T2N-R67W	<b>MD Reference:</b>	RKB @ 4932.00usft
<b>Site:</b>	Sheley Pad	<b>North Reference:</b>	True
<b>Well:</b>	SHELEY 3C-4H-M267	<b>Survey Calculation Method:</b>	Minimum Curvature
<b>Wellbore:</b>	Wellbore #1		
<b>Design:</b>	Plan #3 25Jun18 kjs		

Planned Survey										
Measured Depth (usft)	Inclination (°)	Azimuth (°)	Vertical Depth (usft)	+N/-S (usft)	+E/-W (usft)	Map Northing (usft)	Map Easting (usft)	Latitude	Longitude	
0.00	0.00	0.00	0.00	0.00	0.00	1,302,509.57	3,167,287.71	40.162234	-104.901443	
100.00	0.00	0.00	100.00	0.00	0.00	1,302,509.57	3,167,287.71	40.162234	-104.901443	
200.00	0.00	0.00	200.00	0.00	0.00	1,302,509.57	3,167,287.71	40.162234	-104.901443	
<b>Start Build 2.00</b>										
300.00	2.00	315.56	299.98	1.25	-1.22	1,302,510.81	3,167,286.48	40.162237	-104.901448	
400.00	4.00	315.56	399.84	4.98	-4.89	1,302,514.52	3,167,282.79	40.162248	-104.901461	
500.00	6.00	315.56	499.45	11.20	-10.99	1,302,520.70	3,167,276.65	40.162265	-104.901483	
600.00	8.00	315.56	598.70	19.91	-19.52	1,302,529.34	3,167,268.06	40.162289	-104.901513	
700.00	10.00	315.56	697.47	31.07	-30.47	1,302,540.44	3,167,257.03	40.162319	-104.901552	
800.00	12.00	315.56	795.62	44.70	-43.83	1,302,553.97	3,167,243.58	40.162357	-104.901600	
900.00	14.00	315.56	893.06	60.76	-59.58	1,302,569.92	3,167,227.72	40.162401	-104.901656	
1,000.00	16.00	315.56	989.64	79.24	-77.70	1,302,588.28	3,167,209.47	40.162452	-104.901721	
1,100.00	18.00	315.56	1,085.27	100.11	-98.17	1,302,609.01	3,167,188.86	40.162509	-104.901795	
1,136.64	18.73	315.56	1,120.04	108.35	-106.25	1,302,617.20	3,167,180.73	40.162531	-104.901823	
<b>Hold 18.73 Inc, 315.56 Az</b>										
1,200.00	18.73	315.56	1,180.05	122.88	-120.50	1,302,631.63	3,167,166.38	40.162571	-104.901874	
1,300.00	18.73	315.56	1,274.75	145.81	-142.99	1,302,654.41	3,167,143.74	40.162634	-104.901955	
1,400.00	18.73	315.56	1,369.45	168.74	-165.48	1,302,677.19	3,167,121.10	40.162697	-104.902035	
1,500.00	18.73	315.56	1,464.15	191.67	-187.96	1,302,699.97	3,167,098.46	40.162760	-104.902116	
1,600.00	18.73	315.56	1,558.86	214.60	-210.45	1,302,722.74	3,167,075.82	40.162823	-104.902196	
1,700.00	18.73	315.56	1,653.56	237.53	-232.93	1,302,745.52	3,167,053.18	40.162886	-104.902277	
1,800.00	18.73	315.56	1,748.26	260.46	-255.42	1,302,768.30	3,167,030.54	40.162949	-104.902357	
1,900.00	18.73	315.56	1,842.96	283.39	-277.91	1,302,791.08	3,167,007.90	40.163012	-104.902438	
2,000.00	18.73	315.56	1,937.67	306.32	-300.39	1,302,813.85	3,166,985.26	40.163075	-104.902518	
2,100.00	18.73	315.56	2,032.37	329.25	-322.88	1,302,836.63	3,166,962.62	40.163138	-104.902599	
2,200.00	18.73	315.56	2,127.07	352.18	-345.36	1,302,859.41	3,166,939.98	40.163201	-104.902679	
2,300.00	18.73	315.56	2,221.78	375.11	-367.85	1,302,882.18	3,166,917.34	40.163264	-104.902759	
2,400.00	18.73	315.56	2,316.48	398.04	-390.34	1,302,904.96	3,166,894.70	40.163327	-104.902840	
2,500.00	18.73	315.56	2,411.18	420.97	-412.82	1,302,927.74	3,166,872.06	40.163390	-104.902920	
2,600.00	18.73	315.56	2,505.88	443.90	-435.31	1,302,950.52	3,166,849.42	40.163453	-104.903001	
2,700.00	18.73	315.56	2,600.59	466.83	-457.79	1,302,973.29	3,166,826.77	40.163516	-104.903081	
2,800.00	18.73	315.56	2,695.29	489.76	-480.28	1,302,996.07	3,166,804.13	40.163578	-104.903162	
2,900.00	18.73	315.56	2,789.99	512.69	-502.77	1,303,018.85	3,166,781.49	40.163641	-104.903242	
3,000.00	18.73	315.56	2,884.69	535.62	-525.25	1,303,041.63	3,166,758.85	40.163704	-104.903323	
3,100.00	18.73	315.56	2,979.40	558.54	-547.74	1,303,064.40	3,166,736.21	40.163767	-104.903403	
3,200.00	18.73	315.56	3,074.10	581.47	-570.23	1,303,087.18	3,166,713.57	40.163830	-104.903484	
3,300.00	18.73	315.56	3,168.80	604.40	-592.71	1,303,109.96	3,166,690.93	40.163893	-104.903564	
3,400.00	18.73	315.56	3,263.51	627.33	-615.20	1,303,132.74	3,166,668.29	40.163956	-104.903644	
3,500.00	18.73	315.56	3,358.21	650.26	-637.68	1,303,155.51	3,166,645.65	40.164019	-104.903725	
3,600.00	18.73	315.56	3,452.91	673.19	-660.17	1,303,178.29	3,166,623.01	40.164082	-104.903805	
3,700.00	18.73	315.56	3,547.61	696.12	-682.66	1,303,201.07	3,166,600.37	40.164145	-104.903886	
3,800.00	18.73	315.56	3,642.32	719.05	-705.14	1,303,223.85	3,166,577.73	40.164208	-104.903966	
3,900.00	18.73	315.56	3,737.02	741.98	-727.63	1,303,246.62	3,166,555.09	40.164271	-104.904047	
4,000.00	18.73	315.56	3,831.72	764.91	-750.11	1,303,269.40	3,166,532.45	40.164334	-104.904127	
4,100.00	18.73	315.56	3,926.42	787.84	-772.60	1,303,292.18	3,166,509.81	40.164397	-104.904208	
4,200.00	18.73	315.56	4,021.13	810.77	-795.09	1,303,314.96	3,166,487.17	40.164460	-104.904288	
4,300.00	18.73	315.56	4,115.83	833.70	-817.57	1,303,337.73	3,166,464.53	40.164523	-104.904369	
4,400.00	18.73	315.56	4,210.53	856.63	-840.06	1,303,360.51	3,166,441.89	40.164586	-104.904449	
4,500.00	18.73	315.56	4,305.23	879.56	-862.54	1,303,383.29	3,166,419.25	40.164649	-104.904530	
4,600.00	18.73	315.56	4,399.94	902.49	-885.03	1,303,406.07	3,166,396.61	40.164711	-104.904610	
4,700.00	18.73	315.56	4,494.64	925.42	-907.52	1,303,428.84	3,166,373.97	40.164774	-104.904690	
4,800.00	18.73	315.56	4,589.34	948.35	-930.00	1,303,451.62	3,166,351.33	40.164837	-104.904771	
4,900.00	18.73	315.56	4,684.05	971.28	-952.49	1,303,474.40	3,166,328.69	40.164900	-104.904851	
5,000.00	18.73	315.56	4,778.75	994.21	-974.98	1,303,497.17	3,166,306.05	40.164963	-104.904932	

<b>Database:</b>	EDM 5000.15 Single User Db	<b>Local Co-ordinate Reference:</b>	Well SHELEY 3C-4H-M267
<b>Company:</b>	Crestone Peak Resources	<b>TVD Reference:</b>	RKB @ 4932.00usft
<b>Project:</b>	Sec 4 T2N-R67W	<b>MD Reference:</b>	RKB @ 4932.00usft
<b>Site:</b>	Sheley Pad	<b>North Reference:</b>	True
<b>Well:</b>	SHELEY 3C-4H-M267	<b>Survey Calculation Method:</b>	Minimum Curvature
<b>Wellbore:</b>	Wellbore #1		
<b>Design:</b>	Plan #3 25Jun18 kjs		

Planned Survey										
Measured Depth (usft)	Inclination (°)	Azimuth (°)	Vertical Depth (usft)	+N/-S (usft)	+E/-W (usft)	Map Northing (usft)	Map Easting (usft)	Latitude	Longitude	
5,100.00	18.73	315.56	4,873.45	1,017.14	-997.46	1,303,519.95	3,166,283.41	40.165026	-104.905012	
5,200.00	18.73	315.56	4,968.15	1,040.07	-1,019.95	1,303,542.73	3,166,260.77	40.165089	-104.905093	
5,300.00	18.73	315.56	5,062.86	1,063.00	-1,042.43	1,303,565.51	3,166,238.12	40.165152	-104.905173	
5,400.00	18.73	315.56	5,157.56	1,085.93	-1,064.92	1,303,588.28	3,166,215.48	40.165215	-104.905254	
5,500.00	18.73	315.56	5,252.26	1,108.86	-1,087.41	1,303,611.06	3,166,192.84	40.165278	-104.905334	
5,600.00	18.73	315.56	5,346.96	1,131.79	-1,109.89	1,303,633.84	3,166,170.20	40.165341	-104.905415	
5,700.00	18.73	315.56	5,441.67	1,154.72	-1,132.38	1,303,656.62	3,166,147.56	40.165404	-104.905495	
5,800.00	18.73	315.56	5,536.37	1,177.65	-1,154.86	1,303,679.39	3,166,124.92	40.165467	-104.905576	
5,900.00	18.73	315.56	5,631.07	1,200.58	-1,177.35	1,303,702.17	3,166,102.28	40.165530	-104.905656	
6,000.00	18.73	315.56	5,725.78	1,223.51	-1,199.84	1,303,724.95	3,166,079.64	40.165593	-104.905736	
6,100.00	18.73	315.56	5,820.48	1,246.44	-1,222.32	1,303,747.73	3,166,057.00	40.165656	-104.905817	
6,200.00	18.73	315.56	5,915.18	1,269.37	-1,244.81	1,303,770.50	3,166,034.36	40.165719	-104.905897	
6,300.00	18.73	315.56	6,009.88	1,292.30	-1,267.29	1,303,793.28	3,166,011.72	40.165781	-104.905978	
6,400.00	18.73	315.56	6,104.59	1,315.23	-1,289.78	1,303,816.06	3,165,989.08	40.165844	-104.906058	
6,500.00	18.73	315.56	6,199.29	1,338.16	-1,312.27	1,303,838.84	3,165,966.44	40.165907	-104.906139	
6,600.00	18.73	315.56	6,293.99	1,361.08	-1,334.75	1,303,861.61	3,165,943.80	40.165970	-104.906219	
6,700.00	18.73	315.56	6,388.69	1,384.01	-1,357.24	1,303,884.39	3,165,921.16	40.166033	-104.906300	
6,800.00	18.73	315.56	6,483.40	1,406.94	-1,379.73	1,303,907.17	3,165,898.52	40.166096	-104.906380	
6,872.11	18.73	315.56	6,551.69	1,423.48	-1,395.94	1,303,923.59	3,165,882.19	40.166142	-104.906438	
<b>KOP 8/100</b>										
6,900.00	17.07	320.41	6,578.23	1,429.83	-1,401.69	1,303,929.91	3,165,876.41	40.166159	-104.906459	
7,000.00	12.60	346.82	6,674.98	1,451.79	-1,413.54	1,303,951.79	3,165,864.40	40.166219	-104.906501	
7,100.00	12.33	24.52	6,772.78	1,472.16	-1,411.60	1,303,972.17	3,165,866.21	40.166275	-104.906494	
7,200.00	16.48	52.55	6,869.73	1,490.53	-1,395.88	1,303,990.65	3,165,881.81	40.166326	-104.906438	
7,300.00	22.75	67.59	6,963.94	1,506.56	-1,366.69	1,304,006.87	3,165,910.88	40.166370	-104.906334	
7,400.00	29.82	76.11	7,053.57	1,519.92	-1,324.61	1,304,020.51	3,165,952.87	40.166406	-104.906183	
7,500.00	37.25	81.54	7,136.89	1,530.36	-1,270.45	1,304,031.32	3,166,006.96	40.166435	-104.905989	
7,600.00	44.84	85.37	7,212.27	1,537.67	-1,205.27	1,304,039.07	3,166,072.09	40.166455	-104.905756	
7,700.00	52.54	88.28	7,278.24	1,541.71	-1,130.34	1,304,043.62	3,166,146.99	40.166466	-104.905488	
7,800.00	60.29	90.65	7,333.52	1,542.41	-1,047.10	1,304,044.88	3,166,230.22	40.166468	-104.905190	
7,900.00	68.08	92.67	7,377.03	1,539.75	-957.20	1,304,042.82	3,166,320.14	40.166461	-104.904868	
8,000.00	75.90	94.49	7,407.93	1,533.78	-862.36	1,304,037.50	3,166,415.01	40.166444	-104.904529	
8,100.00	83.72	96.18	7,425.61	1,524.62	-764.45	1,304,028.99	3,166,512.99	40.166419	-104.904179	
8,180.20	90.00	97.50	7,430.00	1,515.08	-684.98	1,304,019.99	3,166,592.52	40.166393	-104.903894	
<b>LP 90 Inc, 97.5 Az - SHELEY 3C-4H-M267 TPZ</b>										
8,200.00	90.00	97.50	7,430.00	1,512.50	-665.35	1,304,017.54	3,166,612.16	40.166386	-104.903824	
8,300.00	90.00	97.50	7,430.00	1,499.45	-566.21	1,304,005.16	3,166,711.40	40.166350	-104.903469	
8,400.00	90.00	97.50	7,430.00	1,486.39	-467.06	1,303,992.78	3,166,810.63	40.166314	-104.903115	
8,500.00	90.00	97.50	7,430.00	1,473.34	-367.92	1,303,980.39	3,166,909.86	40.166279	-104.902760	
8,600.00	90.00	97.50	7,430.00	1,460.29	-268.77	1,303,968.01	3,167,009.09	40.166243	-104.902405	
8,700.00	90.00	97.50	7,430.00	1,447.24	-169.63	1,303,955.63	3,167,108.32	40.166207	-104.902050	
8,800.00	90.00	97.50	7,430.00	1,434.18	-70.48	1,303,943.24	3,167,207.55	40.166171	-104.901695	
8,900.00	90.00	97.50	7,430.00	1,421.13	28.66	1,303,930.86	3,167,306.78	40.166135	-104.901341	
9,000.00	90.00	97.50	7,430.00	1,408.08	127.80	1,303,918.48	3,167,406.01	40.166099	-104.900986	
9,100.00	90.00	97.50	7,430.00	1,395.03	226.95	1,303,906.10	3,167,505.24	40.166064	-104.900631	
9,200.00	90.00	97.50	7,430.00	1,381.97	326.09	1,303,893.71	3,167,604.47	40.166028	-104.900276	
9,300.00	90.00	97.50	7,430.00	1,368.92	425.24	1,303,881.33	3,167,703.70	40.165992	-104.899922	
9,400.00	90.00	97.50	7,430.00	1,355.87	524.38	1,303,868.95	3,167,802.93	40.165956	-104.899567	
9,500.00	90.00	97.50	7,430.00	1,342.82	623.53	1,303,856.56	3,167,902.16	40.165920	-104.899212	
9,600.00	90.00	97.50	7,430.00	1,329.76	722.67	1,303,844.18	3,168,001.39	40.165884	-104.898857	
9,700.00	90.00	97.50	7,430.00	1,316.71	821.82	1,303,831.80	3,168,100.62	40.165849	-104.898503	
9,800.00	90.00	97.50	7,430.00	1,303.66	920.96	1,303,819.41	3,168,199.85	40.165813	-104.898148	
9,900.00	90.00	97.50	7,430.00	1,290.60	1,020.11	1,303,807.03	3,168,299.08	40.165777	-104.897793	
10,000.00	90.00	97.50	7,430.00	1,277.55	1,119.25	1,303,794.65	3,168,398.31	40.165741	-104.897438	

<b>Database:</b>	EDM 5000.15 Single User Db	<b>Local Co-ordinate Reference:</b>	Well SHELEY 3C-4H-M267
<b>Company:</b>	Crestone Peak Resources	<b>TVD Reference:</b>	RKB @ 4932.00usft
<b>Project:</b>	Sec 4 T2N-R67W	<b>MD Reference:</b>	RKB @ 4932.00usft
<b>Site:</b>	Sheley Pad	<b>North Reference:</b>	True
<b>Well:</b>	SHELEY 3C-4H-M267	<b>Survey Calculation Method:</b>	Minimum Curvature
<b>Wellbore:</b>	Wellbore #1		
<b>Design:</b>	Plan #3 25Jun18 kjs		

Planned Survey										
Measured Depth (usft)	Inclination (°)	Azimuth (°)	Vertical Depth (usft)	+N/-S (usft)	+E/-W (usft)	Map Northing (usft)	Map Easting (usft)	Latitude	Longitude	
10,100.00	90.00	97.50	7,430.00	1,264.50	1,218.39	1,303,782.26	3,168,497.54	40.165705	-104.897084	
10,180.20	90.00	97.50	7,430.00	1,254.03	1,297.91	1,303,772.33	3,168,577.13	40.165676	-104.896799	
<b>Start Turn -2.00</b>										
10,200.00	90.00	97.10	7,430.00	1,251.51	1,317.55	1,303,769.95	3,168,596.78	40.165670	-104.896729	
10,300.00	90.00	95.10	7,430.00	1,240.88	1,416.98	1,303,759.99	3,168,696.28	40.165640	-104.896373	
10,380.20	90.00	93.50	7,430.00	1,234.87	1,496.95	1,303,754.51	3,168,776.29	40.165624	-104.896087	
<b>Hold 93.5 Az</b>										
10,400.00	90.00	93.50	7,430.00	1,233.66	1,516.71	1,303,753.44	3,168,796.06	40.165620	-104.896016	
10,500.00	90.00	93.50	7,430.00	1,227.55	1,616.52	1,303,748.01	3,168,895.91	40.165604	-104.895659	
10,600.00	90.00	93.50	7,430.00	1,221.45	1,716.34	1,303,742.57	3,168,995.76	40.165587	-104.895302	
10,700.00	90.00	93.50	7,430.00	1,215.34	1,816.15	1,303,737.14	3,169,095.62	40.165570	-104.894945	
10,800.00	90.00	93.50	7,430.00	1,209.24	1,915.96	1,303,731.71	3,169,195.47	40.165553	-104.894588	
10,900.00	90.00	93.50	7,430.00	1,203.13	2,015.78	1,303,726.28	3,169,295.32	40.165537	-104.894230	
11,000.00	90.00	93.50	7,430.00	1,197.03	2,115.59	1,303,720.85	3,169,395.17	40.165520	-104.893873	
11,100.00	90.00	93.50	7,430.00	1,190.92	2,215.40	1,303,715.42	3,169,495.03	40.165503	-104.893516	
11,200.00	90.00	93.50	7,430.00	1,184.82	2,315.22	1,303,709.99	3,169,594.88	40.165486	-104.893159	
11,300.00	90.00	93.50	7,430.00	1,178.71	2,415.03	1,303,704.56	3,169,694.73	40.165469	-104.892802	
11,400.00	90.00	93.50	7,430.00	1,172.61	2,514.84	1,303,699.13	3,169,794.58	40.165453	-104.892445	
11,500.00	90.00	93.50	7,430.00	1,166.50	2,614.66	1,303,693.70	3,169,894.43	40.165436	-104.892088	
11,600.00	90.00	93.50	7,430.00	1,160.40	2,714.47	1,303,688.26	3,169,994.29	40.165419	-104.891730	
11,700.00	90.00	93.50	7,430.00	1,154.29	2,814.29	1,303,682.83	3,170,094.14	40.165402	-104.891373	
11,800.00	90.00	93.50	7,430.00	1,148.19	2,914.10	1,303,677.40	3,170,193.99	40.165386	-104.891016	
11,900.00	90.00	93.50	7,430.00	1,142.08	3,013.91	1,303,671.97	3,170,293.84	40.165369	-104.890659	
12,000.00	90.00	93.50	7,430.00	1,135.98	3,113.73	1,303,666.54	3,170,393.70	40.165352	-104.890302	
12,100.00	90.00	93.50	7,430.00	1,129.87	3,213.54	1,303,661.11	3,170,493.55	40.165335	-104.889945	
12,200.00	90.00	93.50	7,430.00	1,123.77	3,313.35	1,303,655.68	3,170,593.40	40.165318	-104.889588	
12,300.00	90.00	93.50	7,430.00	1,117.66	3,413.17	1,303,650.25	3,170,693.25	40.165302	-104.889230	
12,400.00	90.00	93.50	7,430.00	1,111.56	3,512.98	1,303,644.82	3,170,793.11	40.165285	-104.888873	
12,500.00	90.00	93.50	7,430.00	1,105.46	3,612.79	1,303,639.39	3,170,892.96	40.165268	-104.888516	
12,600.00	90.00	93.50	7,430.00	1,099.35	3,712.61	1,303,633.95	3,170,992.81	40.165251	-104.888159	
12,700.00	90.00	93.50	7,430.00	1,093.25	3,812.42	1,303,628.52	3,171,092.66	40.165234	-104.887802	
12,730.09	90.00	93.50	7,430.00	1,091.41	3,842.46	1,303,626.89	3,171,122.71	40.165229	-104.887694	
<b>TD at 12730.09 - SHELEY 3C-4H-M267 BHL</b>										

Design Targets										
Target Name - hit/miss target - Shape	Dip Angle (°)	Dip Dir. (°)	TVD (usft)	+N/-S (usft)	+E/-W (usft)	Northing (usft)	Easting (usft)	Latitude	Longitude	
SHELEY 3C-4H-M267 T - plan hits target center - Point	0.00	0.00	7,430.00	1,515.08	-684.98	1,304,019.99	3,166,592.52	40.166393	-104.903894	
SHELEY 3C-4H-M267 B - plan misses target center by 0.01usft at 12730.09usft MD (7430.00 TVD, 1091.41 N, 3842.46 E) - Point	0.00	0.00	7,430.00	1,091.40	3,842.46	1,303,626.88	3,171,122.72	40.165229	-104.887694	



Planning Report - Geographic

<b>Database:</b>	EDM 5000.15 Single User Db	<b>Local Co-ordinate Reference:</b>	Well SHELEY 3C-4H-M267
<b>Company:</b>	Crestone Peak Resources	<b>TVD Reference:</b>	RKB @ 4932.00usft
<b>Project:</b>	Sec 4 T2N-R67W	<b>MD Reference:</b>	RKB @ 4932.00usft
<b>Site:</b>	Sheley Pad	<b>North Reference:</b>	True
<b>Well:</b>	SHELEY 3C-4H-M267	<b>Survey Calculation Method:</b>	Minimum Curvature
<b>Wellbore:</b>	Wellbore #1		
<b>Design:</b>	Plan #3 25Jun18 kjs		

Plan Annotations					
Measured Depth (usft)	Vertical Depth (usft)	Local Coordinates		Comment	
		+N/-S (usft)	+E/-W (usft)		
200.00	200.00	0.00	0.00	Start Build 2.00	
1,136.64	1,120.04	108.35	-106.25	Hold 18.73 Inc, 315.56 Az	
6,872.11	6,551.69	1,423.48	-1,395.94	KOP 8/100	
8,180.20	7,430.00	1,515.08	-684.98	LP 90 Inc, 97.5 Az	
10,180.20	7,430.00	1,254.03	1,297.91	Start Turn -2.00	
10,380.20	7,430.00	1,234.87	1,496.95	Hold 93.5 Az	
12,730.09	7,430.00	1,091.41	3,842.46	TD at 12730.09	