



CRESTONE PEAK
RESOURCES

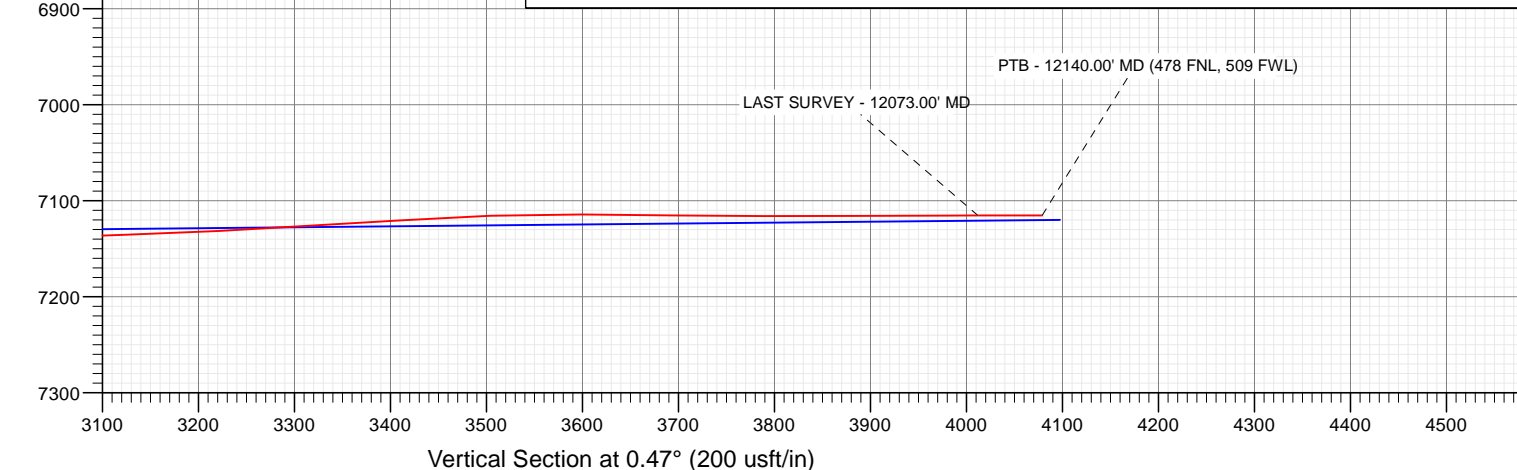
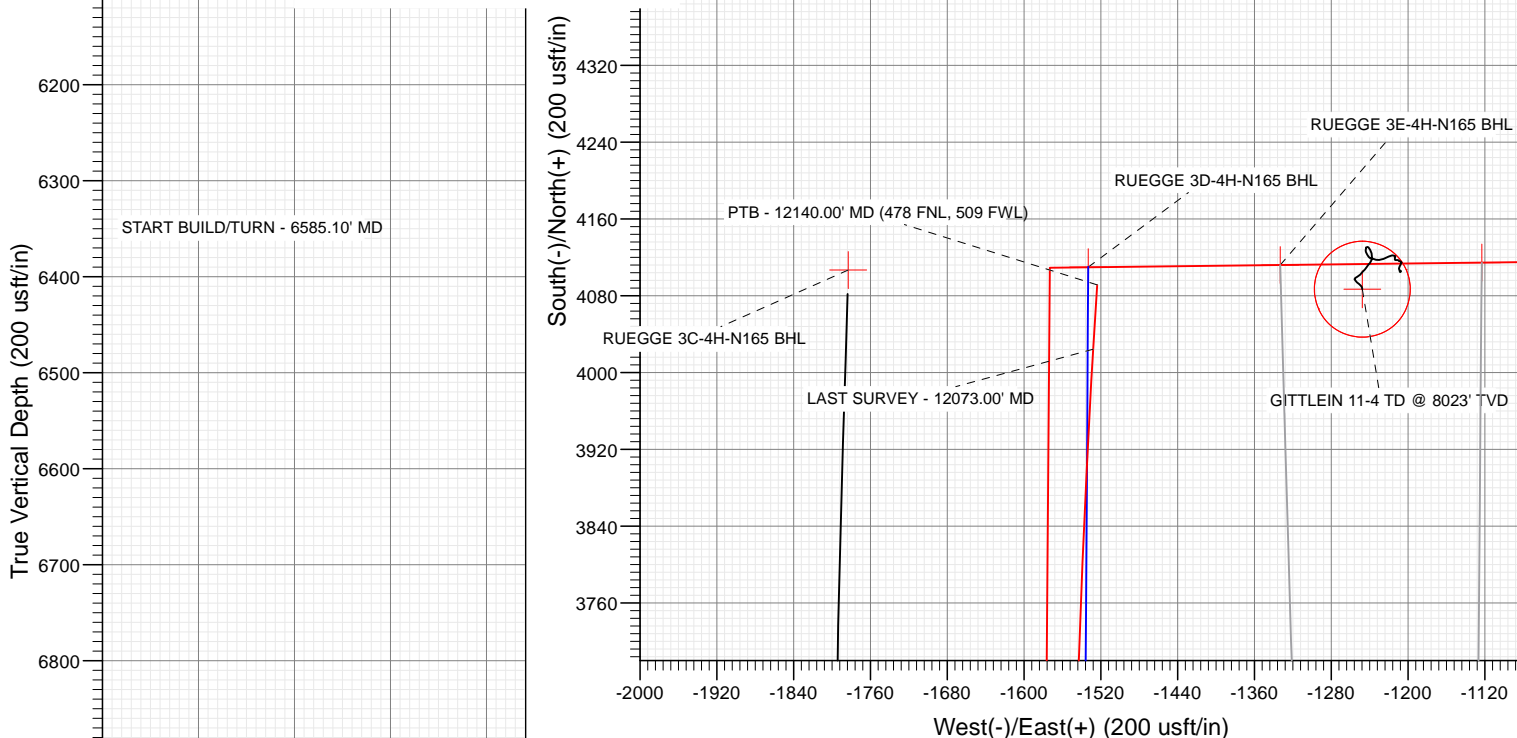
SECTION DETAILS

Sec	MD	Inc	Azi	TVD	+N/-S	+E/-W	Dleg	TFace	Vsect	Target
1	0.00	0.00	0.00	0.00	0.00	0.00	0.00	0.00	0.00	
2	400.00	0.00	0.00	400.00	0.00	0.00	0.00	0.00	0.00	
3	1232.04	16.64	235.51	1220.39	-67.94	-98.89	2.00	235.51	-68.75	
4	6585.10	16.64	235.51	6349.27	-935.96	-1362.41	0.00	0.00	-947.11	
5	7835.78	90.66	0.34	7158.00	-220.22	-1558.97	8.00	123.53	-233.00	RUEGGE 3D (-233' VS)
6	9311.89	90.66	0.34	7141.00	1255.76	-1550.17	0.00	0.00	1243.00	RUEGGE 3D 1243' VS
7	9331.82	90.26	0.34	7140.84	1275.69	-1550.05	2.00	-180.00	1262.94	
8	10590.44	90.26	0.34	7135.10	2534.27	-1542.55	0.00	0.00	2521.54	
9	10604.91	90.55	0.34	7135.00	2548.74	-1542.46	2.00	0.00	2536.00	RUEGGE 3D 2536' VS
10	12166.09	90.55	0.34	7120.00	4109.83	-1533.15	0.00	0.00	4097.11	RUEGGE 3D-4H-N165 BHL

FINAL
RUEGGE 3D-4H-N165
326137 185084; 361537 185133 LR
23' KB @ 4940.00usft
Ground Level @ 4917.00
North American Datum 1983
Well RUEGGE 3D-4H-N165 - Slot RUEGGE 3D-4H-N165 SHL, True North

Type	Target	No Target (Freehand)	Azimuth	Origin	Type	N/S	E/W	From	TVD
Name			0.47	Slot		0.00	0.00	0.00	
RUEGGE 3D-4H-N165 BHL									
RUEGGE 3D 2536' VS									
RUEGGE 3D 1243' VS									
RUEGGE 3D (-233' VS)									
RUEGGE 3D-4H-N165 TPZ									

Project: DJ BASIN
Site: S4-T1N-R65W (RUEGGE)
Well: RUEGGE 3D-4H-N165
Wellbore: OH
Design: FINAL



WELL DETAILS: RUEGGE 3D-4H-N165

+N/-S	+E/-W	Northing	Easting	4917.00	Latitude	Longitude
0.00	0.00	1271335.24	3231981.84		40.075229	-104.671021

CATHEDRAL



Cathedral Energy Services

Survey Report

Company:	Crestone Peak Resources	Local Co-ordinate Reference:	Well RUEGGE 3D-4H-N165 - Slot RUEGGE 3D-4
Project:	DJ BASIN	TVD Reference:	23' KB @ 4940.00usft
Site:	S4-T1N-R65W (RUEGGE)	MD Reference:	23' KB @ 4940.00usft
Well:	RUEGGE 3D-4H-N165	North Reference:	True
Wellbore:	OH	Survey Calculation Method:	Minimum Curvature
Design:	FINAL	Database:	USA EDM 5000 Multi Users DB

Project	DJ BASIN		
Map System:	US State Plane 1983	System Datum:	Mean Sea Level
Geo Datum:	North American Datum 1983		
Map Zone:	Colorado Northern Zone		

Site		S4-T1N-R65W (RUEGGE)			
Site Position:		Northing:	1,271,333.68 usft	Latitude:	40.075225
From:	Map	Easting:	3,231,971.96 usft	Longitude:	-104.671056
Position Uncertainty:	0.00 usft	Slot Radius:	13-3/16 "	Grid Convergence:	0.54 °

Well	RUEGGE 3D-4H-N165 - Slot RUEGGE 3D-4H-N165 SHL					
Well Position	+N/-S	0.00 usft	Northing:	1,271,335.24 usft	Latitude:	40.075229
	+E/-W	0.00 usft	Easting:	3,231,981.84 usft	Longitude:	-104.671021
Position Uncertainty		0.00 usft	Wellhead Elevation:	usft	Ground Level:	4,917.00 usft

Wellbore	OH				
Magnetics	Model Name	Sample Date	Declination (°)	Dip Angle (°)	Field Strength (nT)
	HDGM	5/26/2018	8.17	66.47	52,120.20000000

Design	FINAL				
Audit Notes:					
Version:	1.0	Phase:	ACTUAL	Tie On Depth:	0.00
Vertical Section:	Depth From (TVD) (usft)	+N/-S (usft)	+E/-W (usft)	Direction (°)	
	0.00	0.00	0.00	0.47	

Survey Program	Date	6/3/2018			
From (usft)	To (usft)	Survey (Wellbore)	Tool Name	Description	
111.00	2,452.00	Survey #1 (OH)	VESSI_GYROFLEX	VESSI Gyroflex Gyro	
2,565.00	12,140.00	Survey #2 (OH)	MWD+HDGM	OWSG MWD + HDGM	

Survey										
Measured Depth (usft)	Inclination (°)	Azimuth (°)	Vertical Depth (usft)	+N/-S (usft)	+E/-W (usft)	Vertical Section (usft)	Dogleg Rate (°/100usf)	Build Rate (°/100u)	Formations / Comments	
10.00	0.00	0.00	10.00	0.00	0.00	0.00	0.00	0.00		
111.00	0.13	156.87	111.00	-0.11	0.05	-0.10	0.13	0.13		
142.00	0.19	191.87	142.00	-0.19	0.05	-0.19	0.36	0.19		
172.00	0.21	229.77	172.00	-0.27	0.00	-0.27	0.44	0.07		
263.00	0.13	222.47	263.00	-0.46	-0.20	-0.46	0.09	-0.09		
355.00	0.11	215.61	355.00	-0.60	-0.32	-0.61	0.03	-0.02		
385.00	0.27	231.09	385.00	-0.67	-0.39	-0.68	0.56	0.53		
467.00	1.21	215.61	466.99	-1.50	-1.05	-1.51	1.16	1.15		
550.00	2.58	244.98	549.95	-3.00	-3.25	-3.03	1.97	1.65		
633.00	3.84	230.03	632.81	-5.58	-7.08	-5.63	1.81	1.52		
692.00	4.38	226.19	691.66	-8.40	-10.22	-8.49	1.03	0.92		
774.00	6.15	226.95	773.31	-13.57	-15.69	-13.70	2.16	2.16		

Cathedral Energy Services

Survey Report

Company:	Crestone Peak Resources	Local Co-ordinate Reference:	Well RUEGGE 3D-4H-N165 - Slot RUEGGE 3D-4
Project:	DJ BASIN	TVD Reference:	23' KB @ 4940.00usft
Site:	S4-T1N-R65W (RUEGGE)	MD Reference:	23' KB @ 4940.00usft
Well:	RUEGGE 3D-4H-N165	North Reference:	True
Wellbore:	OH	Survey Calculation Method:	Minimum Curvature
Design:	FINAL	Database:	USA EDM 5000 Multi Users DB

Survey

Measured Depth (usft)	Inclination (°)	Azimuth (°)	Vertical Depth (usft)	+N/-S (usft)	+E/-W (usft)	Vertical Section (usft)	Dogleg Rate (°/100usf)	Build Rate (°/100u)	Formations / Comments
857.00	8.48	230.96	855.63	-20.46	-23.69	-20.66	2.87	2.81	
939.00	10.88	236.45	936.46	-28.55	-34.84	-28.83	3.13	2.93	
1,022.00	12.94	235.43	1,017.67	-38.15	-49.02	-38.55	2.49	2.48	
1,105.00	15.33	236.18	1,098.15	-49.53	-65.79	-50.07	2.89	2.88	
1,188.00	16.61	236.03	1,177.95	-62.27	-84.74	-62.96	1.54	1.54	
1,271.00	17.31	233.41	1,257.34	-76.26	-104.50	-77.11	1.25	0.84	
1,355.00	16.85	236.63	1,337.63	-90.40	-124.70	-91.42	1.25	-0.55	
1,438.00	16.56	237.12	1,417.13	-103.44	-144.68	-104.63	0.39	-0.35	
1,519.00	17.10	235.78	1,494.66	-116.41	-164.22	-117.75	0.82	0.67	
1,602.00	17.91	235.09	1,573.82	-130.57	-184.77	-132.08	1.01	0.98	
1,687.00	17.08	238.54	1,654.89	-144.57	-206.14	-146.25	1.56	-0.98	
1,772.00	16.82	239.41	1,736.20	-157.34	-227.38	-159.20	0.43	-0.31	
1,855.00	16.76	239.54	1,815.66	-169.52	-248.03	-171.55	0.09	-0.07	
1,936.00	17.01	240.82	1,893.17	-181.22	-268.44	-183.41	0.55	0.31	
2,021.00	16.79	241.86	1,974.49	-193.07	-290.12	-195.44	0.44	-0.26	
2,100.00	16.51	239.67	2,050.18	-204.12	-309.87	-206.65	0.87	-0.35	
2,184.00	17.09	236.88	2,130.60	-216.89	-330.51	-219.59	1.18	0.69	
2,266.00	17.59	236.64	2,208.87	-230.29	-350.95	-233.16	0.62	0.61	
2,350.00	16.61	233.55	2,289.16	-244.40	-371.21	-247.44	1.59	-1.17	
2,452.00	15.42	229.64	2,387.20	-261.84	-393.27	-265.06	1.57	-1.17	
2,565.00	15.07	228.95	2,496.23	-281.22	-415.80	-284.62	0.35	-0.31	
2,659.00	13.58	228.16	2,587.30	-296.61	-433.24	-300.15	1.60	-1.59	
2,754.00	15.34	223.85	2,679.29	-313.11	-450.25	-316.79	2.17	1.85	
2,848.00	16.35	225.79	2,769.72	-331.30	-468.35	-335.13	1.21	1.07	
2,943.00	17.80	225.08	2,860.53	-350.88	-488.22	-354.87	1.54	1.53	
3,037.00	20.39	230.53	2,949.36	-371.44	-511.04	-375.62	3.34	2.76	
3,132.00	18.50	228.78	3,038.93	-391.89	-535.15	-396.27	2.08	-1.99	
3,227.00	17.80	240.73	3,129.24	-408.93	-559.16	-413.50	3.98	-0.74	
3,322.00	15.21	240.38	3,220.32	-422.19	-582.67	-426.96	2.73	-2.73	
3,416.00	16.00	240.82	3,310.85	-434.60	-604.70	-439.55	0.85	0.84	
3,511.00	17.84	239.59	3,401.73	-448.35	-628.68	-453.50	1.97	1.94	
3,605.00	14.41	237.57	3,492.02	-461.92	-650.98	-467.24	3.70	-3.65	
3,700.00	14.94	238.09	3,583.92	-474.73	-671.35	-480.22	0.57	0.56	
3,794.00	17.10	240.38	3,674.27	-487.97	-693.66	-493.64	2.39	2.30	
3,889.00	18.11	240.90	3,764.82	-502.05	-718.70	-507.93	1.08	1.06	
3,984.00	17.23	237.13	3,855.34	-516.87	-743.42	-522.95	1.52	-0.93	
4,079.00	16.57	242.40	3,946.24	-530.78	-767.24	-537.06	1.76	-0.69	
4,173.00	17.93	229.83	4,036.04	-546.33	-790.19	-552.80	4.21	1.45	
4,268.00	20.74	234.40	4,125.68	-565.56	-815.04	-572.23	3.36	2.96	
4,373.00	19.20	235.81	4,224.36	-586.09	-844.44	-593.00	1.54	-1.47	
4,468.00	15.16	235.81	4,315.11	-601.85	-867.65	-608.95	4.25	-4.25	
4,563.00	15.73	238.36	4,406.68	-615.59	-888.89	-622.86	0.93	0.60	
4,657.00	19.25	236.95	4,496.32	-630.73	-912.73	-638.20	3.77	3.74	
4,752.00	17.10	234.23	4,586.57	-647.44	-937.20	-655.10	2.43	-2.26	
4,847.00	17.23	241.87	4,677.35	-662.24	-960.94	-670.10	2.38	0.14	
4,942.00	16.48	240.20	4,768.27	-675.57	-985.04	-683.62	0.94	-0.79	
5,036.00	13.54	237.65	4,859.06	-688.08	-1,005.91	-696.31	3.20	-3.13	
5,131.00	14.11	231.50	4,951.31	-701.24	-1,024.37	-709.62	1.66	0.60	
5,225.00	16.48	238.09	5,041.98	-715.43	-1,044.66	-723.97	3.12	2.52	
5,320.00	17.23	238.97	5,132.90	-729.80	-1,068.15	-738.54	0.83	0.79	
5,415.00	18.94	235.10	5,223.21	-745.88	-1,092.86	-754.82	2.20	1.80	
5,509.00	16.70	233.70	5,312.69	-762.60	-1,116.26	-771.74	2.43	-2.38	
5,603.00	15.43	237.21	5,403.02	-777.37	-1,137.66	-786.68	1.70	-1.35	

Cathedral Energy Services

Survey Report

Company:	Crestone Peak Resources	Local Co-ordinate Reference:	Well RUEGGE 3D-4H-N165 - Slot RUEGGE 3D-4
Project:	DJ BASIN	TVD Reference:	23' KB @ 4940.00usft
Site:	S4-T1N-R65W (RUEGGE)	MD Reference:	23' KB @ 4940.00usft
Well:	RUEGGE 3D-4H-N165	North Reference:	True
Wellbore:	OH	Survey Calculation Method:	Minimum Curvature
Design:	FINAL	Database:	USA EDM 5000 Multi Users DB

Survey									
Measured Depth (usft)	Inclination (°)	Azimuth (°)	Vertical Depth (usft)	+N/-S (usft)	+E/-W (usft)	Vertical Section (usft)	Dogleg Rate (°/100usf)	Build Rate (°/100u)	Formations / Comments
5,698.00	16.08	235.81	5,494.45	-791.61	-1,159.16	-801.09	0.79	0.68	
5,792.00	14.59	239.41	5,585.10	-804.95	-1,180.13	-814.61	1.88	-1.59	
5,887.00	12.39	240.82	5,677.48	-816.01	-1,199.33	-825.82	2.34	-2.32	
5,982.00	11.16	235.37	5,770.48	-826.21	-1,215.79	-836.15	1.74	-1.29	
6,076.00	12.48	242.49	5,862.49	-836.07	-1,232.29	-846.15	2.09	1.40	
6,171.00	10.33	261.73	5,955.64	-842.04	-1,249.83	-852.26	4.57	-2.26	
6,266.00	14.50	236.95	6,048.46	-849.76	-1,268.25	-860.13	7.03	4.39	
6,360.00	18.37	221.66	6,138.65	-867.26	-1,287.97	-877.79	6.14	4.12	
6,455.00	16.30	232.82	6,229.35	-886.50	-1,308.55	-897.21	4.11	-2.18	
6,549.00	18.28	235.81	6,319.10	-902.76	-1,331.26	-913.65	2.31	2.11	
6,644.00	19.03	259.10	6,409.24	-914.08	-1,358.83	-925.19	7.83	0.79	
6,739.00	18.11	274.48	6,499.34	-915.86	-1,388.78	-927.22	5.23	-0.97	
6,833.00	18.19	307.26	6,588.90	-905.81	-1,415.09	-917.38	10.73	0.09	
6,928.00	24.04	329.85	6,677.63	-880.03	-1,436.66	-891.79	10.45	6.16	
7,023.00	22.37	342.68	6,764.99	-846.02	-1,451.77	-857.90	5.59	-1.76	
7,117.00	27.69	350.68	6,850.16	-807.35	-1,460.65	-819.30	6.70	5.66	
7,212.00	37.31	353.05	6,930.19	-756.87	-1,467.72	-768.88	10.21	10.13	
7,307.00	45.75	352.61	7,001.24	-694.43	-1,475.60	-706.51	8.89	8.88	
7,401.00	54.76	352.79	7,061.28	-622.82	-1,484.76	-634.97	9.59	9.59	
7,496.00	64.78	352.70	7,109.05	-541.50	-1,495.12	-553.74	10.55	10.55	
7,591.00	76.64	353.84	7,140.38	-452.60	-1,505.58	-464.94	12.54	12.48	
7,685.00	86.22	359.65	7,154.38	-359.95	-1,510.79	-372.33	11.88	10.19	
7,780.00	89.82	356.66	7,157.67	-265.08	-1,513.84	-277.49	4.92	3.79	
7,812.02	89.63	356.54	7,157.82	-233.12	-1,515.74	-245.54	0.70	-0.60	TPZ - 7812.02 (460 FSL, 553 FWL)
7,875.00	89.25	356.31	7,158.44	-170.26	-1,519.67	-182.72	0.70	-0.60	
7,969.00	88.68	356.04	7,160.14	-76.49	-1,525.94	-89.00	0.67	-0.61	
8,064.00	90.00	357.18	7,161.23	18.33	-1,531.55	5.77	1.84	1.39	
8,159.00	89.17	357.01	7,161.92	113.21	-1,536.37	100.60	0.89	-0.87	
8,253.00	92.02	357.10	7,160.94	207.07	-1,541.20	194.42	3.03	3.03	
8,348.00	92.29	357.01	7,157.37	301.88	-1,546.07	289.18	0.30	0.28	
8,443.00	92.20	356.74	7,153.65	396.66	-1,551.25	383.92	0.30	-0.09	
8,538.00	92.24	0.79	7,149.97	491.55	-1,553.30	478.79	4.26	0.04	
8,633.00	92.37	0.44	7,146.15	586.47	-1,552.28	573.71	0.39	0.14	
8,727.00	92.29	359.65	7,142.32	680.39	-1,552.20	667.63	0.84	-0.09	
8,822.00	89.74	0.35	7,140.64	775.37	-1,552.20	762.61	2.78	-2.68	
8,916.00	89.03	358.85	7,141.65	869.35	-1,552.86	856.59	1.77	-0.76	
9,011.00	88.51	0.17	7,143.69	964.33	-1,553.67	951.55	1.49	-0.55	
9,105.00	87.98	0.00	7,146.57	1,058.28	-1,553.53	1,045.50	0.59	-0.56	
9,200.00	90.18	0.79	7,148.09	1,153.26	-1,552.88	1,140.48	2.46	2.32	
9,294.00	89.82	359.91	7,148.09	1,247.26	-1,552.30	1,234.48	1.01	-0.38	
9,389.00	91.63	0.61	7,146.89	1,342.25	-1,551.87	1,329.47	2.04	1.91	
9,484.00	91.10	359.91	7,144.63	1,437.22	-1,551.44	1,424.44	0.92	-0.56	
9,579.00	90.26	359.21	7,143.50	1,532.21	-1,552.17	1,519.42	1.15	-0.88	
9,673.00	91.49	1.23	7,142.07	1,626.19	-1,551.81	1,613.40	2.52	1.31	
9,768.00	91.71	0.52	7,139.41	1,721.14	-1,550.36	1,708.36	0.78	0.23	
9,863.00	91.54	0.52	7,136.72	1,816.10	-1,549.50	1,803.32	0.18	-0.18	
9,958.00	91.32	0.35	7,134.35	1,911.06	-1,548.78	1,898.29	0.29	-0.23	
10,052.00	90.88	359.91	7,132.54	2,005.05	-1,548.56	1,992.28	0.66	-0.47	
10,146.00	90.97	359.65	7,131.03	2,099.03	-1,548.92	2,086.26	0.29	0.10	
10,241.00	89.74	2.37	7,130.44	2,194.01	-1,547.25	2,181.24	3.14	-1.29	
10,336.00	90.31	3.07	7,130.40	2,288.90	-1,542.74	2,276.17	0.95	0.60	
10,430.00	88.73	359.29	7,131.18	2,382.85	-1,540.81	2,370.13	4.36	-1.68	
10,526.00	88.33	358.68	7,133.65	2,478.81	-1,542.51	2,466.07	0.76	-0.42	

Cathedral Energy Services

Survey Report

Company:	Crestone Peak Resources	Local Co-ordinate Reference:	Well RUEGGE 3D-4H-N165 - Slot RUEGGE 3D-4
Project:	DJ BASIN	TVD Reference:	23' KB @ 4940.00usft
Site:	S4-T1N-R65W (RUEGGE)	MD Reference:	23' KB @ 4940.00usft
Well:	RUEGGE 3D-4H-N165	North Reference:	True
Wellbore:	OH	Survey Calculation Method:	Minimum Curvature
Design:	FINAL	Database:	USA EDM 5000 Multi Users DB

Survey									
Measured Depth (usft)	Inclination (°)	Azimuth (°)	Vertical Depth (usft)	+N/-S (usft)	+E/-W (usft)	Vertical Section (usft)	Dogleg Rate (°/100usf)	Build Rate (°/100u)	Formations / Comments
10,620.00	89.08	0.00	7,135.77	2,572.77	-1,543.59	2,560.03	1.61	0.80	
10,715.00	88.86	0.00	7,137.48	2,667.76	-1,543.59	2,655.01	0.23	-0.23	
10,810.00	89.34	359.29	7,138.97	2,762.74	-1,544.18	2,749.98	0.90	0.51	
10,904.00	88.95	358.68	7,140.37	2,856.72	-1,545.84	2,843.94	0.77	-0.41	
10,999.00	90.84	359.47	7,140.55	2,951.70	-1,547.38	2,938.91	2.16	1.99	
11,093.00	91.93	0.08	7,138.28	3,045.67	-1,547.74	3,032.87	1.33	1.16	
11,187.00	91.58	359.56	7,135.40	3,139.63	-1,548.04	3,126.82	0.67	-0.37	
11,282.00	93.12	359.38	7,131.50	3,234.54	-1,548.92	3,221.72	1.63	1.62	
11,377.00	93.43	359.12	7,126.07	3,329.38	-1,550.16	3,316.55	0.43	0.33	
11,471.00	93.47	0.35	7,120.42	3,423.20	-1,550.59	3,410.37	1.31	0.04	
11,565.00	92.20	1.75	7,115.77	3,517.07	-1,548.87	3,504.24	2.01	-1.35	
11,660.00	89.60	2.19	7,114.28	3,611.99	-1,545.61	3,599.19	2.78	-2.74	
11,756.00	89.12	1.49	7,115.35	3,707.93	-1,542.52	3,695.16	0.88	-0.50	
11,850.00	89.96	2.72	7,116.10	3,801.87	-1,539.07	3,789.11	1.58	0.89	
11,945.00	90.24	2.46	7,115.94	3,896.77	-1,534.78	3,884.05	0.40	0.29	
12,040.00	90.40	3.34	7,115.41	3,991.64	-1,529.97	3,978.96	0.94	0.17	
12,073.00	90.04	3.69	7,115.28	4,024.58	-1,527.95	4,011.91	1.52	-1.09	LAST SURVEY - 12073.00' MD
12,140.00	90.04	3.69	7,115.23	4,091.44	-1,523.64	4,078.81	0.00	0.00	PTB - 12140.00' MD (478 FNL, 509 FWL)

Targets									
Target Name	Dip Angle (°)	Dip Dir. (°)	TVD (usft)	+N/-S (usft)	+E/-W (usft)	Northing (usft)	Easting (usft)	Latitude	Longitude
RUEGGE 3D 1243' VS - hit/miss target - Shape - Point	0.00	0.00	7,141.00	1,255.76	-1,550.17	1,272,576.46	3,230,420.00	40.078676	-104.676561
- actual wellpath misses target center by 7.42usft at 9302.60usft MD (7148.11 TVD, 1255.86 N, -1552.31 E)									
RUEGGE 3D-4H-N165 f - actual wellpath misses target center by 21.24usft at 12140.00usft MD (7115.23 TVD, 4091.44 N, -1523.64 E)	0.00	0.00	7,120.00	4,109.83	-1,533.15	1,275,430.56	3,230,410.33	40.086511	-104.676501
- Point									
RUEGGE 3D 2536' VS - actual wellpath misses target center by 1.11usft at 10595.94usft MD (7135.34 TVD, 2548.72 N, -1543.52 E)	0.00	0.00	7,135.00	2,548.74	-1,542.46	1,273,869.45	3,230,415.62	40.082226	-104.676534
- Point									
RUEGGE 3D-4H-N165 1 - actual wellpath misses target center by 43.23usft at 7814.72usft MD (7157.84 TVD, -230.42 N, -1515.91 E)	0.00	0.00	7,158.00	-233.12	-1,559.05	1,271,087.56	3,230,425.04	40.074589	-104.676592
- Point									
RUEGGE 3D (-233' VS) - actual wellpath misses target center by 42.37usft at 7827.59usft MD (7157.93 TVD, -217.58 N, -1516.69 E)	0.00	0.00	7,158.00	-220.22	-1,558.97	1,271,100.46	3,230,424.99	40.074624	-104.676592
- Point									

Design Annotations					
Measured Depth (usft)	Vertical Depth (usft)	Local Coordinates		Comment	
		+N/-S (usft)	+E/-W (usft)		
7,812.02	7,157.82	-233.12	-1,515.74	TPZ - 7812.02 (460 FSL, 553 FWL)	
12,073.00	7,115.28	4,024.58	-1,527.95	LAST SURVEY - 12073.00' MD	
12,140.00	7,115.23	4,091.44	-1,523.64	PTB - 12140.00' MD (478 FNL, 509 FWL)	

Checked By: _____ Approved By: _____ Date: _____