

Perkins 32-22

Proposed WBD

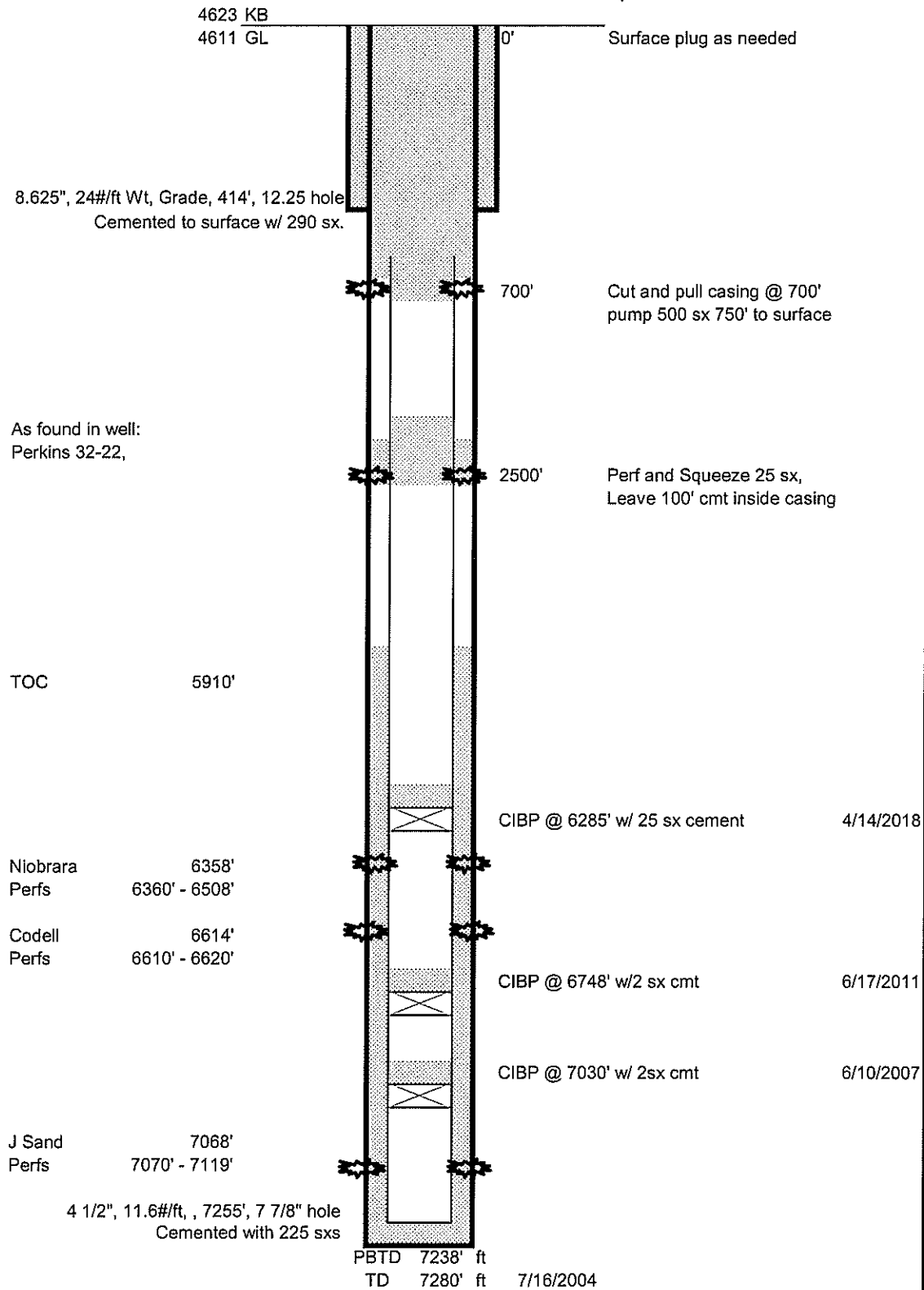
2055' FNL1910' FEL SWNE 22 5N 63W 6th PM

Lat 40.386 Long -104.41994

Weld County, Colorado

API #05-123-22034

Spud date 7/11/2004



Updated 10/1/2018 rcs

Perkins 32-22

Current WBD

2055' FNL1910' FEL SWNE 22 5N 63W 6th PM

Lat 40.386 Long -104.41994

Weld County, Colorado

API #05-123-22034

Spud date 7/11/2004

4633 KB

4621 GL

8.625", 24#/ft Wt, Grade, 414', 12.25 hole
Cemented to surface w/ 290 sx.

TOC 5910'

Niobrara 6358'
Perfs 6360' - 6508'

Codell 6614'
Perfs 6610' - 6620'

J Sand 7068'
Perfs 7070' - 7119'

4 1/2", 11.6#/ft, 7255', 7 7/8" hole
Cemented with 225 sxs

PBTD 7238' ft

TD 7280' ft 7/16/2004

CIBP @ 6285' w/ 25 sx cement

4/14/2018

CIBP @ 6748' w/ 2 sx cmt

6/17/2011

CIBP @ 7030' w/ 2sx cmt

6/10/2007

Updated

9/13/2018

rcs

WORK OVER PROCEDURE

WELLNAME: Perkins 32-22

API # 05-123-22034

Location: 2055' FNL 1010' FEL SWNE 22 5N 63W 0th PM

SPUD DATE: 7/11/2004

SURFACE CASING SIZE: 8.625", 24#/ft Wt, Grade, 414', 12.25' hole

SURFACE CEMENT: Cemented to surface w/ 290 sx.

REMEDIAL CEMENT: NA

TD: 7280'

AQUIFER DEPTH:

ORIGINAL COMPLETION

FORMATION TOPS:	As found in well:	Perkins 32-22
	Niobrara	6358' '
	Codell	6614' '

PLUGGING PROCEDURE:

- 1) MIRU ON LOCATION. ND WH, NU BOP, RU WORK FLOOR, CONTROL WELL, TOOH WITH 2 3/8TH" TBG
- 2) MIRU WIRELINE. PERF SQUEEZE HOLES @2500'
- 3) SQUEEZE PERFS W/25 SX, LEAVING 100' IN CASING
- 4) MIRU WIRELINE. CUT AND PULL CASING @ 700'
- 5) TTH W/TUBING TO 750'. PUMP 500 SX CEMENT 750' TO SURFACE
- 6) ND BOP. CUT OFF BELL NIPPLE & CASING TO 4' BELOW GROUND LEVEL. FILL TOP OF CASING WITH READY MIX
- 7) WELD ON PLATE. OPERATOR NAME, API NO., LOCATION
- 8) FILL SURFACE HOLE, MAKING SURE TO REPLACE TOP SOIL LAST
- 9) RIG DOWN AND MOVE OUT ALL EQUIPMENT