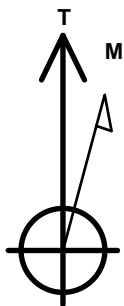


PDC Energy Inc. DJ Basin

Well Name: **Challenger 1N (Nio B)**
Surface Location: Challenger 4N64W8 Pad Sec.8-T4N-R64W
North American Datum 1983 , US State Plane 1983, Colorado Northern Zone
Ground Elevation: 4774.0
+N/-S +E/-W Northing Easting Latitude Longitude Slot
0.0 0.0 1364578.94 3257809.10 40.330480 -104.575260
Original Well Elev WELL @ 4797.0ft (Original Well Elev)

DESIGN TARGET DETAILS

Name	TVD	+N/-S	+E/-W	Shape
SHL 1328'FNL & 2431'FWL, Sec.8	1.0	0.0	0.0	Point
BHL 100'FNL & 150'FWL, Sec.7	6817.0	1161.1	-7316.7	Point
LPL 100'FNL & 1900'FWL, Sec.8	6817.0	1224.1	-529.7	Point
WP1 (1N)	6817.0	1194.3	-4993.2	Point



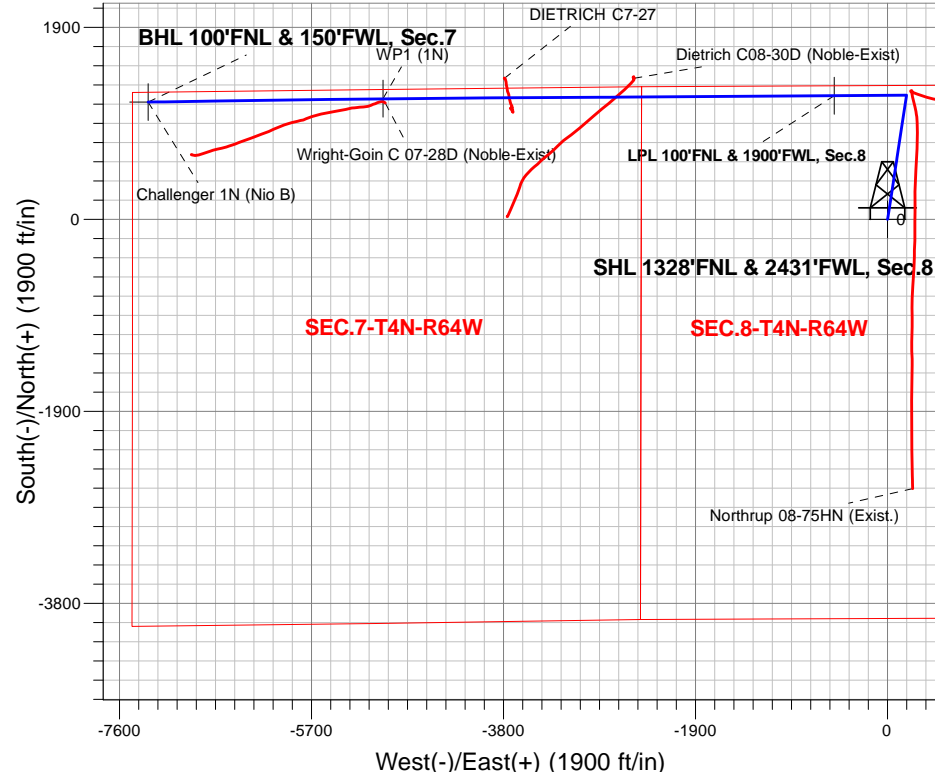
Azimuths to True North
Magnetic North: 7.81°

Magnetic Field
Strength: 52374.0snT
Dip Angle: 66.78°
Date: 6/27/2018
Model: IGRF2010

Challenger 4N64W8 Pad Sec.8-T4N-R64W
Challenger 1N (Nio B)
Plan #1 (6-27-18)
16:04 July 02 2018

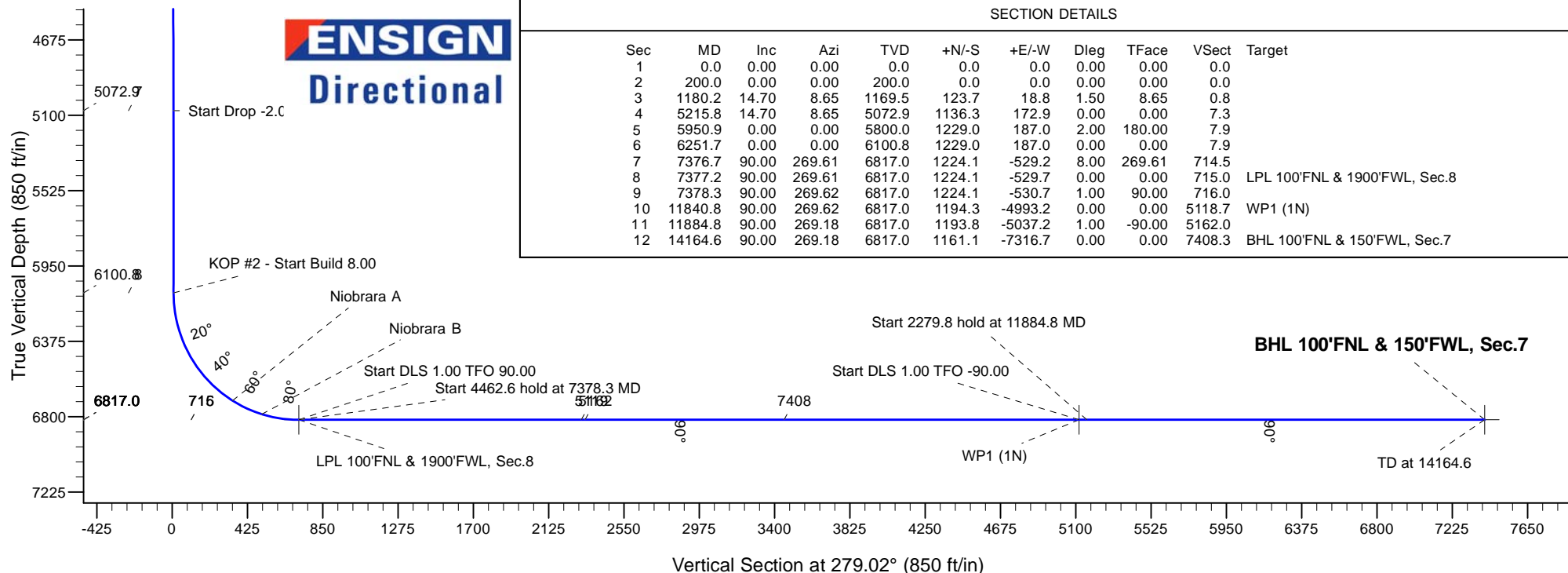
ANNOTATIONS

TVD	MD	Annotation
200.0	200.0	KOP - Start Build 1.50
5072.9	5215.8	Start Drop -2.00
6100.8	6251.7	KOP #2 - Start Build 8.00
6817.0	7377.2	Start DLS 1.00 TFO 90.00
6817.0	7378.3	Start 4462.6 hold at 7378.3 MD
6817.0	11840.8	Start DLS 1.00 TFO -90.00
6817.0	11884.8	Start 2279.8 hold at 11884.8 MD
6817.0	14164.6	TD at 14164.6



SECTION DETAILS

Sec	MD	Inc	Azi	TVD	+N/-S	+E/-W	Dleg	TFace	VSec	Target
1	0.0	0.00	0.00	0.0	0.0	0.0	0.00	0.00	0.0	
2	200.0	0.00	0.00	200.0	0.0	0.0	0.00	0.00	0.0	
3	1180.2	14.70	8.65	1169.5	123.7	18.8	1.50	8.65	0.8	
4	5215.8	14.70	8.65	5072.9	1136.3	172.9	0.00	0.00	7.3	
5	5950.9	0.00	0.00	5800.0	1229.0	187.0	2.00	180.00	7.9	
6	6251.7	0.00	0.00	6100.8	1229.0	187.0	0.00	0.00	7.9	
7	7376.7	90.00	269.61	6817.0	1224.1	-529.2	8.00	269.61	714.5	
8	7377.2	90.00	269.61	6817.0	1224.1	-529.7	0.00	0.00	715.0	LPL 100'FNL & 1900'FWL, Sec.8
9	7378.3	90.00	269.62	6817.0	1224.1	-530.7	1.00	90.00	716.0	
10	11840.8	90.00	269.62	6817.0	1194.3	-4993.2	0.00	0.00	5118.7	WP1 (1N)
11	11884.8	90.00	269.18	6817.0	1193.8	-5037.2	1.00	-90.00	5162.0	
12	14164.6	90.00	269.18	6817.0	1161.1	-7316.7	0.00	0.00	7408.3	BHL 100'FNL & 150'FWL, Sec.7



PDC Energy Inc. DJ Basin

SEC.8-T4N-R64W

Challenger 4N64W8 Pad Sec.8-T4N-R64W

Challenger 1N (Nio B)

Wellbore #1

Plan #1 (6-27-18)

Anticollision Report

02 July, 2018

