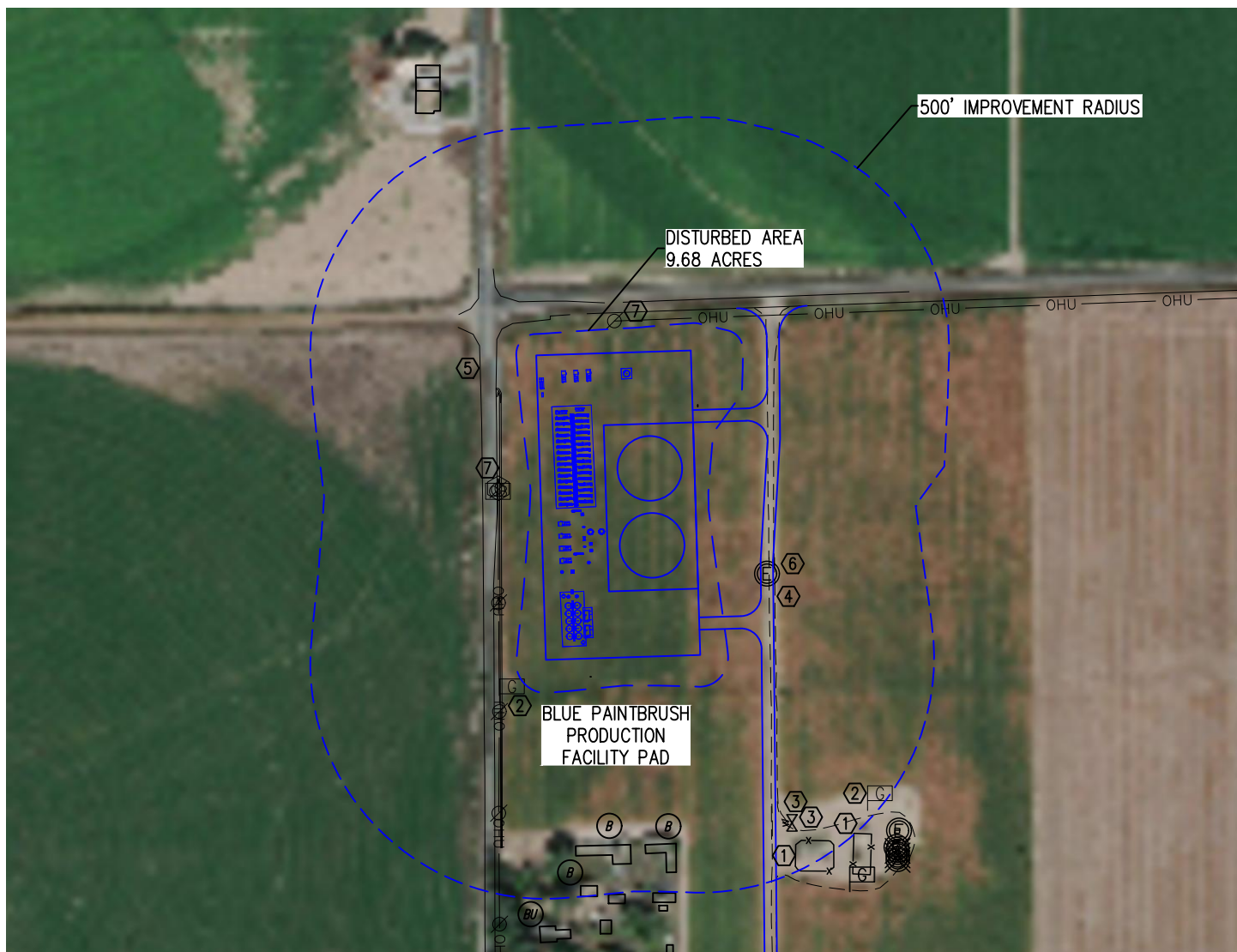


LOCATION DRAWING BLUE PAINTBRUSH PRODUCTION FACILITY PAD

NW1/4 SW1/4 SECTION 18, TOWNSHIP 2 NORTH, RANGE 68 WEST, 6TH P.M.



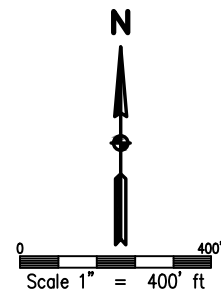
(FROM PRODUCTION EQUIPMENT)

NEAREST: BUILDING 485' S, BUILDING UNIT 679' S, HIGH OCCUPANCY BUILDING UNIT 5,280'+, DESIGNATED OUTSIDE ACTIVITY AREA 5,280'+
PUBLIC ROAD 105' W, ABOVE GROUND UTILITY 117' N, RAILROAD 5,280'+, PROPERTY LINE 93' W

IMPROVEMENTS (MEASURED FROM PRODUCTION EQUIPMENT):

- ① FENCE: 661' S, 704' SE
- ② GAS FLAG: 206' SW, 678 SE
- ③ WATER VALVE: 612' S, 613' S
- ④ GRAVEL ROAD: 172' E
- ⑤ ROAD: 105' W
- ⑥ EXISTING WELL HEAD: 168' E
- ⑦ OVERHEAD UTILITY: 117' N, 139' W
- Ⓑ BUILDING: 485' S, 504' S, 582' S

- Ⓟ PROPOSED WELL HEAD
- ⓔ EXISTING WELL HEAD
- ⊘ POWER POLE
- ⊗ ABANDONED WELL HEAD
- ⓐ GAS MARKER



NOTE:

The size, type and location of underground utilities shown hereon are approximate, and are based on markings made by utility locate companies. It is not guaranteed that all utilities have been located. It shall be the responsibility of the contractor to verify the existence of all underground utilities in the area of the work before commencing new construction.



DRAWN BY	RPM	CHECKED BY	AAD
INITIAL SUBMITTAL	5/18/2017		
REVISED	N/A		
DRAWING SIZE	8.5" X 11"		
JOB NO.	EXT02N68W18-01		
SHEET	1 OF 1		

BASELINE
Engineering - Planning - Surveying

4007 S. LINCOLN AVENUE, SUITE 405 - LOVELAND, COLORADO 80537
P: 970.353.7800 - F: 970.353.7801 - www.baselinecorp.com