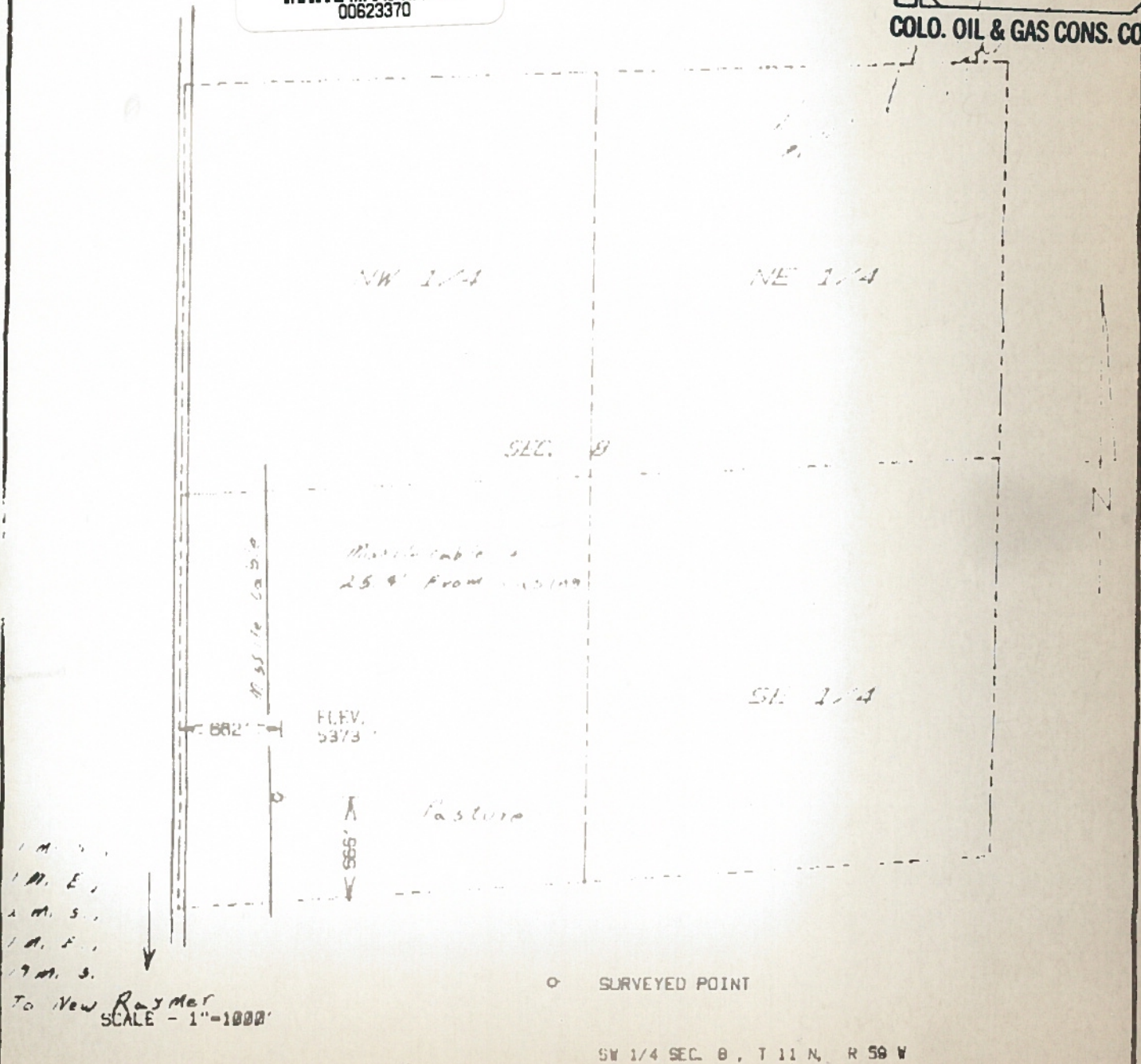


THE ACCOMPANYING PLAT IS AN ACCURATE REPRESENTATION SHOWING THE LOCATION OF A PROPOSED WELL. THIS LOCATION MAY BE DESCRIBED AS A POINT 666 FEET NORTH OF THE SOUTH LINE, AND 662 FEET EAST OF THE WEST LINE OF SECTION 8, TOWNSHIP 11 N RANGE 59 W OF THE 6th P.M., WELD COUNTY, COLORADO. THE SURFACE ELEVATION AT THIS POINT IS 5373 FEET m.s.



00623370

**RECEIVED**  
MAY 19 1988  
COLO. OIL & GAS CONS. COMM.



**HARMON**  
**ENGINEERING**  
**SERVICES**

HARMS FARMS (RE-ENTRY)

MEDALLION PETROLEUM INC.

WELD CO., COLORADO

10 MARCH 1988