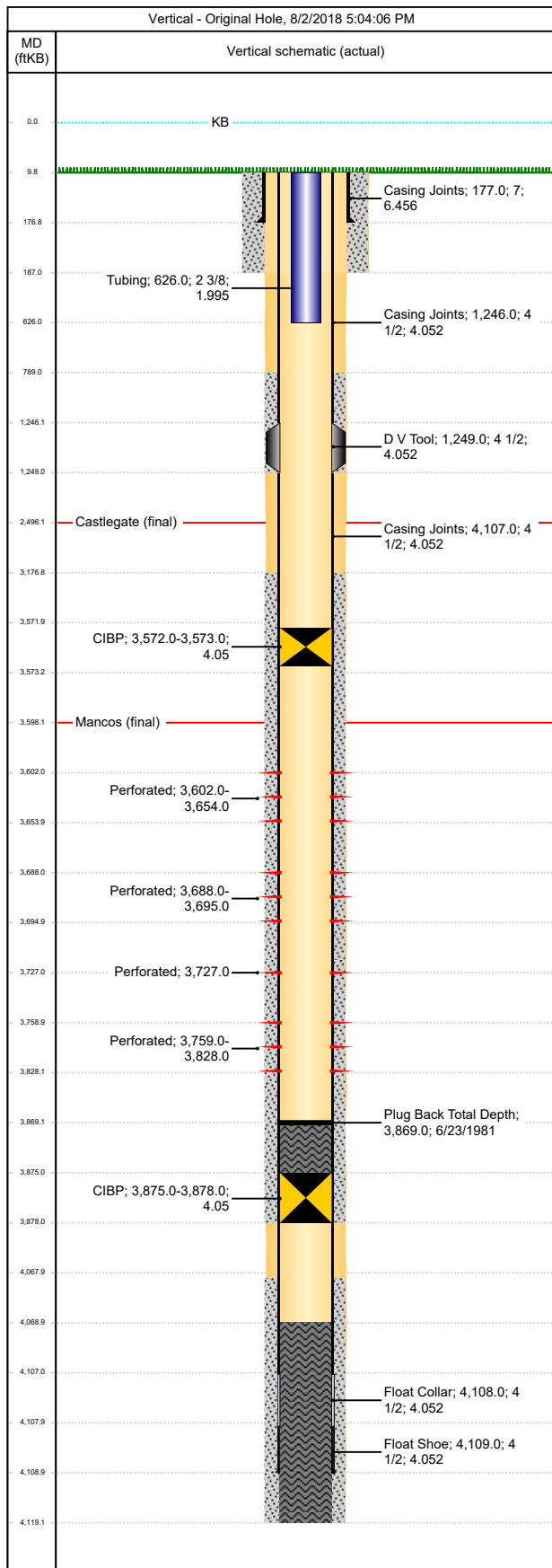




# UGC - Downhole Well Profile

Well Name: CATHEDRAL FEDERAL M-23-3-101-S

API/UWI 05103083590000	Surface Legal Location SWSW-S23-T3S-R101W-6PM	Field Name Cathedral	License #	State/Province CO	Well Configuration Type Vertical
Original KB Elevation (ft) 7,359	KB-Tubing Head Distance (ft) 10	Spud Date 7/30/1979 00:00	Rig Release Date 8/3/1979 00:00	PBTD (All) (ftKB) Original Hole - 3,869.0	Total Depth All (TVD) (ftKB) Original Hole - 4,119.0



Casing Strings								
Casing Description	OD (in)	Wt/Len (lb/ft)	String Grade	Top Connection	Set Depth (ftKB)			
Surface	7	20.00			177.0			
Casing Components								
Item Description	Length (ft)	ID (in)	Joints	Drift (in)	P Collapse (psi)	P Burst (psi)		
Casing Joints	167	6.456	4	6.331	2270	3740		
Casing Description	OD (in)	Wt/Len (lb/ft)	String Grade	Top Connection	Set Depth (ftKB)			
Production	4 1/2	10.50	K-55		4,109.0			
Casing Components								
Item Description	Length (ft)	ID (in)	Joints	Drift (in)	P Collapse (psi)	P Burst (psi)		
Casing Joints	1236	4.052	37	3.927	4010	4790		
Item Description	Length (ft)	ID (in)	Joints	Drift (in)	P Collapse (psi)	P Burst (psi)		
D V Tool	3	4.052	1					
Item Description	Length (ft)	ID (in)	Joints	Drift (in)	P Collapse (psi)	P Burst (psi)		
Casing Joints	2858	4.052	87	3.927	4010	4790		
Item Description	Length (ft)	ID (in)	Joints	Drift (in)	P Collapse (psi)	P Burst (psi)		
Float Collar	1	4.052	1					
Item Description	Length (ft)	ID (in)	Joints	Drift (in)	P Collapse (psi)	P Burst (psi)		
Float Shoe	1	4.052	1					
Perforations								
Date	Top (ftKB)	Btm (ftKB)	Shot Dens (shots/ft)	Entered Shot Total	Linked Zone			
8/16/1979	3602	3654	0.1	7	Mancos, Original Hole			
8/16/1979	3688	3695	0.4	3	Mancos, Original Hole			
8/16/1979	3727	3727	1.0	1	Mancos, Original Hole			
8/16/1979	3759	3828	0.1	10	Mancos, Original Hole			
Tubing Strings								
Tubing Description	Run Date	String Length (ft)			Set Depth (ftKB)			
Tubing - Workstring	7/25/2018	616.00			626.0			
Item Des	Jts	OD (in)	Wt (lb/ft)	Grade	Len (ft)	P Burst (psi)	P Collapse (psi)	Tensile Max (1000lbf)
Tubing	20	2 3/8	4.70	J-55	616	7700	8100	85
Rod Strings								
Rod Des	Run Date	Len (ft)	Set Depth (ftKB)	Comment				
Item Des	Jts	OD (in)	Wt (lb/ft)	Grade	Len (ft)	Com		
Other In Hole								
Description	OD (in)	Top (ftKB)	Run Date	Pull Date	Comment			
CIBP	4.052	3875	8/17/1979					
Description	OD (in)	Top (ftKB)	Run Date	Pull Date	Comment			
CIBP	4.052	3572	7/25/2018					
Cement Stages								
Stg #	Description	Top (ftKB)	Btm (ftKB)	Comment				
1	Surface Casing Cement	10	187	70 sx Thixotropic w/ 1/4 # floseal,				
1	Production Casing Cement	3177	3878	80 sx 50-50 poz-mix w/ 2 % gel, 0.6% fl additive, 2% CaCl2 and 1/4 #/sx LCM.				
2	Production Casing Cement	789	1249	40 sx Class "B" w/ 4% gel, 2% CaCl2, 1/4 #/sx LCM.				
3	Production Casing	4068	4119	Comment Part of stage 2 but free pipe from 3878' to 4068				
1	Cement Plug	4069	4119	Comment				
1	Cement on Top of Plug	3869	3875	Comment 2 sx Class "A" on top of BP.				