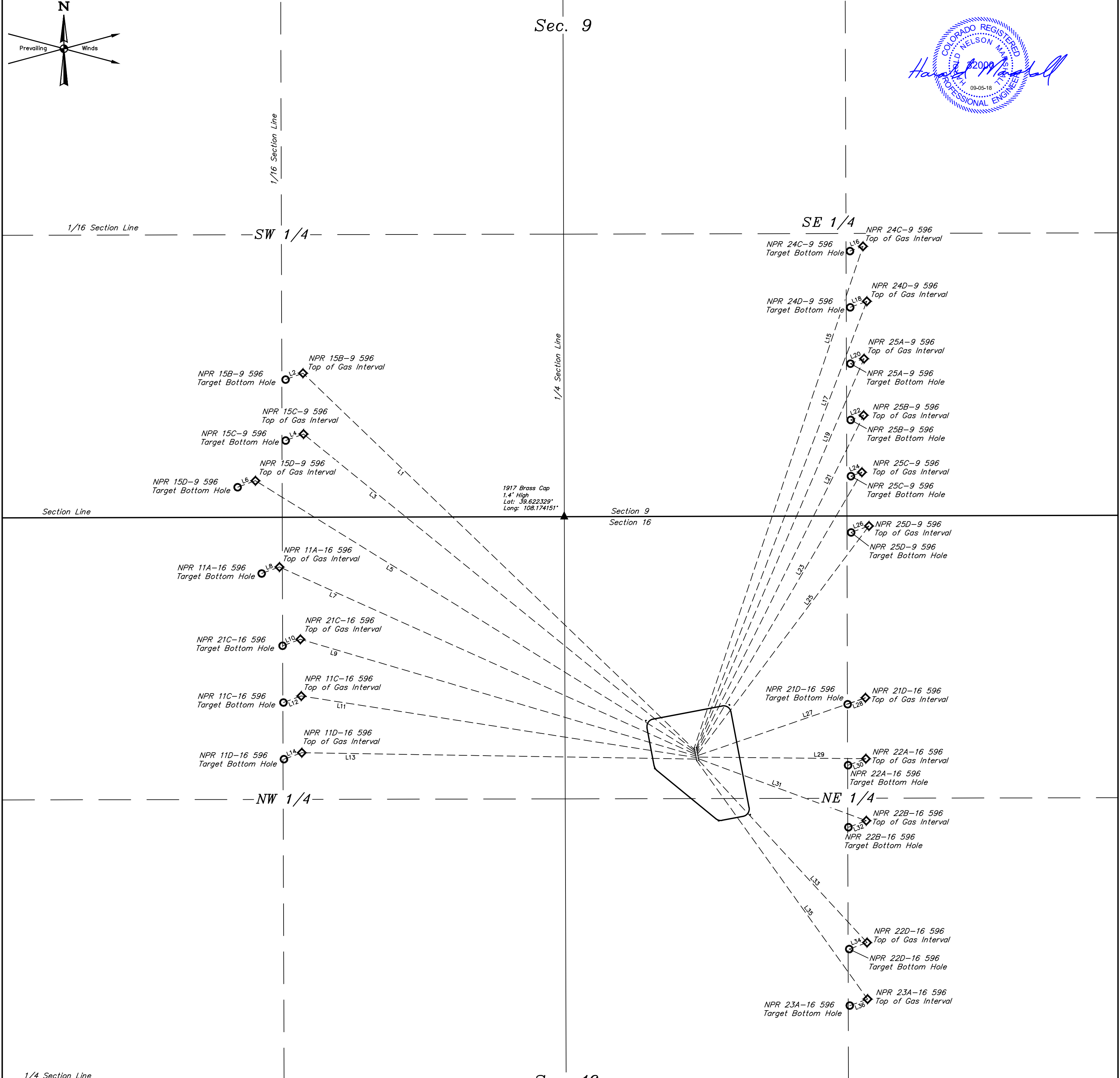


Sec. 9



Sec. 16

LINE TABLE		
LINE	DIRECTION	LENGTH
L1	N46°07'41"W	2540.38'
L2	S69°59'55"W	86.84'
L3	N50°58'41"W	2356.11'
L4	S70°00'13"W	88.77'
L5	N58°15'15"W	2418.44'
L6	S70°00'05"W	88.77'
L7	N65°45'02"W	2133.82'
L8	S69°59'54"W	88.77'
L9	N73°33'41"W	1927.92'
L10	S70°00'08"W	88.77'
L11	N81°08'43"W	1868.80'
L12	S70°00'09"W	88.77'
L13	N89°04'29"W	1845.80'
L14	S70°00'02"W	88.77'
L15	N18°35'28"E	2475.93'
L16	S70°00'06"W	64.69'
L17	N20°54'38"E	2235.06'
L18	S70°00'14"W	82.79'

LINE TABLE		
LINE	DIRECTION	LENGTH
L19	N23°12'20"E	1987.58'
L20	S69°59'56"W	67.69'
L21	N26°25'17"E	1752.90'
L22	S69°59'54"W	64.58'
L23	N30°26'45"E	1520.32'
L24	S69°59'43"W	54.62'
L25	N36°56'54"E	1334.42'
L26	S70°00'08"W	88.78'
L27	N70°59'04"E	829.59'
L28	S70°00'03"W	88.78'
L29	S89°26'56"E	784.91'
L30	S70°00'06"W	88.78'
L31	S69°42'34"E	837.12'
L32	S70°00'05"W	88.78'
L33	S42°43'14"E	1160.86'
L34	S70°00'02"W	88.77'
L35	S35°38'43"E	1372.40'
L36	S70°00'00"W	88.77'



UELS, LLC
Corporate Office * 85 South 200 East
Vernal, UT 84078 * (435) 789-1017

Caerus Oil & Gas LLC

NPR B16 596 PAD
NW 1/4 NE 1/4, SECTION 16, T5S, R96W, 6th P.M.
GARFIELD COUNTY, COLORADO

SURVEYED BY	BART HUNTING, D.P.	03-20-18	SCALE
DRAWN BY	T.S.	08-17-18	1" = 300'
TARGET BOTTOM HOLE DRAWING		FIGURE #6A	