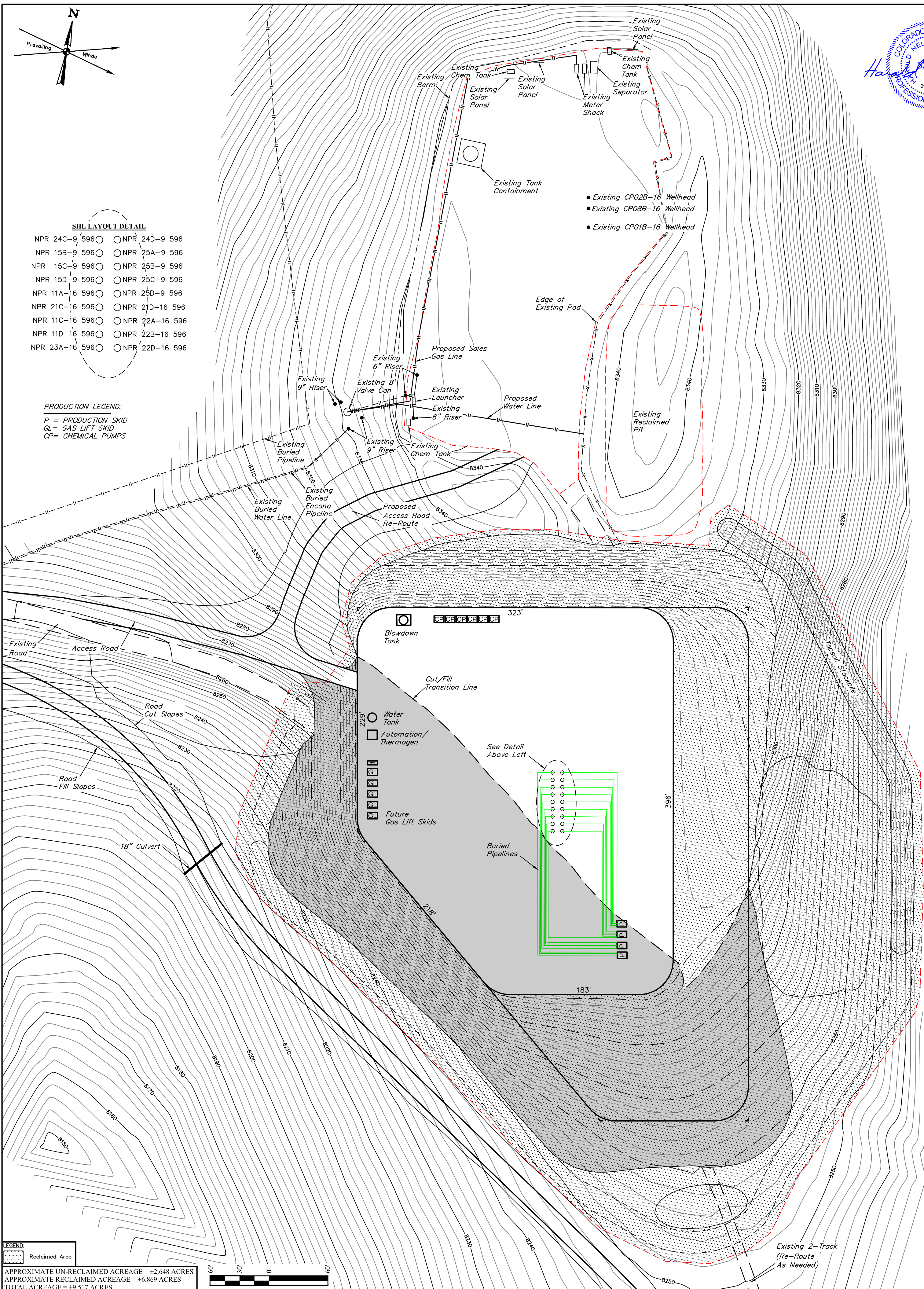


SHL LAYOUT DETAIL

- NPR 24C-9 596 ○ NPR 24D-9 596
NPR 15B-9 596 ○ NPR 25A-9 596
NPR 15C-9 596 ○ NPR 25B-9 596
NPR 15D-9 596 ○ NPR 25C-9 596
NPR 11A-16 596 ○ NPR 25D-9 596
NPR 21C-16 596 ○ NPR 21D-16 596
NPR 11C-16 596 ○ NPR 22A-16 596
NPR 11D-16 596 ○ NPR 22B-16 596
NPR 23A-16 596 ○ NPR 22D-16 596

PRODUCTION LEGEND:

- P = PRODUCTION SKID
GL = GAS LIFT SKID
CP = CHEMICAL PUMPS



APPROXIMATE UN-RECLAIMED ACREAGE = ±2.648 ACRES
APPROXIMATE RECLAIMED ACREAGE = ±6.869 ACRES
TOTAL ACREAGE = ±9.517 ACRES

NOTES:
• Contours shown at 2' intervals.

Caerus Oil & Gas LLC

NPR B16 596 PAD
NW 1/4 NE 1/4, SECTION 16, T5S, R96W, 6th P.M.
GARFIELD COUNTY, COLORADO

| | | | |
|--|--------------------|-----------|----------|
| SURVEYED BY | BART HUNTING, D.P. | 03-20-18 | SCALE |
| DRAWN BY | T.S. | 08-17-18 | 1" = 60' |
| INTERIM RECLAMATION/ PRODUCTION SCHEMATIC | | FIGURE #5 | |