

# **Crestone Peak Resources**

**DJ BASIN**

**S21-T2N-R68W**

**DREAM WEAVER North 3I-21H-N268**

**OH**

**PLAN #1**

## **Anticollision Summary Report**

**23 May, 2018**

# Cathedral Energy Services

## Anticollision Summary Report

<b>Company:</b>	Crestone Peak Resources	<b>Local Co-ordinate Reference:</b>	Well DREAM WEAVER North 3I-21H-N268 - Slot DREAM WEAVER North 3I-21H-N268 SHL
<b>Project:</b>	DJ BASIN	<b>TVD Reference:</b>	23' KB @ 4924.00usft (Original Well Elev)
<b>Reference Site:</b>	S21-T2N-R68W	<b>MD Reference:</b>	23' KB @ 4924.00usft (Original Well Elev)
<b>Site Error:</b>	0.00 usft	<b>North Reference:</b>	True
<b>Reference Well:</b>	DREAM WEAVER North 3I-21H-N268	<b>Survey Calculation Method:</b>	Minimum Curvature
<b>Well Error:</b>	0.00 usft	<b>Output errors are at</b>	2.00 sigma
<b>Reference Wellbore</b>	OH	<b>Database:</b>	USA EDM 5000 Multi Users DB
<b>Reference Design:</b>	PLAN #1	<b>Offset TVD Reference:</b>	Offset Datum

<b>Reference</b>	PLAN #1		
<b>Filter type:</b>	NO GLOBAL FILTER: Using user defined selection & filtering criteria		
<b>Interpolation Method:</b>	MD Interval 100.00usft	<b>Error Model:</b>	ISCWSA
<b>Depth Range:</b>	Unlimited	<b>Scan Method:</b>	Closest Approach 3D
<b>Results Limited by:</b>	Maximum center-center distance of 1,933.21 usft	<b>Error Surface:</b>	Pedal Curve
<b>Warning Levels Evaluated at:</b>	2.00 Sigma	<b>Casing Method:</b>	Not applied

<b>Survey Tool Program</b>	<b>Date</b>	5/23/2018		
<b>From (usft)</b>	<b>To (usft)</b>	<b>Survey (Wellbore)</b>	<b>Tool Name</b>	<b>Description</b>
0.00	200.00	PLAN #1 (OH)	VESSI_GYROFLEX	VESSI Gyroflex Gyro
2,001.00	19,633.61	PLAN #1 (OH)	MWD+HDGM	OWSG MWD + HDGM

Summary						
Site Name	Reference Measured Depth (usft)	Offset Measured Depth (usft)	Distance Between Centres (usft)	Distance Between Ellipses (usft)	Separation Factor	Warning
S21-T2N-R68W						
DREAM WEAVER North 3A-21H-N268 - OH - PLAN #1	200.00	200.00	97.14	96.65	198.119	CC, ES
DREAM WEAVER North 3A-21H-N268 - OH - PLAN #1	6,800.00	6,554.20	1,781.00	1,740.98	44.506	SF
DREAM WEAVER North 3B-21H-N268 - OH - PLAN #3	200.00	200.00	85.00	84.51	173.355	CC, ES
DREAM WEAVER North 3B-21H-N268 - OH - PLAN #3	19,633.61	19,884.15	1,620.18	1,234.41	4.200	SF
DREAM WEAVER North 3C-21H-N268 - OH - PLAN #2	200.00	200.00	72.86	72.37	148.590	CC, ES
DREAM WEAVER North 3C-21H-N268 - OH - PLAN #2	19,633.61	19,630.38	1,636.68	1,248.59	4.217	SF
DREAM WEAVER North 3D-21H-N268 - OH - PLAN #1	200.00	200.00	60.71	60.22	123.824	CC, ES
DREAM WEAVER North 3D-21H-N268 - OH - PLAN #1	19,633.61	19,570.00	1,224.05	841.19	3.197	SF
DREAM WEAVER North 3E-21H-N268 - OH - PLAN #1	200.00	200.00	48.57	48.08	99.060	CC, ES
DREAM WEAVER North 3E-21H-N268 - OH - PLAN #1	19,633.61	19,503.01	961.69	577.21	2.501	SF
DREAM WEAVER North 3F-21H-N268 - OH - PLAN #1	200.00	200.00	36.43	35.94	74.295	CC, ES
DREAM WEAVER North 3F-21H-N268 - OH - PLAN #1	19,633.61	19,757.66	919.79	535.45	2.393	SF
DREAM WEAVER North 3G-21H-N268 - OH - PLAN #1	200.00	200.00	24.29	23.80	49.529	CC, ES
DREAM WEAVER North 3G-21H-N268 - OH - PLAN #1	19,633.61	19,626.62	679.87	289.99	1.744	SF
DREAM WEAVER North 3H-21H-N268 - OH - PLAN #1	200.00	200.00	12.14	11.65	24.766	CC
DREAM WEAVER North 3H-21H-N268 - OH - PLAN #1	19,633.61	19,529.80	352.69	-25.79	0.932	Level 1, ES, SF
DREAM WEAVER North 3J-21H-N268 - OH - PLAN #1	507.54	506.27	11.86	10.28	7.473	CC
DREAM WEAVER North 3J-21H-N268 - OH - PLAN #1	19,000.00	19,143.30	243.61	-77.35	0.759	Level 1, SF
DREAM WEAVER North 3J-21H-N268 - OH - PLAN #1	19,100.00	19,243.18	247.52	-77.80	0.761	Level 1, ES
DREAM WEAVER North 3K-21H-N268 - OH - PLAN #1	200.00	200.00	24.29	23.80	49.529	CC
DREAM WEAVER North 3K-21H-N268 - OH - PLAN #1	19,000.00	18,923.27	305.33	-51.38	0.856	Level 1, ES, SF
DREAM WEAVER South 3A-21H-N268 - OH - PLAN #1	451.94	452.73	11.15	9.77	8.052	CC, ES, SF
DREAM WEAVER South 3B-21H-N268 - OH - PLAN #2	495.87	497.01	14.75	13.21	9.541	CC, ES
DREAM WEAVER South 3B-21H-N268 - OH - PLAN #2	500.00	500.97	14.80	13.23	9.467	SF
DREAM WEAVER South 3C-21H-N268 - OH - PLAN #1	529.55	530.60	25.00	23.33	14.981	CC, ES, SF
DREAM WEAVER South 3D-21H-N268 - OH - PLAN #1	606.71	607.84	20.81	18.87	10.747	CC, ES, SF
DREAM WEAVER South 3E-21H-N268 - OH - PLAN #1	931.26	927.69	15.58	12.52	5.090	CC, ES, SF
DREAM WEAVER South 3F-21H-N268 - OH - PLAN #1	763.78	764.66	31.06	28.56	12.445	CC, ES
DREAM WEAVER South 3F-21H-N268 - OH - PLAN #1	800.00	800.37	32.45	29.82	12.333	SF
DREAM WEAVER South 3G-21H-N268 - OH - PLAN #1	1,008.55	1,005.31	18.20	14.86	5.454	CC, ES, SF
DREAM WEAVER South 3H-21H-N268 - OH - PLAN #1	990.70	987.43	35.06	31.78	10.698	CC, ES
DREAM WEAVER South 3H-21H-N268 - OH - PLAN #1	7,469.09	8,146.90	213.09	169.01	4.834	SF
DREAM WEAVER South 3I-21H-N268 - OH - PLAN #2	960.14	955.77	60.11	56.94	18.933	CC, ES
DREAM WEAVER South 3I-21H-N268 - OH - PLAN #2	8,025.32	7,716.79	119.95	76.19	2.741	SF

CC - Min centre to center distance or convergent point, SF - min separation factor, ES - min ellipse separation

# Cathedral Energy Services

## Anticollision Summary Report

<b>Company:</b>	Crestone Peak Resources	<b>Local Co-ordinate Reference:</b>	Well DREAM WEAVER North 3I-21H-N268 - Slot DREAM WEAVER North 3I-21H-N268 SHL
<b>Project:</b>	DJ BASIN	<b>TVD Reference:</b>	23' KB @ 4924.00usft (Original Well Elev)
<b>Reference Site:</b>	S21-T2N-R68W	<b>MD Reference:</b>	23' KB @ 4924.00usft (Original Well Elev)
<b>Site Error:</b>	0.00 usft	<b>North Reference:</b>	True
<b>Reference Well:</b>	DREAM WEAVER North 3I-21H-N268	<b>Survey Calculation Method:</b>	Minimum Curvature
<b>Well Error:</b>	0.00 usft	<b>Output errors are at</b>	2.00 sigma
<b>Reference Wellbore</b>	OH	<b>Database:</b>	USA EDM 5000 Multi Users DB
<b>Reference Design:</b>	PLAN #1	<b>Offset TVD Reference:</b>	Offset Datum

Summary						
Site Name Offset Well - Wellbore - Design	Reference Measured Depth (usft)	Offset Measured Depth (usft)	Distance Between Centres (usft)	Distance Between Ellipses (usft)	Separation Factor	Warning
S21-T2N-R68W						
DREAM WEAVER South 3J-21H-N268 - OH - PLAN #2	929.52	924.39	80.73	77.65	26.276	CC, ES
DREAM WEAVER South 3J-21H-N268 - OH - PLAN #2	8,328.98	7,525.88	277.24	231.14	6.014	SF
DREAM WEAVER South 3K-21H-N268 - OH - PLAN #2	878.69	872.65	103.16	100.26	35.551	CC, ES
DREAM WEAVER South 3K-21H-N268 - OH - PLAN #2	8,200.00	7,483.05	500.22	456.43	11.422	SF

# Cathedral Energy Services

## Anticollision Summary Report

<b>Company:</b>	Crestone Peak Resources	<b>Local Co-ordinate Reference:</b>	Well DREAM WEAVER North 3I-21H-N268 - Slot DREAM WEAVER North 3I-21H-N268 SHL
<b>Project:</b>	DJ BASIN	<b>TVD Reference:</b>	23' KB @ 4924.00usft (Original Well Elev)
<b>Reference Site:</b>	S21-T2N-R68W	<b>MD Reference:</b>	23' KB @ 4924.00usft (Original Well Elev)
<b>Site Error:</b>	0.00 usft	<b>North Reference:</b>	True
<b>Reference Well:</b>	DREAM WEAVER North 3I-21H-N268	<b>Survey Calculation Method:</b>	Minimum Curvature
<b>Well Error:</b>	0.00 usft	<b>Output errors are at</b>	2.00 sigma
<b>Reference Wellbore</b>	OH	<b>Database:</b>	USA EDM 5000 Multi Users DB
<b>Reference Design:</b>	PLAN #1	<b>Offset TVD Reference:</b>	Offset Datum

### Summary

Site Name Offset Well - Wellbore - Design	Reference Measured Depth (usft)	Offset Measured Depth (usft)	Distance Between Centres (usft)	Distance Between Ellipses (usft)	Separation Factor	Warning
S21-T2N-R68W (OFFSETS)						
ARTHUR STROMQUIST 2 - KMG WELL - GYRO	10,161.14	7,374.18	1,674.87	1,614.01	27.521	CC
ARTHUR STROMQUIST 2 - KMG WELL - GYRO	10,200.00	7,375.24	1,675.32	1,613.95	27.298	ES
ARTHUR STROMQUIST 2 - KMG WELL - GYRO	10,500.00	7,383.56	1,708.78	1,644.20	26.460	SF
BLISS 41-21 - KPK WELL - SURVEYS						Out of range
BOULDER CREEK 9-4K8 - SNYDER OIL - NO SURVEY						Out of range
BROWN C UNIT 1 - CPR WELL - GYRO						Out of range
CANINO 1 - HUGHES C W-SOTEXCO 1 - NO SURVEY						Out of range
CHAMPLIN 41-4/1-68/ 1 - KMG WELL - NO SURVEYS						Out of range
CHAMPLIN 86 AMOCO B 2 - KPK WELL - NO SURVEY						Out of range
CHAMPLIN 86 AMOCO UT/Q 1 - KMG WELL - GYRO						Out of range
CHAMPLIN 86 AMOCO-B 1 - KPK WELL - NO SURVEY						Out of range
CHAMPLIN 86 AMOCO-B 3 - KPK WELL - NO SURVEY						Out of range
CHAMPLIN 86 AMOCO-B 4 - KPK WELL - NO SURVEY						Out of range
CHAMPLIN 86 AMOCO-B 5 - KPK WELL - NO SURVEY						Out of range
CHAMPLIN 86 AMOCO-B 6 - KPK WELL - NO SURVEY						Out of range
CHAMPLIN 86 AMOCO-F 5 - KPK WELL - NO SURVEY						Out of range
CHAMPLIN 86 AMOCO-O 9 - KMG WELL - GYRO						Out of range
CHAMPLIN32-4/1-68/ 2 - KMG WELL - NO SURVEYS						Out of range
CHMPLN 86 AMOCO-F 1 - KPK WELL - NO SURVEYS						Out of range
COLCLASURE 42-21 - KPK WELL - NO SURVEYS						Out of range
COOLEY 11-16 - KMG WELL - SURVEYS	14,154.99	7,622.30	242.13	107.94	1.804	CC, ES, SF
COOLEY 12-16 - KMG WELL - SURVEYS	14,118.46	7,561.03	1,558.13	1,426.86	11.869	CC, ES
COOLEY 12-16 - KMG WELL - SURVEYS	14,300.00	7,562.35	1,568.67	1,435.06	11.741	SF
COOLEY 13-16 - KMG WELL - SURVEYS	12,611.43	7,475.09	1,698.72	1,596.35	16.593	CC, ES
COOLEY 13-16 - KMG WELL - SURVEYS	12,800.00	7,476.26	1,707.03	1,602.91	16.395	SF
COOLEY 14-16 - KMG WELL - SURVEYS	12,666.89	7,543.15	121.76	18.40	1.178	Level 2, CC, ES, SF
COOLEY 22-16 - KMG WELL - SURVEYS	14,739.51	7,630.74	925.82	776.45	6.198	CC, ES
COOLEY 22-16 - KMG WELL - SURVEYS	14,800.00	7,631.05	927.79	778.10	6.198	SF
COOLEY 23-16 - KMG WELL - SURVEYS	13,458.07	7,599.81	358.64	242.13	3.078	CC, ES
COOLEY 23-16 - KMG WELL - SURVEYS	13,500.00	7,599.59	361.09	243.11	3.061	SF
COOLEY 35-16 - KMG WELL - SURVEYS	12,209.92	7,488.82	876.77	777.03	8.790	CC, ES
COOLEY 35-16 - KMG WELL - SURVEYS	12,300.00	7,489.85	881.39	780.65	8.749	SF
COPPER 31-15 - KMG WELL - SURVEYS						Out of range
CPC 31-4 (1-68) 3 - ANADARKO WELL - NO SURVEYS						Out of range
CPC 42-4 (1-68) 4 - ANADARKO WELL - NO SURVEYS						Out of range
DOMENICO 1 - NOBLE WELL - GYRO	19,633.61	7,352.40	1,718.27	1,628.15	19.068	CC, ES, SF
DUCKWORTH 31-16 - CPR WELL - GYRO	16,786.47	7,587.58	1,109.38	945.33	6.763	CC
DUCKWORTH 31-16 - CPR WELL - GYRO	16,800.00	7,587.97	1,109.46	945.19	6.754	ES
DUCKWORTH 31-16 - CPR WELL - GYRO	16,900.00	7,590.81	1,115.17	949.94	6.749	SF
DUCKWORTH 32-16 - CPR WELL - SURVEYS	15,314.97	7,517.14	1,099.72	954.94	7.595	CC, ES
DUCKWORTH 32-16 - CPR WELL - SURVEYS	15,400.00	7,517.72	1,103.01	956.55	7.531	SF
DUCKWORTH 33-16 - CPR WELL - SURVEYS	14,254.89	7,560.36	1,102.98	963.04	7.882	CC, ES
DUCKWORTH 33-16 - CPR WELL - SURVEYS	14,300.00	7,560.32	1,103.90	963.46	7.860	SF
DUCKWORTH 41-16 - CPR WELL - SURVEYS						Out of range
DUCKWORTH 43-16 - CPR WELL - GYRO						Out of range
DUCKWORTH 44-16 - CPR WELL - SURVEYS						Out of range
DUCKWORTH 6-0-16 - CPR WELL - SURVEYS	17,373.22	7,582.64	1,723.47	1,531.26	8.967	CC
DUCKWORTH 6-0-16 - CPR WELL - SURVEYS	17,400.00	7,582.94	1,723.68	1,531.07	8.949	ES
DUCKWORTH 6-0-16 - CPR WELL - SURVEYS	17,500.00	7,584.05	1,728.13	1,534.39	8.920	SF
DUCKWORTH B UNIT 1 - CPR WELL - GYRO						Out of range
DUCKWORTH B UNIT 2 - CPR WELL - GYRO	12,908.13	7,398.76	1,509.44	1,407.61	14.822	CC, ES

CC - Min centre to center distance or convergent point, SF - min separation factor, ES - min ellipse separation

# Cathedral Energy Services

## Anticollision Summary Report

<b>Company:</b>	Crestone Peak Resources	<b>Local Co-ordinate Reference:</b>	Well DREAM WEAVER North 3I-21H-N268 - Slot DREAM WEAVER North 3I-21H-N268 SHL
<b>Project:</b>	DJ BASIN	<b>TVD Reference:</b>	23' KB @ 4924.00usft (Original Well Elev)
<b>Reference Site:</b>	S21-T2N-R68W	<b>MD Reference:</b>	23' KB @ 4924.00usft (Original Well Elev)
<b>Site Error:</b>	0.00 usft	<b>North Reference:</b>	True
<b>Reference Well:</b>	DREAM WEAVER North 3I-21H-N268	<b>Survey Calculation Method:</b>	Minimum Curvature
<b>Well Error:</b>	0.00 usft	<b>Output errors are at</b>	2.00 sigma
<b>Reference Wellbore</b>	OH	<b>Database:</b>	USA EDM 5000 Multi Users DB
<b>Reference Design:</b>	PLAN #1	<b>Offset TVD Reference:</b>	Offset Datum

Summary						
Site Name Offset Well - Wellbore - Design	Reference Measured Depth (usft)	Offset Measured Depth (usft)	Distance Between Centres (usft)	Distance Between Ellipses (usft)	Separation Factor	Warning
S21-T2N-R68W (OFFSETS)						
DUCKWORTH B UNIT 2 - CPR WELL - GYRO	13,100.00	7,399.31	1,521.59	1,417.05	14.556	SF
EAST RINN 0-4-15 - CPR WELL - SURVEYS						Out of range
EAST RINN 13-15 - CPR WELL - SURVEYS						Out of range
EDITH ANN 1 - CPR WELL - GYRO						Out of range
EDITH ANN 33-21 - CPR WELL - GYRO	8,934.53	7,405.10	1,008.63	963.99	22.597	CC, ES
EDITH ANN 33-21 - CPR WELL - GYRO	9,100.00	7,405.88	1,022.11	975.63	21.991	SF
EDITH ANN 34-21 - CPR WELL - GYRO	7,548.32	7,329.34	923.37	889.81	27.520	CC, ES
EDITH ANN 34-21 - CPR WELL - GYRO	7,600.00	7,349.81	924.65	890.94	27.434	SF
EDITH ANN 4-21 - CPR WELL - SURVEYS	8,130.37	7,586.29	1,814.76	1,768.49	39.221	CC, ES
EDITH ANN 4-21 - CPR WELL - SURVEYS	8,400.00	7,588.08	1,834.68	1,787.41	38.817	SF
EDITH ANN 44-21 - CPR WELL - GYRO						Out of range
EDITH ANN 6-8-21 - CPR WELL - SURVEYS	6,957.89	7,069.61	1,717.33	1,679.50	45.402	CC, ES
EDITH ANN 6-8-21 - CPR WELL - SURVEYS	7,500.00	7,475.70	1,775.67	1,735.13	43.799	SF
EDITH ANN 8-8-21 - CPR WELL - SURVEYS						Out of range
EDITH ANN-DUCKWORTH 4A-21H-O268 - CPR - FINAL	15,906.73	16,106.70	552.91	264.53	1.917	CC
EDITH ANN-DUCKWORTH 4A-21H-O268 - CPR - FINAL	16,927.74	17,135.49	557.25	236.83	1.739	ES, SF
EDITH ANN-DUCKWORTH 4B-21H-O268 - CPR - FINAL	14,521.59	14,818.47	855.43	609.53	3.479	CC
EDITH ANN-DUCKWORTH 4B-21H-O268 - CPR - FINAL	16,939.47	17,237.97	895.93	569.74	2.747	ES, SF
EDITH ANN-DUCKWORTH 4C-21H-O268 - CPR - FINA	16,677.13	16,767.00	1,256.15	939.67	3.969	CC
EDITH ANN-DUCKWORTH 4C-21H-O268 - CPR - FINA	16,700.00	16,767.00	1,256.36	939.64	3.967	ES, SF
EDITH ANN-DUCKWORTH 4D-21H-O268 - CPR - FINA	13,851.80	14,107.97	1,569.17	1,345.25	7.008	CC
EDITH ANN-DUCKWORTH 4D-21H-O268 - CPR - FINA	16,931.19	17,188.00	1,579.44	1,253.34	4.843	ES
EDITH ANN-DUCKWORTH 4D-21H-O268 - CPR - FINA	17,000.00	17,188.00	1,580.94	1,254.00	4.836	SF
EDITH ANN-DUCKWORTH 4E-21H-O268 - CPR - FINAL	15,684.57	15,772.19	1,844.74	1,559.58	6.469	CC
EDITH ANN-DUCKWORTH 4E-21H-O268 - CPR - FINAL	15,800.00	15,827.61	1,846.74	1,558.75	6.413	ES
EDITH ANN-DUCKWORTH 4E-21H-O268 - CPR - FINAL	16,900.00	16,817.13	1,928.58	1,606.74	5.992	SF
EDITH ANN-DUCKWORTH 4F-21H-O268 - CPR - FINAL						Out of range
EDITH ANN-DUCKWORTH 4G-21H-O268 - CPR - FINA						Out of range
EDITH ANN-DUCKWORTH 4H-21H-O268 - CPR - FINA						Out of range
ERIE CORP 42-4 - KMG WELL - NO SURVEYS						Out of range
EVERIST 12-10 - KMG WELL - SURVEYS						Out of range
EVERIST 12-10X - KMG WELL - NO SURVEYS						Out of range
EVERIST 13-10 - KMG WELL - SURVEYS						Out of range
EVERIST 33-10 - KMG WELL - SURVEYS						Out of range
FAIRVIEW 1 - EXTRACTION WELL - NO SURVEYS						Out of range
FAIRVIEW 3 - EXTRACTION O&G LLC - SURVEYS						Out of range
FAIRVIEW 4 - EXTRACTION O&G LLC - SURVEYS						Out of range
FAIRVIEW 5 - EXTRACTION O&G LLC - SURVEYS						Out of range
FILE 1-17 - CPR WELL - SURVEYS						Out of range
FILE 31-17 - CPR WELL - SURVEYS						Out of range
FILE 32-17 - CPR WELL - SURVEYS						Out of range
FILE 41-17 - CPR WELL - SURVEYS						Out of range
FILE 42-17 - CPR WELL - NO SURVEYS						Out of range
FILE 4-2-17 - CPR WELL - SURVEYS						Out of range
FILE 42-17X - CPR WELL - SURVEYS						Out of range
FILE 6-0-17 - CPR WELL - SURVEYS						Out of range
FILE 8-2-17 - CPR WELL - SURVEYS						Out of range
FREDERICKS 13-27 - KMG WELL - NO SURVEYS						Out of range
FREDERICKS 13-27X - KMG WELL - SURVEYS						Out of range
GARVER U 34-5JI - KMG WELL - NO SURVEYS						Out of range
HINGLEY 1 - KPK WELL - NO SURVEYS						Out of range

CC - Min centre to center distance or convergent point, SF - min separation factor, ES - min ellipse separation

# Cathedral Energy Services

## Anticollision Summary Report

<b>Company:</b>	Crestone Peak Resources	<b>Local Co-ordinate Reference:</b>	Well DREAM WEAVER North 3I-21H-N268 - Slot DREAM WEAVER North 3I-21H-N268 SHL
<b>Project:</b>	DJ BASIN	<b>TVD Reference:</b>	23' KB @ 4924.00usft (Original Well Elev)
<b>Reference Site:</b>	S21-T2N-R68W	<b>MD Reference:</b>	23' KB @ 4924.00usft (Original Well Elev)
<b>Site Error:</b>	0.00 usft	<b>North Reference:</b>	True
<b>Reference Well:</b>	DREAM WEAVER North 3I-21H-N268	<b>Survey Calculation Method:</b>	Minimum Curvature
<b>Well Error:</b>	0.00 usft	<b>Output errors are at</b>	2.00 sigma
<b>Reference Wellbore</b>	OH	<b>Database:</b>	USA EDM 5000 Multi Users DB
<b>Reference Design:</b>	PLAN #1	<b>Offset TVD Reference:</b>	Offset Datum

Summary						
Site Name Offset Well - Wellbore - Design	Reference Measured Depth (usft)	Offset Measured Depth (usft)	Distance Between Centres (usft)	Distance Between Ellipses (usft)	Separation Factor	Warning
S21-T2N-R68W (OFFSETS)						
HINGLEY 2 - KPK WELL - NO SUREYS						Out of range
HSR-STROMQUIST 14-21 - KMG WELL - GYRO	0.00	0.00	268.15			
HSR-STROMQUIST 14-21 - KMG WELL - GYRO	8,000.00	7,400.95	672.03	636.31	18.812	SF
JACK A MLEYNEK 2 - KPK WELL - NO SURVEYS						Out of range
JACK MLEYNEK 1 - KPK WELL - NO SURVEYS						Out of range
JACK MLEYNEK 3 - KPK WELL - NO SURVEYS						Out of range
JACK MLEYNEK 4 - KPK WELL - NO SURVEYS						Out of range
JACK MLEYNEK 5 - KPK WELL - NO SURVEYS						Out of range
JILLSON 0-6-22 - CPR WELL - SURVEYS						Out of range
JILLSON 1 - KPK WELL - NO SURVEYS						Out of range
JILLSON 11-22 - CPR WELL - GYRO						Out of range
JILLSON 12-22 - CPR WELL - GYRO						Out of range
JILLSON 14-22 - CPR WELL - GYRO						Out of range
JILLSON 3 - KPK WELL - NO SURVEYS						Out of range
JILLSON 5 - KPK WELL - NO SURVEYS						Out of range
JILLSON A 1 - KPK WELL - NO SURVEYS	5,540.72	5,476.32	1,251.01	1,226.84	51.758	CC, ES, SF
JILLSON A 2 - KPK WELL - NO SURVEYS	200.00	175.99	1,721.70	1,721.15	3,127.970	CC
JILLSON A 2 - KPK WELL - NO SURVEYS	300.00	275.97	1,721.94	1,721.04	1,914.041	ES
JILLSON A 2 - KPK WELL - NO SURVEYS	5,100.00	5,039.11	1,926.53	1,905.16	90.134	SF
JILLSON A 3 - KPK WELL - NO SURVEYS						Out of range
JILLSON A 4 - KPK WELL - NO SURVEYS						Out of range
JILLSON-EAST RINN 3A-22H-M268 - CPR WELL - SUR						Out of range
JILLSON-EAST RINN 3B-22H-M268 - CPR WELL - SUR						Out of range
JILLSON-EAST RINN 3C-22H-M268 - CPR WELL - SUR						Out of range
KENNEDY 1 - MACEY & MERSHON WELL - NO SURVE						Out of range
KENNEDY 31-21 - CPR WELL - GYRO	11,491.97	7,447.18	977.21	896.73	12.142	CC
KENNEDY 31-21 - CPR WELL - GYRO	11,500.00	7,447.20	977.24	896.63	12.123	ES
KENNEDY 31-21 - CPR WELL - GYRO	11,600.00	7,414.83	983.18	901.40	12.021	SF
KENNEDY 32-21 - CPR WELL - GYRO	10,002.46	7,401.97	1,238.31	1,179.64	21.107	CC, ES
KENNEDY 32-21 - CPR WELL - GYRO	10,200.00	7,404.32	1,253.96	1,192.86	20.520	SF
KENNEDY 41-21 - CPR WELL - GYRO						Out of range
KENNEDY 4-2-21 - CPR WELL - SURVEYS	10,806.16	7,461.47	544.95	468.18	7.099	CC, ES
KENNEDY 4-2-21 - CPR WELL - SURVEYS	10,900.00	7,461.51	552.97	474.71	7.066	SF
KENNEDY 6-0-21 - CPR WELL - SURVEYS	12,105.95	7,478.25	1,710.03	1,614.58	17.917	CC, ES
KENNEDY 6-0-21 - CPR WELL - SURVEYS	12,400.00	7,487.04	1,735.10	1,635.20	17.369	SF
KENNEDY 6-4-21 - CPR WELL - SURVEYS	9,659.84	7,534.59	1,823.23	1,759.52	28.618	CC
KENNEDY 6-4-21 - CPR WELL - SURVEYS	9,700.00	7,535.10	1,823.67	1,759.33	28.342	ES
KENNEDY 6-4-21 - CPR WELL - SURVEYS	10,100.00	7,540.27	1,875.60	1,806.05	26.967	SF
KENNEDY 8-0-21 - CPR WELL - SURVEYS						Out of range
KENNEDY GAS UNIT 1 - CPR WELL - GYRO						Out of range
LONGMONT 8-10K - TOP OPERATING WELL - NO SUR						Out of range
LONGMONT FARMS 1 - KPK WELL - NO SURVEYS						Out of range
LONGMONT FARMS 3 - KPK WELL - NO SURVEYS						Out of range
MAX SERAFINI 1 - KPK WELL - NO SURVEYS						Out of range
MAX SERAFINI C 1 - KPK WELL - NO SURVEYS						Out of range
MILES 1 - KPK WELL - NO SURVEYS						Out of range
MILES 33-3M - KMG WELL - GYRO						Out of range
MILES 4 - KPK WELL - NO SURVEYS						Out of range
MILES 5 - KPK WELL - NO SURVEYS						Out of range
MILES JOSEPHINE 1 - KPK WELL - NO SURVEYS						Out of range
MILES JOSEPHINE 2 - KPK WELL - NO SURVEYS						Out of range

CC - Min centre to center distance or convergent point, SF - min separation factor, ES - min ellipse separation



# Cathedral Energy Services

## Anticollision Summary Report

<b>Company:</b>	Crestone Peak Resources	<b>Local Co-ordinate Reference:</b>	Well DREAM WEAVER North 3I-21H-N268 - Slot DREAM WEAVER North 3I-21H-N268 SHL
<b>Project:</b>	DJ BASIN	<b>TVD Reference:</b>	23' KB @ 4924.00usft (Original Well Elev)
<b>Reference Site:</b>	S21-T2N-R68W	<b>MD Reference:</b>	23' KB @ 4924.00usft (Original Well Elev)
<b>Site Error:</b>	0.00 usft	<b>North Reference:</b>	True
<b>Reference Well:</b>	DREAM WEAVER North 3I-21H-N268	<b>Survey Calculation Method:</b>	Minimum Curvature
<b>Well Error:</b>	0.00 usft	<b>Output errors are at</b>	2.00 sigma
<b>Reference Wellbore</b>	OH	<b>Database:</b>	USA EDM 5000 Multi Users DB
<b>Reference Design:</b>	PLAN #1	<b>Offset TVD Reference:</b>	Offset Datum

Summary						
Site Name Offset Well - Wellbore - Design	Reference Measured Depth (usft)	Offset Measured Depth (usft)	Distance Between Centres (usft)	Distance Between Ellipses (usft)	Separation Factor	Warning
S21-T2N-R68W (OFFSETS)						
MILES JOSEPHINE B 1 - KPK WELL - NO SURVEYS						Out of range
MILLER 12-27 - CPR WELL - GYRO						Out of range
MILTON NELSON 1 - KPK WELL - NO SURVEYS	200.00	181.00	893.78	893.26	1,694.745	CC, ES
MILTON NELSON 1 - KPK WELL - NO SURVEYS	5,200.00	4,960.00	1,465.53	1,442.17	62.731	SF
MILTON NELSON UN-C 1 - KPK WELL - NO SURVEYS	565.69	550.74	1,102.06	1,100.06	550.423	CC
MILTON NELSON UN-C 1 - KPK WELL - NO SURVEYS	800.00	783.16	1,102.46	1,099.52	374.324	ES
MILTON NELSON UN-C 1 - KPK WELL - NO SURVEYS	5,500.00	5,227.00	1,245.06	1,218.89	47.586	SF
MILTON NELSON UNIT 1 - KPK WELL - NO SURVEYS	4,166.46	4,121.00	27.39	8.95	1.485	Level 3, CC, ES, SF
MLEYNEK 28-10M - KMG WELL - GYRO						Out of range
MLEYNEK U 28-10JI - KMG WELL - GYRO						Out of range
MLEYNEK U 28-15JI - KMG WELL - GYRO						Out of range
MORGAN-A 4 - KPK WELL - NO SURVEYS						Out of range
NELSON 42-33 /2-68/ 2 - ANADARKO WELL - NO SURV						Out of range
NELSON DUANE E 41-33 (2-68) 1 - CHAMPLIN PETRO						Out of range
NELSON DUANE E 41-33 (2-68) 1-X - KMG WELL - NO						Out of range
NELSON E UNIT 2 - CPR WELL - GYRO						Out of range
NELSON MILTON H 'D' 1 - KMG WELL - GYRO						Out of range
NELSON MILTON H 'M' 1 - KMG WELL - GYRO						Out of range
NELSON MILTON-F 1 - KPK WELL - NO SURVEYS						Out of range
NORTH RINN 0-4-9 - CPR WELL - SURVEYS						Out of range
NORTH RINN 0-6-9 - CPR WELL - SURVEYS						Out of range
NORTH RINN 0-8-9 - CPR WELL - SURVEYS						Out of range
NORTH RINN 13-9 - CPR WELL - SURVEYS	19,633.61	7,471.74	1,415.34	1,200.96	6.602	CC, ES, SF
NORTH RINN 14-9 - CPR WELL - SURVEYS	18,021.35	7,423.56	1,545.65	1,358.56	8.262	CC, ES
NORTH RINN 14-9 - CPR WELL - SURVEYS	18,100.00	7,423.19	1,547.65	1,359.91	8.244	SF
NORTH RINN 24-9 - CPR WELL - SURVEYS	18,131.89	7,473.31	193.03	4.19	1.022	Level 2, CC, ES, SF
NORTH RINN 2-4-9 - CPR WELL - SURVEYS	19,633.61	7,564.60	805.10	600.17	3.929	CC, ES, SF
NORTH RINN 2-6-9 - CPR WELL - SURVEYS	18,668.97	7,364.90	1,121.40	926.76	5.762	CC, ES
NORTH RINN 2-6-9 - CPR WELL - SURVEYS	18,700.00	7,365.19	1,121.82	926.86	5.754	SF
OSKARSON 1 - HRM RES II LLC - NO SURVEYS						Out of range
OSKARSON 2 - ENERVEST OP - NO SURVEYS						Out of range
OSKARSON 24-33 - CPR WELL - GYRO						Out of range
OSKARSON 2-8-33 - CPR WELL - SURVEYS						Out of range
OSKARSON 3 - HRM RES II LLC - NO SURVEYS						Out of range
OSKARSON-E 1 - CPR WELL - GYRO						Out of range
OSKARSON-E 2 - CPR WELL - NO SURVEYS						Out of range
RASMUSSEN 3 - PETERSON ENERGY - GYRO						Out of range
RASMUSSEN 1 - PETERSON - GYRO	5,118.81	4,967.00	1,191.59	1,170.97	57.784	CC, ES
RASMUSSEN 1 - PETERSON - GYRO	5,200.00	4,967.00	1,194.36	1,173.52	57.332	SF
RASMUSSEN 11-28 - CPR WELL - SURVEYS	6,700.00	6,937.20	1,610.85	1,557.15	29.997	CC, ES
RASMUSSEN 11-28 - CPR WELL - SURVEYS	6,800.00	7,028.77	1,617.87	1,563.77	29.902	SF
RASMUSSEN 12-28 - CPR WELL - SURVEYS						Out of range
RASMUSSEN 2 - PETERSON ENERGY - NO SURVEYS	5,213.48	5,003.00	1,731.34	1,707.38	72.278	CC, ES
RASMUSSEN 2 - PETERSON ENERGY - NO SURVEYS	5,600.00	5,003.00	1,773.96	1,748.56	69.842	SF
RASMUSSEN 21-28 - CPR WELL - GYRO	6,736.12	6,690.51	1,006.62	976.88	33.850	CC, ES
RASMUSSEN 21-28 - CPR WELL - GYRO	6,800.00	6,753.17	1,009.38	979.32	33.583	SF
RASMUSSEN 22-28 - CPR WELL - GYRO						Out of range
RASMUSSEN 2-4-28 - CPR WELL - SURVEYS						Out of range
RASMUSSEN 31-28 - CPR WELL - GYRO	6,745.54	6,691.86	1,415.59	1,385.68	47.314	CC, ES
RASMUSSEN 31-28 - CPR WELL - GYRO	6,900.00	6,852.40	1,425.43	1,394.84	46.607	SF
RASMUSSEN 32-28 32-28 - CPR WELL - GYRO						Out of range

CC - Min centre to center distance or convergent point, SF - min separation factor, ES - min ellipse separation

# Cathedral Energy Services

## Anticollision Summary Report

<b>Company:</b>	Crestone Peak Resources	<b>Local Co-ordinate Reference:</b>	Well DREAM WEAVER North 3I-21H-N268 - Slot DREAM WEAVER North 3I-21H-N268 SHL
<b>Project:</b>	DJ BASIN	<b>TVD Reference:</b>	23' KB @ 4924.00usft (Original Well Elev)
<b>Reference Site:</b>	S21-T2N-R68W	<b>MD Reference:</b>	23' KB @ 4924.00usft (Original Well Elev)
<b>Site Error:</b>	0.00 usft	<b>North Reference:</b>	True
<b>Reference Well:</b>	DREAM WEAVER North 3I-21H-N268	<b>Survey Calculation Method:</b>	Minimum Curvature
<b>Well Error:</b>	0.00 usft	<b>Output errors are at</b>	2.00 sigma
<b>Reference Wellbore</b>	OH	<b>Database:</b>	USA EDM 5000 Multi Users DB
<b>Reference Design:</b>	PLAN #1	<b>Offset TVD Reference:</b>	Offset Datum

Summary						
Site Name Offset Well - Wellbore - Design	Reference Measured Depth (usft)	Offset Measured Depth (usft)	Distance Between Centres (usft)	Distance Between Ellipses (usft)	Separation Factor	Warning
S21-T2N-R68W (OFFSETS)						
RASMUSSEN 4-0-28 - CPR WELL - SURVEYS	6,788.40	7,196.73	635.76	578.37	11.079	CC, ES
RASMUSSEN 4-0-28 - CPR WELL - SURVEYS	6,800.00	7,209.18	635.80	578.38	11.072	SF
RASMUSSEN 41-28 - CPR WELL - GYRO						Out of range
RASMUSSEN 42-28 - CPR WELL - SURVEYS						Out of range
RASMUSSEN 4-2-28 - CPR WELL - SURVEYS	6,751.32	6,858.37	1,724.60	1,683.75	42.223	CC, ES
RASMUSSEN 4-2-28 - CPR WELL - SURVEYS	6,900.00	7,005.47	1,739.09	1,697.72	42.036	SF
RASMUSSEN 4-4-28 - CPR WELL - SURVEYS						Out of range
RASMUSSEN 44-29 - KPK WELL - NO SURVEYS						Out of range
RASMUSSEN 4-A - PETERSON ENERGY - GYRO	5,104.49	4,960.00	1,804.54	1,783.18	84.495	CC, ES
RASMUSSEN 4-A - PETERSON ENERGY - GYRO	5,500.00	4,960.00	1,847.37	1,824.83	81.944	SF
RASMUSSEN C" 2" - CPR WELL - GYRO						Out of range
RASMUSSEN-C-UNIT 1 - CPR WELL - GYRO						Out of range
RODGERS 1 - KPK WELL - NO SURVEYS						Out of range
SAUNDERS TRUST 8-2K8 - EXTRACTION WELL - NO						Out of range
SCHLAGEL 2 - EXTRACTION WELL - NO SURVEYS						Out of range
SERAFINI E MAX GU 1 - KMG WELL - GYRO	13,070.20	7,438.37	1,139.98	1,035.63	10.925	CC, ES
SERAFINI E MAX GU 1 - KMG WELL - GYRO	13,200.00	7,443.74	1,147.33	1,041.91	10.883	SF
SERAFINI-B 2 - KPK WELL - NO SURVEYS						Out of range
SHAW 1 - KPK WELL - NO SURVEYS						Out of range
SHAW 15-20 - KPK - SURVEYS						Out of range
SHAW 16-20 - KPK - SURVEYS						Out of range
STROMQUIST 1 - KPK WELL - NO SURVEYS						Out of range
STROMQUIST 11-21 - KMG WELL - GYRO	8,810.09	7,403.09	75.40	32.31	1.750	CC, ES, SF
STROMQUIST 13-21 - KMG WELL - GYRO	3,498.39	3,474.45	995.82	982.96	77.404	CC
STROMQUIST 13-21 - KMG WELL - GYRO	3,600.00	3,573.10	996.05	982.66	74.381	ES
STROMQUIST 13-21 - KMG WELL - GYRO	7,500.00	7,345.29	1,259.38	1,225.97	37.693	SF
STROMQUIST 22-21 - KMG WELL - SURVEYS	9,332.35	7,502.31	844.75	790.22	15.491	CC, ES
STROMQUIST 22-21 - KMG WELL - SURVEYS	9,500.00	7,509.64	861.20	804.03	15.064	SF
STROMQUIST 23-21 - KMG WELL - SURVEYS	2,829.32	2,793.30	190.84	180.33	18.162	CC, ES
STROMQUIST 23-21 - KMG WELL - SURVEYS	8,000.00	7,438.17	252.62	215.20	6.751	SF
STROMQUIST 34-21 - KMG WELL - SURVEYS	100.00	88.93	1,100.92	1,100.69	4,705.062	CC
STROMQUIST 34-21 - KMG WELL - SURVEYS	700.00	677.65	1,101.07	1,098.45	420.169	ES
STROMQUIST 34-21 - KMG WELL - SURVEYS	5,200.00	4,897.25	1,927.68	1,901.87	74.699	SF
STROMQUIST 35-21 - KMG WELL - SURVEYS	1,863.98	1,805.29	364.10	356.80	49.914	CC
STROMQUIST 35-21 - KMG WELL - SURVEYS	1,900.00	1,839.12	364.26	356.79	48.785	ES
STROMQUIST 35-21 - KMG WELL - SURVEYS	6,800.00	6,833.63	790.69	755.19	22.272	SF
TRAVELERS 28-11M - KMG WELL - GYRO						Out of range
TRAVELERS U 28-13DI - KMG WELL - GYRO						Out of range
UPRC 33-1M - KMG WELL - GYRO						Out of range
UPRR 43 PAN AM-B 7 - KPK WELL - NO SURVEYS						Out of range
WESTERN 3-21A - KMG WELL - GYRO	11,367.72	7,375.76	251.31	172.80	3.201	CC, ES, SF
WILDFLOWER 12-27 - KMG WELL - SURVEYS						Out of range
WILDFLOWER 33-27 - KMG WELL - SURVEYS						Out of range
WOOLEY UNIT 1 - KPK WELL - NO SURVEYS						Out of range

CC - Min centre to center distance or convergent point, SF - min separation factor, ES - min ellipse separation



# Cathedral Energy Services

## Anticollision Summary Report

<b>Company:</b>	Crestone Peak Resources	<b>Local Co-ordinate Reference:</b>	Well DREAM WEAVER North 3I-21H-N268 - Slot DREAM WEAVER North 3I-21H-N268 SHL
<b>Project:</b>	DJ BASIN	<b>TVD Reference:</b>	23' KB @ 4924.00usft (Original Well Elev)
<b>Reference Site:</b>	S21-T2N-R68W	<b>MD Reference:</b>	23' KB @ 4924.00usft (Original Well Elev)
<b>Site Error:</b>	0.00 usft	<b>North Reference:</b>	True
<b>Reference Well:</b>	DREAM WEAVER North 3I-21H-N268	<b>Survey Calculation Method:</b>	Minimum Curvature
<b>Well Error:</b>	0.00 usft	<b>Output errors are at</b>	2.00 sigma
<b>Reference Wellbore</b>	OH	<b>Database:</b>	USA EDM 5000 Multi Users DB
<b>Reference Design:</b>	PLAN #1	<b>Offset TVD Reference:</b>	Offset Datum

Summary						
Site Name	Reference Measured Depth (usft)	Offset Measured Depth (usft)	Distance Between Centres (usft)	Distance Between Ellipses (usft)	Separation Factor	Warning
<b>Offset Well - Wellbore - Design</b>						
S32-T2N-R68W						
Anderson 22-32 - KPK WELL - NO SURVEYS						Out of range
Anderson 32-32 - CPR WELL - SURVEYS						Out of range
Anderson 41-32 - CPR - GYRO						Out of range
Anderson 4-2-32 - CPR WELL - SURVEYS						Out of range
Anderson 6-4-32 - CPR WELL - SURVEYS						Out of range
Anderson Trust 1 - KPK - NO SURVEYS						Out of range
Anderson Trust 1 A - CPR WELL - GYRO						Out of range
Anderson Trust 2-A - CPR WELL - NO SURVEYS						Out of range
Anderson Trust 32-2 - CPR WELL - GYRO						Out of range
Anderson Trust 32-8 - CPR WELL - GYRO						Out of range
Anderson Trust C 1 - CPR WELL - SURVEYS						Out of range
Anderson Trust C Unit 2 - CPR WELL - GYRO						Out of range
Brown 22-5 - CPR WELL - GYRO						Out of range
Brown 31-5 - CPR WELL - SURVEYS						Out of range
Brown 41-5 - CPR WELL - SURVEYS						Out of range
Brown 5-3 - CPR WELL - GYRO						Out of range
Brown 5-5 - CPR WELL - GYRO						Out of range
Brown C Unit 1 - CPR WELL - GYRO						Out of range
Brown C Unit 2 - CPR WELL - GYRO						Out of range
Bryant 10-30 - KMG WELL - SURVEYS						Out of range
Bryant 16-30 - KMG WELL - SURVEYS						Out of range
Bryant 20-30 - KMG WELL - SURVEYS						Out of range
Bryant 23-30 - KMG WELL - SURVEYS						Out of range
Bryant 24-30 - KMG WELL - SURVEYS						Out of range
Bryant 33-29 - KMG WELL - SURVEYS						Out of range
Bryant 36-30 - KMG WELL - SURVEYS						Out of range
Bryant 8-30 - KMG WELL - SURVEYS						Out of range
Bryant Federal 37-30 - KMG WELL - SURVEYS						Out of range
Bulthaup 1-6 - KMG WELL - GYRO						Out of range
Bulthaup 16-6 - KMG WELL - SURVEYS						Out of range
Bulthaup 17-6 - KMG WELL - SURVEYS						Out of range
Bulthaup 24-6 - KMG WELL - SURVEYS						Out of range
Bulthaup 27-6 - KMG WELL - SURVEYS						Out of range
Bulthaup 39-6 - KMG WELL - SURVEYS						Out of range
Bulthaup 40-6 - KMG WELL - SURVEYS						Out of range
Bulthaup 8-6 - KMG WELL - GYRO						Out of range
Bulthaup 9-6 - KMG WELL - SURVEYS						Out of range
Canino 1-X - HUGHES CW - NO SURVEYS						Out of range
Champlin 86 Amoco F 6 - KPK - NO SURVEYS						Out of range
Champlin 86 N 1 - KMG WELL - GYRO						Out of range
Champlin Amoco 86 F 7 - KPK WELL - SURVEYS						Out of range
Cinque 1 - FOUNDATION WELL - NO SURVEYS						Out of range
Cinque 2 - FOUNDATION WELL - NO SURVEYS						Out of range
Cinque 4 - FOUNDATION WELL - NO SURVEYS						Out of range
FILE 3A-32H-K268 - OH - FINAL						Out of range
FILE 3B-32H-K268 - OH - FINAL						Out of range
FILE 3C-32H-K268 - OH - FINAL						Out of range
FILE 3D-32H-K268 - OH - FINAL						Out of range
FILE 3E-32H-K268 - OH - FINAL						Out of range
FILE 3F-32H-K268 - OH - FINAL						Out of range
FILE 3G-32H-K268 - OH - FINAL						Out of range

CC - Min centre to center distance or convergent point, SF - min separation factor, ES - min ellipse separation

# Cathedral Energy Services

## Anticollision Summary Report

<b>Company:</b>	Crestone Peak Resources	<b>Local Co-ordinate Reference:</b>	Well DREAM WEAVER North 3I-21H-N268 - Slot DREAM WEAVER North 3I-21H-N268 SHL
<b>Project:</b>	DJ BASIN	<b>TVD Reference:</b>	23' KB @ 4924.00usft (Original Well Elev)
<b>Reference Site:</b>	S21-T2N-R68W	<b>MD Reference:</b>	23' KB @ 4924.00usft (Original Well Elev)
<b>Site Error:</b>	0.00 usft	<b>North Reference:</b>	True
<b>Reference Well:</b>	DREAM WEAVER North 3I-21H-N268	<b>Survey Calculation Method:</b>	Minimum Curvature
<b>Well Error:</b>	0.00 usft	<b>Output errors are at</b>	2.00 sigma
<b>Reference Wellbore</b>	OH	<b>Database:</b>	USA EDM 5000 Multi Users DB
<b>Reference Design:</b>	PLAN #1	<b>Offset TVD Reference:</b>	Offset Datum

Summary						
Site Name	Reference Measured Depth (usft)	Offset Measured Depth (usft)	Distance Between Centres (usft)	Distance Between Ellipses (usft)	Separation Factor	Warning
<b>Offset Well - Wellbore - Design</b>						
S32-T2N-R68W						
FILE 3H-32H-K268 - OH - FINAL						Out of range
FILE 3Q-32H-K268 - OH - FINAL						Out of range
FILE 3R-32H-K268 - OH - FINAL						Out of range
FILE 3S-32H-K268 - OH - FINAL						Out of range
FILE 3T-32H-K268 - OH - FINAL						Out of range
FILE FED 3I-32H-K268 - OH - FINAL						Out of range
FILE FED 3J-32H-K268 - OH - FINAL						Out of range
FILE FED 3K-32H-K268 - OH - FINAL						Out of range
FILE FED 3K-32H-K268 - OH - PLAN #4						Out of range
FILE FED 3L-32H-K268 - OH - FINAL						Out of range
FILE FED 3M-32H-K268 - OH - FINAL						Out of range
FILE FED 3N-32H-K268 - OH - FINAL						Out of range
FILE FED 3O-32H-K268 - OH - FINAL						Out of range
FILE FED 3P-32H-K268 - OH - FINAL						Out of range
Foster 33-5 - CPR WELL - SURVEYS						Out of range
Foster 43-5 - CPR WELL - SURVEYS						Out of range
Foster 4-5 - CPR WELL - SURVEYS						Out of range
Foster 4-6-5 - CPR WELL - SURVEYS						Out of range
Foster 6-4-5 - CPR - SURVEYS						Out of range
Foster 6-4-5X - CPR WELL - SURVEYS						Out of range
Foster 6-8-5 - CPR WELL - SURVEYS						Out of range
Foster 8-8-5 - CPR WELL - SURVEYS						Out of range
Foster E Unit 1 - CPR - GYRO						Out of range
Gene 11-5 - KERR-MCGEE - GYRO						Out of range
Hankins 1 - KPK WELL - NO SURVEYS						Out of range
Hauck 17-29 - KMG WELL - SURVEYS						Out of range
Hauck 24-29 - KMG WELL - SURVEYS						Out of range
Hauck 7-29 - KMG WELL - SURVEYS						Out of range
HSR-Bryant 9-30A - KMG WELL - GYRO						Out of range
HSR-Williams 10-20 - KMG WELL - GYRO						Out of range
HWY52 4A-32H-O268 - OH - FINAL						Out of range
HWY52 4B-32H-O268 - OH - FINAL						Out of range
HWY52 4C-32H-O268 - OH - FINAL						Out of range
HWY52 4D-32H-O268 - OH - FINAL						Out of range
HWY52 4E-32H-O268 - OH - FINAL						Out of range
HWY52 4F-32H-O268 - OH - FINAL						Out of range
HWY52 4G-32H-O268 - OH - FINAL						Out of range
HWY52 4H-32H-O268 - OH - FINAL						Out of range
HWY52 4I-32H-O268 - OH - FINAL						Out of range
HWY52 4J-32H-O268 - OH - FINAL						Out of range
HWY52 4K-32H-O268 - OH - FINAL						Out of range
HWY52 4L-32H-O268 - OH - FINAL						Out of range
HWY52 4M-32H-O268 - OH - FINAL						Out of range
HWY52 4N-32H-O268 - OH - FINAL						Out of range
HWY52 4O-32H-O268 - OH - FINAL						Out of range
HWY52 4P-32H-O268 - OH - FINAL						Out of range
HWY52 4Q-32H-O268 - OH - FINAL						Out of range
HWY52 4R-32H-O268 - OH - FINAL						Out of range
HWY52 4S-32H-O268 - OH - FINAL						Out of range
HWY52 4T-32H-O268 - OH - FINAL						Out of range
HWY52 4U-32H-O268 - OH - FINAL						Out of range

CC - Min centre to center distance or convergent point, SF - min separation factor, ES - min ellipse separation

# Cathedral Energy Services

## Anticollision Summary Report

<b>Company:</b>	Crestone Peak Resources	<b>Local Co-ordinate Reference:</b>	Well DREAM WEAVER North 3I-21H-N268 - Slot DREAM WEAVER North 3I-21H-N268 SHL
<b>Project:</b>	DJ BASIN	<b>TVD Reference:</b>	23' KB @ 4924.00usft (Original Well Elev)
<b>Reference Site:</b>	S21-T2N-R68W	<b>MD Reference:</b>	23' KB @ 4924.00usft (Original Well Elev)
<b>Site Error:</b>	0.00 usft	<b>North Reference:</b>	True
<b>Reference Well:</b>	DREAM WEAVER North 3I-21H-N268	<b>Survey Calculation Method:</b>	Minimum Curvature
<b>Well Error:</b>	0.00 usft	<b>Output errors are at</b>	2.00 sigma
<b>Reference Wellbore</b>	OH	<b>Database:</b>	USA EDM 5000 Multi Users DB
<b>Reference Design:</b>	PLAN #1	<b>Offset TVD Reference:</b>	Offset Datum

### Summary

Site Name Offset Well - Wellbore - Design	Reference Measured Depth (usft)	Offset Measured Depth (usft)	Distance Between Centres (usft)	Distance Between Ellipses (usft)	Separation Factor	Warning
S32-T2N-R68W						
HWY52 4V-32H-O268 - OH - FINAL						Out of range
HWY52 4W-32H-O268 - OH - FINAL						Out of range
Jack Hein Unit 1 - HS RESOURCES WELL - NO SURVE						Out of range
John Lamar 1 - KPK WELL - NO SURVEYS						Out of range
Johnson 32-30 - KPK WELL - NO SURVEYS						Out of range
Johnson 7-30A - KMG WELL - GYRO						Out of range
Kenneth Koch 1 - KPK WELL - NO SURVEYS						Out of range
Kenyon 34-19 - CPR WELL - SURVEYS						Out of range
Kenyon 4-8-19 - CPR WELL - SURVEYS						Out of range
Kenyon 8-4-19 - CPR WELL - SURVEYS						Out of range
Kenyon 8-6-19 - CPR WELL - SURVEYS						Out of range
Kenyon 8-8-19 - CPR WELL - SURVEYS						Out of range
Koch 41-6 - KPK WELL - NO SURVEYS						Out of range
Koch Kenneth E A-1 - KMG WELL - SURVEY						Out of range
Milton H Nelson H-1 - KMG WELL - GYRO						Out of range
Milton H Nelson I1 - KMG WELL - GYRO						Out of range
Milton H Nelson L1 - KMG WELL - GYRO						Out of range
Milton Nelson K1 - KMG WELL - GYRO						Out of range
Nelson 1 - TEXAS TEA - NO SURVEYS						Out of range
Nelson 1-A - TEXAS TEA WELL - NO SURVEYS						Out of range
Nelson 2 - TEXAS TEA WELL - NO SURVEYS						Out of range
Nelson 3 - TEXAS TEA WELL - NO SURVEYS						Out of range
Nelson 4 - TEXAS TEA WELL - NO SURVEYS						Out of range
Nelson 5 - TEXAS TEA WELL - NO SURVEYS						Out of range
Nelson D2 - KPK WELL - NO SURVEYS						Out of range
Nelson E Unit 1 - CPR WELL - GYRO						Out of range
Nelson E Unit 2 - CPR WELL - GYRO						Out of range
NOAA Federal 11-32 - CPR WELL - GYRO						Out of range
Osarkson 2-8-33 - CPR WELL - SURVEYS						Out of range
Oskarson 13-33 - CPR - GYRO						Out of range
Oskarson 23-33 - CPR WELL - GYRO						Out of range
Oskarson 4 - HRM - NO SURVEYS						Out of range
Oskarson 4-4-33 - CPR WELL - SURVEYS						Out of range
Oskarson 4-6-33 - CPR WELL - SURVEYS						Out of range
Oskarson 4-8-33 - CPR WELL - SURVEYS						Out of range
Oskarson E Unit 1 - CPR WELL - GYRO						Out of range
Paquette 13-5 - KMG WELL - GYRO						Out of range
Paquette 14-5 - KERR-MCGEE - GYRO						Out of range
Rasmussen 10-29 - KMG WELL - SURVEYS						Out of range
Rasmussen 14-29 - KMG WELL - SURVEYS						Out of range
Rasmussen 16-29 - KMG WELL - SURVEYS						Out of range
Rasmussen 19-29 - KMG WELL - SURVEYS						Out of range
Rasmussen 20-29 - KMG WELL - SURVEYS						Out of range
Rasmussen 22-29 - KMG WELL - SURVEYS						Out of range
Rasmussen 23-29 - KMG WELL - SURVEYS						Out of range
Rasmussen 25-29 - KMG WELL - SURVEYS						Out of range
Rasmussen 36-29 - KMG WELL - SURVEYS						Out of range
Rasmussen 37-29 - KMG WELL - SURVEYS						Out of range
Rasmussen 39-29 - KMG WELL - SURVEYS						Out of range
Rasmussen Fed 35-29 - KMG WELL - SURVEYS						Out of range
Ray Nelson 0-4-32 - CPR WELL - SURVEYS						Out of range

CC - Min centre to center distance or convergent point, SF - min separation factor, ES - min ellipse separation

# Cathedral Energy Services

## Anticollision Summary Report

<b>Company:</b>	Crestone Peak Resources	<b>Local Co-ordinate Reference:</b>	Well DREAM WEAVER North 3I-21H-N268 - Slot DREAM WEAVER North 3I-21H-N268 SHL
<b>Project:</b>	DJ BASIN	<b>TVD Reference:</b>	23' KB @ 4924.00usft (Original Well Elev)
<b>Reference Site:</b>	S21-T2N-R68W	<b>MD Reference:</b>	23' KB @ 4924.00usft (Original Well Elev)
<b>Site Error:</b>	0.00 usft	<b>North Reference:</b>	True
<b>Reference Well:</b>	DREAM WEAVER North 3I-21H-N268	<b>Survey Calculation Method:</b>	Minimum Curvature
<b>Well Error:</b>	0.00 usft	<b>Output errors are at</b>	2.00 sigma
<b>Reference Wellbore</b>	OH	<b>Database:</b>	USA EDM 5000 Multi Users DB
<b>Reference Design:</b>	PLAN #1	<b>Offset TVD Reference:</b>	Offset Datum

### Summary

Site Name Offset Well - Wellbore - Design	Reference Measured Depth (usft)	Offset Measured Depth (usft)	Distance Between Centres (usft)	Distance Between Ellipses (usft)	Separation Factor	Warning
S32-T2N-R68W						
Ray Nelson 12-32 - CPR WELL - GYRO						Out of range
Ray Nelson 13-32 - CPR WELL - SURVEYS						Out of range
Ray Nelson 14-32 - CPR WELL - SURVEYS						Out of range
Ray Nelson 23-32 - CPR WELL - GYRO						Out of range
Ray Nelson 24-32 - CPR WELL - SURVEYS						Out of range
Ray Nelson 2-4-32 - CPR WELL - SURVEYS						Out of range
Ray Nelson 33-32 - CPR WELL - SURVEYS						Out of range
Ray Nelson 34-32 - CPR WELL - SURVEYS						Out of range
Ray Nelson 44-32 - CPR WELL - SURVEYS						Out of range
Ray Nelson 4-4-32 - CPR WELL - SURVEYS						Out of range
Ray Nelson 4-6-32 - CPR WELL - SURVEYS						Out of range
Ray Nelson 8-8-32 - CPR WELL - SURVEYS						Out of range
Regnier Farms 32-19 - CPR WELL - GYRO						Out of range
Regnier Farms 33-19 - CPR WELL - GYRO						Out of range
Regnier Farms 42-19 - CPR WELL - GYRO						Out of range
Regnier Farms 43-19 - CPR WELL - SURVEYS						Out of range
Regnier Farms B 2 - CPR WELL - GYRO						Out of range
Regnier Farms B Unit 1 - CPR WELL - GYRO						Out of range
Sawdey Unit 2 - KMG WELL - GYRO						Out of range
Schriner 11-5 - KMG WELL - GYRO						Out of range
Schriner 12-5 - KMG WELL - GYRO						Out of range
SEC Four 12-4 - KMG WELL - SURVEYS						Out of range
SEC Four 13-4 - KMG WELL - SURVEYS						Out of range
SEC Four 14-4 - KMG WELL - SURVEYS						Out of range
SEC Four 21-4 - KMG WELL - SURVEYS						Out of range
SEC Four 22-4 - KMG WELL - SURVEYS						Out of range
SEC Four 31-4 - KMG WELL - SURVEYS						Out of range
SEC Four 32-4 - KMG WELL - SURVEYS						Out of range
SEC Four 33-4 - KMG WELL - SURVEYS						Out of range
SEC Four 3-4 - KMG WELL - SURVEYS						Out of range
SEC Four 35-4 - KMG WELL - SURVEYS						Out of range
SEC Four 4-4 - KMG WELL - SURVEYS						Out of range
SEC Four 5-4 - KMG WELL - SURVEYS						Out of range
SEC Four 6-4 - KMG WELL - SURVEYS						Out of range
Shaw 11-29A - KMG WELL - SURVEYS						Out of range
Shaw 12-29A - KMG - GYRO						Out of range
Shaw 15-20 - KPK - SURVEYS						Out of range
Shaw 16-20 - KPK - SURVEYS						Out of range
Tallgrass 1-8 - KMG - SURVEYS						Out of range
Tallgrass 2-8 - KMG - SURVEYS						Out of range
Tallgrass 3-8 - KMG - SURVEYS						Out of range
Tallgrass 4-8 - KMG - SURVEYS						Out of range
Tallgrass 5-8 - KMG - SURVEYS						Out of range
Tallgrass 6-8 - KMG WELL - SURVEYS						Out of range
Williams 10-20 - KMG WELL - SURVEYS						Out of range
Williams 11-20 - KMG WELL - SURVEYS						Out of range
Williams 13-20 - KMG WELL - SURVEYS						Out of range
Williams 14-20 - KMG WELL - SURVEYS						Out of range
Williams 16-20 - KMG WELL - SURVEYS						Out of range
Williams 18-29 - KMG WELL - SURVEYS						Out of range
Williams 23-20 - KMG WELL - SURVEYS						Out of range

CC - Min centre to center distance or convergent point, SF - min separation factor, ES - min ellipse separation

# Cathedral Energy Services

## Anticollision Summary Report

<b>Company:</b>	Crestone Peak Resources	<b>Local Co-ordinate Reference:</b>	Well DREAM WEAVER North 3I-21H-N268 - Slot DREAM WEAVER North 3I-21H-N268 SHL
<b>Project:</b>	DJ BASIN	<b>TVD Reference:</b>	23' KB @ 4924.00usft (Original Well Elev)
<b>Reference Site:</b>	S21-T2N-R68W	<b>MD Reference:</b>	23' KB @ 4924.00usft (Original Well Elev)
<b>Site Error:</b>	0.00 usft	<b>North Reference:</b>	True
<b>Reference Well:</b>	DREAM WEAVER North 3I-21H-N268	<b>Survey Calculation Method:</b>	Minimum Curvature
<b>Well Error:</b>	0.00 usft	<b>Output errors are at</b>	2.00 sigma
<b>Reference Wellbore</b>	OH	<b>Database:</b>	USA EDM 5000 Multi Users DB
<b>Reference Design:</b>	PLAN #1	<b>Offset TVD Reference:</b>	Offset Datum

Summary						
Site Name	Reference Measured Depth (usft)	Offset Measured Depth (usft)	Distance Between Centres (usft)	Distance Between Ellipses (usft)	Separation Factor	Warning
Offset Well - Wellbore - Design						
S32-T2N-R68W						
Williams 24-20 - KMG WELL - SURVEYS						Out of range
Williams 24-20X - KMG WELL - SURVEYS						Out of range
Williams 25-20 - KMG WELL - SURVEYS						Out of range
Williams 35-20 - KMG WELL - SURVEYS						Out of range
Williams 36-20 - KMG WELL - SURVEYS						Out of range
Williams 39-20 - KMG WELL - SURVEYS						Out of range
Williams 4-29 - KMG WELL - SURVEYS						Out of range
Williams 7-20 - KMG WELL - SURVEYS						Out of range
Williams 8-20 - KMG WELL - SURVEYS						Out of range
Williams 9-20 - KMG WELL - SURVEYS						Out of range
Woolley 41-7 - CPR WELL - GYRO						Out of range
Woolley 42-7 KPK - KPK WELL - SURVEYS						Out of range

# Cathedral Energy Services

## Anticollision Summary Report

<b>Company:</b>	Crestone Peak Resources	<b>Local Co-ordinate Reference:</b>	Well DREAM WEAVER North 3I-21H-N268 - Slot DREAM WEAVER North 3I-21H-N268 SHL
<b>Project:</b>	DJ BASIN	<b>TVD Reference:</b>	23' KB @ 4924.00usft (Original Well Elev)
<b>Reference Site:</b>	S21-T2N-R68W	<b>MD Reference:</b>	23' KB @ 4924.00usft (Original Well Elev)
<b>Site Error:</b>	0.00 usft	<b>North Reference:</b>	True
<b>Reference Well:</b>	DREAM WEAVER North 3I-21H-N268	<b>Survey Calculation Method:</b>	Minimum Curvature
<b>Well Error:</b>	0.00 usft	<b>Output errors are at</b>	2.00 sigma
<b>Reference Wellbore</b>	OH	<b>Database:</b>	USA EDM 5000 Multi Users DB
<b>Reference Design:</b>	PLAN #1	<b>Offset TVD Reference:</b>	Offset Datum

Summary						
Site Name	Reference Measured Depth (usft)	Offset Measured Depth (usft)	Distance Between Centres (usft)	Distance Between Ellipses (usft)	Separation Factor	Warning
<b>Offset Well - Wellbore - Design</b>						
S7-T1N-R68W (Woolley-S/B/Morgan Hills)						
BAILEY 8-8-1 (EXISTING) - CPR WELL - SURVEYS						Out of range
BEARDEN 0-6-6 (EXISTING) - CPR WELL - SURVEYS						Out of range
BEARDEN 1 (EXISTING) - CPR WELL - GYRO						Out of range
BEARDEN 13-6 (EXISTING) - CPR WELL - SURVEYS						Out of range
BEARDEN 14-6 (EXISTING) - CPR WELL - SURVEYS						Out of range
BEARDEN 23-6 (EXISTING) - ENCANA WELL - GYRO						Out of range
BEARDEN 24-6 (EXISTING) - CPR WELL - CPR WELL						Out of range
BEARDEN 2-4-6 (EXISTING) - CPR WELL - SURVEYS						Out of range
BEARDEN 2-8-6 (EXISTING) - CPR WELL - SURVEYS						Out of range
BECKY 1 (EXISTING) - FOUNDATION WELL - NO SUR						Out of range
BECKY 2-6 (EXISTING) - EXTRACTION WELL - GYRO						Out of range
BECKY 5-6 (EXISTING) - FOUNDATION WELL - NO SU						Out of range
BECKY 7-6 (EXISTING) - EXTRACTION WELL - GYRO						Out of range
BILLINGS 21-7 (EXISTING) - KPK WELL - SURVEYS						Out of range
BULTHAUP 10-6 (EXISTING) - KMG WELL - SURVEYS						Out of range
BULTHAUP 15-6 (EXISTING) - KMG WELL - GYRO						Out of range
BULTHAUP 17-6 (EXISTING) - KMG WELL - SURVEYS						Out of range
BULTHAUP 21-6 (EXISTING) - KMG WELL - SURVEYS						Out of range
BULTHAUP 23-6 (EXISTING) - KMG WELL - SURVEYS						Out of range
BULTHAUP 27-6 (EXISTING) - KMG WELL - SURVEYS						Out of range
CANYON CREEK 43-13 (EXISTING) - CPR WELL - SUR						Out of range
CANYON CREEK 8-6-13X (EXISTING) - CPR WELL - S						Out of range
CHAMPLIN-86-AMOCO 1 (EXISTING) - AMOCO - SURV						Out of range
COAL CREEK 6-0-19 (EXISTING) - CPR WELL - STK						Out of range
COAL CREEK 6-0-19 (EXISTING) - OH - SURVEYS						Out of range
COMMONS 28-19 (EXISTING) - KMG WELL - SURVEYS						Out of range
ERIE CHAMPLIN 18-9 (EXISTING) - EXISTING - SURVE						Out of range
ERIE CHAMPLIN B UNIT 1 - CPR WELL - GYRO						Out of range
ERIE CHAMPLIN B UNIT 2 - CPR WELL - GYRO						Out of range
I & J 7-6 (EXISTING) - KMG WELL - GYRO						Out of range
Morgan Hills 1A-7H-A168 - HZ - FINAL						Out of range
Morgan Hills 1B-7H-A168 - HZ - FINAL						Out of range
Morgan Hills 1C-7H-A168 - HZ - FINAL						Out of range
Morgan Hills 1D-7H-A168 - HZ - FINAL						Out of range
Morgan Hills 1E-7H-A168 - HZ - FINAL						Out of range
Morgan Hills 1F-7H-A168 - HZ - FINAL						Out of range
Morgan Hills 1G-7H-A168 - HZ - FINAL						Out of range
Morgan Hills 1H-7H-A168 - HZ - FINAL						Out of range
Morgan Hills 1I-7H-A168 - OH - FINAL						Out of range
SOSA 11-18 (EXISTING) - CPR WELL - SURVEYS						Out of range
SOSA 12-18 (EXISTING) - CPR WELL - SURVEYS						Out of range
SOSA 21-18 (EXISTING) - CPR WELL - SURVEYS						Out of range
SOSA 22-18 (EXISTING) - CPR WELL - SURVEYS						Out of range
SOSA A UNIT 1 (EXISTING) - CPR WELL - GYRO						Out of range
TALLGRASS 33-17 (EXISTING) - KMG WELL - SURVEY						Out of range
THOMAS 14-7(EXISTING) - CPR WELL - SURVEYS						Out of range
THOMAS 24-7 (EXISTING) - CPR WELL - SURVEYS						Out of range
THOMAS 2-8-7 (EXISTING) - CPR WELL - SURVEYS						Out of range
THOMAS 33-7 (EXISTING) - CPR WELL - SURVEYS						Out of range
THOMAS 7-12 (EXISTING) - CPR WELL - GYRO						Out of range
Thomas 7-14 (AL) - Existing - NO SURVEYS						Out of range

CC - Min centre to center distance or convergent point, SF - min separation factor, ES - min ellipse separation



# Cathedral Energy Services

## Anticollision Summary Report

<b>Company:</b>	Crestone Peak Resources	<b>Local Co-ordinate Reference:</b>	Well DREAM WEAVER North 3I-21H-N268 - Slot DREAM WEAVER North 3I-21H-N268 SHL
<b>Project:</b>	DJ BASIN	<b>TVD Reference:</b>	23' KB @ 4924.00usft (Original Well Elev)
<b>Reference Site:</b>	S21-T2N-R68W	<b>MD Reference:</b>	23' KB @ 4924.00usft (Original Well Elev)
<b>Site Error:</b>	0.00 usft	<b>North Reference:</b>	True
<b>Reference Well:</b>	DREAM WEAVER North 3I-21H-N268	<b>Survey Calculation Method:</b>	Minimum Curvature
<b>Well Error:</b>	0.00 usft	<b>Output errors are at</b>	2.00 sigma
<b>Reference Wellbore</b>	OH	<b>Database:</b>	USA EDM 5000 Multi Users DB
<b>Reference Design:</b>	PLAN #1	<b>Offset TVD Reference:</b>	Offset Datum

Summary						
Site Name	Reference Measured Depth (usft)	Offset Measured Depth (usft)	Distance Between Centres (usft)	Distance Between Ellipses (usft)	Separation Factor	Warning
Offset Well - Wellbore - Design						
S7-T1N-R68W (Woolley-S/B/Morgan Hills)						
THOMAS E UNIT 1 (EXISTING) - CPR WELL - GYRO						Out of range
THOMAS E UNIT 2 - VESSELS WELL - INC ONLY						Out of range
THOMAS K UNIT 1 (EXISTING) - EXISTING - NO SURV						Out of range
WHEELER G UNIT 1 - CPR - GYRO						Out of range
WIGGETT 13-1 - CPR - GYRO						Out of range
WIGGETT 8-2-13 (EXISTING) - CPR WELL - SURVEYS						Out of range
WOOLLEY 11-7 (EXISTING) - CPR WELL - SURVEYS						Out of range
WOOLLEY 12-7 (EXISTING) - CPR WELL - GYRO						Out of range
WOOLLEY 21-7 (EXISTING) - CPR WELL - GYRO						Out of range
WOOLLEY 22-7 (EXISTING) - CPR WELL - SURVEYS						Out of range
WOOLLEY 2-4-7 (EXISTING) - CPR WELL - SURVEYS						Out of range
WOOLLEY 4-0-7 (EXISTING) - CPR WELL - SURVEYS						Out of range
WOOLLEY 41-7 (EXISTING) - CPR WELL - GYRO						Out of range
WOOLLEY 42-7 (EXISTING) - CPR WELL - GYRO						Out of range
WOOLLEY 42-7 KPK (EXISTING) - KPK WELL - SURVE						Out of range
WOOLLEY A 1-7 (EXISTING) - CPR WELL - GYRO						Out of range
WOOLLEY F UNIT 1 (EXISTING) - CPR WELL - GYRO						Out of range
Woolley-Becky 2A-7H-E168 - Hz - FINAL						Out of range
Woolley-Becky 2B-7H-E168 - Hz - FINAL						Out of range
Woolley-Becky 2C-7H-E168 - Hz - FINAL						Out of range
Woolley-Becky 2D-7H-E168 - Hz - FINAL						Out of range
Woolley-Becky 2E-7H-E168 - Hz - FINAL						Out of range
Woolley-Becky 2F-7H-E168 - Hz - FINAL						Out of range
Woolley-Becky 2G-7H-E168 - Hz - FINAL						Out of range
Woolley-Becky 2H-7H-E168 - Hz - FINAL						Out of range
Woolley-Sosa 2A-7H-E168 - OH - FINAL						Out of range
Woolley-Sosa 2B-7H-E168 - HZ - FINAL						Out of range
Woolley-Sosa 2C-7H-E168 - HZ - FINAL						Out of range
Woolley-Sosa 2D-7H-E168 - HZ - FINAL						Out of range
Woolley-Sosa 2E-7H-E168 - HZ - FINAL						Out of range
Woolley-Sosa 2F-7H-E168 - HZ - FINAL						Out of range
Woolley-Sosa 2G-7H-E168 - HZ - FINAL						Out of range

# Cathedral Energy Services

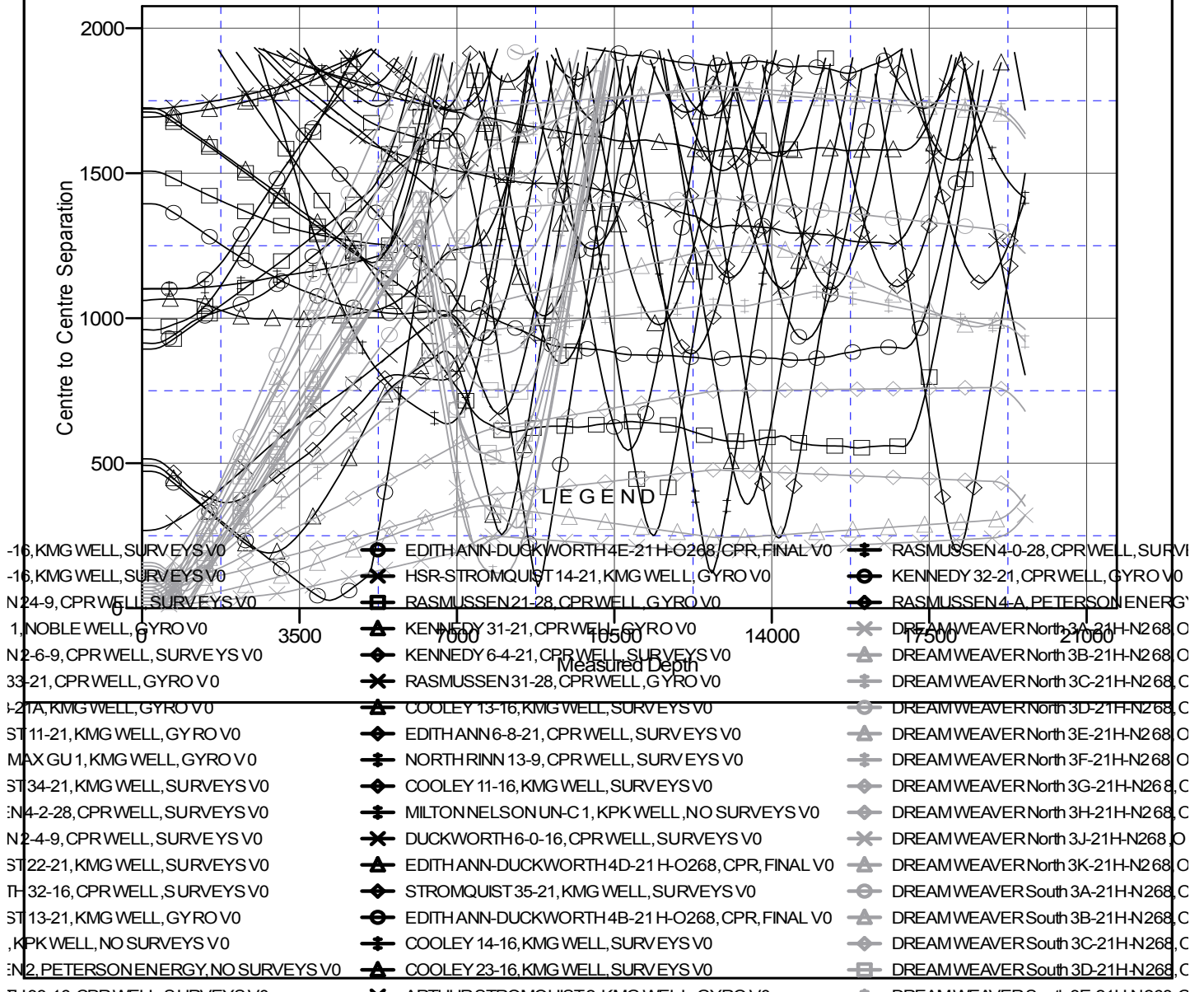
## Anticollision Summary Report

<b>Company:</b>	Crestone Peak Resources	<b>Local Co-ordinate Reference:</b>	Well DREAM WEAVER North 3I-21H-N268 - Slot DREAM WEAVER North 3I-21H-N268 SHL
<b>Project:</b>	DJ BASIN	<b>TVD Reference:</b>	23' KB @ 4924.00usft (Original Well Elev)
<b>Reference Site:</b>	S21-T2N-R68W	<b>MD Reference:</b>	23' KB @ 4924.00usft (Original Well Elev)
<b>Site Error:</b>	0.00 usft	<b>North Reference:</b>	True
<b>Reference Well:</b>	DREAM WEAVER North 3I-21H-N268	<b>Survey Calculation Method:</b>	Minimum Curvature
<b>Well Error:</b>	0.00 usft	<b>Output errors are at</b>	2.00 sigma
<b>Reference Wellbore</b>	OH	<b>Database:</b>	USA EDM 5000 Multi Users DB
<b>Reference Design:</b>	PLAN #1	<b>Offset TVD Reference:</b>	Offset Datum

Reference Depths are relative to 23' KB @ 4924.00usft ( Original Well E  
Offset Depths are relative to Offset Datum  
Central Meridian is -105.500000

Coordinates are relative to: DREAM WEAVER North 3I-21H-N268 - Slot DREAM  
Coordinate System is US State Plane 1983, Colorado Northern Zone  
Grid Convergence at Surface is: 0.32°

### Ladder Plot



CC - Min centre to center distance or convergent point, SF - min separation factor, ES - min ellipse separation

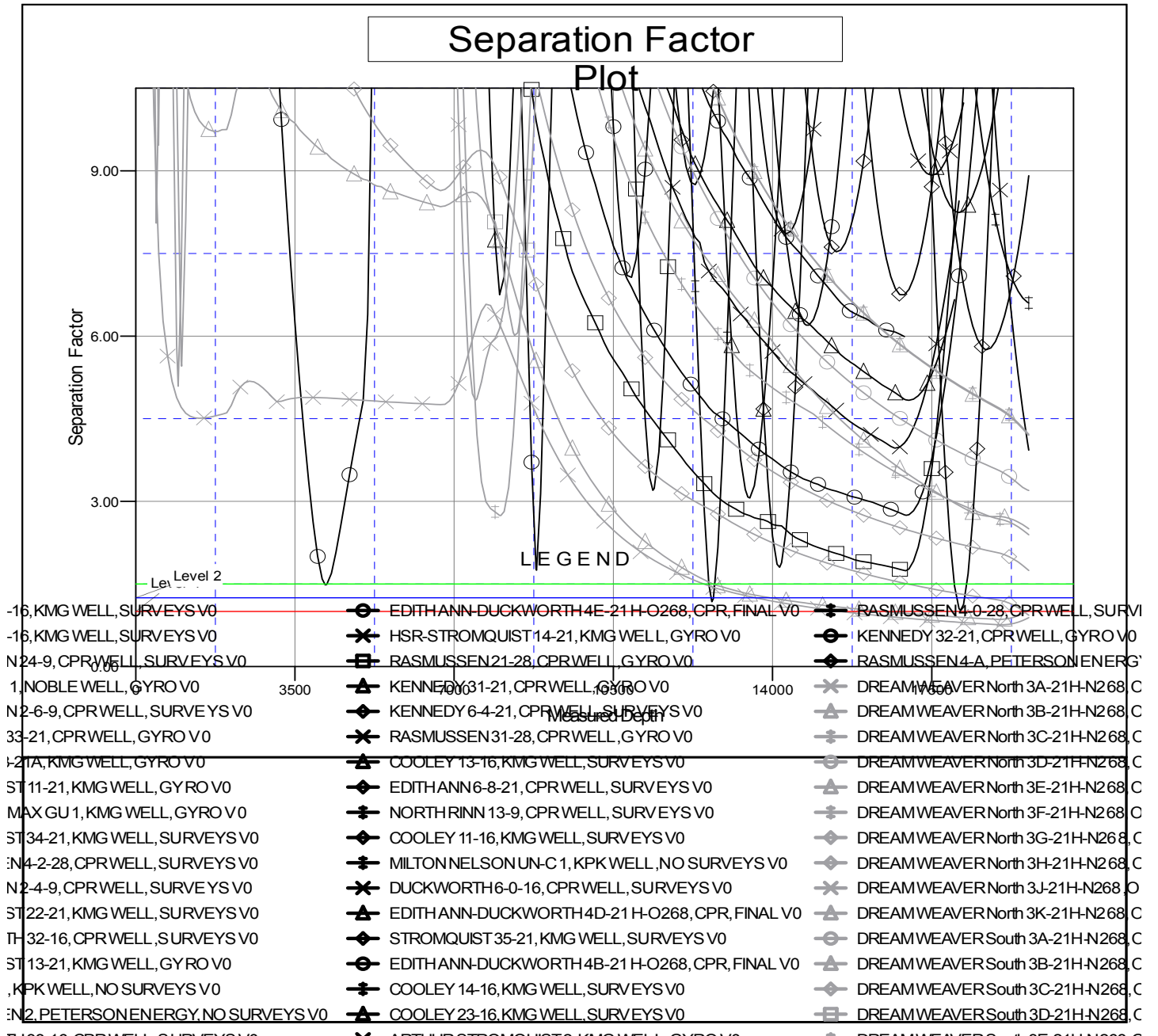
# Cathedral Energy Services

## Anticollision Summary Report

<b>Company:</b>	Crestone Peak Resources	<b>Local Co-ordinate Reference:</b>	Well DREAM WEAVER North 3I-21H-N268 - Slot DREAM WEAVER North 3I-21H-N268 SHL
<b>Project:</b>	DJ BASIN	<b>TVD Reference:</b>	23' KB @ 4924.00usft (Original Well Elev)
<b>Reference Site:</b>	S21-T2N-R68W	<b>MD Reference:</b>	23' KB @ 4924.00usft (Original Well Elev)
<b>Site Error:</b>	0.00 usft	<b>North Reference:</b>	True
<b>Reference Well:</b>	DREAM WEAVER North 3I-21H-N268	<b>Survey Calculation Method:</b>	Minimum Curvature
<b>Well Error:</b>	0.00 usft	<b>Output errors are at</b>	2.00 sigma
<b>Reference Wellbore</b>	OH	<b>Database:</b>	USA EDM 5000 Multi Users DB
<b>Reference Design:</b>	PLAN #1	<b>Offset TVD Reference:</b>	Offset Datum

Reference Depths are relative to 23' KB @ 4924.00usft (Original Well E  
Offset Depths are relative to Offset Datum  
Central Meridian is -105.500000

Coordinates are relative to: DREAM WEAVER North 3I-21H-N268 - Slot DREAM  
Coordinate System is US State Plane 1983, Colorado Northern Zone  
Grid Convergence at Surface is: 0.32°



CC - Min centre to center distance or convergent point, SF - min separation factor, ES - min ellipse separation