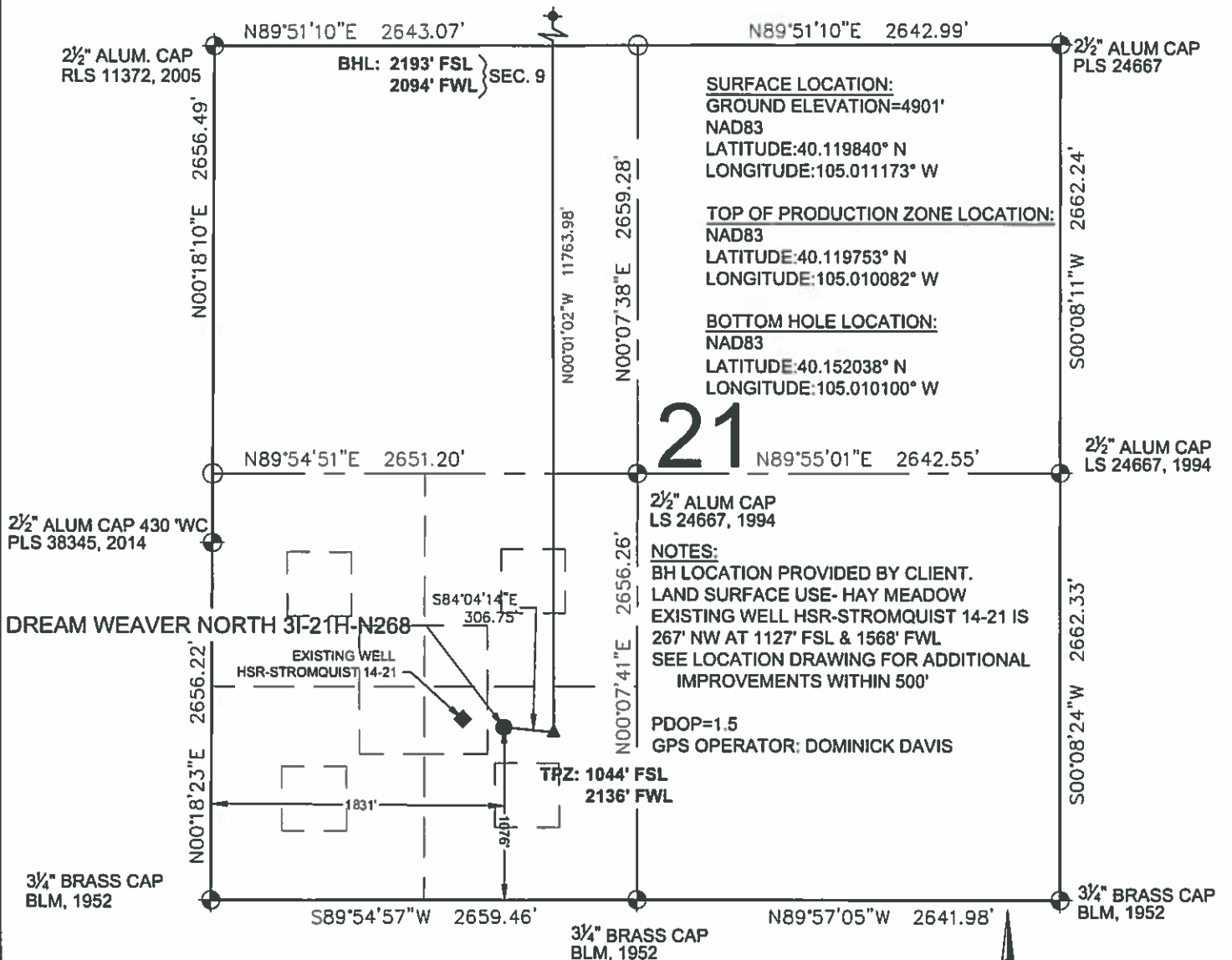


# DREAM WEAVER NORTH 31-21H-N268 WELL LOCATION EXHIBIT



## LEGEND

- ⊕ = EXISTING MONUMENT
- = CALCULATED POSITION
- = PROPOSED WELL
- ◆ = EXISTING WELL
- ⬮ = BOTTOM HOLE
- ▲ = TOP OF PRODUCTION ZONE
- TPZ = TOP OF PRODUCTION ZONE
- BHL = BOTTOM HOLE LOCATION
- WC = WITNESS CORNER

## NOTES:

- THIS FIELD SURVEY CONFORMS TO THE MINIMUM STANDARDS SET BY THE C.O.G.C.C., RULE NO. 215
- ALL DISTANCES AND BEARINGS SHOWN HEREON ARE GROUND VALUES AS GPS MEASURED IN THE FIELD, WITH TIES TO WELLS MEASURED PERPENDICULAR TO LINES SHOWN HEREON. THIS LOW DISTORTION PROJECTION (LDP) IS BASED ON THE NORTH AMERICAN DATUM OF 1983, U.S. SURVEY FOOT WITH A LATITUDE ORIGIN OF 40.131498°N, A CENTRAL MERIDIAN LONGITUDE OF 104.998741°W, AND A SCALE FACTOR ON THE CENTRAL MERIDIAN OF 1.000232 (EXACT). THE LDP BASIS OF BEARINGS IS GEODETIC NORTH.
- FIELD VERIFICATION OF MONUMENTS COMPLETED WITHIN 1 YEAR OF SIGNATURE DATE, UNLESS OTHERWISE NOTED.

## WELL DREAM WEAVER NORTH 31-21H-N268 TO BE LOCATED 1076' FSL & 1831' FWL

I, ROBERT J. GUFFEY, A LICENSED PROFESSIONAL LAND SURVEYOR IN THE STATE OF COLORADO, DO HEREBY STATE TO **CRESTONE PEAK RESOURCES** THAT THE WELL LOCATION EXHIBIT SHOWN HEREON WAS PREPARED BY ME OR UNDER MY DIRECT SUPERVISION AND THE DRAWING SHOWN HEREON ACCURATELY DEPICTS THE PROPOSED LOCATION OF THE WELL. THIS EXHIBIT MEETS THE REQUIREMENTS OF A GIS LAND POSITION AS DEFINED BY SECTION 38-51-102 (7.5) C.R.S. AND AS SUCH PER SECTION 38-51-109.3 C.R.S. CANNOT BE RELIED UPON TO DETERMINE OWNERSHIP.

ROBERT J. GUFFEY, PLS 20680  
COLORADO LICENSED PROFESSIONAL LAND SURVEYOR  
FOR AND ON BEHALF OF P.F.S., LLC  
d.b.a. ASCENT GEOMATICS SOLUTIONS

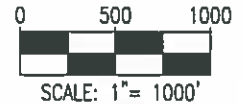
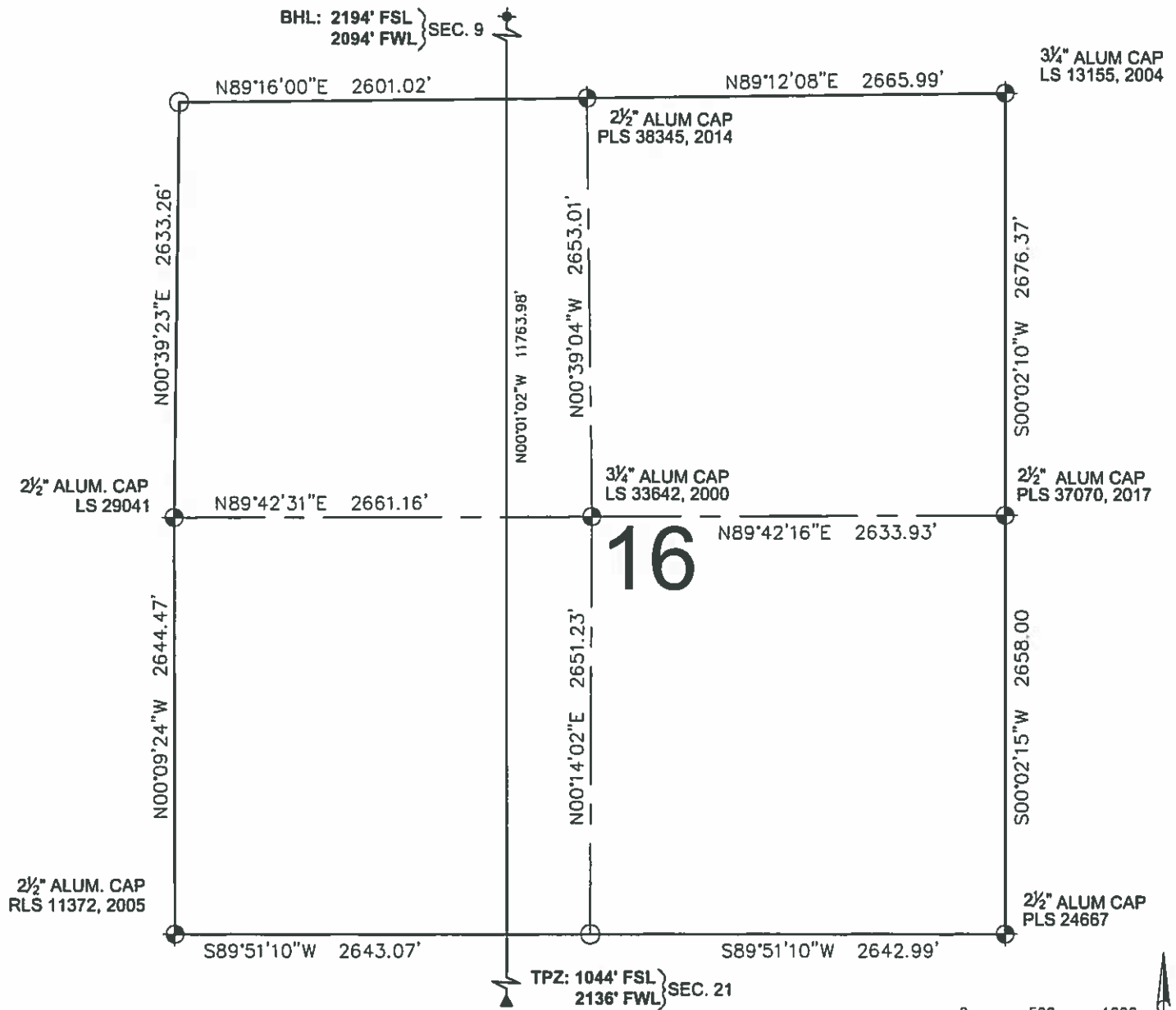


SHEET 1 OF 3

NOTICE: ACCORDING TO COLORADO LAW YOU MUST COMMENCE ANY LEGAL ACTION BASED UPON ANY DEFECT IN THIS SURVEY WITHIN THREE YEARS AFTER YOU FIRST DISCOVER SUCH DEFECT. IN NO EVENT MAY ANY ACTION BASED UPON ANY DEFECT IN THIS SURVEY BE COMMENCED MORE THAN TEN YEARS FROM THIS SAID DATE OF THIS CERTIFICATION SHOWN HEREON.

<p><b>ASCENT</b> GEOMATICS SOLUTIONS</p>	FIELD DATE 02-13-18	WELL NAME DREAM WEAVER NORTH 31-21H-N268	PREPARED FOR
	DRAWING DATE 04-12-18	SURFACE LOCATION SE 1/4 SW 1/4 SEC. 21, T2N, R68W, 6TH P.M. WELD COUNTY, COLORADO	<p><b>CRESTONE PEAK</b> RESOURCES</p>
	BY RMC	CHECKED CLP	

# DREAM WEAVER NORTH 31-21H-N268 WELL LOCATION EXHIBIT



## LEGEND

- |                         |                              |  |
|-------------------------|------------------------------|--|
| ⊕ = EXISTING MONUMENT   | ⚡ = BOTTOM HOLE              |  |
| ○ = CALCULATED POSITION | ▲ = TOP OF PRODUCTION ZONE   |  |
| ● = PROPOSED WELL       | TPZ = TOP OF PRODUCTION ZONE | ROBERT J. GUFFEY, PLS 20680                  |
| ◆ = EXISTING WELL       | BHL = BOTTOM HOLE LOCATION   | COLORADO LICENSED PROFESSIONAL LAND SURVEYOR |
|                         | WC = WITNESS CORNER          | FOR AND ON BEHALF OF P.F.S., LLC             |
|                         |                              | d.b.a. ASCENT GEOMATICS SOLUTIONS            |



SHEET 2 OF 3



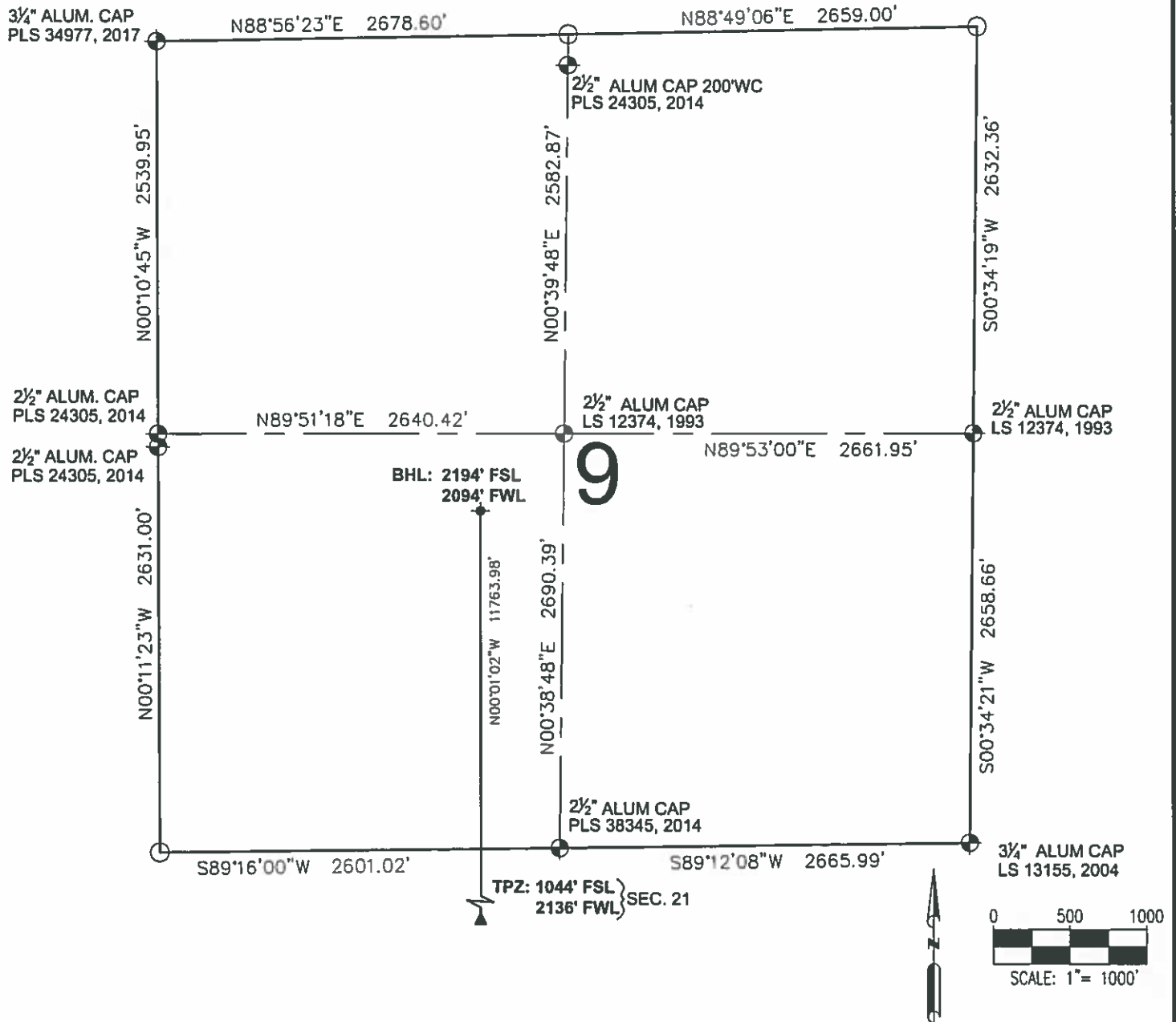
FIELD DATE  
02-13-18  
DRAWING DATE:  
04-12-18  
BY  
RMC  
CHECKED:  
CLP

WELL NAME  
DREAM WEAVER NORTH 31-21H-N268  
SURFACE LOCATION  
SE 1/4 SW 1/4 SEC. 21, T2N, R68W, 6TH P.M.  
WELD COUNTY, COLORADO

PREPARED FOR:



# DREAM WEAVER NORTH 31-21H-N268 WELL LOCATION EXHIBIT



## LEGEND

- |                         |                              |   |
|-------------------------|------------------------------|---|
| ⊕ = EXISTING MONUMENT   | ⬆ = BOTTOM HOLE              | <b>ROBERT J. GUFFEY, PLS 20680</b><br>COLORADO LICENSED PROFESSIONAL LAND SURVEYOR<br>FOR AND ON BEHALF OF P.F.S., LLC<br>d.b.a. ASCENT GEOMATICS SOLUTIONS |
| ○ = CALCULATED POSITION | ▲ = TOP OF PRODUCTION ZONE   |   |
| ● = PROPOSED WELL       | TPZ = TOP OF PRODUCTION ZONE |   |
| ◆ = EXISTING WELL       | BHL = BOTTOM HOLE LOCATION   |   |
|                         | WC = WITNESS CORNER          |   |



SHEET 3 OF 3

 <b>ASCENT</b> <small>GEOMATICS SOLUTIONS</small>	FIELD DATE: <b>02-13-18</b>	WELL NAME: <b>DREAM WEAVER NORTH 31-21H-N268</b>	PREPARED FOR:  <b>CRESTONE PEAK</b> <small>RESOURCES</small>
	DRAWING DATE: <b>04-12-18</b>	SURFACE LOCATION: <b>SE 1/4 SW 1/4 SEC. 21, T2N, R68W, 6TH P.M.</b> <b>WELD COUNTY, COLORADO</b>	
BY: <b>RMC</b>		CHECKED: <b>CLP</b>	