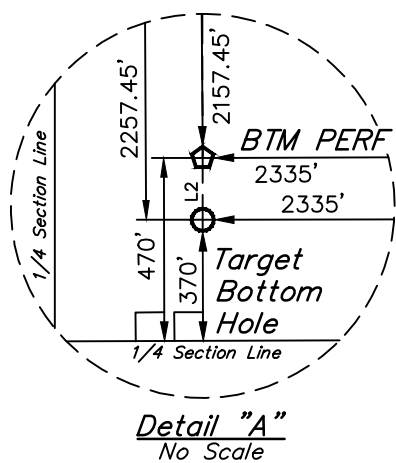


LEGEND:

- └ = 90° SYMBOL
● = PROPOSED WELLHEAD.
◇ = ENTRY POINT.
○ = BTM PERF.
○ = TARGET BOTTOM HOLE.
▲ = SECTION CORNERS LOCATED. (NAD 83)
△ = SECTION CORNERS RE-ESTABLISHED.
(Not Set on Ground.) (NAD 83)

T1S, R67W, 6th P.M.

| LINE TABLE | | |
|------------|-------------|---------|
| LINE | DIRECTION | LENGTH |
| L1 | S62°40'40"W | 540.05' |
| L2 | S00°06'25"W | 100.00' |



PDOP = 1.6



| NAD 83 (SURFACE LOCATION) | NAD 83 (ENTRY POINT) | NAD 83 (BTM PERF) | NAD 83 (TARGET BOTTOM HOLE) |
|--|--|--|--|
| LATITUDE = 39°57'25.27" (39.957019) | LATITUDE = 39°57'22.83" (39.956342) | LATITUDE = 39°55'21.73" (39.922703) | LATITUDE = 39°55'20.74" (39.922428) |
| LONGITUDE = 104°53'27.63" (104.891007) | LONGITUDE = 104°53'33.79" (104.892719) | LONGITUDE = 104°53'33.35" (104.892597) | LONGITUDE = 104°53'33.35" (104.892597) |
| NAD 27 (SURFACE LOCATION) | NAD 27 (ENTRY POINT) | NAD 27 (BTM PERF) | NAD 27 (TARGET BOTTOM HOLE) |
| LATITUDE = 39°57'25.32" (39.957034) | LATITUDE = 39°57'22.88" (39.956356) | LATITUDE = 39°55'21.78" (39.922717) | LATITUDE = 39°55'20.80" (39.922444) |
| LONGITUDE = 104°53'25.71" (104.890476) | LONGITUDE = 104°53'31.88" (104.892189) | LONGITUDE = 104°53'31.43" (104.892064) | LONGITUDE = 104°53'31.44" (104.892067) |

BASIS OF BEARINGS
BASIS OF BEARINGS IS A G.P.S. OBSERVATION

BASIS OF ELEVATION
BENCHMARK JR 53 5026 LOCATED IN THE SW 1/4 SE 1/4 OF SECTION 18, T1N, R68W, 6th P.M., TAKEN FROM 1988 PUBLISHED DATUM BY THE UNITED STATES DEPARTMENT OF THE INTERIOR, GEOLOGICAL SURVEY AS BEING 5028 FEET.



UWELLS, LLC
Corporate Office * 85 South 200 East
Vernal, UT 84078 * (435) 789-1017



CERTIFICATE OF RECORD REGISTRATION
THIS IS TO CERTIFY THAT THE ABOVE SURVEY WAS PREPARED BY THE SURVEYOR
NOTES OF ACTUAL SURVEYS MADE BY ME OR UNDER MY SUPERVISION
AND THAT THE SAME ARE TRUE AND CORRECT TO THE BEST OF MY
KNOWLEDGE AND BELIEF.



REGISTERED LAND SURVEYOR
REGISTRATION NO. 28285
STATE OF COLORADO

REV: 5 07-10-18 T.L.L. (SHL CHANGE)

GREAT WESTERN OPERATING COMPANY

KORTUM LD 33-169HN
NW 1/4 NE 1/4, SECTION 21, T1S, R67W, 6th P.M.
ADAMS COUNTY, COLORADO

| | |
|--------------------------------------|----------------------|
| SURVEYED BY: JARED CHRISTOPHER, G.W. | DATE: 11-21-16 |
| DRAWN BY: J.W. | DATE DRAWN: 06-12-14 |
| SCALE: 1" = 1000' | |

WELL LOCATION PLAT